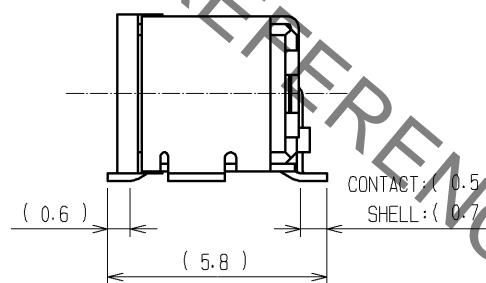
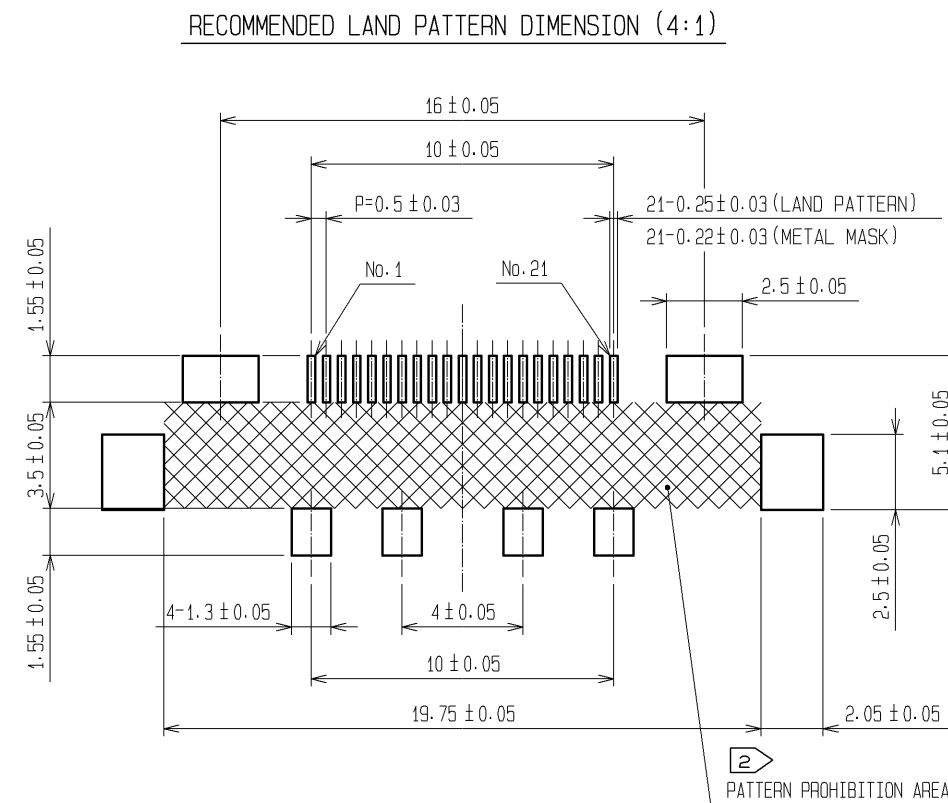
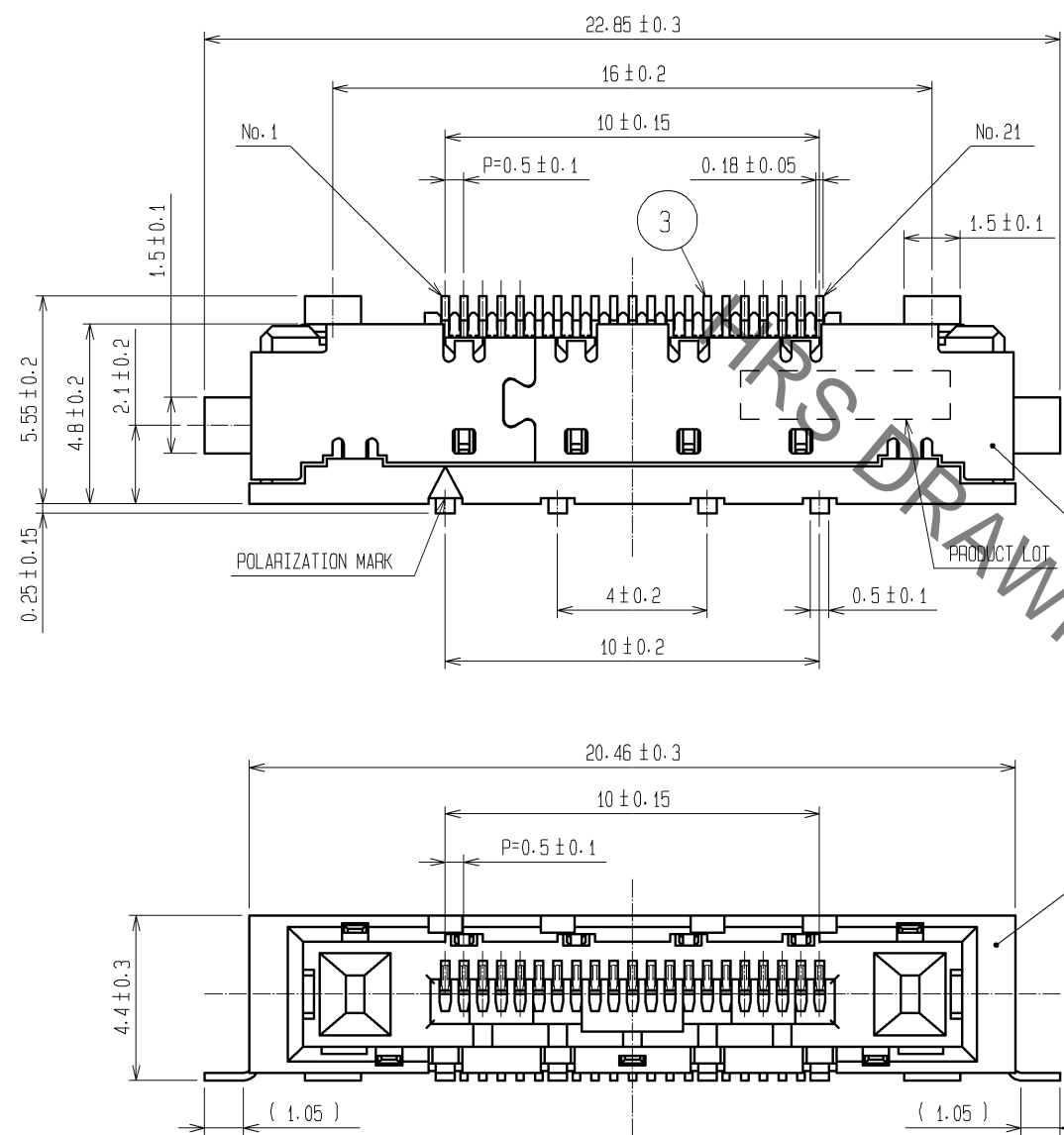


May.1.2023 Copyright 2023 HIROSE ELECTRIC CO., LTD. All Rights Reserved.
In case of consideration for using Automotive equipment / device which demand high reliability, kindly contact our sales window correspondents.



- NOTE 1 LEAD CO-PLANARITY OF THIS PRODUCT TO BE 0.1MAX.
 2 AREA OF INNER SMT LAND REQUIRES PATTERN PROHIBITION OR RESIST TREATMENT TO PREVENT THE PATTERN TOUCHING TO THE CONTACTS.
 3 () INDICATES A REFERENCE DIMENSION.
 4 MANUFACTURING PROCESS COULD LEAVE SCRATCH AND/OR PUNCH MARKS HAVING NO AFFECT ON THE PRODUCT PERFORMANCE.
 5 PACKAGING FOR THIS PRODUCT APPLIES EMBOSSED CARRIER TAPE PACKAGING. SEE SHEET 2/2 FOR DETAILS.

NO.	MATERIAL	FINISH . REMARKS	NO.	MATERIAL	FINISH . REMARKS
2	PHOSPHOR BRONZE	OVER PLATING:TIN PLATING 1#m min UNDER PLATING:NICKEL 0.2#m min	3	PHOSPHOR BRONZE	CONTACT AREA:GOLD 0.1#m min LEAD AREA:GOLD 0.03#m min UNDER PLATING:NICKEL 1#m min
1	LCP	BLACK, UL94V-0	4	PS	(EMBOSSD CARRIER TAPE)
			5	PE	(COVER TAPE)

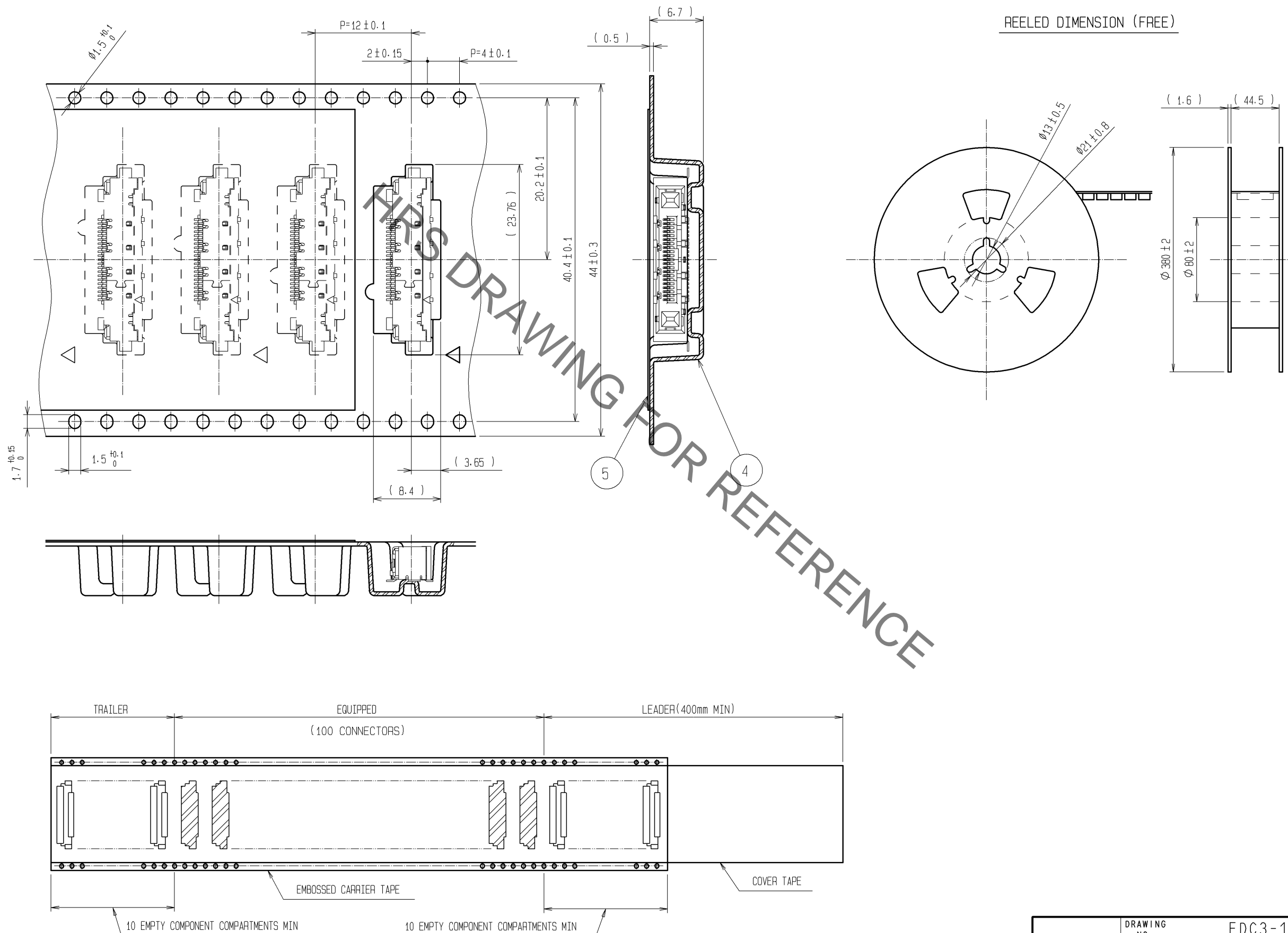
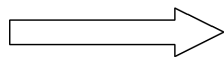
UNITS	SCALE	COUNT	DESCRIPTION OF REVISIONS	DESIGNED	CHECKED	DATE
mm	5 : 1	△	APPROVED : HS. OKAWA 11.09.15 CHECED : HT. YAMAGUCHI 11.09.15 DESIGNED : TS. MIYAKI 11.09.15 DRAWN : TS. MIYAKI 11.09.15			

DRAWING NO.	PART NO.	CODE NO.
EDC3-157339-02	FX16-21S-0.5SH(30)	CL575-3411-5-30

May.1.2023 Copyright 2023 HIROSE ELECTRIC CO., LTD. All Rights Reserved.
 In case of consideration for using Automotive equipment / device which demand high reliability, kindly contact our sales window correspondents.

DRAWING FOR PACKING(2:1)

THE DIRECTION OF PULLING OUT



HRS	DRAWING NO.	EDC3-157339-02
	PART NO.	FX16-21S-0.5SH(30)
	CODE NO.	CL575-3411-5-30
		\triangle 2/2