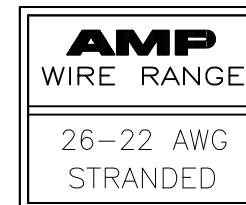
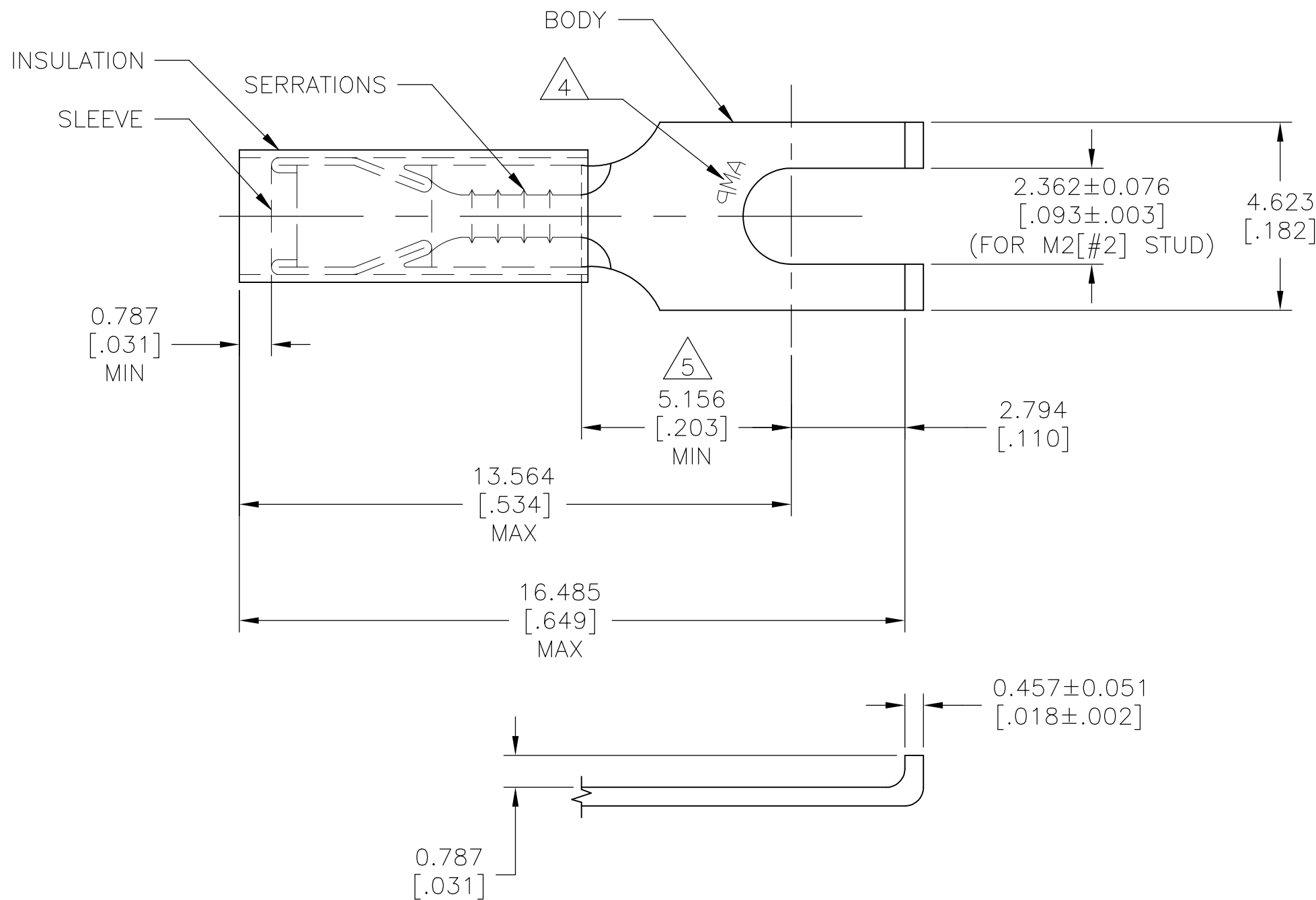


| P | LTR | DESCRIPTION | DATE | DWN | APVD |
|---|-----|---------------------------|-----------|-----|------|
| | M1 | REVISED PER ECO-17-008114 | 12JUN2018 | RS | DR |



- 1 WIRE INSULATION DIA:
1.270 TO 2.083 [.050 TO .082]
- 2 FINISH:
BODY & SLEEVE: TIN PLATE PER ASTM B545
0.0025400 [.000100]
INSULATION: COLOR - YELLOW
- 3 MATERIAL:
BODY & SLEEVE: COPPER PER ASTM B152
INSULATION: NYLON
- 4 STAMP AMP APPROX AS SHOWN
- 5 APPLIES FROM EDGE OF METAL WIRE
BARREL TO CENTER OF STUD

| | | |
|----------|-------------|---------|
| 1000 | LOOSE PIECE | 324597 |
| QUANTITY | DESCRIPTION | PART NO |

AMP INCORPORATED
CUSTOMER SERVICE SYSTEMS

THIS DRAWING IS A CONTROLLED DOCUMENT.

DWN RAVI S 12JUN2018

CHK ROHDE DANIEL 12JUN2018

APVD ROHDE DANIEL 12JUN2018



FOR ADDITIONAL
PRODUCT INFORMATION OR
COPIES OF DRAWINGS
AND TECHNICAL DOCUMENTS

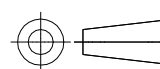
PRODUCT INFORMATION CENTER
1-800-522-6752

MAX RECOMMENDED OPERATING
TEMPERATURE:
105°C [221°F]

VOLTAGE RATING:
300 V MAX

WIRE CROSS SECTIONAL AREA RANGE,
0.10-0.41mm²[202-810] CIR MILS
STRANDED

DIMENSIONS:
mm [INCHES]



TOLERANCES UNLESS
OTHERWISE SPECIFIED:

| | |
|--------|----------------|
| 0 PLC | ± - |
| 1 PLC | ± - |
| 2 PLC | ± - |
| 3 PLC | ± 0.127 [.005] |
| 4 PLC | ± - |
| ANGLES | ± - |

MATERIAL
3

FINISH
2

NAME
TERMINAL,
P.I.D.G., FLANGED SPADE
WIRE SIZE: 26-22

FOR APPLICATION
TOOLING INFORMATION

TOOLING ASSISTANCE CENTER
1-800-722-1111

FOR ORDER ENTRY
1-800-526-5142

APPLICATION SPEC
114-2157

WEIGHT

| | | | |
|------|-----------|------------|---------------|
| SIZE | CAGE CODE | DRAWING NO | RESTRICTED TO |
| A3 | 00779 | C-324597 | - |

CUSTOMER DRAWING SCALE N.T.S. SHEET 1 OF 1 REV M1