



Insulated cross-connector, No. of poles: 2, Mounting type: Plug in, Width: 14.3 mm, Rated cross-section: 6 mm<sup>2</sup>, Colour: Yellow

**RAL:** 1026

### Business data

|  |                           |
|--|---------------------------|
| Article number                             | 17221.8                   |
| Article name                               | SQI 6/2 YE                |
| GTIN (EAN)                                 | 4044211148744             |
| Packaging unit                             | 50                        |
| Quantity unit                              | PC                        |
| Weight per piece (not including packaging) | 2.2 g                     |
| Weight per piece (including packaging)     | 2.24 g                    |
| Unit of weight                             | G                         |
| Customs number                             | 85389099                  |
| Country of origin                          | DE                        |
| Prio-Article                               | 17221.8                   |
| Product description                        | Insulated cross-connector |

### Technical data

#### Dimensions

|            |         |
|------------|---------|
| Length     | 4 mm    |
| Width      | 14.3 mm |
| Height     | 23 mm   |
| Pitch size | 8 mm    |

#### Ratings

|                                 |                   |
|---------------------------------|-------------------|
| Voltage with partition, max.    | 1000 V            |
| Voltage without partition, max. | 1000 V            |
| Rated current                   | 41 A              |
| Current load, max.              | 41 A              |
| Rated cross-section             | 6 mm <sup>2</sup> |
| Contamination degree            | 2                 |

#### Connection data

|              |   |
|--------------|---|
| No. of poles | 2 |
|--------------|---|

#### Materials

|                           |               |
|---------------------------|---------------|
| Material                  | Copper alloy  |
| Insulation housing        | Polyamide 6.6 |
| Flammability class UL 94  | V-2           |
| Working temperature, min. | -40 °C        |
| Working temperature, max. | 105 °C        |

#### Further technical data

|                               |         |
|-------------------------------|---------|
| Mounting type                 | Plug in |
| Insulation available          | ✓       |
| Touch protection is available | ✓       |
| Number of bridged terminals   | 2       |

#### Environmental Product Compliance

|                                |     |
|--------------------------------|-----|
| REACH Conform                  | yes |
| REACH Candidate Substance Note | No  |
| RoHS Conform                   | yes |

# Data sheet

17221.8 SQI 6/2 YE



---

## Media

---

### Accessories

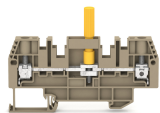
#### Insulation cap for cross-connector



Insulating cap, Colour: Yellow

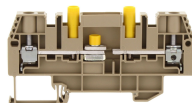
| Article number | Article name   | GTIN (EAN)    | Packaging unit |
|----------------|----------------|---------------|----------------|
| <u>17200.8</u> | SQIK 2,5-10 YE | 4044211148539 | 20             |

#### ##INVERSE##CONTA-CONNECT



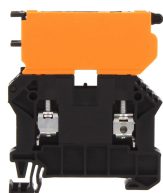
Test disconnect terminal, Screw connection, Mounting type: Mounting rail TS 35/7.5, Rated cross-section: 6 mm<sup>2</sup>, Width: 8.1 mm, Colour: Beige

| Article number | Article name    | GTIN (EAN)    | Packaging unit |
|----------------|-----------------|---------------|----------------|
| <u>17523.2</u> | SPTK 6/LT/HB BG | 4044211209223 | 50 ST          |



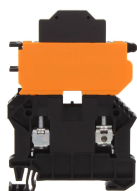
Test disconnect terminal, Screw connection, Mounting type: Mounting rail TS 35/7.5, Rated cross-section: 6 mm<sup>2</sup>, Width: 8.1 mm, Colour: Beige

| Article number | Article name         | GTIN (EAN)    | Packaging unit |
|----------------|----------------------|---------------|----------------|
| <u>17524.2</u> | SPTK 6/LT/STBI/YE BG | 4044211209919 | 50 ST          |



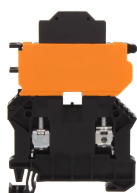
Fuse-disconnect terminal, Screw connection, Mounting type: Mounting rail TS 35/7.5, Rated cross-section: 6 mm<sup>2</sup>, Width: 8.1 mm, Colour: Black

| Article number | Article name | GTIN (EAN)    | Packaging unit |
|----------------|--------------|---------------|----------------|
| <u>17151.4</u> | SSIK 6/2A BK | 4044211188993 | 50 ST          |



Fuse-disconnect terminal, Screw connection, Mounting type: Mounting rail TS 35/7.5, Rated cross-section: 6 mm<sup>2</sup>, Width: 8.1 mm, Colour: Black

| Article number | Article name                  | GTIN (EAN)    | Packaging unit |
|----------------|-------------------------------|---------------|----------------|
| <u>17176.4</u> | SSIK 6/2A/LED 30-60V AC/DC BK | 4044211188931 | 50 ST          |



Fuse-disconnect terminal, Screw connection, Mounting type: Mounting rail TS 35/7.5, Rated cross-section: 6 mm<sup>2</sup>, Width: 8.1 mm, Colour: Black

| Article number | Article name                | GTIN (EAN)    | Packaging unit |
|----------------|-----------------------------|---------------|----------------|
| <u>17178.4</u> | SSIK 6/2A/LED 500V AC/DC BK | 4044211188948 | 50 ST          |

### ##INVERSE##CONTA-CONNECT



Test disconnect terminal, Screw connection, Mounting type: Mounting rail TS 35/7.5, Rated cross-section: 6 mm<sup>2</sup>, Width: 8.1 mm, Colour: Beige

| Article number | Article name | GTIN (EAN)    | Packaging unit |
|----------------|--------------|---------------|----------------|
| <u>17520.2</u> | SPTK 6/DU BG | 4044211209650 | 50 ST          |



Test disconnect terminal, Screw connection, Mounting type: Mounting rail TS 35/7.5, Rated cross-section: 6 mm<sup>2</sup>, Width: 8.1 mm, Colour: Beige

| Article number | Article name | GTIN (EAN)    | Packaging unit |
|----------------|--------------|---------------|----------------|
| <u>17521.2</u> | SPTK 6/LT BG | 4044211209162 | 50 ST          |



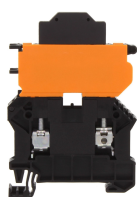
Test disconnect terminal, Screw connection, Mounting type: Mounting rail TS 35/7.5, Rated cross-section: 6 mm<sup>2</sup>, Width: 8.1 mm, Colour: Beige

| Article number | Article name | GTIN (EAN)    | Packaging unit |
|----------------|--------------|---------------|----------------|
| <u>17522.2</u> | SPTK 6/QT BG | 4044211209216 | 50 ST          |



Test disconnect terminal, Screw connection, Mounting type: Mounting rail TS 35/7.5, Rated cross-section: 6 mm<sup>2</sup>, Width: 8.1 mm, Colour: Beige

| Article number | Article name         | GTIN (EAN)    | Packaging unit |
|----------------|----------------------|---------------|----------------|
| <u>17525.2</u> | SPTK 6/LT/STBI/BU BG | 4044211209926 | 50 ST          |



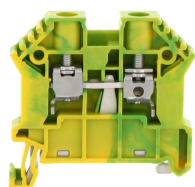
Fuse-disconnect terminal, Screw connection, Mounting type: Mounting rail TS 35/7.5, Rated cross-section: 6 mm<sup>2</sup>, Width: 8.1 mm, Colour: Black

| Article number | Article name                  | GTIN (EAN)    | Packaging unit |
|----------------|-------------------------------|---------------|----------------|
| <u>17175.4</u> | SSIK 6/2A/LED 12-30V AC/DC BK | 4044211188924 | 50 ST          |



Fuse-disconnect terminal, Screw connection, Mounting type: Mounting rail TS 35/7.5, Rated cross-section: 6 mm<sup>2</sup>, Width: 8.1 mm, Colour: Black

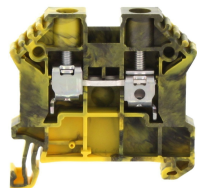
| Article number | Article name                    | GTIN (EAN)    | Packaging unit |
|----------------|---------------------------------|---------------|----------------|
| <u>17177.4</u> | SSIK 6/2A/LED 110-250V AC/DC BK | 4044211188955 | 50 ST          |



Protective earth terminal, Screw connection, Mounting type: Mounting rail TS 35/7.5, Rated cross-section: 10 mm<sup>2</sup>, Width: 8 mm, Colour: Green-yellow

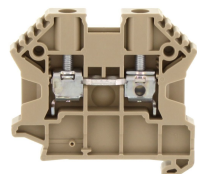
| Article number | Article name  | GTIN (EAN)    | Packaging unit |
|----------------|---------------|---------------|----------------|
| <u>17111.2</u> | SSL 6/2A GNYE | 4044211141769 | 100 ST         |

### ##INVERSE##CONTA-CONNECT



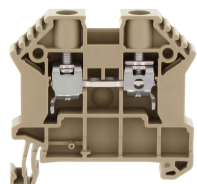
Feed-through terminal, Screw connection, Mounting type: Mounting rail TS 35/7.5, Rated cross-section: 10 mm<sup>2</sup>, Width: 8 mm, Colour: Black-yellow

| Article number | Article name     | GTIN (EAN)    | Packaging unit |
|----------------|------------------|---------------|----------------|
| <u>17132.2</u> | SRK 6/2A/PE BKYE | 4044211200718 | 100 ST         |



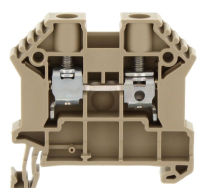
Feed-through terminal, Screw connection, Mounting type: Mounting rail TS 35/7.5, Rated cross-section: 10 mm<sup>2</sup>, Width: 8 mm, Colour: Beige

| Article number | Article name  | GTIN (EAN)    | Packaging unit |
|----------------|---------------|---------------|----------------|
| <u>17109.2</u> | SRK B 6/2A BG | 4044211141745 | 100 ST         |



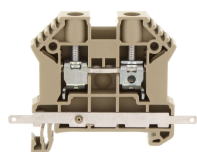
Feed-through terminal, Screw connection, Mounting type: Mounting rail TS 35/7.5, Rated cross-section: 10 mm<sup>2</sup>, Width: 8 mm, Colour: Beige

| Article number | Article name | GTIN (EAN)    | Packaging unit |
|----------------|--------------|---------------|----------------|
| <u>17108.2</u> | SRK 6/2A BG  | 4044211141738 | 100            |



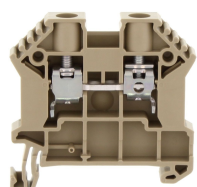
Feed-through terminal, Screw connection, Mounting type: Mounting rail TS 35/7.5, Rated cross-section: 10 mm<sup>2</sup>, Width: 8 mm, Colour: Beige

| Article number | Article name  | GTIN (EAN)    | Packaging unit |
|----------------|---------------|---------------|----------------|
| <u>17110.2</u> | SRK 6/2A/Z BG | 4044211141752 | 100 ST         |



Feed-through terminal, Screw connection, Mounting type: Mounting rail TS 35/7.5, Rated cross-section: 10 mm<sup>2</sup>, Width: 8 mm, Colour: Beige

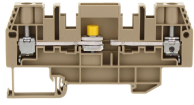
| Article number | Article name    | GTIN (EAN)    | Packaging unit |
|----------------|-----------------|---------------|----------------|
| <u>17117.2</u> | SRK 6/2A SAS BG | 4044211149000 | 80             |



Feed-through terminal, Screw connection, Mounting type: Mounting rail TS 35/7.5, Rated cross-section: 10 mm<sup>2</sup>, Width: 8 mm, Colour: Beige

| Article number | Article name   | GTIN (EAN)    | Packaging unit |
|----------------|----------------|---------------|----------------|
| <u>87805.2</u> | SRK 6/2A Ex BG | 4044211199777 | 100            |

### ##INVERSE##CONTA-CONNECT



Test disconnect terminal, Screw connection, Mounting type: Mounting rail TS 35/7.5,  
Rated cross-section: 6 mm<sup>2</sup>, Width: 8.1 mm, Colour: Beige

| Article number | Article name | GTIN (EAN)    | Packaging unit |
|----------------|--------------|---------------|----------------|
| <u>17521.2</u> | SPTK 6/LT BG | 4044211209162 | 50 ST          |