

May.1.2023 Copyright 2023 HIROSE ELECTRIC CO., LTD. All Rights Reserved.
In case of consideration for using Automotive equipment / device which demand high reliability, kindly contact our sales window correspondents.

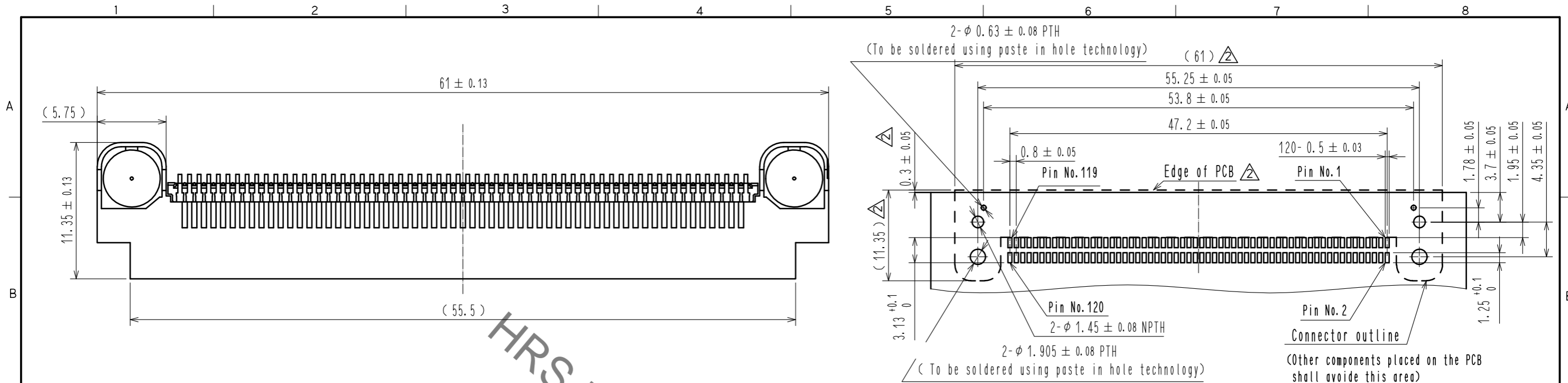


Fig.1 Recommended PCB Layout (All dimensions are symmetric about the center line)

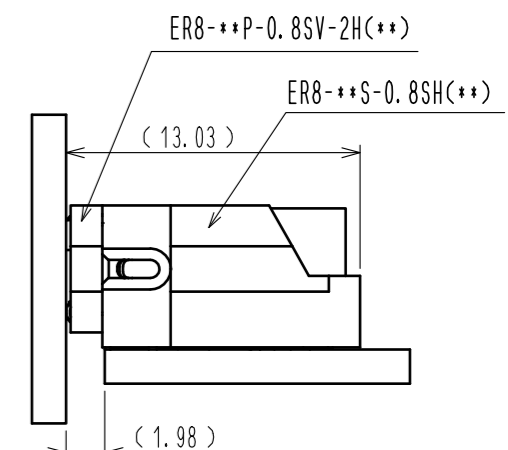
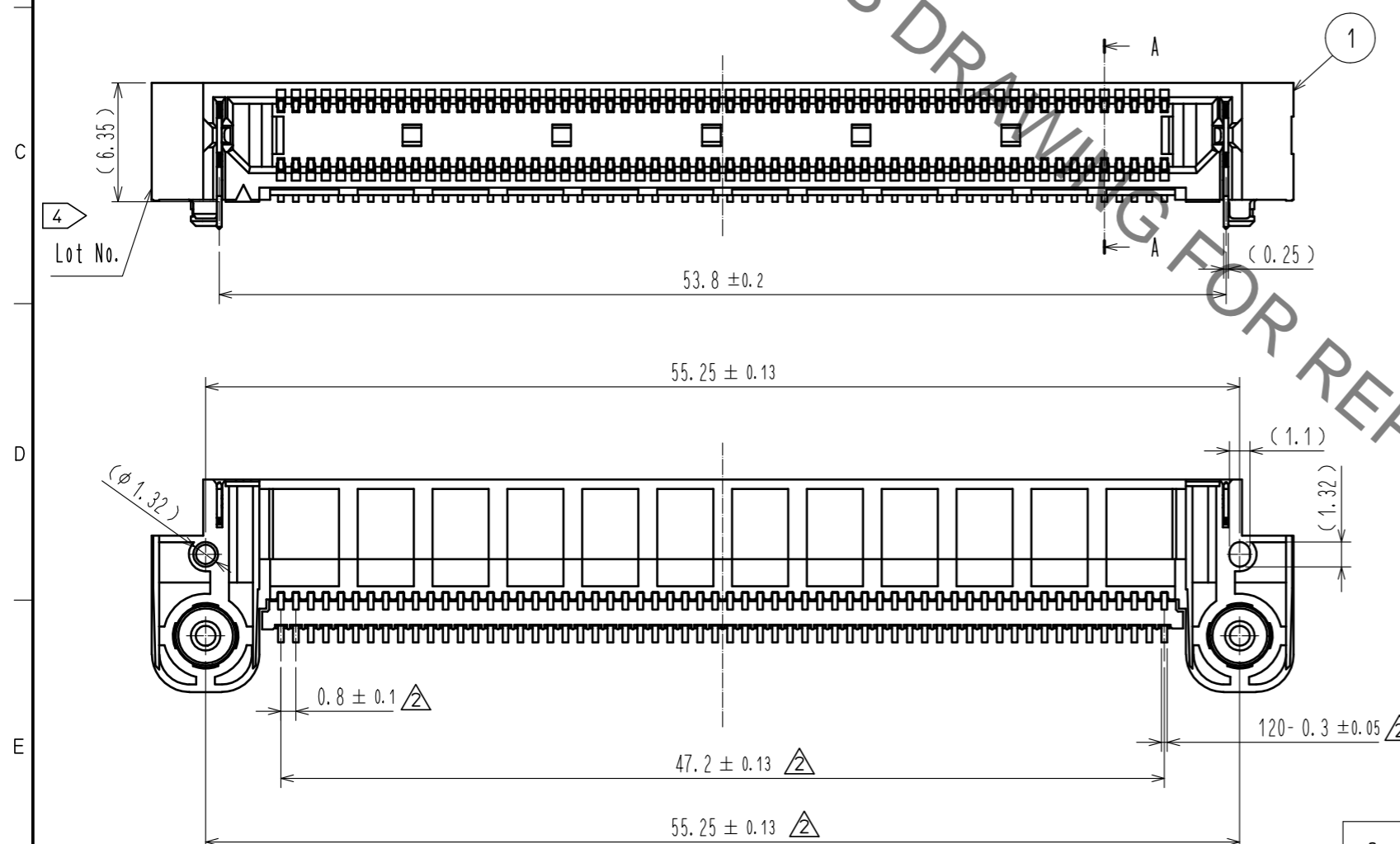


Fig.2 Mated View

- NOTES
1. Lead co-planarity of this product to be 0.15MAX.
 2. () indicates a reference dimension.
 3. Packaging for this product applies embossed carrier tape packaging. 200pcs per reel. See sheet 2/2 for details.
 - 4 Lot No. shall be marked on the indicated position.

| | | | | | |
|-----|--------------|---|-----|--------------|---|
| 3 | COPPER ALLOY | CONTACT AREA : Ni1.25μm + Au0.25μm LEAD AREA : Ni1.25μm + Sn2.54μm | 6 | COPPER ALLOY | Ni1.25μm + Sn2.54μm |
| 2 | LCP | BLACK UL94V-0 | 5 | COPPER ALLOY | Ni1.25μm + Sn2.54μm |
| 1 | LCP | BLACK UL94V-0 | 4 | COPPER ALLOY | CONTACT AREA : Ni1.25μm + Au0.25μm LEAD AREA : Ni1.25μm + Sn2.54μm |
| NO. | MATERIAL | FINISH . REMARKS | NO. | MATERIAL | FINISH . REMARKS |
| 8 | PE | (TOP COVER TAPE) | 7 | PS | (EMBOSSED CARRIER TAPE) |

| | | | | | | | |
|--------------------------------------|--|-------------------------|----------|--------------------------|--------------------|-----------|----------|
| UNITS | | SCALE | COUNT | DESCRIPTION OF REVISIONS | DESIGNED | CHECKED | DATE |
| mm | | 3 : 1 | 12 | DIS-F-00009839 | TF. SUGAWARA | NH. TAMAI | 20210614 |
| HRS HIROSE ELECTRIC CO., LTD. | | APPROVED : MK. EZAKI | 20170331 | DRAWING NO. | EDC-359657-10-00 | | |
| | | CHECKED : MK. EZAKI | 20170331 | PART NO. | ER8-120S-0.8SH(10) | | |
| | | DESIGNED : TF. SUGAWARA | 20170330 | CODE NO. | CL0625-1001-4-10 | | |
| | | DRAWN : TF. SUGAWARA | 20170330 | | | | |

May.1.2023 Copyright 2023 HIROSE ELECTRIC CO., LTD. All Rights Reserved.
 In case of consideration for using Automotive equipment / device which demand high reliability, kindly contact our sales window correspondents.

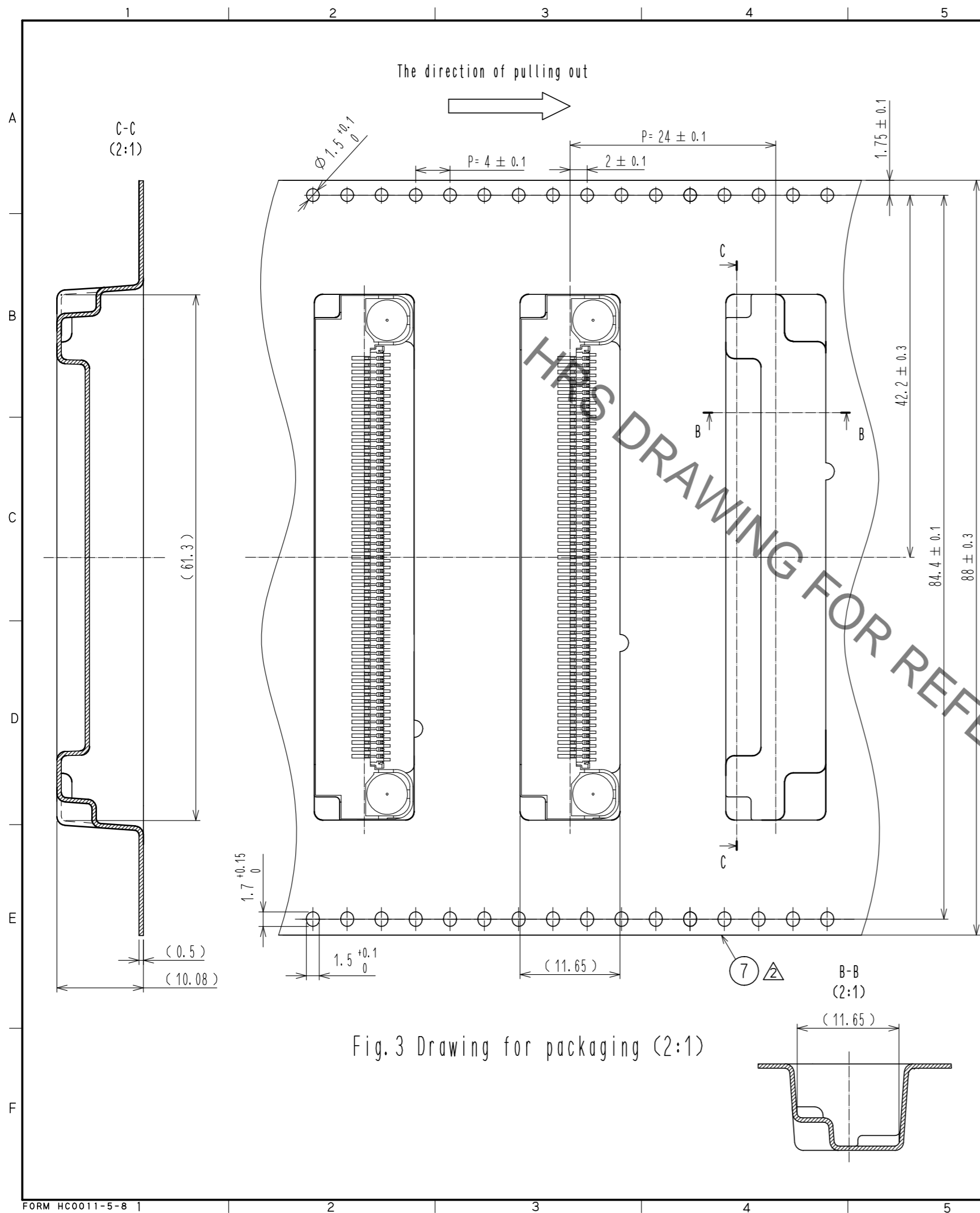


Fig. 3 Drawing for packaging (2:1)

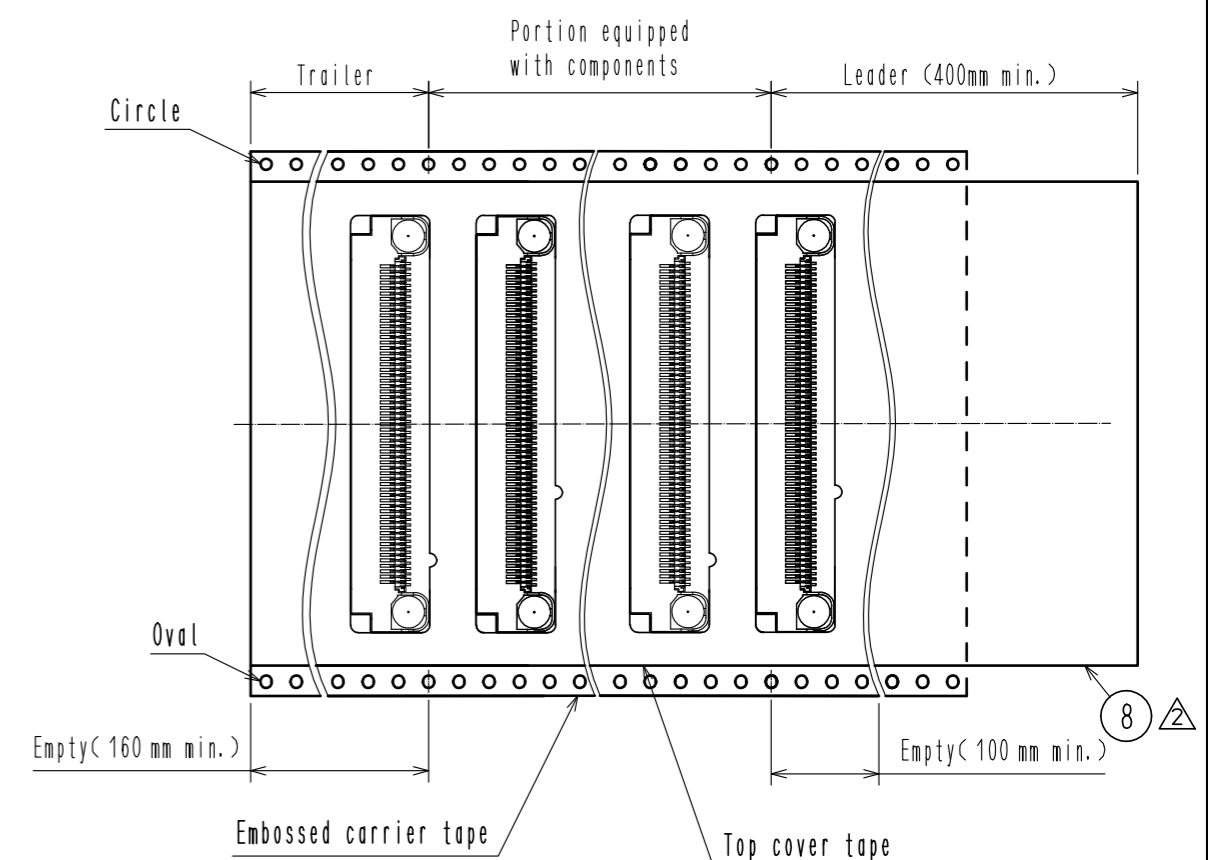


Fig. 4 (Free)

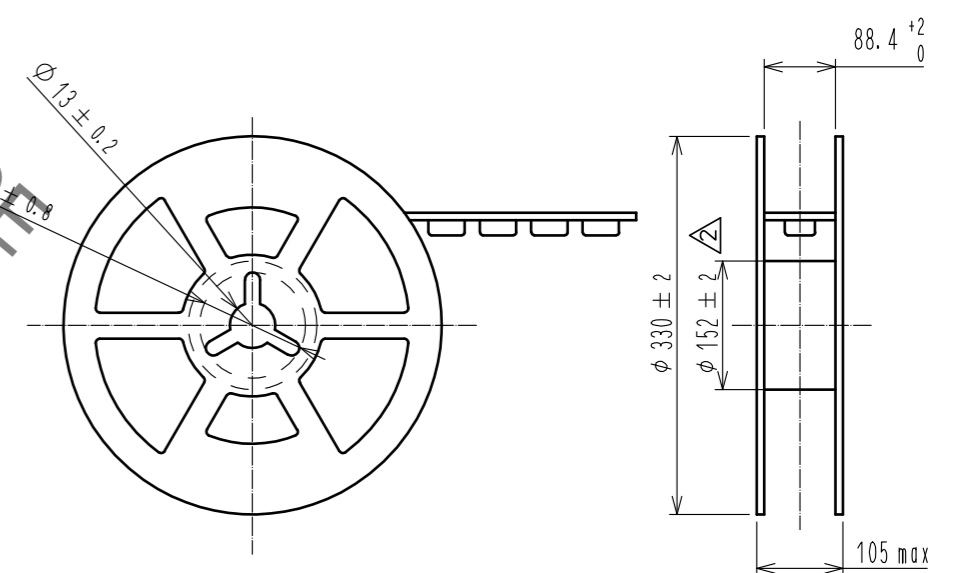


Fig. 5 Detail of reer (Free)

| | | |
|------------|-------------|--------------------|
| HRS | DRAWING NO. | EDC-359657-10-00 |
| | PART NO. | ER8-120S-0.8SH(10) |
| | CODE NO. | CL0625-1001-4-10 |
| | | △ 2/2 |