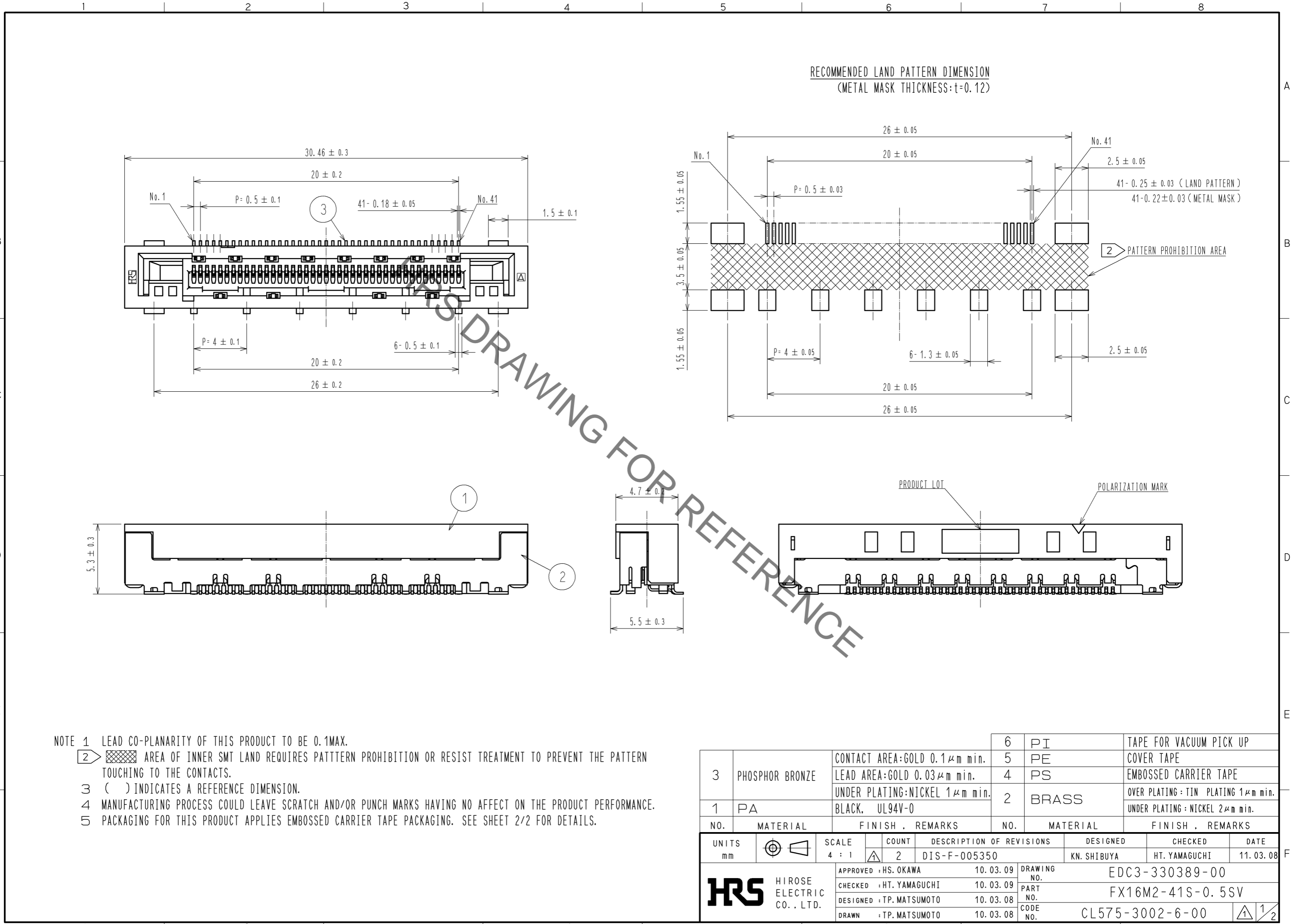


May.1.2023 Copyright 2023 HIROSE ELECTRIC CO., LTD. All Rights Reserved.  
In case of consideration for using Automotive equipment / device which demand high reliability, kindly contact our sales window correspondents.



- NOTE 1 LEAD CO-PLANARITY OF THIS PRODUCT TO BE 0.1MAX.  
 2 AREA OF INNER SMT LAND REQUIRES PATTERN PROHIBITION OR RESIST TREATMENT TO PREVENT THE PATTERN TOUCHING TO THE CONTACTS.  
 3 ( ) INDICATES A REFERENCE DIMENSION.  
 4 MANUFACTURING PROCESS COULD LEAVE SCRATCH AND/OR PUNCH MARKS HAVING NO AFFECT ON THE PRODUCT PERFORMANCE.  
 5 PACKAGING FOR THIS PRODUCT APPLIES EMBOSSED CARRIER TAPE PACKAGING. SEE SHEET 2/2 FOR DETAILS.

NO.	MATERIAL	FINISH . REMARKS	NO.	MATERIAL	FINISH . REMARKS
3	PHOSPHOR BRONZE	CONTACT AREA:GOLD 0.1μm min. LEAD AREA:GOLD 0.03μm min. UNDER PLATING:NICKEL 1μm min.	6	PI	TAPE FOR VACUUM PICK UP
1	PA	BLACK. UL94V-0	5	PE	COVER TAPE
			4	PS	EMBOSSED CARRIER TAPE
			2	BRASS	OVER PLATING : TIN PLATING 1μm min. UNDER PLATING : NICKEL 2μm min.

UNITS	SCALE	COUNT	DESCRIPTION OF REVISIONS	DESIGNED	CHECKED	DATE
mm	4 : 1	2	DIS-F-005350	KN. SHIBUYA	HT. YAMAGUCHI	11. 03. 08

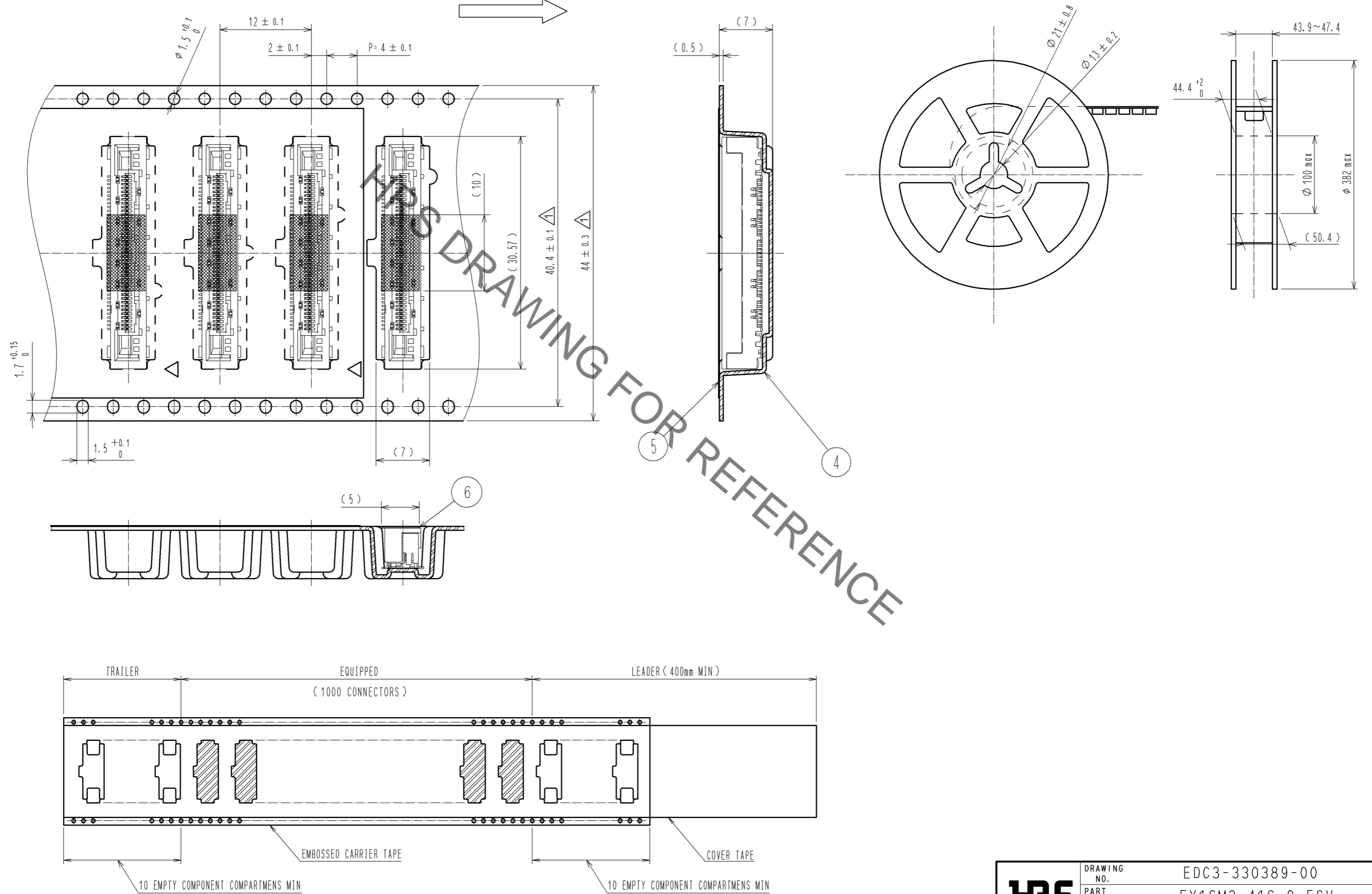
APPROVED	CHECKED	DESIGNED	DRAWN	DRAWING NO.	PART NO.	CODE NO.
HS. OKAWA	HT. YAMAGUCHI	TP. MATSUMOTO	TP. MATSUMOTO	EDC3-330389-00	FX16M2-41S-0.5SV	CL575-3002-6-00
10. 03. 09	10. 03. 09	10. 03. 08	10. 03. 08			

May.1.2023 Copyright 2023 HIROSE ELECTRIC CO., LTD. All Rights Reserved.  
 In case of consideration for using Automotive equipment / device which demand high reliability, kindly contact our sales window correspondents.

DRAWING FOR PACKING (2:1)

REELED DIMENSION (FREE)

THE DIRECITON OF PULLING OUT



THIS DRAWING FOR REFERENCE

<b>HRS</b>	DRAWING NO.	EDC3-330389-00	2/2
	PART NO.	FX16M2-41S-0.5SV	
	CODE NO.	CL575-3002-6-00	