

- 1
- 2
- 3
- 4
- 5
- 6
- 7
- 8
- 9
- 10
- 11
- 12
- 13
- 14
- 15
- 16
- 17
- 18



**MATERIAL**

Anodised aluminium

**COLOUR**

Natural, matte finish.

**ROTATING PIN**

AISI 304 stainless steel.

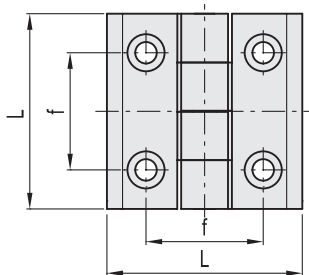
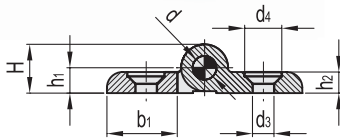
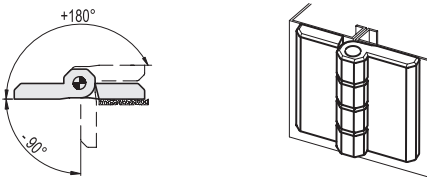
**STANDARD EXECUTION**

Pass-through holes for countersunk head screws.

**ROTATION ANGLE (APPROXIMATE VALUE)**

Max 270° (-90° and +180° being 0° the condition where the two interconnected surfaces are on the same plane).

Do not exceed the rotation angle limit so as not to prejudice the hinge mechanical performance.



Conversion Table	
1 mm = 0.039 inch	
mm	inch
40	1.57
50	1.97
60	2.36

**METRIC**

Code	Description	L	d3	d4	f	H	h1	h2	b1	d	△
428649	CMM-AL-40-SH-5	40	5.5	10.5	25	10.5	5.5	5	17	4	25
428651	CMM-AL-50-SH-5	50	5.5	10.5	30	12.5	6.5	6	22	6	50
428652	CMM-AL-50-SH-6	50	6.5	12.5	30	12.5	6.5	6	22	6	47
428655	CMM-AL-60-SH-8	60	8.5	16.5	36	16.5	8.5	8	25	8	94

**MATERIAL**

Die-cast zinc alloy.

**COLOUR**

Black painting, matte finish.

**ROTATING PIN**

AISI 304 stainless steel.

**GUIDE BUSHINGS FOR PIN**

Polyamide based (PA) technopolymer.

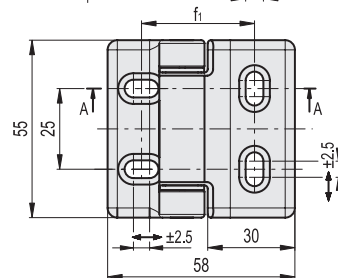
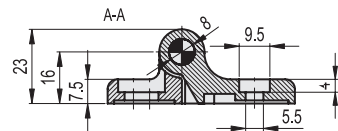
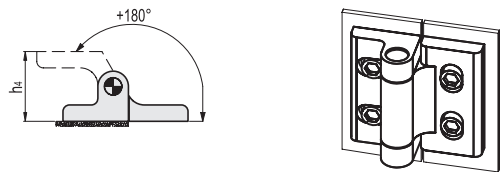
**STANDARD EXECUTION**

Pass-through slotted holes for cylindrical head screws which allow the adjustment during the fitting operation.

**ROTATION ANGLE (APPROXIMATE VALUE)**

Max 180° (-0° and +180° being 0° the condition where the two interconnected surfaces are on the same plane).

Do not exceed the rotation angle limit so as not to prejudice the hinge mechanical performance.



**METRIC**

Code	Description	△
428921	CMZ.55-SL-5	175