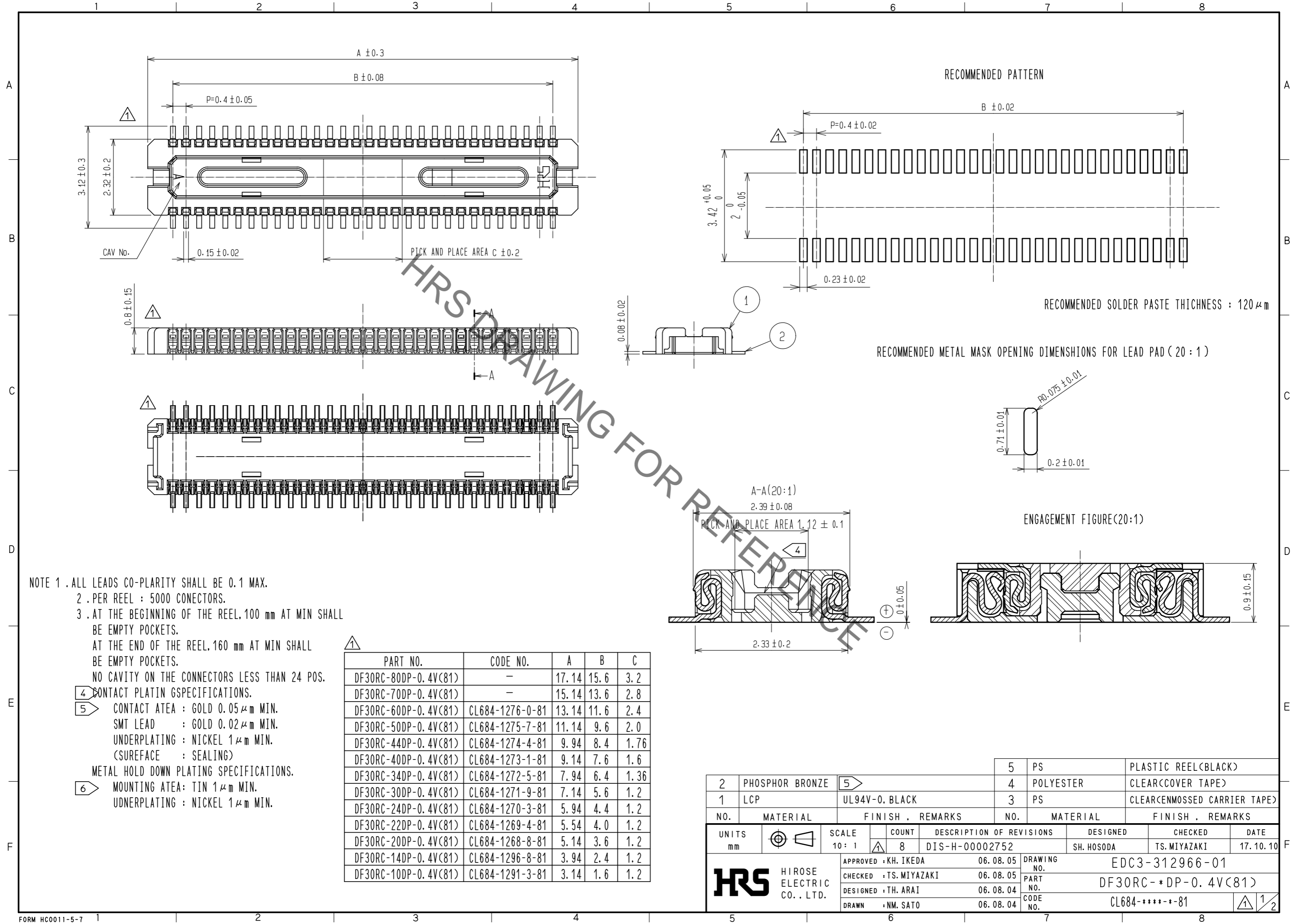


May.1.2023 Copyright 2023 HIROSE ELECTRIC CO., LTD. All Rights Reserved.
In case of consideration for using Automotive equipment / device which demand high reliability, kindly contact our sales window correspondents.



NOTE 1 . ALL LEADS CO-PLARITY SHALL BE 0.1 MAX.
 2 . PER REEL : 5000 CONECTORS.
 3 . AT THE BEGINNING OF THE REEL, 100 mm AT MIN SHALL BE EMPTY POCKETS.
 AT THE END OF THE REEL, 160 mm AT MIN SHALL BE EMPTY POCKETS.
 NO CAVITY ON THE CONNECTORS LESS THAN 24 POS.

- 4 CONTACT PLATIN GSPECIFICATIONS.
- 5 CONTACT ATEA : GOLD $0.05 \mu m$ MIN.
 SMT LEAD : GOLD $0.02 \mu m$ MIN.
 UNDERPLATING : NICKEL $1 \mu m$ MIN.
 (SUREFACE : SEALING)
- 6 METAL HOLD DOWN PLATING SPECIFICATIONS.
 MOUNTING ATEA: TIN $1 \mu m$ MIN.
 UDNERPLATING : NICKEL $1 \mu m$ MIN.

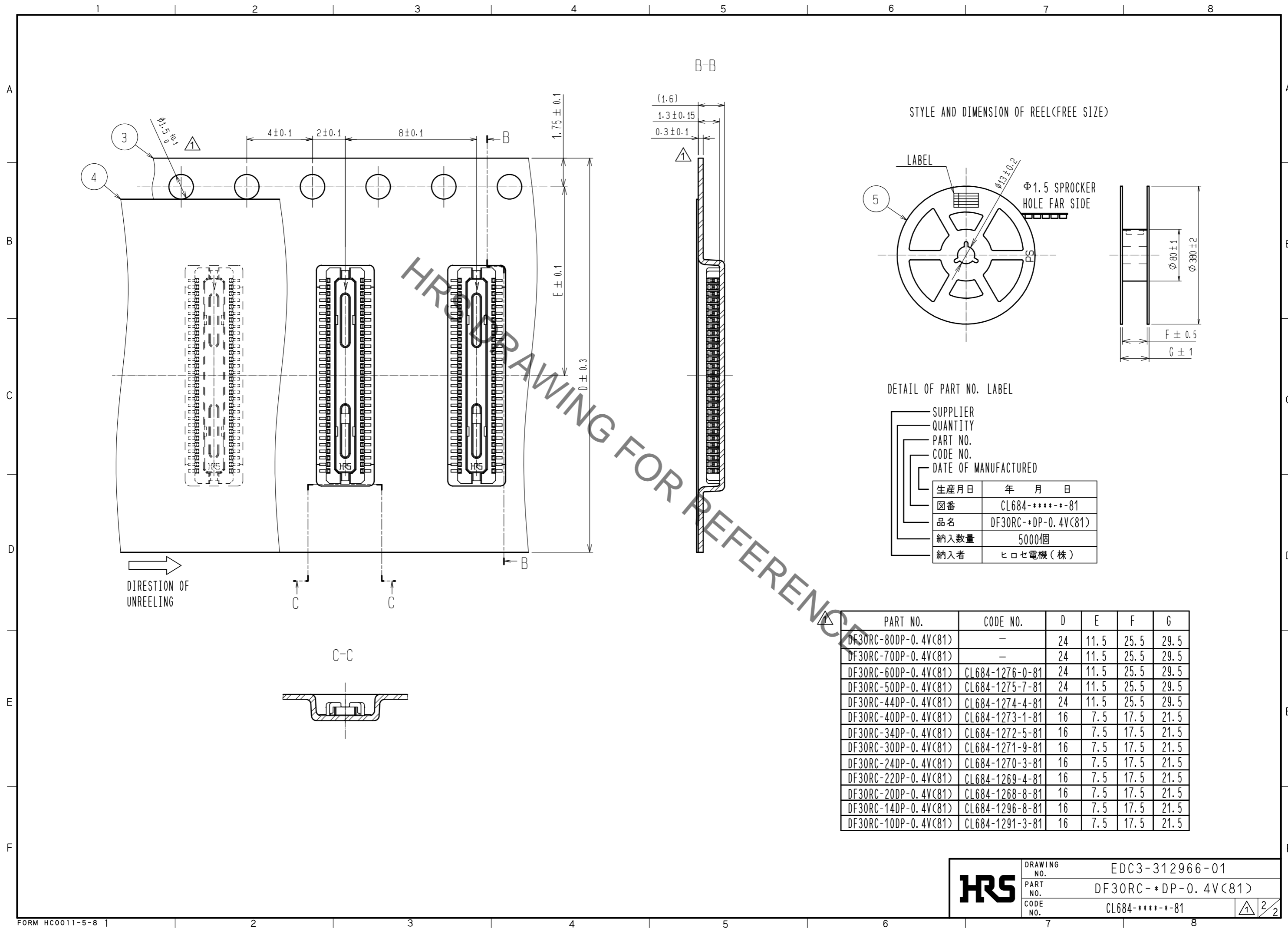
PART NO.	CODE NO.	A	B	C
DF30RC-80DP-0.4V(81)	-	17.14	15.6	3.2
DF30RC-70DP-0.4V(81)	-	15.14	13.6	2.8
DF30RC-60DP-0.4V(81)	CL684-1276-0-81	13.14	11.6	2.4
DF30RC-50DP-0.4V(81)	CL684-1275-7-81	11.14	9.6	2.0
DF30RC-44DP-0.4V(81)	CL684-1274-4-81	9.94	8.4	1.76
DF30RC-40DP-0.4V(81)	CL684-1273-1-81	9.14	7.6	1.6
DF30RC-34DP-0.4V(81)	CL684-1272-5-81	7.94	6.4	1.36
DF30RC-30DP-0.4V(81)	CL684-1271-9-81	7.14	5.6	1.2
DF30RC-24DP-0.4V(81)	CL684-1270-3-81	5.94	4.4	1.2
DF30RC-22DP-0.4V(81)	CL684-1269-4-81	5.54	4.0	1.2
DF30RC-20DP-0.4V(81)	CL684-1268-8-81	5.14	3.6	1.2
DF30RC-14DP-0.4V(81)	CL684-1296-8-81	3.94	2.4	1.2
DF30RC-10DP-0.4V(81)	CL684-1291-3-81	3.14	1.6	1.2

NO.	MATERIAL	FINISH . REMARKS	NO.	MATERIAL	FINISH . REMARKS
2	PHOSPHOR BRONZE	5	PS	PLASTIC REEL(BLACK)	
1	LCP	UL94V-0, BLACK	4	POLYESTER	CLEAR(COVER TAPE)
			3	PS	CLEAR(CENMOSSED CARRIER TAPE)

UNITS	SCALE	COUNT	DESCRIPTION OF REVISIONS	DESIGNED	CHECKED	DATE
mm	10:1	8	DIS-H-00002752	SH. HOSODA	TS. MIYAZAKI	17. 10. 10

APPROVED	DATE	DRAWING NO.
KH. IKEDA	06. 08. 05	EDC3-312966-01
CHECKED	DATE	PART NO.
TS. MIYAZAKI	06. 08. 05	DF30RC- *DP-0.4V(81)
DESIGNED	DATE	CODE NO.
TH. ARAI	06. 08. 04	CL684-****-81
DRAWN	DATE	
NM. SATO	06. 08. 04	

May.1.2023 Copyright 2023 HIROSE ELECTRIC CO., LTD. All Rights Reserved.
 In case of consideration for using Automotive equipment / device which demand high reliability, kindly contact our sales window correspondents.



HRS DRAWING NO. EDC3-312966-01
 PART NO. DF30RC-*DP-0.4V(81)
 CODE NO. CL684-****-*-81