

Multiple relay module, Screw connection, With 16 miniature relays, 1 CO contact each, Plugged in, With illuminated display, Positive switching, Input voltage: 24 VDC

### Business data

|  |               |
|--|---------------|
| Article number                             | 6075.2        |
| Article name                               | RIM16/1W/24V+ |
| GTIN (EAN)                                 | 4044211071677 |
| Packaging unit                             | 1             |
| Quantity unit                              | PC            |
| Weight per piece (not including packaging) | 596.5 g       |
| Weight per piece (including packaging)     | 739 g         |
| Unit of weight                             | G             |
| Customs number                             | 85364900      |
| Country of origin                          | NL            |
| Product description                        | Relay module  |

### Technical data

#### Dimensions

|        |        |
|--------|--------|
| Length | 87 mm  |
| Width  | 291 mm |
| Height | 66 mm  |

#### Ratings

|                      |     |
|----------------------|-----|
| Overvoltage category | III |
| Contamination degree | 2   |

#### Connection data

|  |                      |
|--|----------------------|
| Connection principle                                     | Screw connection     |
| Wire cross-section single core (rigid), min.             | 0.08 mm <sup>2</sup> |
| Wire cross-section single-core (rigid), max.             | 4 mm <sup>2</sup>    |
| Wire cross-section stranded, min.                        | 0.2 mm <sup>2</sup>  |
| Wire cross-section stranded, max.                        | 2.5 mm <sup>2</sup>  |
| Wire cross-section stranded with wire-end ferrules, min. | 0.2 mm <sup>2</sup>  |
| Wire cross-section stranded with wire-end ferrules, max. | 2.5 mm <sup>2</sup>  |
| Stripping length   | 7 mm                 |
| Torque   | 0.6 Nm               |

#### Input data

|                                   |        |
|-----------------------------------|--------|
| Input voltage                     | 24 VDC |
| Number of channels                | 16     |
| Plus switching (source)           | 1      |
| Power consumption                 | 0,6 W  |
| reverse-polarity protection diode | 1      |

#### Output data

|   |                     |
|---|---------------------|
| Switching voltage / switching voltage max.    | 250 / 250 VAC       |
| Continuous current max. / Inrush current max. | 6 / 10 A            |
| Contact configuration                         | 1 CO contact        |
| Switching capacity, max.                      | 2000 VA             |
| Electrical lifespan (AC1)                     | 1,5x10 <sup>7</sup> |
| Mechanical lifespan                           | 10x10 <sup>7</sup>  |

---

### Technical data

---

#### Materials

|                           |            |
|---------------------------|------------|
| Contact material          | AgNi 90/10 |
| Working temperature, min. | -20 °C     |
| Working temperature, max. | 55 °C      |

#### Further technical data

|                                 |          |
|---------------------------------|----------|
| Protection class                | IP20     |
| Insulation voltage coil/contact | 4 kV     |
| Status display red              | ✓        |
| Free-wheel diode                | ✓        |
| Response/release time           | 9 / 7 ms |
| Pinning                         | 3.5 mm   |
| Pluggable relay                 | ✓        |

#### Environmental Product Compliance

|                                |            |
|--------------------------------|------------|
| REACH Conform                  | yes        |
| REACH Reference date           | 2023-01-17 |
| REACH Candidate Substance Note | No         |
| RoHS Conform                   | yes        |

---

### Approvals

---

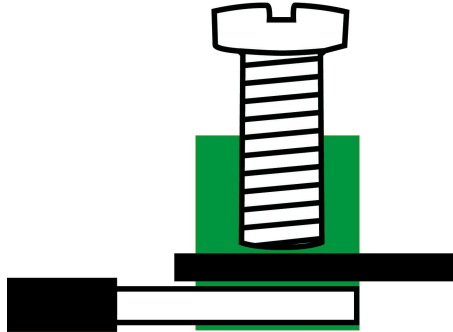
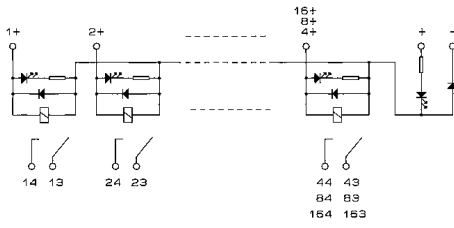
#### Standards and regulations

---

|                            |                         |
|----------------------------|-------------------------|
| CE compliant               | yes                     |
| Standards / specifications | DIN VDE 0110 / EN 50178 |

---

### Media



---

### Accessories

---