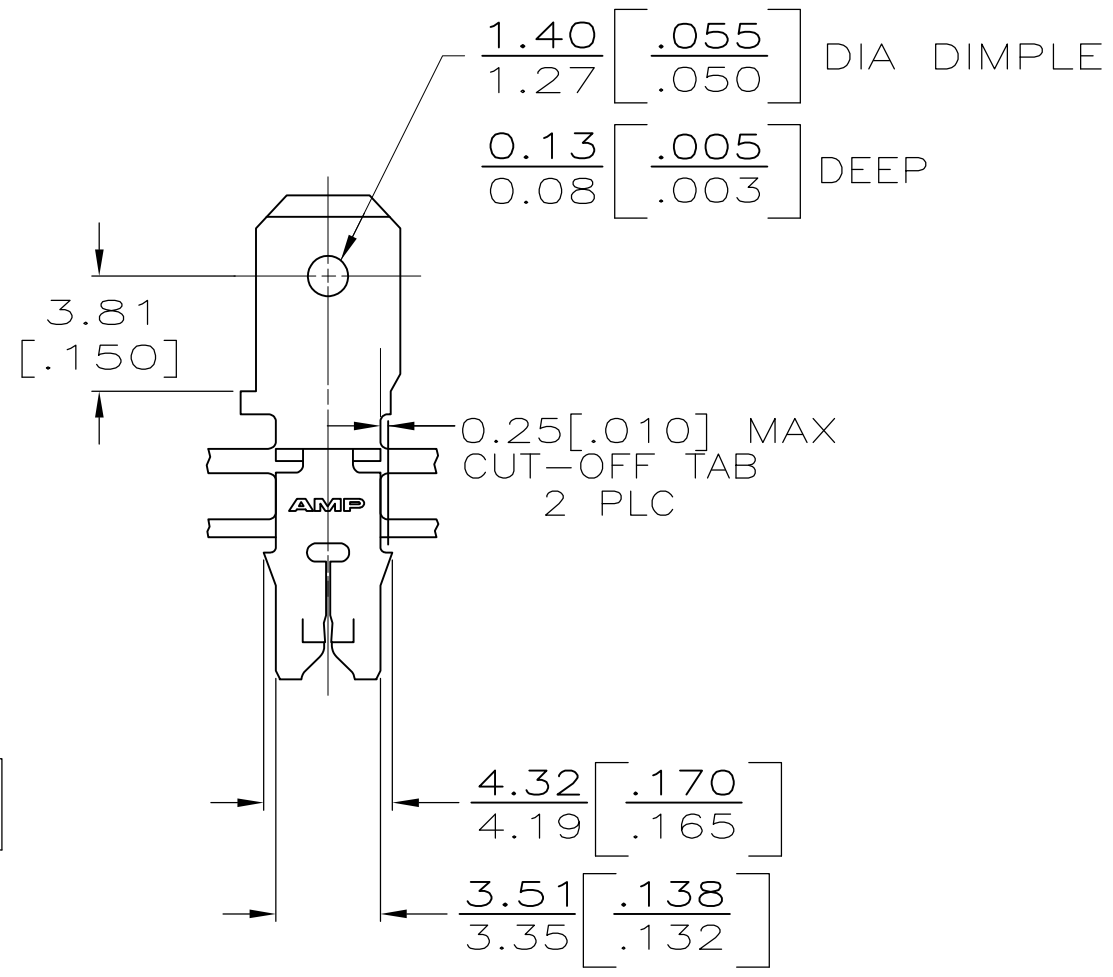
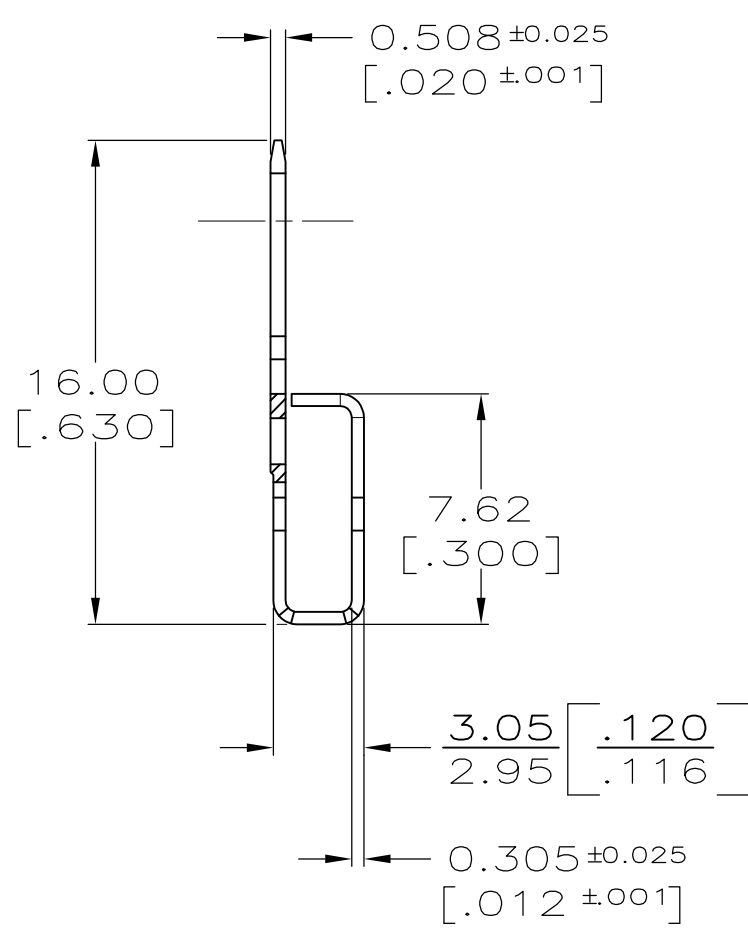
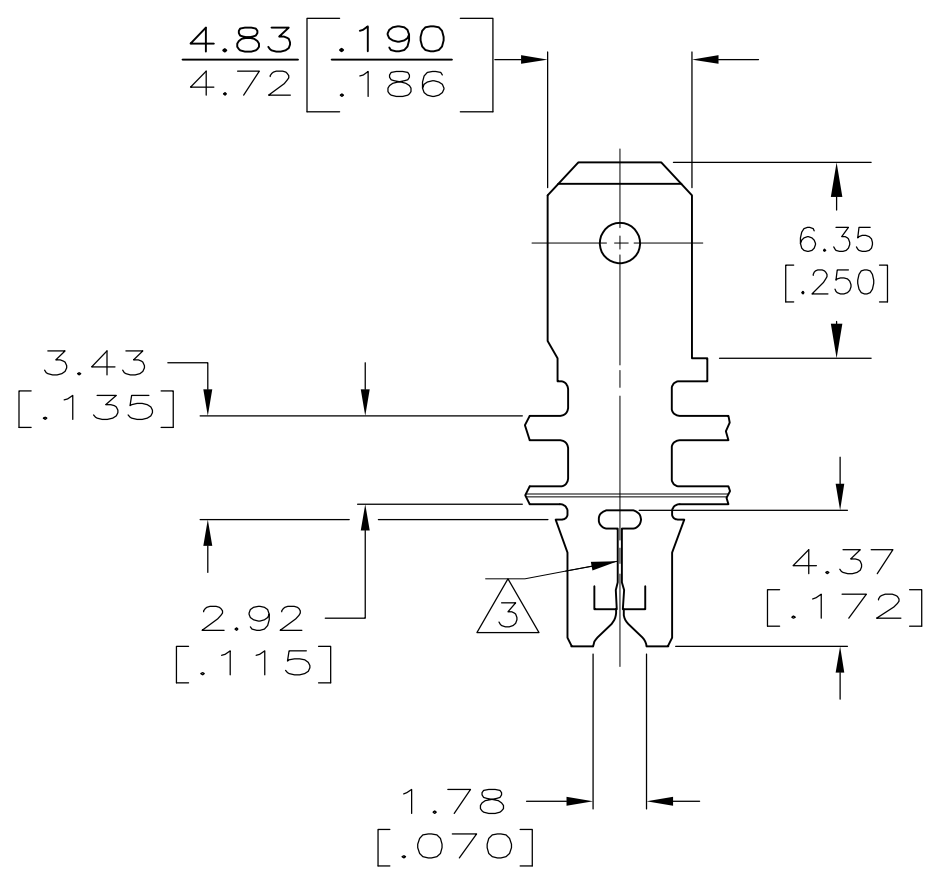


THIS DRAWING IS UNPUBLISHED. RELEASED FOR PUBLICATION  
 © COPYRIGHT - By - ALL RIGHTS RESERVED.

LOC	DIST	REVISIONS					
AF	50	P	LTR	DESCRIPTION	DATE	DWN	APVD
		R2		ECR-15-005665	10AUG2015	BDA	PKS



1 CONTINUOUS STRIP ON REELS WITH TERMINALS LOCATED ON 5.59 [.220] CENTERS

3 SLOT TERMINATES EITHER SINGLE OR DOUBLE MAGNET WIRE OF THE SAME SIZE, COPPER 0.25-0.36mm [#30-#27 AWG] ALUMINUM 0.32-0.45mm [#28-#25 AWG] ALUMINUM WIRE RANGE APPLIES FOR POST-TIN PLATED VERSIONS ONLY.

2 AFTER INSERTION INTO PLASTIC HOLDER TAB PORTION MUST BE BENT OVER 45° TO 90° OR POTTED-IN TO PREVENT PULL-OUT WHEN MATING RECEPTACLE IS DISCONNECTED

62512-1  
PART NO

THIS DRAWING IS A CONTROLLED DOCUMENT.		DWN D.K. SCHRUM 12/4/89	<b>STE</b> TE Connectivity	
DIMENSIONS: MM [INCHES]		CHK M.S. FEHER 12/19/89		
TOLERANCES UNLESS OTHERWISE SPECIFIED:		APVD N. NEFF 12/19/89	NAME TAB, .187 FASTON, MAG-MATE	
0 PLC ± -		PRODUCT SPEC 108-2012	SIZE CAGE CODE DRAWING NO RESTRICTED TO	
1 PLC ± -		APPLICATION SPEC 114-2046	A3 00779 C-62512	
2 PLC ± -		WEIGHT -	SCALE 4:1 SHEET 1 OF 1 REV R2	
3 PLC ± 0.38 [.015]		CUSTOMER DRAWING		
4 PLC ± -				
ANGLES ± -				
MATERIAL FINISH				
BRASS TIN PLATE				