



Insulated cross-connector, No. of poles: 9, Mounting type: Plug in, Width: 88.2 mm, Rated cross-section: 10 mm², Colour: Yellow

RAL: 1026

Business data

Article number	<u>17238.8</u>
Article name	SQI 10/9 YE
GTIN (EAN)	4044211148911
Packaging unit	10
Quantity unit	PC
Weight per piece (not including packaging)	12 g
Weight per piece (including packaging)	12.1 g
Unit of weight	G
Customs number	85389099
Country of origin	DE
Prio-Article	17238.8
Product description	Insulated cross-connector

Technical data

Dimensions

Length	4 mm
Width	88.2 mm
Height	23 mm
Pitch size	10 mm

Ratings

Voltage with partition, max.	1000 V
Voltage without partition, max.	1000 V
Rated current	57 A
Current load, max.	57 A
Rated cross-section	10 mm ²
Contamination degree	2

Connection data

No. of poles	9
--------------	---

Materials

Material	Copper alloy
Insulation housing	Polyamide 6.6
Flammability class UL 94	V-2
Working temperature, min.	-40 °C
Working temperature, max.	105 °C

Further technical data

Mounting type	Plug in
Insulation available	✓
Touch protection is available	✓
Number of bridged terminals	9

Environmental Product Compliance

REACH Conform	yes
REACH Candidate Substance Note	No
RoHS Conform	yes

Data sheet

17238.8 SQI 10/9 YE



Media

Accessories

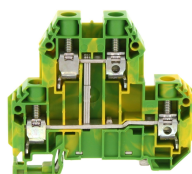
Insulation cap for cross-connector



Insulating cap, Colour: Yellow

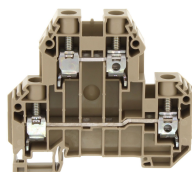
Article number	Article name	GTIN (EAN)	Packaging unit
<u>17200.8</u>	SQIK 2,5-10 YE	4044211148539	20

##INVERSE##CONTA-CONNECT



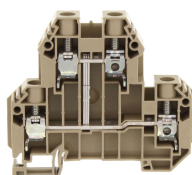
Protective-earth double-level terminal, Screw connection, Mounting type: Mounting rail TS 35/7.5, Rated cross-section: 10 mm², Width: 10.1 mm, Colour: Green-yellow

Article number	Article name	GTIN (EAN)	Packaging unit
<u>17192.2</u>	SSLD 10 GNYE	4044211190804	50 ST



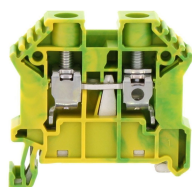
Double-level terminal, Screw connection, Mounting type: Mounting rail TS 35/7.5, Rated cross-section: 10 mm², Width: 10.1 mm, Colour: Beige

Article number	Article name	GTIN (EAN)	Packaging unit
<u>17190.2</u>	SRKD 10 BG	4044211190767	50



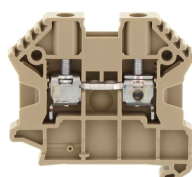
Double-level terminal, Screw connection, Mounting type: Mounting rail TS 35/7.5, Rated cross-section: 10 mm², Width: 10.1 mm, Colour: Beige

Article number	Article name	GTIN (EAN)	Packaging unit
<u>17191.2</u>	SRKD 10/SV BG	4044211190781	50



Protective earth terminal, Screw connection, Mounting type: Mounting rail TS 35/7.5, Rated cross-section: 16 mm², Width: 10 mm, Colour: Green-yellow

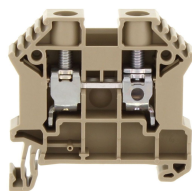
Article number	Article name	GTIN (EAN)	Packaging unit
<u>17115.2</u>	SSL 10/2A GNYE	4044211141806	100 ST



Feed-through terminal, Screw connection, Mounting type: Mounting rail TS 35/7.5, Rated cross-section: 16 mm², Width: 10 mm, Colour: Beige

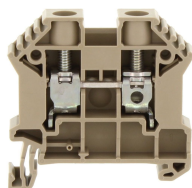
Article number	Article name	GTIN (EAN)	Packaging unit
<u>17113.2</u>	SRK B 10/2A BG	4044211141783	100

##INVERSE##CONTA-CONNECT



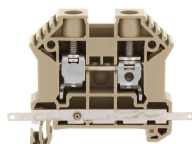
Feed-through terminal, Screw connection, Mounting type: Mounting rail TS 35/7.5, Rated cross-section: 16 mm², Width: 10 mm, Colour: Beige

Article number	Article name	GTIN (EAN)	Packaging unit
<u>17112.2</u>	SRK 10/2A BG	4044211141776	100



Feed-through terminal, Screw connection, Mounting type: Mounting rail TS 35/7.5, Rated cross-section: 16 mm², Width: 10 mm, Colour: Beige

Article number	Article name	GTIN (EAN)	Packaging unit
<u>17114.2</u>	SRK 10/2A/Z BG	4044211141790	100



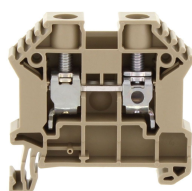
Feed-through terminal, Screw connection, Mounting type: Mounting rail TS 35/7.5, Rated cross-section: 16 mm², Width: 10 mm, Colour: Beige

Article number	Article name	GTIN (EAN)	Packaging unit
<u>17118.2</u>	SRK 10/2A SAS BG	4044211149024	80



Feed-through terminal, Screw connection, Mounting type: Mounting rail TS 35/7.5, Rated cross-section: 16 mm², Width: 10 mm, Colour: Black-yellow

Article number	Article name	GTIN (EAN)	Packaging unit
<u>17133.2</u>	SRK 10/2A/PE BKYE	4044211200725	100 ST



Feed-through terminal, Screw connection, Mounting type: Mounting rail TS 35/7.5, Rated cross-section: 16 mm², Width: 10 mm, Colour: Beige

Article number	Article name	GTIN (EAN)	Packaging unit
<u>87807.2</u>	SRK 10/2A Ex BG	4044211199807	100