

LT8391D

Synchronous 4-Switch Buck-Boost LED Driver 6V to 45V Input, Up to 50V LED

DESCRIPTION

Evaluation circuit EVAL-LT8391D-AZ is a 4-switch synchronous buck-boost LED driver featuring the [LT[®]8391D](#). It drives a single string of LEDs at up to 1.5A and up to 50V when V_{IN} is between 6V and 45V. EVAL-LT8391D-AZ runs at 400kHz switching frequency and efficiency can exceed 97%. It comes with low EMI features including optimized layout, spread spectrum frequency modulation (SSFM) and input EMI filter. SSFM can be turned on or off with a simple jumper.

The LT8391D 4-switch buck-boost controller is the new member of the LT8391 family (see Table 1). It has an input voltage range of 4V to 60V and output voltage range of 0V to 60V. It has input under voltage lockout (UVLO) which can also be used to enable or disable the controller. On the output side, it is protected against both open and short LED conditions.

The LT8391D allows adjustable switching frequency between 150kHz and 650kHz. It can be PWM dimmed with an external PWM signal. When run with PWM dimming and either fixed switching frequency or SSFM, the internal oscillator aligns itself with the PWM signal for flicker-free operation. On EVAL-LT8391D-AZ, the PWM pin is pulled up to $INTV_{CC}$ through a 100k resistor. Therefore, the LED string is 100% ON when there is no external PWM signal. It can also be analog dimmed with a control voltage on its control pin (CTRL).

EVAL-LT8391D-AZ features MOSFETs that complement the 5V gate drive of the LT8391D to achieve high efficiency. All MOSFETs used on the 4-switch topology are rated at 60V and AEC-Q101 qualified. Ceramic capacitors

are used at both input and output side due to their small size and high ripple current capability. In addition to ceramic capacitors, there is one aluminum electrolytic capacitor at the input side to mitigate the effects of the input and output transients.

Sense resistor for LED current can be placed either on high side (LED+) or low side (GND). With high side sense resistor, LED- is directly connected to GND. This gives the option to run only one wire (LED+) to LED string and use chassis ground as return path in automotive or similar applications. LT8391D guarantees $\pm 4\%$ current regulation accuracy with high side sense resistor. Low side sense resistor gives the most accurate LED current regulation. EVAL-LT8391D-AZ implemented both high side and low side sense resistors, with high side sense resistor as default and low side sense resistor as optional.

The LT8391D data sheet gives a complete description of the part, operation and applications information. The data sheet must be read in conjunction with this user guide for evaluation circuit EVAL-LT8391D-AZ. The LT8391DJUFDM is assembled in a 28-lead plastic 4mm \times 5mm QFN package with a thermally enhanced GND pad. Proper board layout is essential for maximum thermal performance and EMI performance. Please see the evaluation kit design files for details, including top layer layout, inner traces and grounding.

Refer to the Emission Results section for the excellent EMI performance of this evaluation board.

[Design files for this circuit board are available.](#)

All registered trademarks and trademarks are the property of their respective owners.

DEMO MANUAL

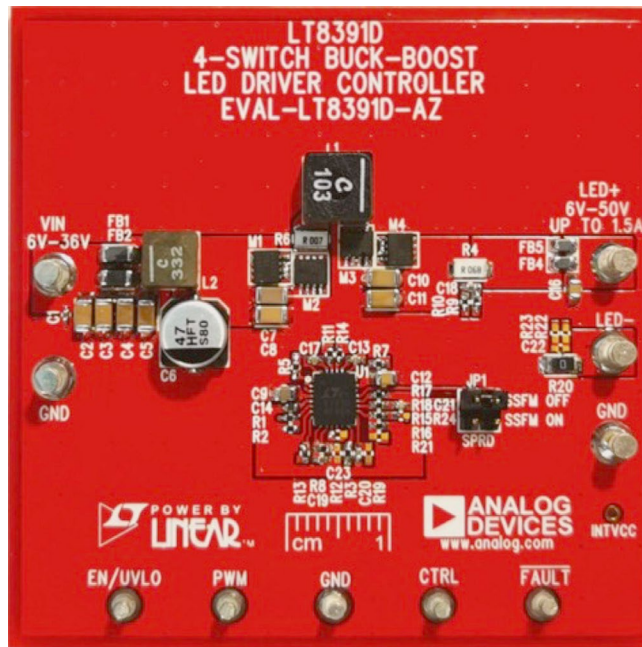
EVAL-LT8391D-AZ

DESCRIPTION

Table 1. Comparison of LT839X Family

	LT8391	LT8391A	LT8391D	LT8393
V _{IN} Range	4V ~ 60V	4V ~ 60V	4V ~ 60V	4V ~ 60V
V _{OUT} Range	0V ~ 60V	0V ~ 60V	0V ~ 60V	0V ~ 100V
f _{SW}	150kHz ~ 650kHz	600kHz ~ 2MHz	150kHz ~ 650kHz	350kHz ~ 2MHz
Clock Sync	Yes	Yes	No	Yes
SSFM	Yes	Yes	Yes	Yes
PWM Dimming	External and 128:1 Internal	External and 128:1 Internal	External	External and 128:1 Internal
PWM Driver	5V High Side	5V High Side	N/A	10V High Side
FB Short LED Threshold	0.25V Falling	0.25V Falling	0.05V Falling	0.25V Falling
Package	FE28 and UFD28	FE28 and UFD28	UFD28	FE28 and UFD28
Temperature Range	-40°C to 150°C	-40°C to 150°C	-40°C to 150°C	-40°C to 150°C
Price	Normal	Low	Lowest	Normal

BOARD PHOTO



PERFORMANCE SUMMARY Specifications are at $T_A = 25^\circ\text{C}$

PARAMETER	CONDITION	MIN	TYP	MAX	UNIT
Input Voltage V_{IN} Range (Output $\leq 22.5\text{W}$)	Operating, $6\text{V} \leq V_{LED} \leq 50\text{V}$, $I_{LED} \leq 1.5\text{A}$	6		45	V
Input Voltage V_{IN} Range (Output $\leq 45\text{W}$)	Operating, $6\text{V} \leq V_{LED} \leq 36\text{V}$, $I_{LED} \leq 1.5\text{A}$	9		45	V
Safe Input Voltage V_{IN} Range		0		50	V
V_{IN} Undervoltage Lockout (UVLO) Falling	Operating, $V_{LED} = 30\text{V}$, $I_{LED} = 1.5\text{A}$		4.2		V
V_{IN} Enable Turn-On (EN) Rising			5.0		V
Switching Frequency (f_{SW})	R17 = 100k, SSFM = OFF R17 = 100k, SSFM = ON		400 340 to 460		kHz kHz
LED Current I_{LED}	R4 = 0.068Ω , $9\text{V} < V_{IN} < 45\text{V}$, $6\text{V} \leq V_{LED} \leq 30\text{V}$, $V_{CTRL} = 2\text{V}$		1.47		A
LED Voltage V_{LED} Range	R15 = 1M, R16 = 17.4k	6		50	V
Open LED Voltage V_{OUT}	R15 = 1M, R16 = 17.4k		55.5		V
Efficiency (100% PWM DC)	$V_{IN} = 12.0\text{V}$, $V_{LED} = 30\text{V}$, $I_{LED} = 1.5\text{A}$, SSFM = ON or OFF, EMI Filters Included		94		%

QUICK START PROCEDURE

The EVAL-LT8391D-AZ is easy to set up to evaluate the performance of the LT8391D. Refer to Figure 1 for proper measurement equipment setup and follow the procedure below.

NOTE: Make sure that the voltage applied to V_{IN} does not exceed 50V.

1. With power off, connect a string of LEDs that runs with a forward voltage less than or equal to 50V at 1.5A to the LED+ and LED- terminals.
2. Connect the EN/UVLO terminal to GND.
3. To enable spread spectrum frequency modulation, set JP1 to "SSFM ON". Setting JP1 to "SSFM OFF" turns off SSFM.
4. With power off, connect the input power supply to the V_{IN} and GND terminals.
5. Turn the input power supply on and make sure the voltage is between 6V and 45V for proper operation.
6. Release the EN/UVLO-to-GND connection.

7. Observe the LED string running at the programmed LED current.
8. To change the brightness with analog dimming, simply attach a voltage source to the CTRL terminal and set the voltage between 0V and 1.35V. See data sheet for details.
9. To change brightness with external PWM dimming, attach a 0V to 3V rectangular waveform with varying duty cycle to the PWM terminal.

Optimize Efficiency

If the EMI performance is less of a priority than efficiency and thermal performance, the EMI filters and gate resistors for MOSFETs can be removed (short the ferrite beads and inductor in EMI filters and short all gate resistors). The components for EMI filters are listed separately in the parts list. The gate resistors are R5, R7, R11 and R14. Figure 2 gives the efficiency curves with and without EMI filters and gate resistors.

QUICK START PROCEDURE

High Side and Low Side Sense Resistors

EVAL-LT8391D-AZ implemented both high side and low side LED current sense resistors to facilitate different application requirements. With high side sense resistor, LED- is directly connected to GND. This gives the option to run only one wire (LED+) to LED string and use chassis ground as return path in automotive or similar applications. If this feature is not necessary, the sense resistor can be placed on the low side to get the most accurate

current regulation. By default, EVAL-LT8391D-AZ is assembled with high-side sense resistor. To switch to low side sense resistor, please follow these steps:

1. Remove R9, R10 and short R4.
2. Populate R22 and R23 with 0Ω resistors.
3. Populate C22 with 2.2μF/6.3V capacitor (same part number as C18).
4. Cut the trace that shorts R20 and populate R20 with 0.068Ω resistor (same part number as R4).

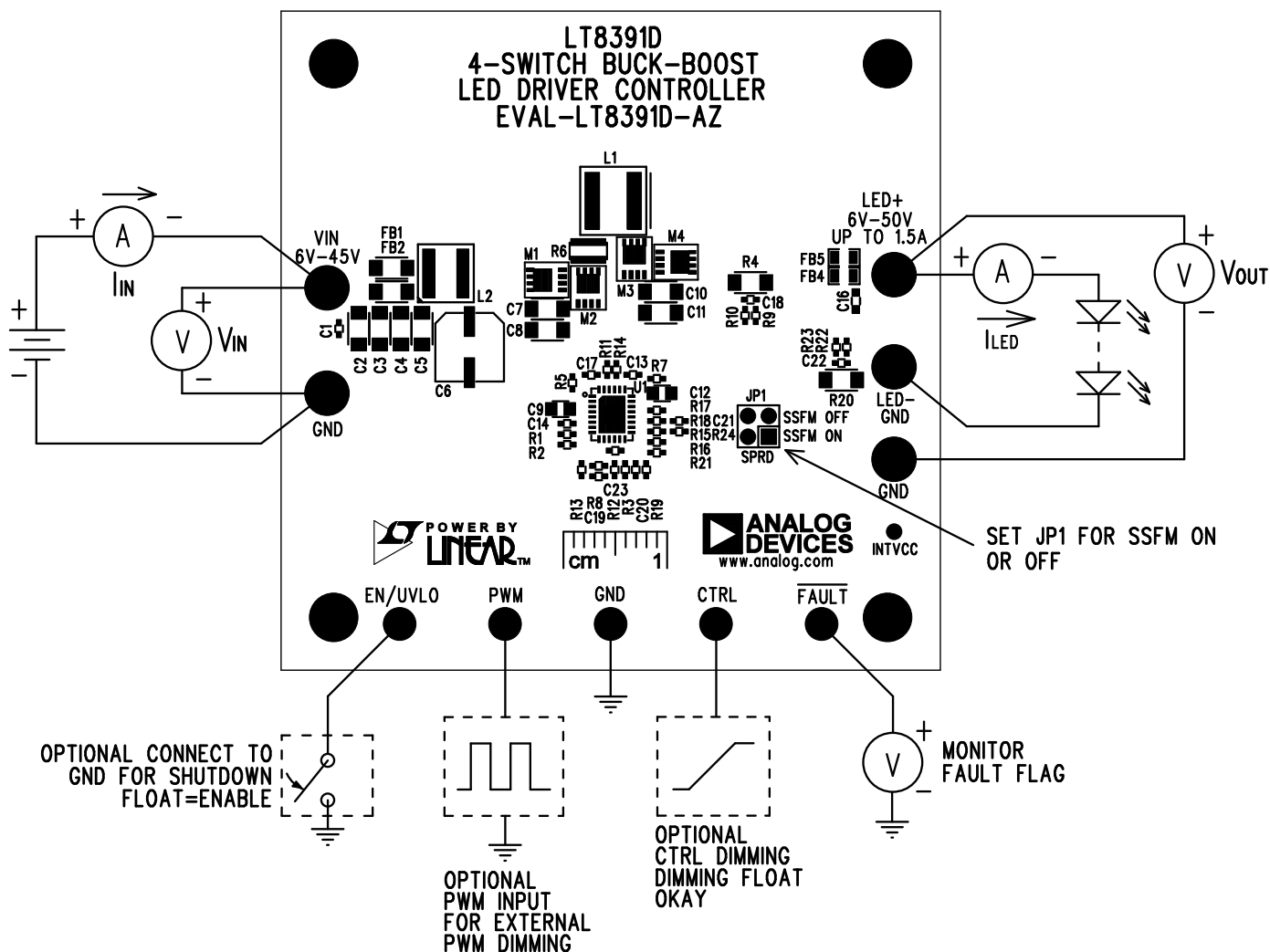


Figure 1. Test Procedure Setup Drawing for EVAL-LT8391D-AZ

TEST RESULTS

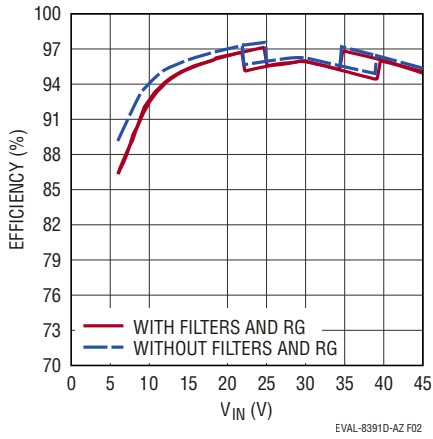


Figure 2. Efficiency vs V_{IN} with and without Filters and Gate Resistors ($V_{LED} = 30V$, $I_{LED} = 1.5A$, SSFM OFF)

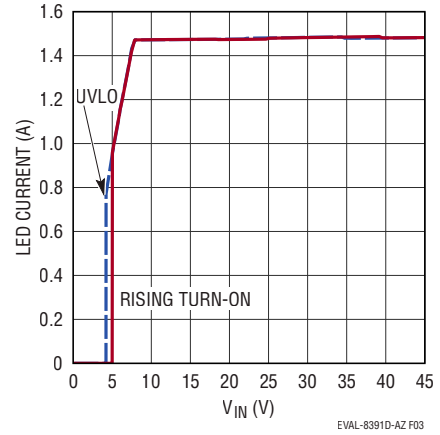
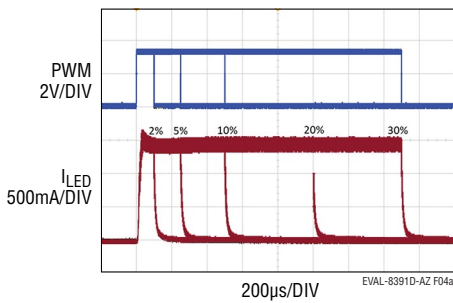
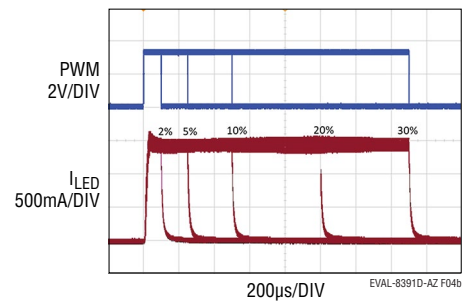


Figure 3. I_{LED} vs V_{IN} ($V_{LED} = 30V$, $I_{LED} = 1.5A$, SSFM OFF); Below $8V_{IN}$, I_{LED} Scales Back Based Upon $I_{SW,P-P}$



(a) SSFM OFF



(b) SSFM ON

Figure 4. PWM Dimming ($V_{IN} = 12V$, $V_{LED} = 30V$, 200Hz PWM)

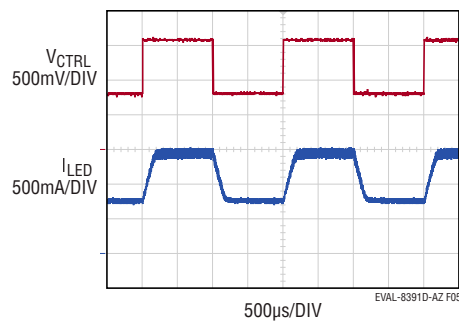


Figure 5. I_{LED} Load Transient with CTRL Input ($V_{IN} = 12V$, $V_{LED} = 30V$, SSFM OFF, I_{LED} Transient Between 0.75A and 1.5A)

TEST RESULTS

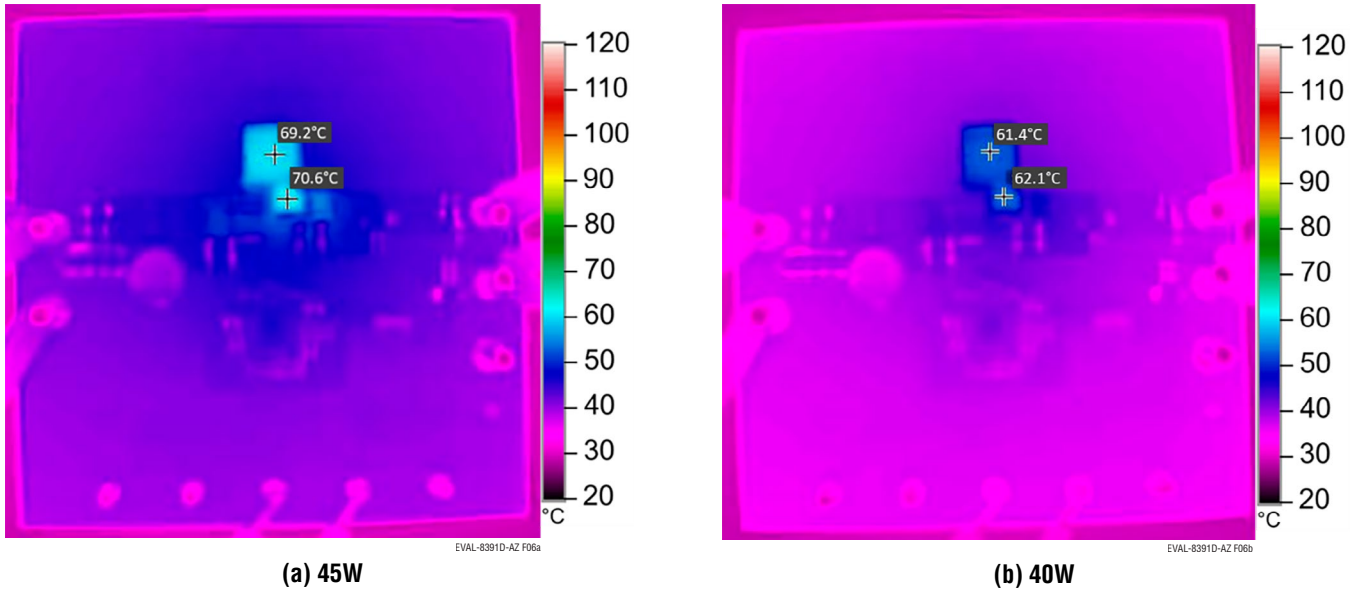


Figure 6. Thermal Image with 12V_{IN}, 30V_{LED}, SSFM OFF

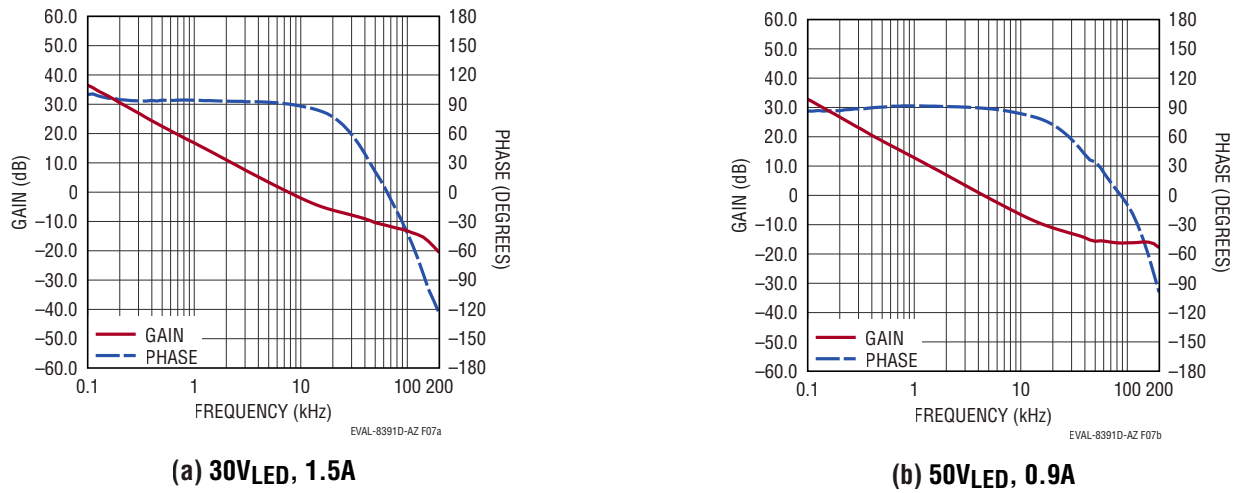
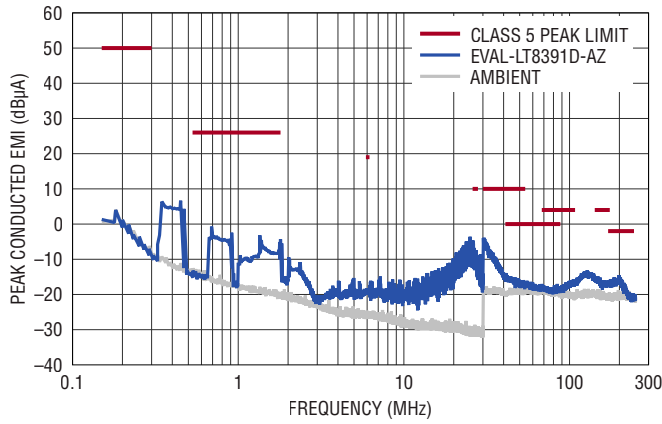
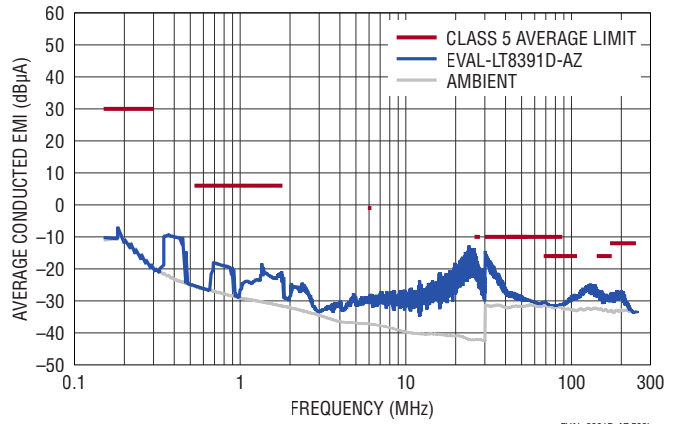


Figure 7. Bode Plots with 12V_{IN}

EMISSION RESULTS

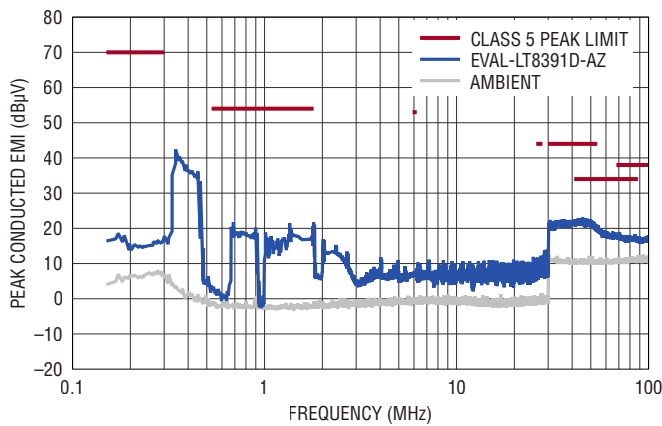


(a) CISPR25 Peak Conducted EMI – Current Method

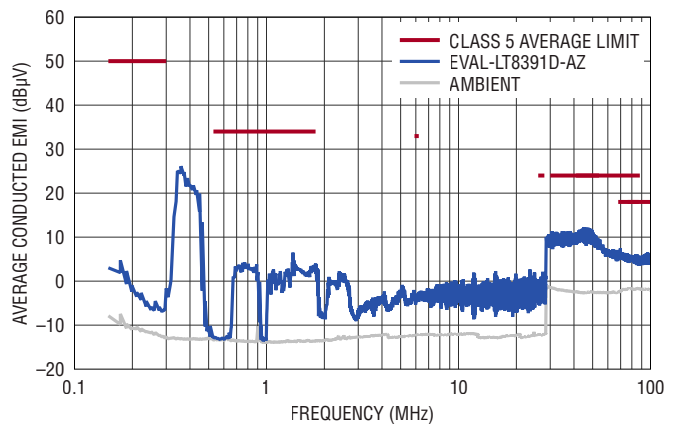


(b) CISPR25 Average Conducted EMI – Current Method

Figure 8. Conducted Emissions (Current Method): $V_{LED} = 30V$, $I_{LED} = 1.5A$, SSFM ON

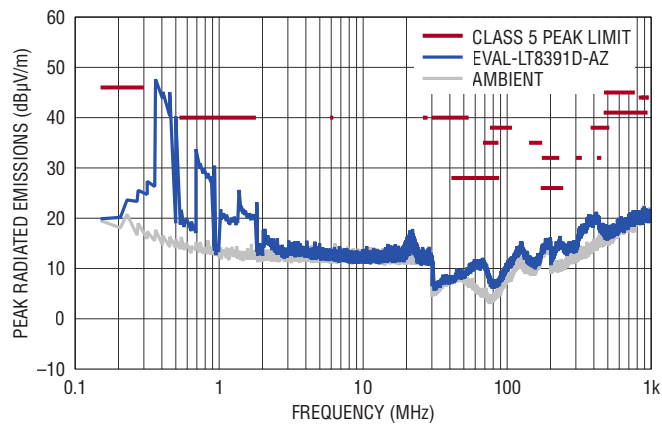


(a) CISPR25 Peak Conducted EMI – Voltage Method

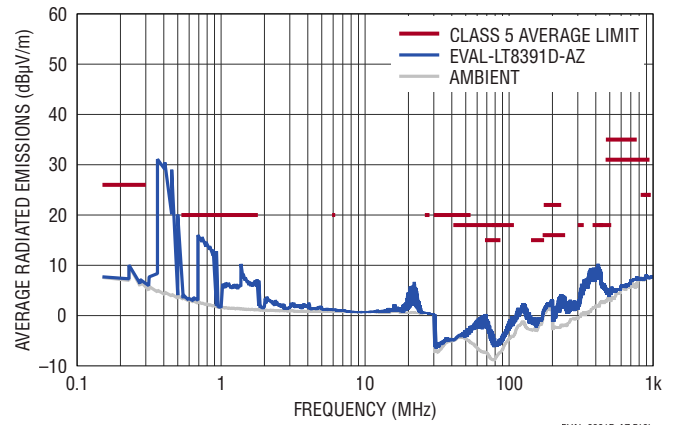


(b) CISPR25 Average Conducted EMI – Voltage Method

Figure 9. Conducted Emissions (Voltage Method): $V_{LED} = 30V$, $I_{LED} = 1.5A$, SSFM ON



(a) CISPR25 Peak Radiated EMI



(b) CISPR25 Average Radiated EMI

Figure 10. Radiated Emissions: $V_{LED} = 30V$, $I_{LED} = 1.5A$, SSFM ON

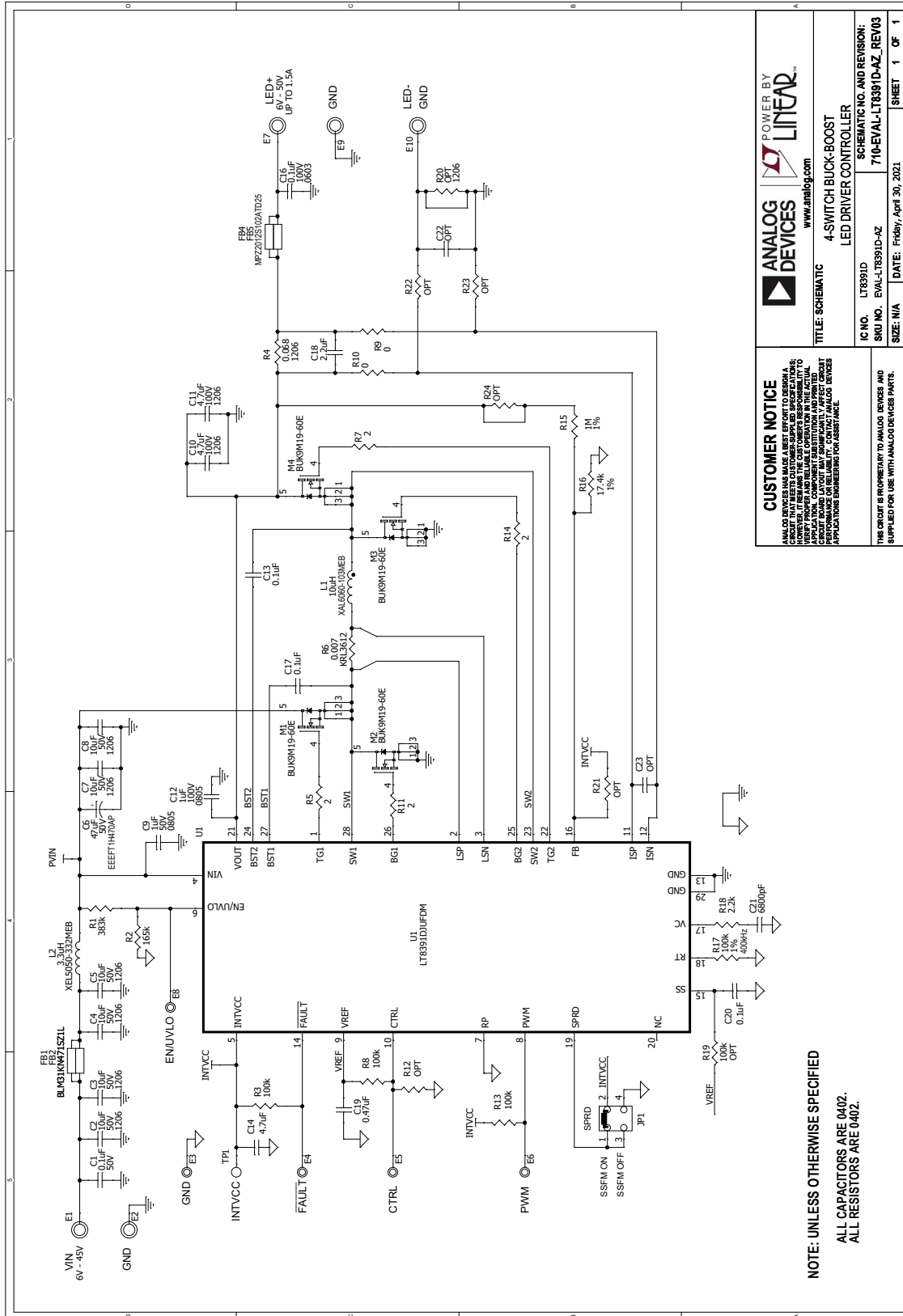
DEMO MANUAL

EVAL-LT8391D-AZ

PARTS LIST

ITEM	QTY	REFERENCE	PART DESCRIPTION	MANUFACTURER/PART NUMBER
Required Electrical Components				
1	2	C7, C8	CAP, 10 μ F, X5R, 50V, 10%, 1206, AEC-Q200	MURATA, GRT31CR61H106KE01L
2	1	C9	CAP, 1 μ F, X7R, 50V, 10%, 0805, AEC-Q200	MURATA, GCM21BR71H105KA03L
3	2	C10, C11	CAP, 4.7 μ F, X7S, 100V, 20%, 1206	MURATA, GRM31CC72A475ME11L
4	1	C12	CAP, 1 μ F, X7S, 100V, 10%, 0805, AEC-Q200	MURATA, GCM21BC72A105KE36L
5	3	C13, C17, C20	CAP, 0.1 μ F, X7R, 16V, 10%, 0402, AEC-Q200	MURATA, GCM155R71C104KA55D
6	1	C14	CAP, 4.7 μ F, X5R, 6.3V, 20%, 0402, AEC-Q200	TAIYO YUDEN, JMK105BBJ475MVHF
7	1	C18	CAP, 2.2 μ F, X5R, 6.3V, 20%, 0402, AEC-Q200	TAIYO YUDEN, JMK105BJ225MVHF
8	1	C19	CAP, 0.47 μ F, X7R, 6.3V, 10%, 0402, AEC-Q200	TAIYO YUDEN, JMK105B7474KVHF
9	1	C21	CAP, 6800pF, X7R, 50V, 10%, 0402, AEC-Q200	MURATA, GCM155R71H682KA55D
10	1	L1	IND., 10 μ H, SHIELDED PWR, 20%, 7A, 29.82m Ω , 6.56mm \times 6.36mm, AEC-Q200	COILCRAFT, XAL6060-103MEB
11	4	M1-M4	XSTR., MOSFET, N-CH, 60V, 38A, LFPAK33, AEC-Q101	NEXPERIA, BUK9M19-60EX
12	1	R1	RES., 383k, 1%, 1/16W, 0402, AEC-Q200	VISHAY, CRCW0402383KFKED
13	1	R2	RES., 165k, 1%, 1/16W, 0402, AEC-Q200	VISHAY, CRCW0402165KFKED
14	2	R3, R17	RES., 100k, 1%, 1/16W, 0402, AEC-Q200	VISHAY, CRCW0402100KFKED
15	1	R4	RES., 0.068 Ω , 1%, 3/4W, 1206, SHORT SIDE TERM, AEC-Q200	SUSUMU, KRL1632E-M-R068-F-T5
16	4	R5, R7, R11, R14	RES., 2 Ω , 1%, 1/16W, 0402, AEC-Q200	VISHAY, CRCW04022R00FKED
17	1	R6	RES., 0.007 Ω , 1%, 1.5W, 1206, LONG SIDE TERM, METAL, SENSE, AEC-Q200	SUSUMU, KRL3216E-M-R007-F-T1
18	2	R8, R13	RES., 100k, 5%, 1/16W, 0402, AEC-Q200	VISHAY, CRCW0402100KJNED
19	2	R9, R10	RES., 0 Ω , 1/10W, 0402, AEC-Q200	PANASONIC, ERJ2GE0R00X
20	1	R15	RES., 1M, 1%, 1/16W, 0402, AEC-Q200	VISHAY, CRCW04021M00FKED
21	1	R16	RES., 17.4k, 1%, 1/16W, 0402, AEC-Q200	VISHAY, CRCW040217K4FKED
22	1	R18	RES., 2.2k, 1%, 1/10W, 0402, AEC-Q200	PANASONIC, ERJ2RKF2201X
23	1	R20	RES., 0 Ω , 1/4W, 1206, AEC-Q200	VISHAY, CRCW12060000Z0EA
24	1	U1	IC, 4-SWITCH BUCK-BOOST CTRLR, QFN-28, WETTABLE	ANALOG DEVICES, LT8391DJUFDM#WPBF
Optional EMI Filter Components				
25	1	C1	CAP, 0.1 μ F, X7R, 50V, 10%, 0402, AEC-Q200	MURATA, GCM155R71H104KE02D
26	4	C2-C5	CAP, 10 μ F, X5R, 50V, 10%, 1206, AEC-Q200	MURATA, GRT31CR61H106KE01L
27	1	C6	CAP, 47 μ F, ALUM ELECT, 50V, 20%, 6.3mm \times 5.8mm SMD, RADIAL, AEC-Q200	PANASONIC, EEEFT1H470AP
29	1	C16	CAP, 0.1 μ F, X7R, 100V, 10%, 0805, AEC-Q200	MURATA, GCM21BR72A104KA37L
30	2	FB1, FB2	IND., 470 Ω AT 100MHz, FERRITE BEAD, 25%, 4A, 20m Ω , 1206, AEC-Q200	MURATA, BLM31KN471SZ1L
31	2	FB4, FB5	IND., 1k AT 100MHz, FERRITE BEAD, 25%, 1.5A, 150m Ω , 0805, AEC-Q200	TDK, MPZ2012S102ATD25
32	1	L2	IND., 3.3 μ H, SHIELDED, 20%, 10.6A, 14.6m Ω , 5.48mm \times 5.28mm, AEC-Q200	COILCRAFT, XEL5050-332MEB
Additional Electrical Components				
33	2	C22, C23	CAP, OPTION, 0402	
34	6	R12, R19, R21-R24	RES., OPTION, 0402	
Hardware: For Demo Board Only				
35	5	E1, E2, E7, E9, E10	TEST POINT, TURRET, 0.094" MTG. HOLE, PCB 0.062" THK	MILL-MAX, 2501-2-00-80-00-00-07-0
36	5	E3-E6, E8	TEST POINT, TURRET, 0.064" MTG. HOLE, PCB 0.062" THK	MILL-MAX, 2308-2-00-80-00-00-07-0
37	1	JP1	CONN., HDR, MALE, 2 \times 2, 2mm, VERT, STR, THT	WURTH ELEKTRONIK, 62000421121
38	1	XJP1	CONN., SHUNT, FEMALE, 2 POS, 2mm	WURTH ELEKTRONIK, 60800213421

SCHEMATIC DIAGRAM



CUSTOMER NOTICE
 ANALOG DEVICES AND ITS REPRESENTATIVES MAKE NO WARRANTY, REPRESENTATION OR GUARANTEE, EXPRESS OR IMPLIED, REGARDING THE PERFORMANCE OF THIS PRODUCT IN ANY APPLICATION. THE USER SHALL BE RESPONSIBLE FOR THE PROPER DESIGN AND APPLICATION OF THIS PRODUCT. THE USER SHALL BE RESPONSIBLE FOR THE PROPER DESIGN AND APPLICATION OF THIS PRODUCT. THE USER SHALL BE RESPONSIBLE FOR THE PROPER DESIGN AND APPLICATION OF THIS PRODUCT.

THE CIRCUIT IS PROPRIETARY TO ANALOG DEVICES AND SUPPLIED FOR USE WITH ANALOG DEVICES PARTS.

ANALOG DEVICES POWER BY **LINEAR**
 www.analog.com

TITLE: SCHEMATIC
4-SWITCH BUCK-BOOST LED DRIVER CONTROLLER

IC NO.: LT8391D
SCHEMATIC NO. AND REVISION: 710-EVAL-LT8391D-AZ_REV03

SKU NO.: EVAL-LT8391D-AZ
DATE: Friday, April 30, 2021

SIZE: N/A
SHEET: 1 OF 1

**NOTE: UNLESS OTHERWISE SPECIFIED
 ALL CAPACITORS ARE 0402.
 ALL RESISTORS ARE 0402.**





ESD Caution

ESD (electrostatic discharge) sensitive device. Charged devices and circuit boards can discharge without detection. Although this product features patented or proprietary protection circuitry, damage may occur on devices subjected to high energy ESD. Therefore, proper ESD precautions should be taken to avoid performance degradation or loss of functionality.

Legal Terms and Conditions

By using the evaluation board discussed herein (together with any tools, components documentation or support materials, the "Evaluation Board"), you are agreeing to be bound by the terms and conditions set forth below ("Agreement") unless you have purchased the Evaluation Board, in which case the Analog Devices Standard Terms and Conditions of Sale shall govern. Do not use the Evaluation Board until you have read and agreed to the Agreement. Your use of the Evaluation Board shall signify your acceptance of the Agreement. This Agreement is made by and between you ("Customer") and Analog Devices, Inc. ("ADI"), with its principal place of business at One Technology Way, Norwood, MA 02062, USA. Subject to the terms and conditions of the Agreement, ADI hereby grants to Customer a free, limited, personal, temporary, non-exclusive, non-sublicensable, non-transferable license to use the Evaluation Board FOR EVALUATION PURPOSES ONLY. Customer understands and agrees that the Evaluation Board is provided for the sole and exclusive purpose referenced above, and agrees not to use the Evaluation Board for any other purpose. Furthermore, the license granted is expressly made subject to the following additional limitations: Customer shall not (i) rent, lease, display, sell, transfer, assign, sublicense, or distribute the Evaluation Board; and (ii) permit any Third Party to access the Evaluation Board. As used herein, the term "Third Party" includes any entity other than ADI, Customer, their employees, affiliates and in-house consultants. The Evaluation Board is NOT sold to Customer; all rights not expressly granted herein, including ownership of the Evaluation Board, are reserved by ADI. CONFIDENTIALITY. This Agreement and the Evaluation Board shall all be considered the confidential and proprietary information of ADI. Customer may not disclose or transfer any portion of the Evaluation Board to any other party for any reason. Upon discontinuation of use of the Evaluation Board or termination of this Agreement, Customer agrees to promptly return the Evaluation Board to ADI. ADDITIONAL RESTRICTIONS. Customer may not disassemble, decompile or reverse engineer chips on the Evaluation Board. Customer shall inform ADI of any occurred damages or any modifications or alterations it makes to the Evaluation Board, including but not limited to soldering or any other activity that affects the material content of the Evaluation Board. Modifications to the Evaluation Board must comply with applicable law, including but not limited to the RoHS Directive. TERMINATION. ADI may terminate this Agreement at any time upon giving written notice to Customer. Customer agrees to return to ADI the Evaluation Board at that time. LIMITATION OF LIABILITY. THE EVALUATION BOARD PROVIDED HEREUNDER IS PROVIDED "AS IS" AND ADI MAKES NO WARRANTIES OR REPRESENTATIONS OF ANY KIND WITH RESPECT TO IT. ADI SPECIFICALLY DISCLAIMS ANY REPRESENTATIONS, ENDORSEMENTS, GUARANTEES, OR WARRANTIES, EXPRESS OR IMPLIED, RELATED TO THE EVALUATION BOARD INCLUDING, BUT NOT LIMITED TO, THE IMPLIED WARRANTY OF MERCHANTABILITY, TITLE, FITNESS FOR A PARTICULAR PURPOSE OR NON-INFRINGEMENT OF INTELLECTUAL PROPERTY RIGHTS. IN NO EVENT WILL ADI AND ITS LICENSORS BE LIABLE FOR ANY INCIDENTAL, SPECIAL, INDIRECT, OR CONSEQUENTIAL DAMAGES RESULTING FROM CUSTOMER'S POSSESSION OR USE OF THE EVALUATION BOARD, INCLUDING BUT NOT LIMITED TO LOST PROFITS, DELAY COSTS, LABOR COSTS OR LOSS OF GOODWILL. ADI'S TOTAL LIABILITY FROM ANY AND ALL CAUSES SHALL BE LIMITED TO THE AMOUNT OF ONE HUNDRED US DOLLARS (\$100.00). EXPORT. Customer agrees that it will not directly or indirectly export the Evaluation Board to another country, and that it will comply with all applicable United States federal laws and regulations relating to exports. GOVERNING LAW. This Agreement shall be governed by and construed in accordance with the substantive laws of the Commonwealth of Massachusetts (excluding conflict of law rules). Any legal action regarding this Agreement will be heard in the state or federal courts having jurisdiction in Suffolk County, Massachusetts, and Customer hereby submits to the personal jurisdiction and venue of such courts. The United Nations Convention on Contracts for the International Sale of Goods shall not apply to this Agreement and is expressly disclaimed.