

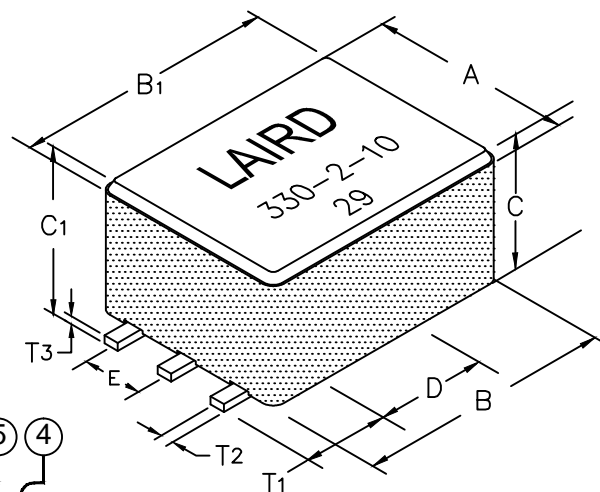
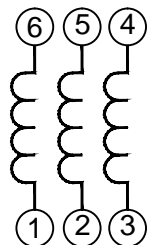
29F0330-2SR-10

PHYSICAL DIMENSIONS:

A	8.33 [.328]	± 0.13 [.005]
B	10.87 [.428]	± 0.15 [.006]
B1	13.46 [.530]	MAX
C	6.35 [.250]	± 0.10 [.004]
C1	7.11 [.280]	MAX
D	7.62 [.300]	± 0.13 [.005]
E	2.54 [.100]	± 0.13 [.005]

WIRE DIMENSIONS:

T ₁	2.64 [.104]	± 0.25 [.010]
T ₂	0.64 [.025]	TYP
T ₃	0.38 [.015]	TYP

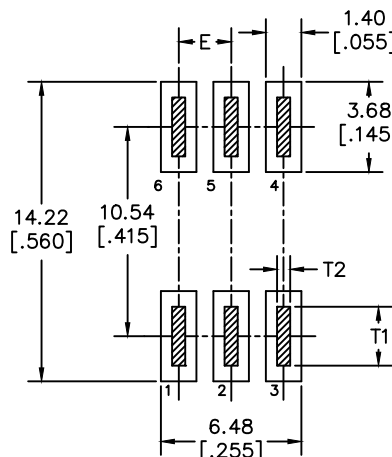


ELECTRICAL CHARACTERISTICS:			
Z @ 100MHz (Ω)	DCR (Ω)	Rated Current	
Nominal	200		
Minimum	150		
Maximum	250	0.01	9,000 mA

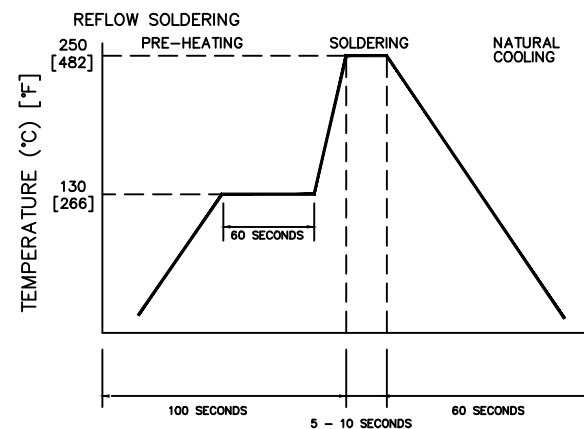
NOTES: UNLESS OTHERWISE SPECIFIED

1. TAPED AND REELED per CURRENT EIA SPECIFICATION, 13" REELS, 450 PCS/REEL.
2. COMPONENTS SHOULD BE ADEQUATELY PREHEATED BEFORE SOLDERING.
3. REF. CARRIER TAPE SPEC.# CART330-23.
4. TERMINATION FINISH IS 100% TIN.
5. THIS PART HAS NO PIN POLARITY.
6. OPERATION TEMPERATURE (INCLUDING SELF-HEATING): -40 ~ +125°C.

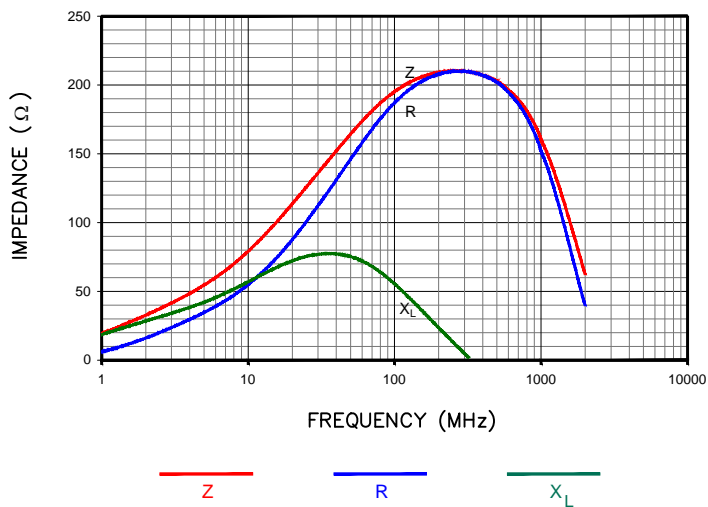
LAND PATTERNS FOR REFLOW SOLDERING



RECOMMENDED SOLDERING CONDITIONS



|Z|, R, AND X vs. FREQUENCY



DIMENSIONS ARE IN mm [INCHES]

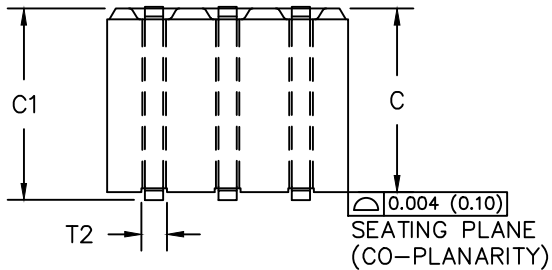
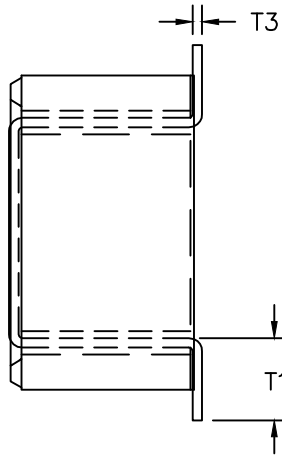
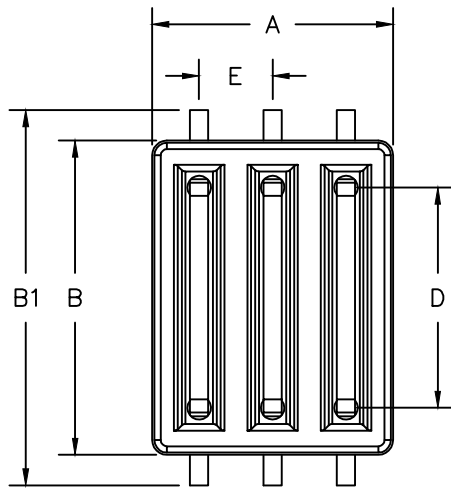
G	ADD NOTE 6	08/30/12	QIU
F	CHANGE THE C1 DIMENSION	11/03/09	JUN
E	COR LAND PATTERN DIMS FROM 7.62MM	03/31/09	JRK
D	UPDATE COMPANY LOGO ADD EQUIV. CIRCUIT CHG KAPTON LABEL	10/27/08	JRK
C	UPDATE COMPANY LOGO	05/03/07	JRK
B	CORRECT REV BLOCK mm [INCHES]	10/20/06	JRK
A	ORIGINAL DRAFT	04/30/04	JRK
REV	DESCRIPTION	DATE	INT

This print is the property of Laird Tech. and is loaned in confidence subject to return upon request and with the understanding that no copies shall be made without the written consent of Laird Tech. All rights to design or invention are reserved.

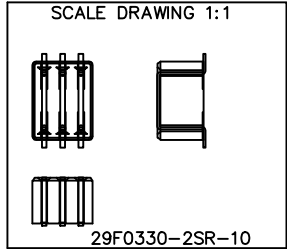


PROJECT/PART NUMBER: 29F0330-2SR-10	REV G	PART TYPE: FERRITE ASSEMBLY	DRWN BY: JRK
DATE: 04/30/04	SCALE: NTS	SHEET: 1 of 2	
CAD #: 29F0330-2SR-10-G-1	TOOL #: H0331		





LAIRD
330-2-10
29



ELECTRICAL TESTING

TEST:	GROSS	GROSS
	Z	Z
# TURNS	1	1
AWG	22	22
FREQUENCY	25 MHz	100 MHz
NOMINAL	120 Ω	200 Ω
MINIMUM	- Ω	150 Ω
MAXIMUM	- Ω	250 Ω
WEIGHT/1000	2.63 kgs.	5.8 lbs.

DIMENSIONS:

A	8.33 [.328]	± 0.13 [.005]
B	10.87 [.428]	± 0.15 [.006]
B1	13.46 [.530]	± MAX
C	6.35 [.250]	± 0.10 [.004]
C1	7.11 [.280]	± MAX
D	7.62 [.300]	± 0.13 [.005]
E	2.54 [.100]	± 0.08 [.003]

WIRE DIMENSIONS:

T1	2.64 [.104]	± 0.25 [.010]
T2	0.64 [.025]	± TYP
T3	0.38 [.015]	± TYP



- NOTES: UNLESS OTHERWISE SPECIFIED
1. WIRE: REFERENCE STEWARD WIRE PURCHASE SPEC. W0430-*1.
 2. IMPEDANCE VALUES ARE GROSS, MEASURED USING W0430 WIRE PLACED AGAINST END OF SLOT w/ NO D.C. BIAS.
 3. REFERENCE STEWARD CORE P/N 29H0331-*00.
 4. NO MORE THAN 0.10 [.004] DIFFERENCE FROM THE LONGEST TO THE SHORTEST CONDUCTOR ON ANY ONE SIDE.
 5. TERMINATION FINISH IS 100% TIN.
 6. THIS PART HAS NO PIN POLARITY.

DIMENSIONS ARE IN mm [INCHES]				This print is the property of Laird Tech. and is loaned in confidence subject to return upon request and with the understanding that no copies shall be made without the written consent of Laird Tech. All rights to design or invention are reserved.			
G	ADD NOTE 6	08/30/12	QIU	PROJECT/PART NUMBER: 29F0330-2SR-10	REV G	PART TYPE: FERRITE ASSEMBLY	DRAWN BY: JRK
F	CHANGE THE C1 DIMENSION	11/03/09	JUN				
E	COR LAND PATTERN DIMS FROM 7.62MM	03/31/09	JRK				
D	UPDATE COMPANY LOGO ADD EQUIV. CIRCUIT CHG KAPTON LABEL	10/27/08	JRK				
C	UPDATE COMPANY LOGO	05/03/07	JRK				
B	CORRECT REV BLOCK mm [INCHES]	10/20/06	JRK	DATE: 04/30/04	SCALE: NTS	SHEET: 2 of 2	
A	ORIGINAL DRAFT	04/30/04	JRK	CAD # 29F0330-2SR-10-G-2	TOOL # H0331		
REV	DESCRIPTION	DATE	INT				