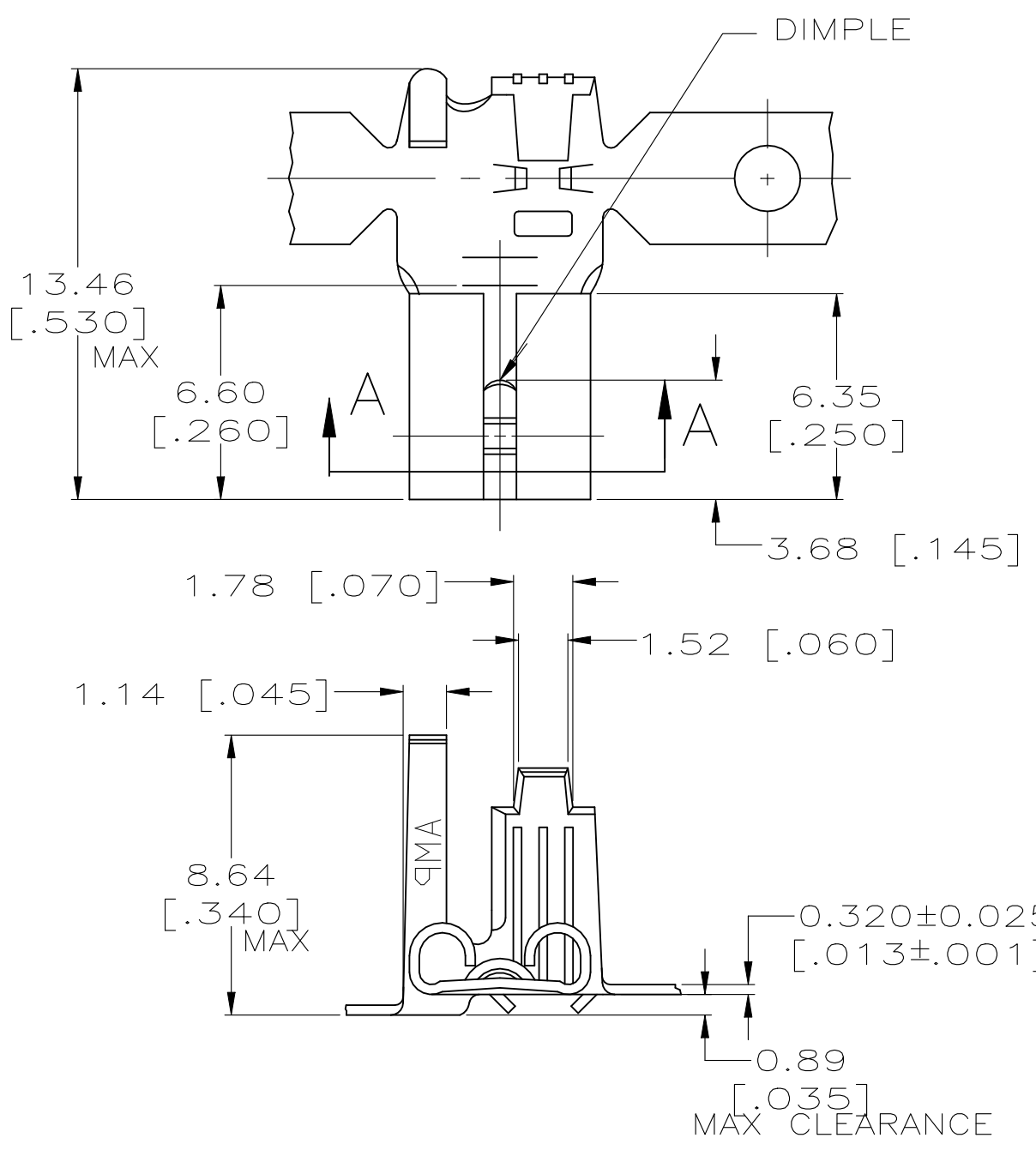


REVISIONS					
P	LTR	DESCRIPTION	DATE	DWN	APVD
	G1	REVISED PER ECR-19-017980	09DEC2021	SS	EW

- 1 CONTINUOUS STRIP ON REELS.
- 2 ACCEPTS [#20-#16] AWG WIRE.
- 3 INSULATION RANGE TO BE 2.79-4.32 [.110-.170] DIA.
- 4 MATING TAB THICKNESS TO BE 0.51±0.025 [.020±.001]
- 5 FEED TO BE 16.38±0.13 [.645±.005]
- △ 6 PREPRODUCTION - FASR REQUIRED



OBSOLETE	TIN	H04 PHOS BRONZE	△ 6	42618-3
	TIN	BRASS		42618-2
	-	BRASS		42618-1
	FINISH	MATERIAL		PART NO.

THIS DRAWING IS A CONTROLLED DOCUMENT.		DWN	JR RUTH	1/25/96	<b>STE</b> TE Connectivity		
DIMENSIONS: MM [ INCHES ]		CHK	P FORTNEY	1/25/96			
TOLERANCES UNLESS OTHERWISE SPECIFIED:		APVD	P DESANTIS	1/25/96	NAME		
0 PLC ± -		PRODUCT SPEC		RECEPTACLE, FASTON, FLAG, MOLDABLE, 4.75 [.187] SERIES			
1 PLC ± -		APPLICATION SPEC		-			
2 PLC ± 0.38 [.015]		SIZE	A3	CAGE CODE	00779	DRAWING NO	C-42618
3 PLC ± -		WEIGHT		0.000000		RESTRICTED TO	
4 PLC ± -		CUSTOMER DRAWING					
ANGLES ± -		SCALE		5:1		SHEET 1 OF 1	
FINISH		SEE TABLE		REV		G1	
MATERIAL		SEE TABLE					