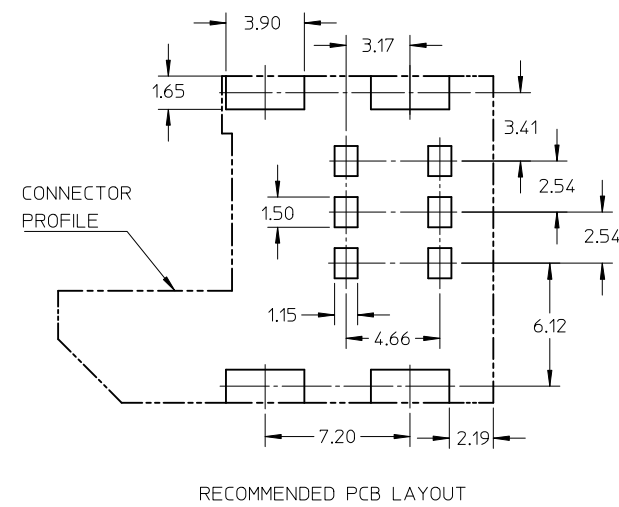
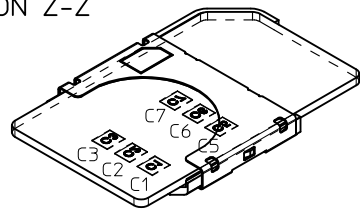


SECTION Z-Z

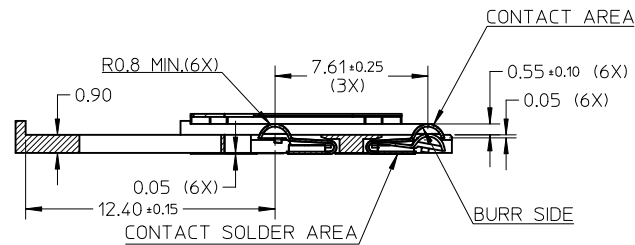
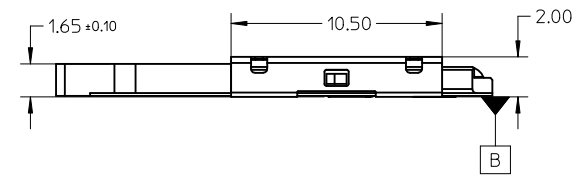
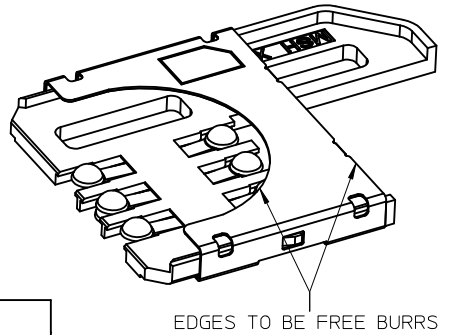
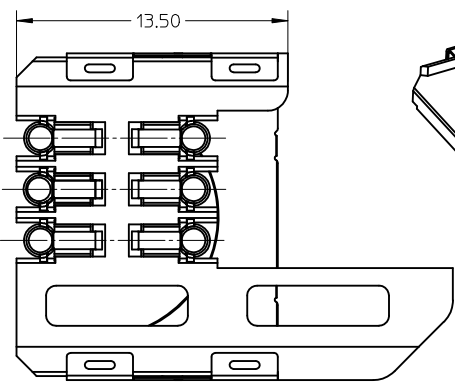
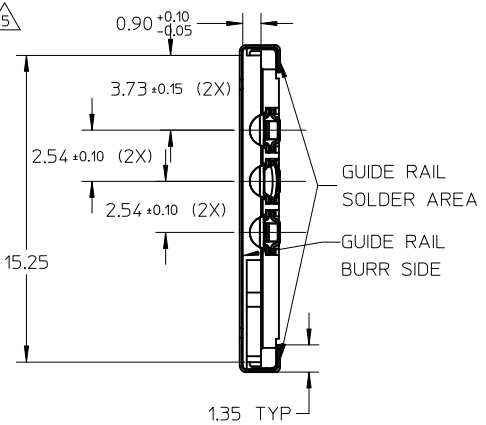
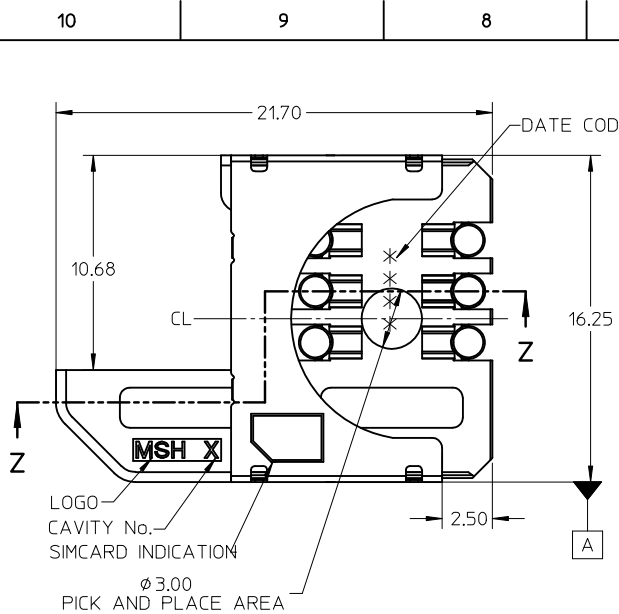


NOTE:

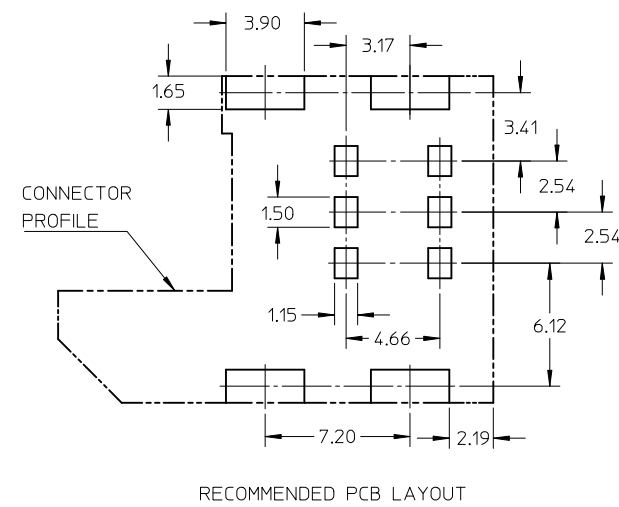
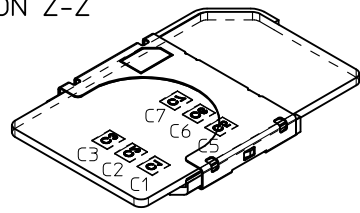
- 1.MATERIAL:
HOUSING:LCP,45% GLASS-FILLED,UL 94V-0,COLOR IS BLACK.
TERMINAL:BeCu C17200(290) TM06,THICKNESS IS 0.12mm.
SHELL:STAINLESS STEEL,THICKNESS IS 0.15mm.
- 2.FINISH:
TERMINAL:
CONTACT AREA:SELECTIVE 0.75 TO 1.25 MICRON GOLD .
SOLDER TAIL:0.05 TO 0.125 MICRON GOLD FLASH.
UNDERPLATING ALL OVER 1.25 TO 3.75 MICRON NICKEL.
- GUIDE RAIL:
SELECTIVE 0.05 TO 0.125 MICRON GOLD FLASH OVER
1.25 TO 3.75 MICRON NICKEL ON SOLDER TAIL AREA.
- 3.COPLANARITY:0.1MM MAX. AMONG THESE TERMINAL SOLDER TAILS.
- 4.PRODUCT SPECIFICATION:PS-47468-001.
- △,DATE CODE(4 DIGITS)

***	***	***	***	EXAMPLE
				2006/01/15 → 6015
				2006/02/10 → 6041
				2007/03/10 → 7069
- 6.THE PART 474680001 COMPLIANT TO RoHS DIRECTIVE 2002/95/EC AND ELV 2000/53/EC.

ADD VIEW EC NO: S2011-1013 DRW:KHLIM CHK:DFCS00 APPR:SKTOH REV: B1	DESCRIPTION 2011/06/01 2011/06/13 2011/07/07	QUALITY SYMBOLS $F_A=0$ $F_B=0$ $F_C=0$	GENERAL TOLERANCES (UNLESS SPECIFIED)		DIMENSION STYLE	SCALE	DESIGN UNITS	THIRD ANGLE PROJECTION				
			mm	INCH	MM ONLY		NTS	METRIC				
			4 PLACES ± --- ± ---	3 PLACES ± --- ± ---	2 PLACES ± 0.13 ± ---	1 PLACE ± --- ± ---	DRAWN BY	DATE	TITLE			
			ANGULAR ± 1 °				XIXU	2006/04/26	LOW PROFILE 2.0 SIM CONN WITH GUIDE RAIL			
DRAFT WHERE APPLICABLE MUST REMAIN WITHIN DIMENSIONS				APPROVED BY	DATE	MOLEX INCORPORATED						
				JNCHEN	2006/04/26	DOCUMENT NO.		SHEET NO.				
				MATERIAL NO.		47468-0001		SD-47468-001				
				SIZE		A3		1 OF 1				
THIS DRAWING CONTAINS INFORMATION THAT IS PROPRIETARY TO MOLEX INCORPORATED AND SHOULD NOT BE USED WITHOUT WRITTEN PERMISSION												



SECTION Z-Z



NOTE:

- 1.MATERIAL:
HOUSING:LCP,45% GLASS-FILLED,UL 94V-0,COLOR IS BLACK.
TERMINAL:BeCu C17200(290) TM06,THICKNESS IS 0.12mm.
SHELL:STAINLESS STEEL,THICKNESS IS 0.15mm.
- 2.FINISH:
TERMINAL:
CONTACT AREA:SELECTIVE 0.75 TO 1.25 MICRON GOLD .
SOLDER TAIL:0.05 TO 0.125 MICRON GOLD FLASH.
UNDERPLATING ALL OVER 1.25 TO 3.75 MICRON NICKEL.
GUIDE RAIL:
SELECTIVE 0.05 TO 0.125 MICRON GOLD FLASH OVER
1.25 TO 3.75 MICRON NICKEL ON SOLDER TAIL AREA.
- 3.COPLANARITY:0.1MM MAX. AMONG THESE TERMINAL SOLDER TAILS.
- 4.PRODUCT SPECIFICATION:PS-47468-001.
- △,DATE CODE(4 DIGITS)

***	***	***	***	EXAMPLE
				2006/01/15 → 6015
				2006/02/10 → 6041
				2007/03/10 → 7069
- 6.THE PART 474680001 COMPLIANT TO RoHS DIRECTIVE 2002/95/EC AND ELV 2000/53/EC.

ADD VIEW EC NO: S2011-1013 DRW:KHLIM CHK:DFCS00 APPR:SKTOH REV: B1	DESCRIPTION 2011/06/01 2011/06/13 2011/07/07	QUALITY SYMBOLS $F_A=0$ $F_B=0$ $F_C=0$	GENERAL TOLERANCES (UNLESS SPECIFIED)		DIMENSION STYLE MM ONLY	SCALE NTS	DESIGN UNITS METRIC	THIRD ANGLE PROJECTION			
			mm	INCH	DRAWN BY BWAN	DATE 2006/04/26	TITLE LOW PROFILE 2.0 SIM CONN WITH GUIDE RAIL MOLEX INCORPORATED				
			4 PLACES ± --- ± ---	3 PLACES ± --- ± ---	CHECKED BY XIXU	DATE 2006/04/26					
			2 PLACES ± 0.13 ± ---	1 PLACE ± --- ± ---	APPROVED BY JNCHEN	DATE 2006/04/26					
ANGULAR ± 1 °			MATERIAL NO. 47468-0001	DOCUMENT NO. SD-47468-001	SHEET NO. 1 OF 1						
DRAFT WHERE APPLICABLE MUST REMAIN WITHIN DIMENSIONS			SIZE A3	THIS DRAWING CONTAINS INFORMATION THAT IS PROPRIETARY TO MOLEX INCORPORATED AND SHOULD NOT BE USED WITHOUT WRITTEN PERMISSION							