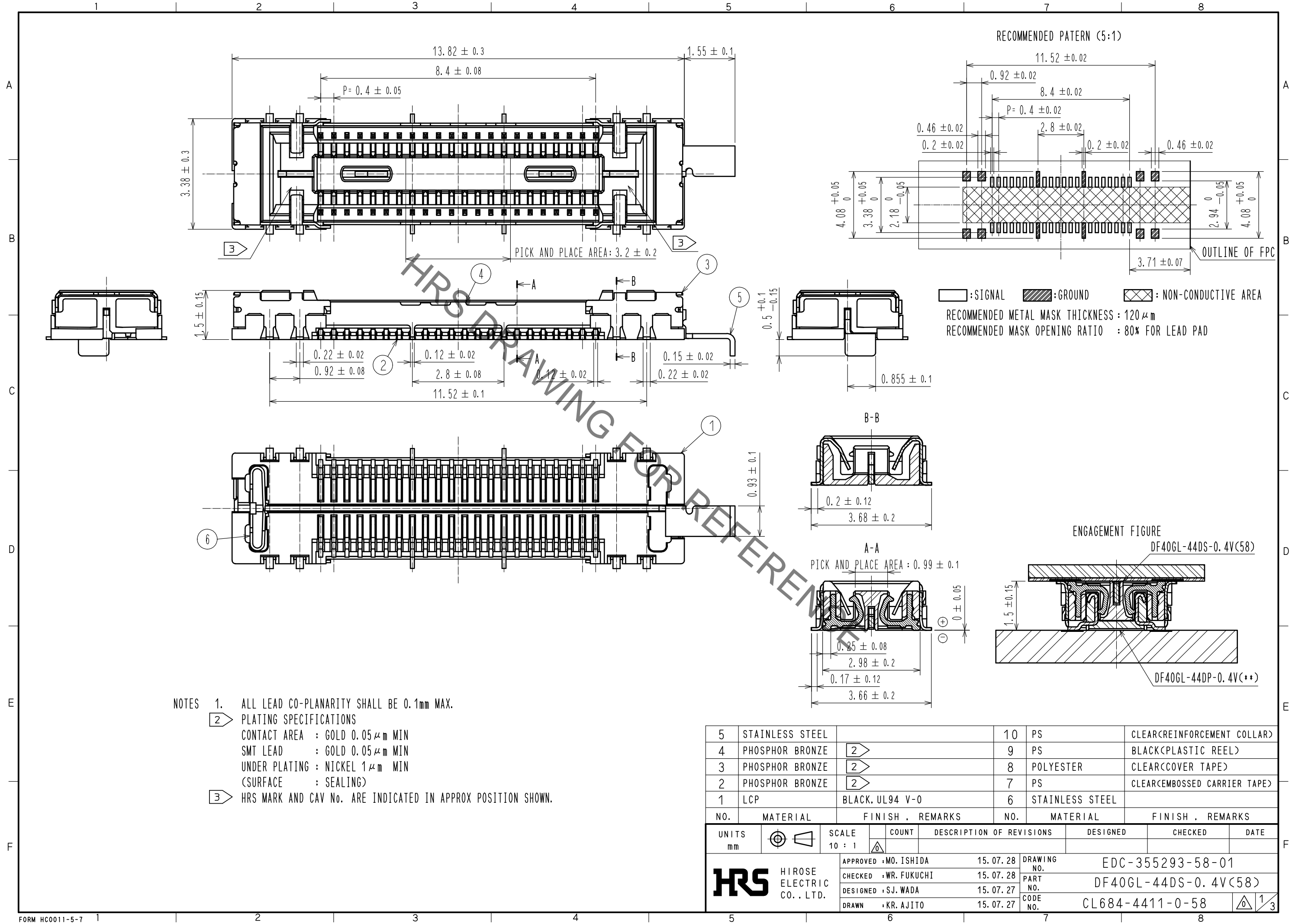
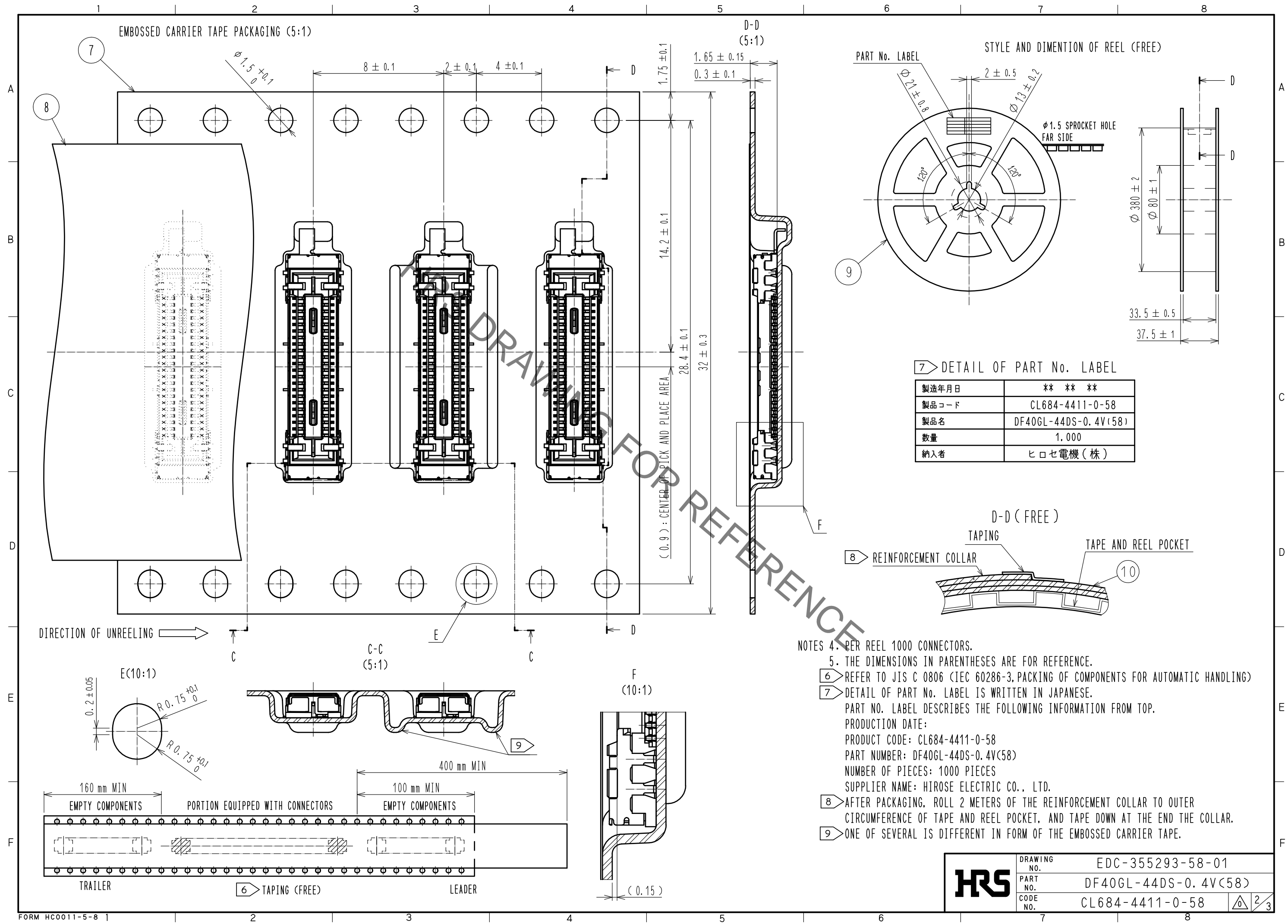


May.1.2023 Copyright 2023 HIROSE ELECTRIC CO., LTD. All Rights Reserved.
In case of consideration for using Automotive equipment / device which demand high reliability, kindly contact our sales window correspondents.



5	STAINLESS STEEL		10	PS	CLEAR(REINFORCEMENT COLLAR)			
4	PHOSPHOR BRONZE	2	9	PS	BLACK(PLASTIC REEL)			
3	PHOSPHOR BRONZE	2	8	POLYESTER	CLEAR(COVER TAPE)			
2	PHOSPHOR BRONZE	2	7	PS	CLEAR(EMBOSSED CARRIER TAPE)			
1	LCP	BLACK, UL94 V-0	6	STAINLESS STEEL				
NO.	MATERIAL	FINISH . REMARKS	NO.	MATERIAL	FINISH . REMARKS			
UNITS	mm	SCALE	10 : 1	COUNT	DESCRIPTION OF REVISIONS	DESIGNED	CHECKED	DATE
HRS HIROSE ELECTRIC CO., LTD.		APPROVED : MO. ISHIDA	15.07.28	DRAWING NO. EDC-355293-58-01				
		CHECKED : WR. FUKUCHI	15.07.28	PART NO. DF40GL-44DS-0.4V(58)				
		DESIGNED : SJ. WADA	15.07.27	CODE NO. CL684-4411-0-58				
		DRAWN : KR. AJITO	15.07.27					

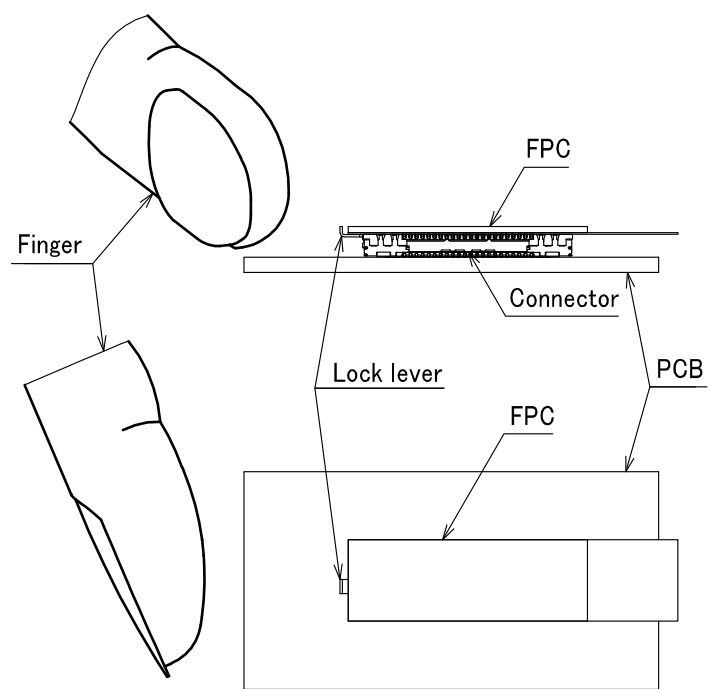
May.1.2023 Copyright 2023 HIROSE ELECTRIC CO., LTD. All Rights Reserved.
 In case of consideration for using Automotive equipment / device which demand high reliability, kindly contact our sales window correspondents.



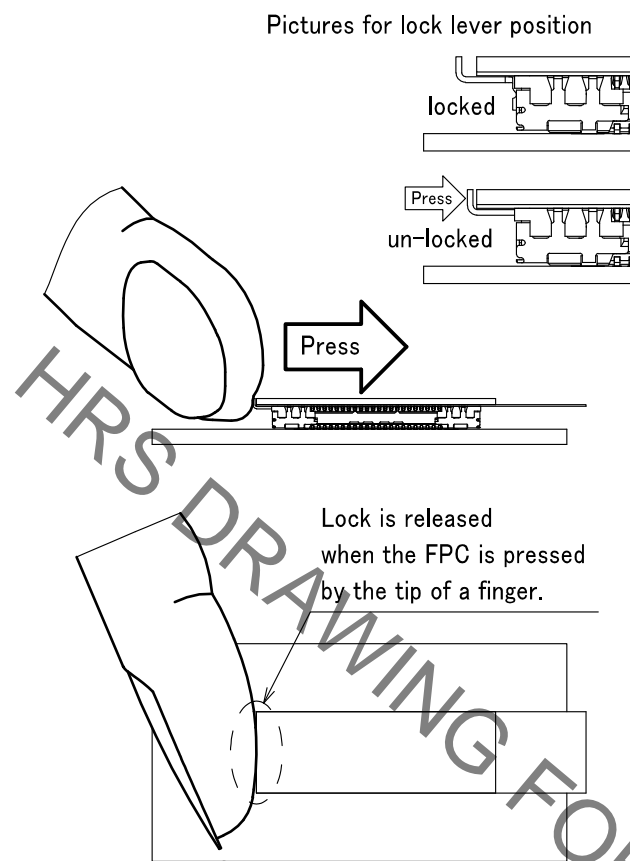
HRS	DRAWING NO.	EDC-355293-58-01
	PART NO.	DF40GL-44DS-0.4V(58)
	CODE NO.	CL684-4411-0-58
		2/3

May.1.2023 Copyright 2023 HIROSE ELECTRIC CO., LTD. All Rights Reserved.
In case of consideration for using Automotive equipment / device which demand high reliability, kindly contact our sales window correspondents.

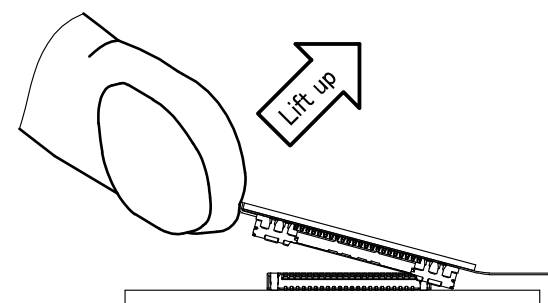
Handling Instruction



STEP 1 Press the lever to release the lock

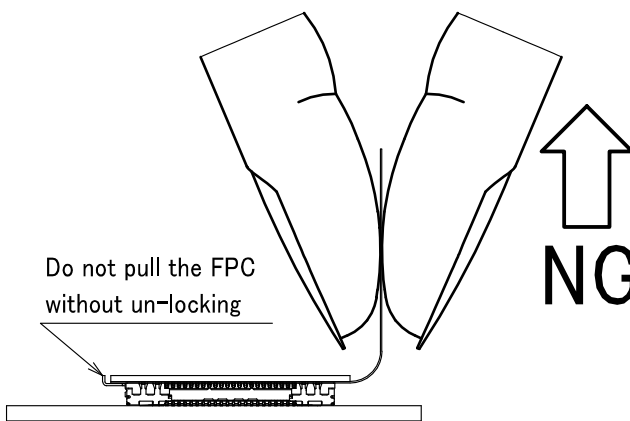
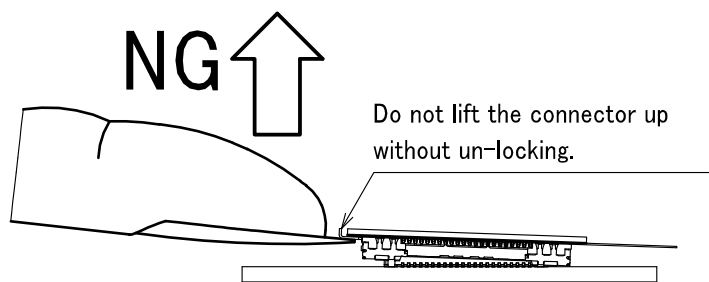


STEP 2 While maintaining the unlocked position, lift the FPC up in the direction shown on illustration.

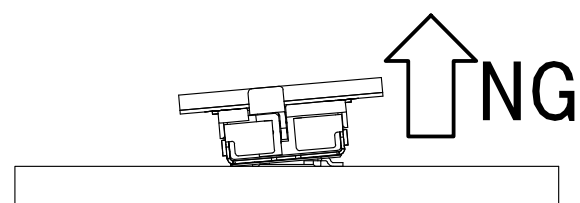


Precaution

Do not attempt to un-mate without un-locking since there is a risk for connector breakage when un-mated without releasing the lock.



Do not un-mate in the depth direction to avoid contact or housing damage even when the lock is released.



HRS	DRAWING NO.	EDC-355293-58-01
	PART NO.	DF40GL-44DS-0.4V(58)
	CODE NO.	CL684-4411-0-58
		3/3