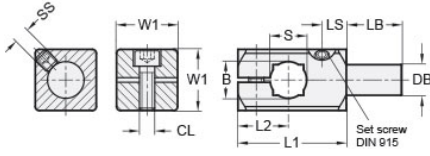




MT8/8-CC90S-AN


Ruland T-Connector Mini-Clamp With Stud, Thru Hole 8mm, Stud Diameter 8mm, Stud Length 16mm, Black Anodized Aluminum



Description

Ruland MT8/8-CC90S-AN is a 90 degree connector with stud with a thru hole for 8mm round tube, 8mm stud diameter, 16mm stud length, and 26.0mm body length. It is designed to fit on Ruland tubes and flange bolt bases that begin with MT8. MT8/8-CC90S-AN is aluminum with a black anodized finish and screws are 304 stainless steel for added corrosion resistance when compared to unplated types. This 90 degree connector clamp with stud is commonly used to support tubes for mounting sensors, screens, reflectors, plexiglass machine guards, and other industrial components. The thru hole allows designers flexibility to reposition the clamp or tube as needed. The stud allows for a more compact installation than other connectors which require the use of a second tube that is significantly longer than the stud. MT8-ALK-M4-16 adjustable clamping lever can be used in place of standard clamp hardware for rapid repositioning of the tube or connector without the need for tools. MT8/8-CC90S-AN is manufactured by Otto Ganter, inventoried by Ruland, and RoHS3 compliant.

Product Specifications

Thru Hole Diameter B	8 mm	Thru Hole Tolerance	+0.09/-0 mm
Bolt Length LB	16 mm	Bolt Diameter DB	8 mm
Body Length L1	26 mm	Edge To Center L2	13 mm
Screw To Edge LS	5.5 mm	Hole Depth T	8 mm
Width & Height W1	16 mm	Clamp Screw CL	M4
Set Screw SS	M4	Weight (lbs)	0.055100
Material Specification	Anodized Aluminum	Manufacturer	JW Winco/ Otto Ganter
UPC	634529232026	Country of Origin	Germany
Tariff Code	7609.00.0000	UNSPC	31162908
Note 1	Performance ratings are for guidance only. The user must determine suitability for a particular application.		
Prop 65	 WARNING This product can expose you to the chemical Nickel (metallic), known to the State of California to cause cancer. For more information go to www.P65Warnings.ca.gov .		