

Self-Adjusting Crimping Pliers

with side-loading mechanism for ferrules (end sleeves)

97
53

Narrow handle width and improved ergonomics

- > for crimping ferrules (end sleeves) according to DIN 46228 parts 1 + 4
- > self-adjustment to the size of ferrules (end sleeves) required
- > repetitive, high crimping quality due to integral lock (self-releasing mechanism)
- > crimping pressure has been set precisely (calibrated) in the factory
- > optimum transmission of force due to toggle lever for fatigue-reduced operation
- > high operation comfort due to hand shape and low weight
- > chrome vanadium electric steel in special quality; oil-hardened

97 53 04

Square compression for ferrules (end sleeves) up to 6 AWG; square compression for ideal contact surfaces in the clamp connection; particularly suitable for all twin ferrules (end sleeves) up to 2 x 6 mm² or 2 x AWG 8

97 53 14

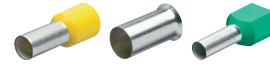
Expanded capacity of hexagonal crimping up to 1 AWG; hexagonal compression for confined connection dimensions; particularly suitable for all twin ferrules (end sleeves) up to 2 x 4 mm² or 2 x AWG 10



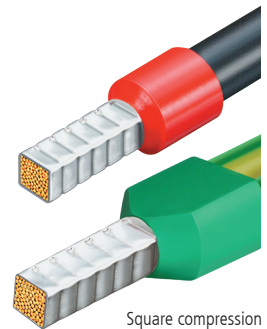
97 53 04



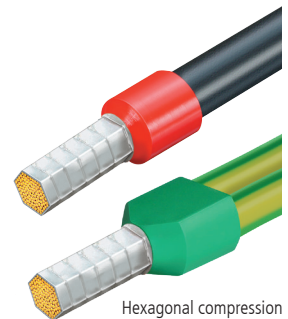
97 53 14



Crimping capacity can be switched over simply from 8 AWG (10 mm²) to 6 AWG (16 mm²)



Square compression



Hexagonal compression

The small crimping pliers for ferrules (end sleeves) with two major advantages for the user:

- > Automatic adjustment to the end sleeves, making work easier for the professional and offers reliable and fast crimping
- > Expanded range of applications

WARNING: This product can expose you to chemicals including Diisononyl Phthalate, which is known to the State of California to cause cancer. For more information go to www.P65Warnings.ca.gov

Product Number	Packaging	↔ Inch mm			Pliers	Handles	Applications	Capacity mm ²	AWG	Number of crimping positions	 lbs
97 53 04		7 1/4 180			burnished	multi-component grips	Ferrules (end sleeves)	0.08 - 10 and 16	28 - 8 and 6	1	0.94
97 53 14		7 1/4 180			burnished	multi-component grips	Ferrules (end sleeves)	0.08 - 10.0	28 - 8	1	0.90