

End plate, Width: 1.5 mm, Colour: Blue

**RAL:** Ähnlich 5005

### Business data

Article number	<u>27103.5</u>
Article name	PAP 2,5/2A BU
GTIN (EAN)	4044211224431
Packaging unit	20
Quantity unit	PC
Weight per piece (not including packaging)	1.62 g
Weight per piece (including packaging)	1.84 g
Unit of weight	G
Prio-Article	27103.6
Product description	End plate

---

### Technical data

---

#### Dimensions

Length	48.5 mm
Width	1.5 mm
Height	28.7 mm

#### Materials

Material	Polyamide 6.6
Flammability class UL 94	V-0
Working temperature, min.	-40 °C
Working temperature, max.	120 °C

#### Environmental Product Compliance

REACH Conform	yes
REACH Candidate Substance Note	No
RoHS Conform	yes

# Data sheet

27103.5 PAP 2,5/2A BU



---

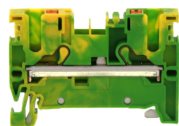
Media

---

## 27103.5 PAP 2,5/2A BU

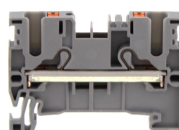
### Accessories

#### Terminal blocks



Protective earth terminal, Push-in connection, Mounting type: Mounting rail TS 35/7.5, Rated cross-section: 2.5 mm<sup>2</sup>, Width: 5.1 mm, Colour: Green-yellow

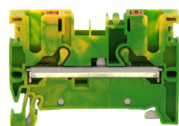
Article number	Article name	GTIN (EAN)	Packaging unit
<u>27007.2</u>	PSL 2,5/2A GNYE	4044211223809	50 ST



Feed-through terminal, Push-in connection, Mounting type: Mounting rail TS 35/7.5, Rated cross-section: 2.5 mm<sup>2</sup>, Width: 5.1 mm, Colour: Grey

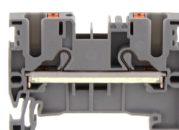
Article number	Article name	GTIN (EAN)	Packaging unit
<u>27006.6</u>	PRK 2,5/2A GR	4044211223793	50

#### ##INVERSE##CONTA-CONNECT



Protective earth terminal, Push-in connection, Mounting type: Mounting rail TS 35/7.5, Rated cross-section: 2.5 mm<sup>2</sup>, Width: 5.1 mm, Colour: Green-yellow

Article number	Article name	GTIN (EAN)	Packaging unit
<u>27007.2</u>	PSL 2,5/2A GNYE	4044211223809	50 ST



Feed-through terminal, Push-in connection, Mounting type: Mounting rail TS 35/7.5, Rated cross-section: 2.5 mm<sup>2</sup>, Width: 5.1 mm, Colour: Grey

Article number	Article name	GTIN (EAN)	Packaging unit
<u>27006.6</u>	PRK 2,5/2A GR	4044211223793	50