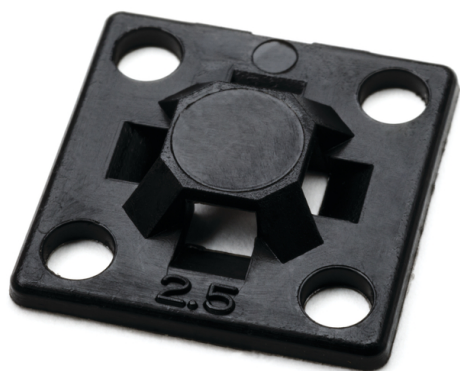


Specification Sheet

Part Number: MB2.50C2



Compact size fits most mounting applications.

Simple to install with a screw or rivet.

Single hole attachment with two-way entry for cable tie.

Screw Mount Cable Tie Base, 0.63" x .63", 0.10" Max Tie Width, 0.11" Hole Dia, PA66, Black, 100/pkg

Article Number 151-00285

Type MB2.5

Color Black (BK)

Quantity Per bag

Product Description These cable tie mounts are compact in size. They are designed for simple yet robust installation. They pair with a cable tie for mounting applications including telecom equipment, switchgear and control cabinets.

Short Description Screw Mount Cable Tie Base, 0.63" x .63", 0.10" Max Tie Width, 0.11" Hole Dia, PA66, Black, 100/pkg

Global Part Name MB2.5-PA66-BK

Length L (Imperial)	0.625
Length L (Metric)	15.9
Fixation Method	Screw Mounting and Rivet
Width W (Imperial)	0.625
Width W (Metric)	15.9
Cable Ties	T18
Height H (Imperial)	.13
Height H (Metric)	3.30
Cable Tie Width Max (Imperial)	0.1
Cable Tie Width Max (Metric)	2.54
Mounting Hole Diameter D (Imperial)	0.11
Mounting Hole Diameter D (Metric)	2.8 mm
Mounting Hole Diameter D Max (Metric)	2.8
Material	Polyamide 6.6 (PA66)

Material Shortcut	PA66
Flammability	UL 94 V-2
UV Resistant (Yes/No)	No
Operating Temperature	-40°F to +185°F (-40°C to +85°C)
Reach Compliant (Article 33)	No
ROHS Compliant	Yes
UL Recognized (US)	Yes
UL Recognized (US and Canada)	Yes
Package Quantity (Imperial)	100
Package Quantity (Metric)	100
Customs Number	3926909988