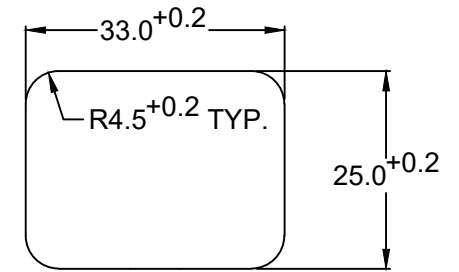
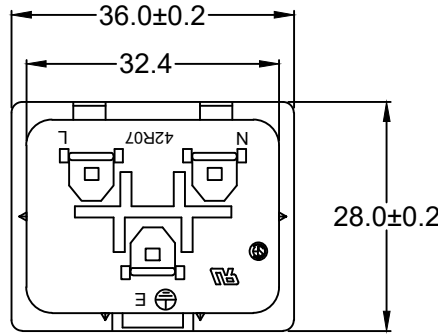


MATERIAL AND FINISH:

Insulator: Polycarbonate, UL-94V-0 rated
 Contacts: Brass, Nickel plated

ELECTRICAL SPECIFICATIONS:

Current rating: 16 A
 Voltage rating: 250 VAC
 Current rating: 20 A
 Voltage rating: 250 VAC
 Insulation resistance: 100 Mohm min. at 500 VDC
 Dielectric withstanding voltage: 2000 VAC for one minute





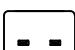
**RECOMMENDED
 PANEL CUTOUT**

ORDERING CODE:

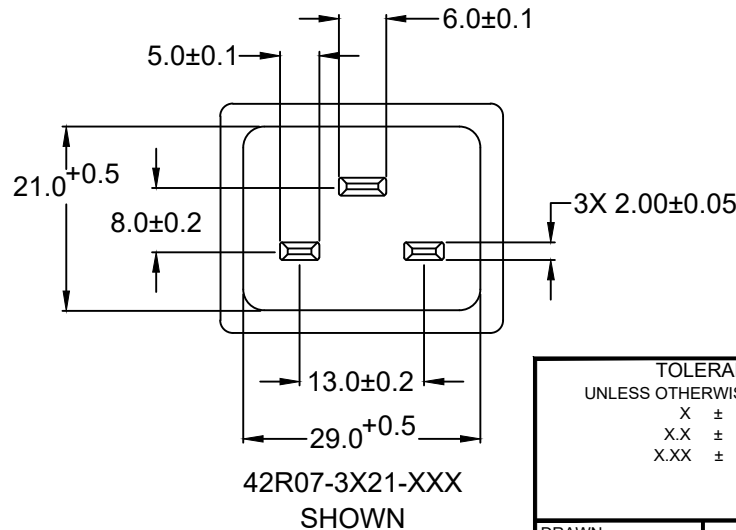
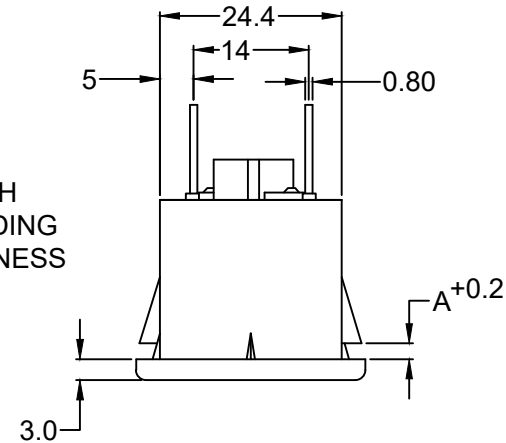
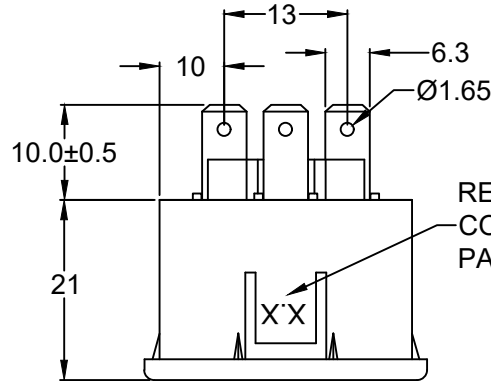
42R07-3 2 -
 1 2 3

- 1) COLOR
 1 = BLACK
 2 = GRAY

2) ELECTRICAL CIRCUIT CONFIGURATION

- 1 = 20A 250V 70°C 2+GROUND 
 2 = 20A 250V 155°C 2+GROUND 
 3 = 20A 250V 70°C 2 POLE 

3) PANEL THICKNESS



P/N	A	MAX. PANEL THICKNESS
42R07-3X2X-150	1.5	1.5
42R07-3X2X-200	2.0	2.0
42R07-3X2X-250	2.5	2.5

ADDITIONAL PANEL THICKNESS
 AVAILABLE ON REQUEST

TOLERANCE UNLESS OTHERWISE SPECIFIED	
X	± 1
X.X	± 0.4
X.XX	± 0.20
DRAWN BY	GQ
DATE:	08/24/01
CHECK BY	TD
DATE:	08/29/01
APPR BY	PB
DATE:	08/29/01

Power Dynamics, Inc.

Phone: 973 560-0019 Whippany, New Jersey Fax: 973 560-0076

PART: 16/20A IEC 60320 APPL. INLET; QC
 TERMINALS; SNAP-IN, PANEL MOUNT

PART #: 42R07-3X2X-XXX		SHEET 1 of 1
SIZE: A	ALL DIMENSIONS FOR REFERENCE ONLY DIMENSIONS ARE IN MILLIMETERS	REV: C
SCALE: NTS		

RoHS
 COMPLIANT

REVISIONS	CHG REF DIM TO DIM	PB
	2 POLE ORDERING CODE WAS 4	PB
	CHG DIM TO DIM	TD
	CHG APPR	PB
CHANGE	CHG DIM TO DIM	PB
	ADD 13.0, 9.7, 13.6, 5.0 DIM	TD
DATE	11/24/04	PB
REV	A	