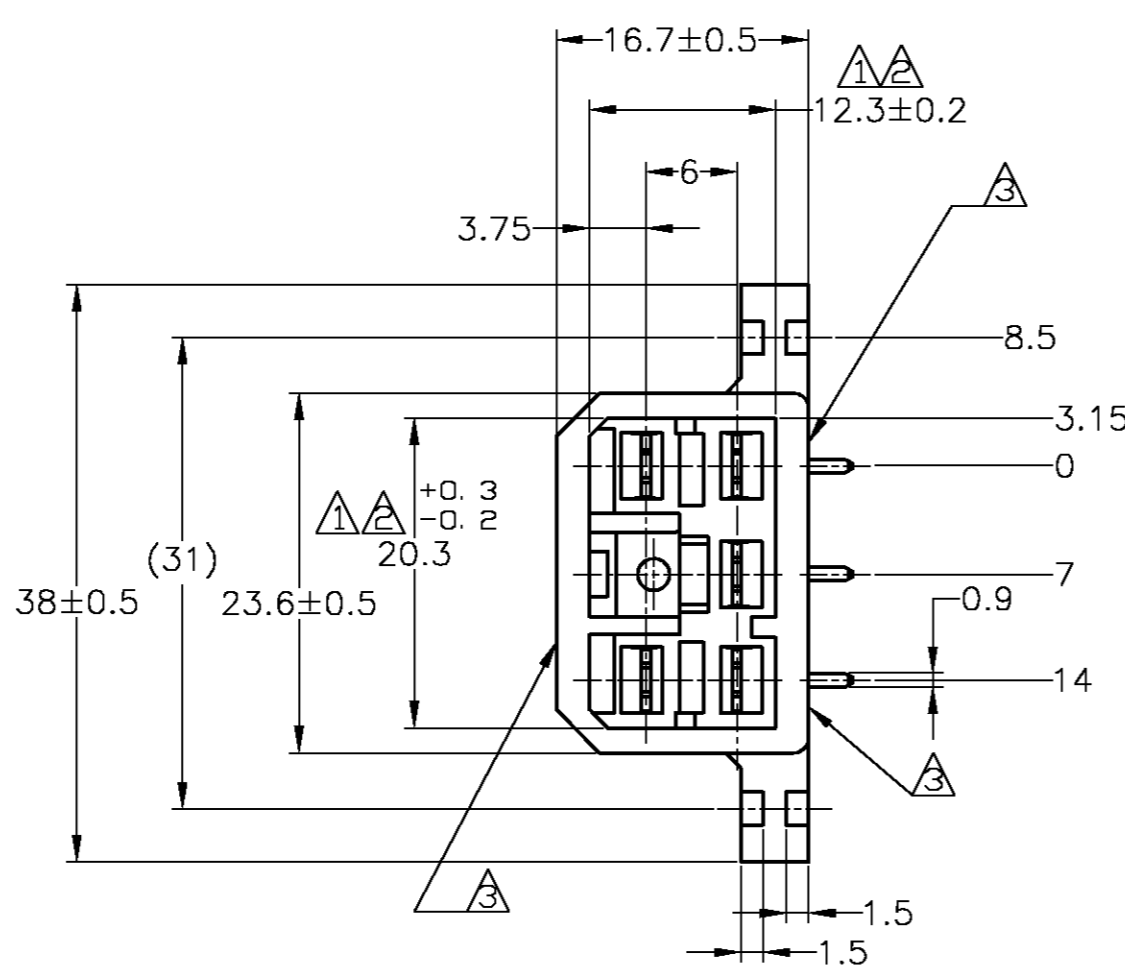
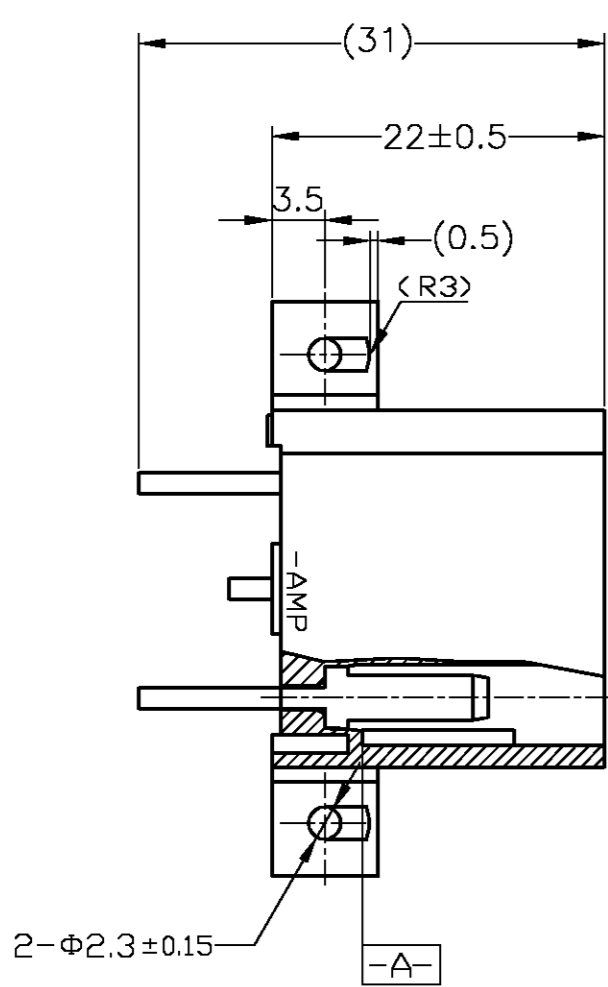


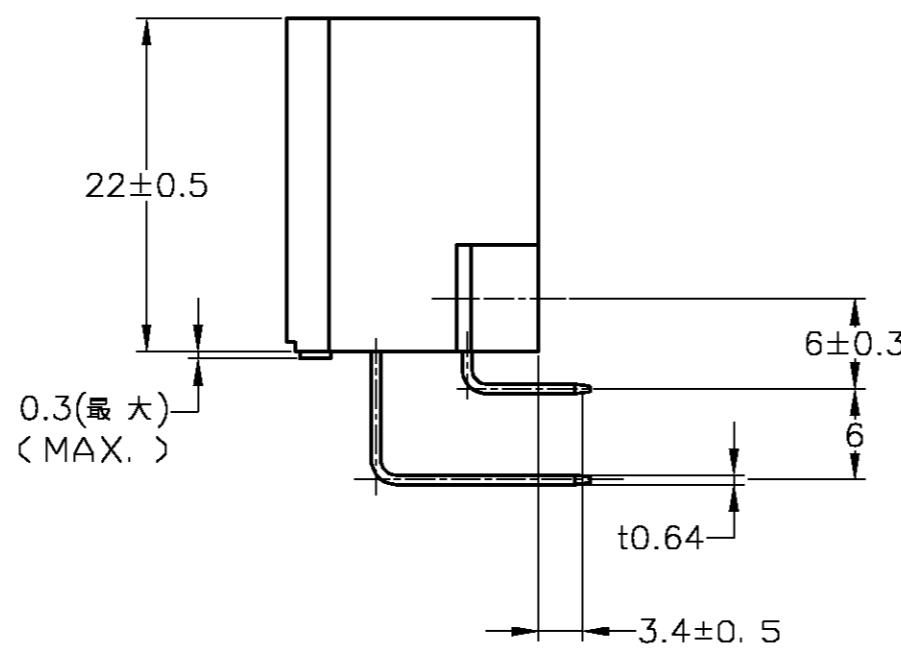
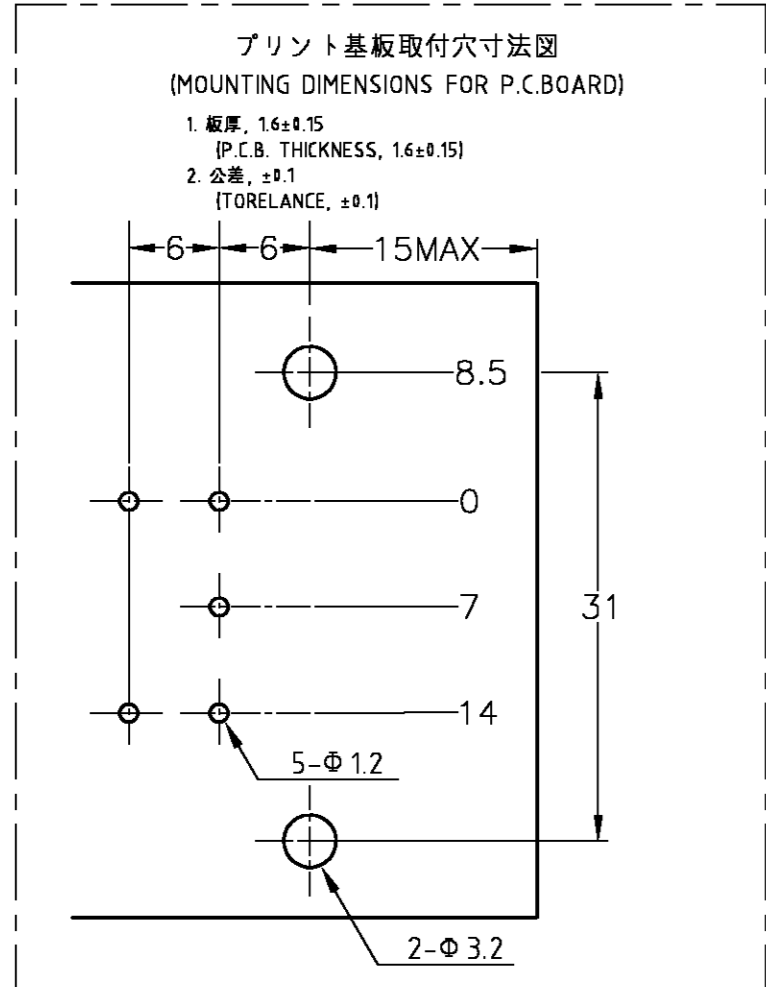
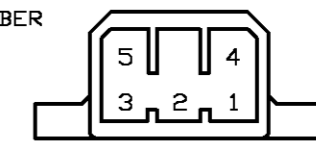
THIS DRAWING IS UNPUBLISHED. RELEASED FOR PUBLICATION
 © COPYRIGHT BY TYCO ELECTRONICS CORPORATION. ALL RIGHTS RESERVED.

LOC	DIST	REVISIONS						
		P	LTR	DESCRIPTION	DATE	DWN	APVD	
J	-	G4		OBSOLETE -5	ECR-08-000600	09JAN08	TS	KB



- 注記:
- △ -A- 面より2mmの範囲で測定のこと。
 - △ 相手ハウジングと所定の機能を満たしてかん合できること。
 - △ フードの反りは0.2以内。
 - 4 推奨取り付けねじ: JIS B 1115 又は、1122 タッピンねじ
なべ1種又は2種、呼び径3長さ6mm以下
(締め付けトルク: 39.2N 以下)
 - 5 適用製品規格 No.108-5093
 - 6 相手ハウジングとのかん合力は、29.4N以下
但し、リセプタクルコンタクトは含まない。
 - △ タブなしタイプ(表参照)回路番号下図参照のこと。

- NOTES:
- △ TO BE MEASURED WITHIN 2mm FROM -A-
 - △ IN COUPLING WITH THE PLUG HOUSING MATING SATISFIES FUNCTION
 - △ WARPAGE 0.2 MAX.
 - 4 RECOMMENDED MOUNTING SCREW: 3mm DIA, 6mm LENGTH (MAX.)
PAN HEAD, CLASS 1 AND 2 TAPPING SCREW SPECIFIED IN JIS B1115, B1122 (TIGHTENING TORQUE: 39.2N MAX.)
 - 5 SPEC. No. 108-5093
 - 6 IN COUPLING WITH THE PLUG HOUSING MATING FORCE 29.4N MAX WITHOUT RECEPTACLE CONTACT
 - △ NON TAB CONTACT'S TYPE (SEE TABLE)
CIRCUIT NUMBER



		SELECTIVE-TIN (MATTE)	SELECTIVE GOLD (0.76μm MIN.)	NATURAL	5172040-8
		SELECTIVE-TIN (MATTE)	SELECTIVE GOLD (0.38μm MIN.)	NATURAL	1-5172040-5
	2	PRE-TIN		NATURAL	2-172040-1
OBSOLETE		TIN-LEAD	SELECTIVE GOLD (0.38μm MIN.)	GREEN	1-172040-8
OBSOLETE		TIN-LEAD	SELECTIVE GOLD (0.38μm MIN.)	NATURAL	1-172040-5
OBSOLETE		TIN-LEAD	SELECTIVE GOLD (0.76μm MIN.)	YELLOW	1-172040-4
OBSOLETE		TIN-LEAD	SELECTIVE GOLD (0.76μm MIN.)	GRAY	1-172040-3
OBSOLETE		TIN-LEAD	SELECTIVE GOLD (0.76μm MIN.)	BLUE	1-172040-2
OBSOLETE		TIN-LEAD	SELECTIVE GOLD (0.76μm MIN.)	GREEN	1-172040-1
OBSOLETE		TIN-LEAD	SELECTIVE GOLD (0.76μm MIN.)	BROWN	1-172040-0
OBSOLETE		TIN-LEAD	SELECTIVE GOLD (0.76μm MIN.)	BLACK	172040-9
		TIN-LEAD	SELECTIVE GOLD (0.76μm MIN.)	NATURAL	172040-8
OBSOLETE		PRE-TIN		YELLOW	172040-7
OBSOLETE		PRE-TIN		BLUE	172040-5
		PRE-TIN		GREEN	172040-4
OBSOLETE		PRE-TIN		BROWN	172040-3
		PRE-TIN		BLACK	172040-2
		PRE-TIN		NATURAL	172040-1
△ NON TAB PLACES タブなし箇所	SOLDERING SIDE 半田付け部	CONTACT SIDE 接触部側		COLOR 色	PART NUMBER 製品型番
CONTACT FINISH コンタクト仕上					

TOLERANCE UNLESS OTHERWISE SPECIFIED:
一般公差

0 <= x <= 10 : ±0.2
10 <= x <= 30 : ±0.25
30 <= x <= 100 : ±0.3
ANGLE : ±3°

THIS DRAWING IS A CONTROLLED DOCUMENT.

DWN: T.SHINOHARA 31AUG07
CHK: K.BETSUI 31AUG07
APVD: K.BETSUI 31AUG07

Tyco Electronics Corporation
Kawasaki, Japan

NAME: 5P HORIZONTAL TYPE CAP HOUSING ASS'Y
製品仕様: MULTI-INTERLOCK CONN. (WIRE TO P.C.B.)

PRODUCT SPEC: 108-5093
APPLICATION SPEC: 取付適用規格

SIZE: A2 CAGE CODE: 00779 DRAWING NO: 172040
WEIGHT: -

MATERIAL: HSG: 66 NYLON CONTACT: BRASS
FINISH: 仕上

CUSTOMER DRAWING SCALE: 2:1 SHEET: 1 of 1 REV: G4