



ANATECH ELECTRONICS INC
RF & Microwave Filters & Products

**442-450 MHz / 462-470 MHz
Cavity Duplexer
Part Number: AD446-466D386**

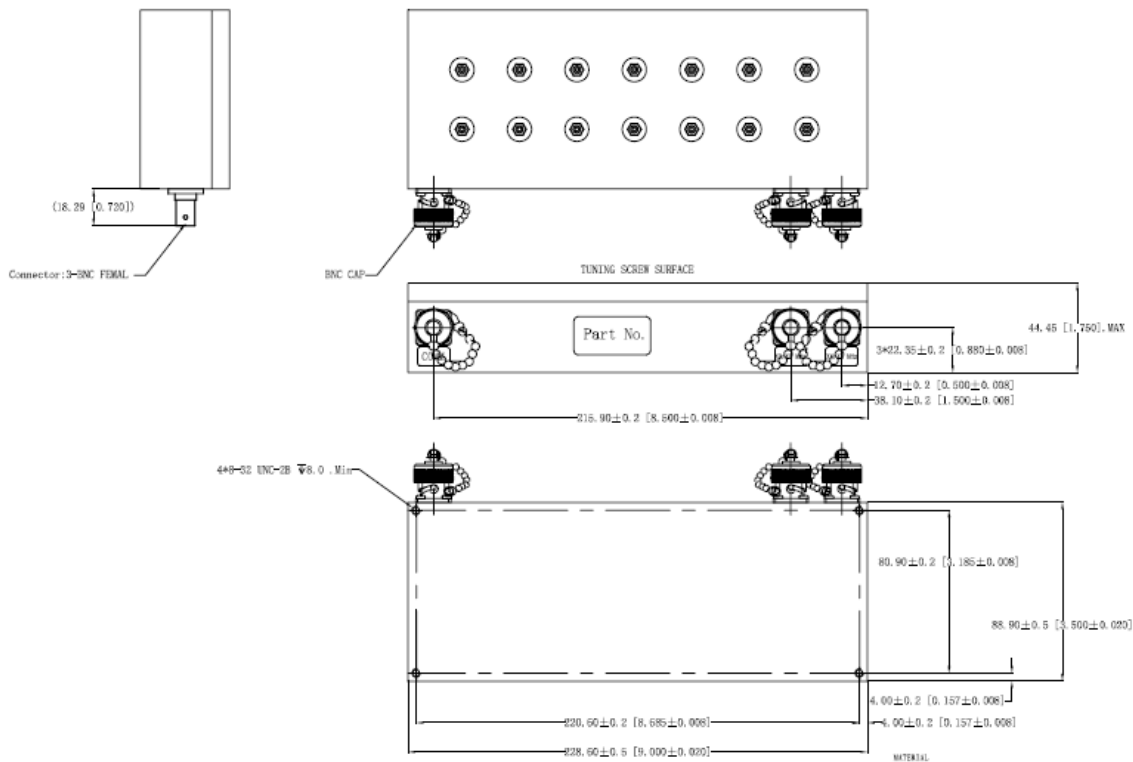


<u>Characteristics</u>	<u>Band 1</u>	<u>Band 2</u>
Passband:	442-450 MHz	462-470 MHz
Bandwidth:	8 MHz	8 MHz
Passband Return Loss:	15 dB	15 dB
Passband Insertion Loss:	1 dB	1 dB
Passband Ripple:	0.2 dB	0.2 dB
Input / Output Impedance:	50 Ohms	50 Ohms
Isolation:	45 dB	40 dB
Power Handling:	50 Watts	50 Watts

<u>Mechanical</u>	
Mounting Method:	Threaded Mounting Holes
Connector Type:	BNC (F)
Dimensions:	

<u>Environmental</u>	
Operating Temperature:	-40 to +70 deg.C
Storage Temperature:	-50 to +90 deg.C

Outline Drawing:





Response Plots:

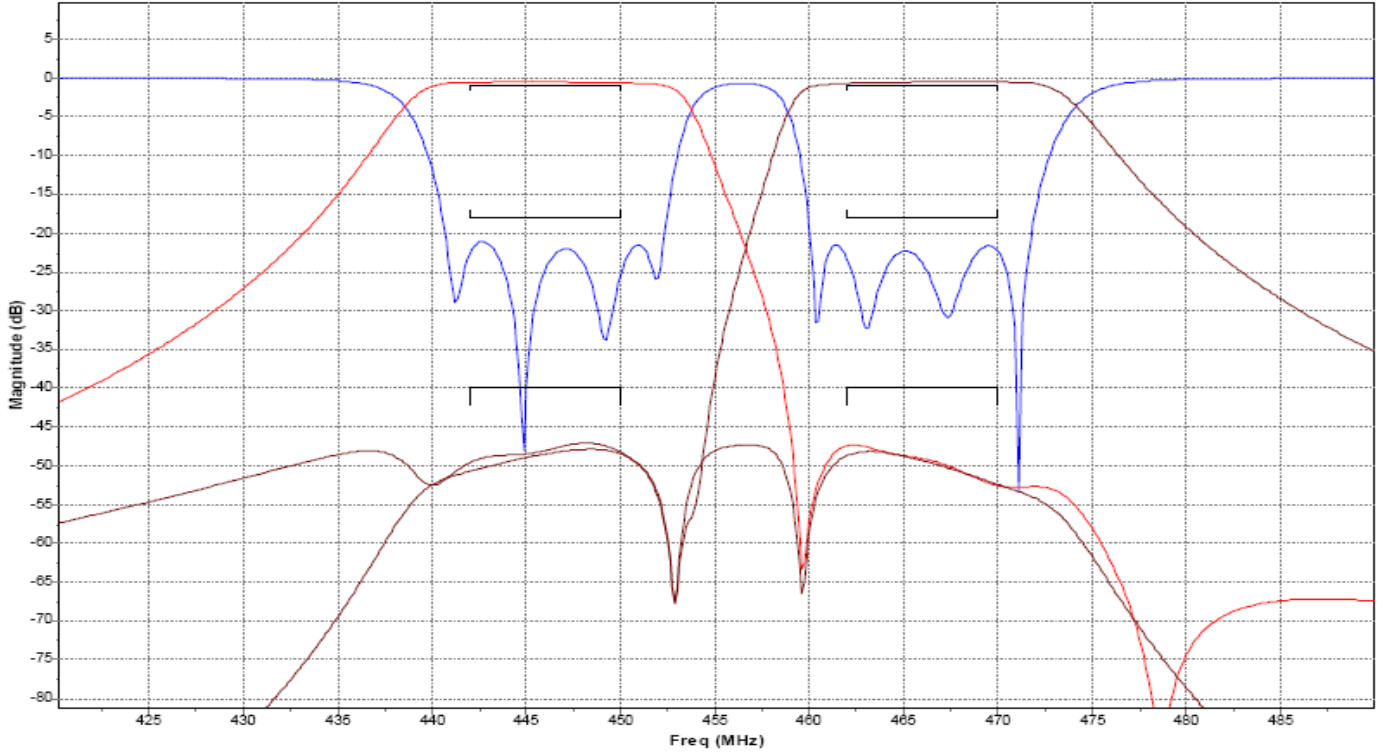


Fig.1 Return Loss and Rejection

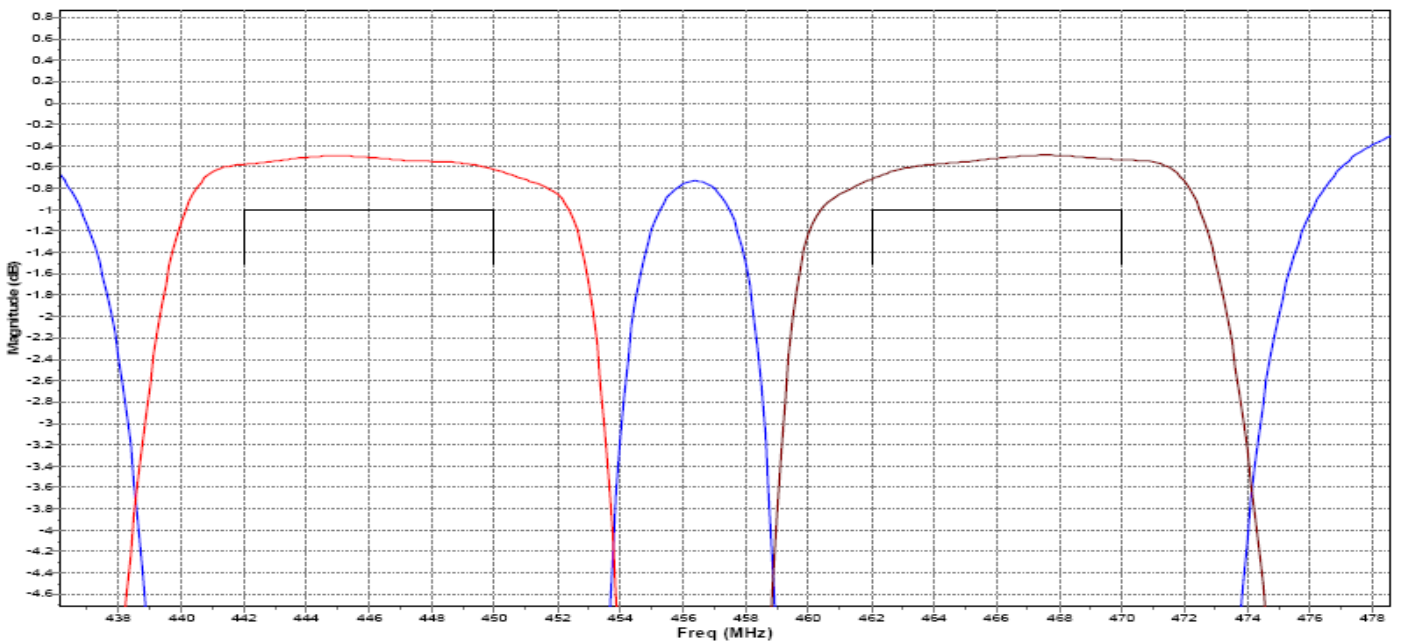


Fig.2 Insertion Loss and Matching