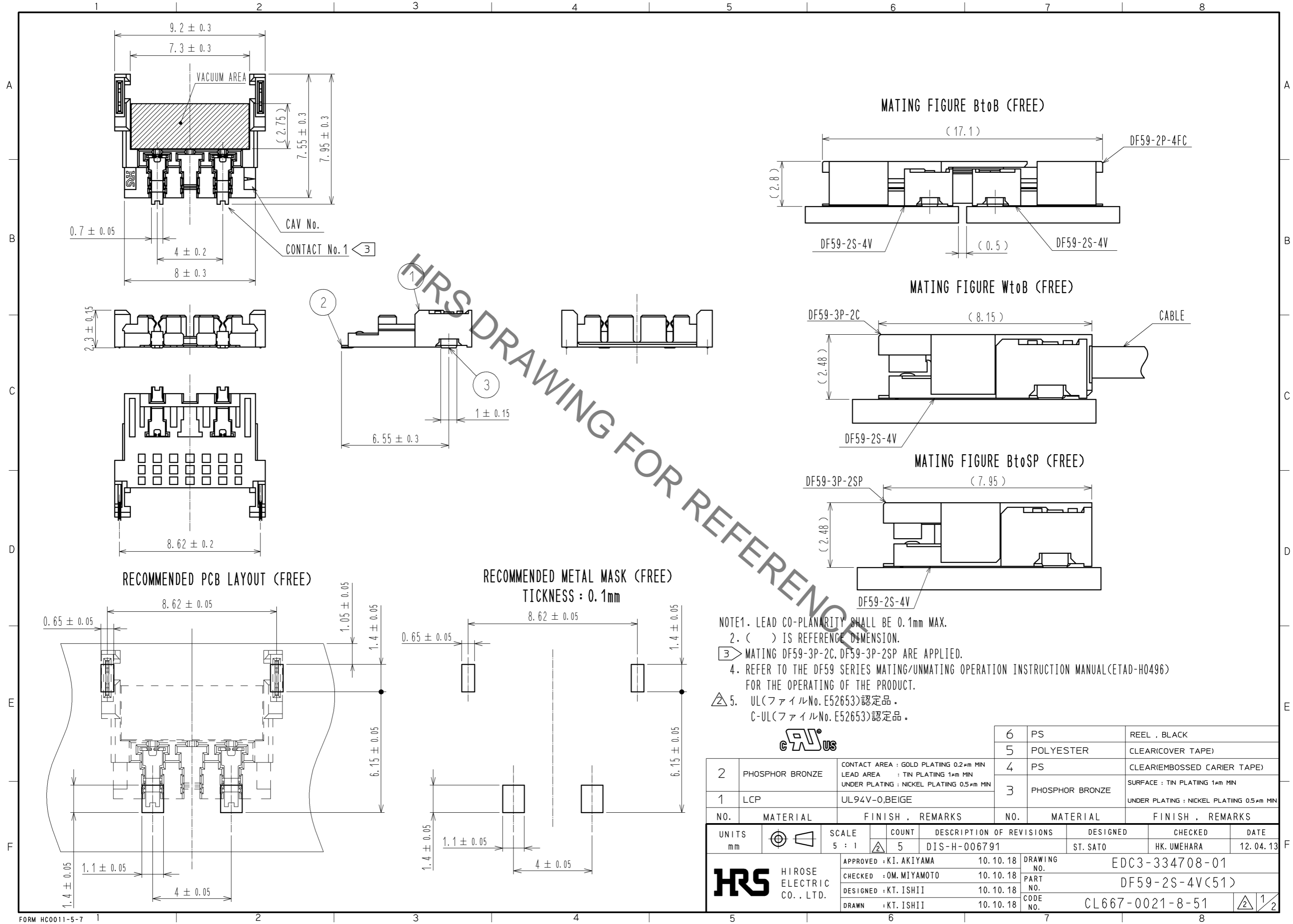


May.1.2023 Copyright 2023 HIROSE ELECTRIC CO., LTD. All Rights Reserved.
In case of consideration for using Automotive equipment / device which demand high reliability, kindly contact our sales window correspondents.



- NOTE1. LEAD CO-PLANARITY SHALL BE 0.1mm MAX.
 2. () IS REFERENCE DIMENSION.
 ③ MATING DF59-3P-2C, DF59-3P-2SP ARE APPLIED.
 4. REFER TO THE DF59 SERIES MATING/UNMATING OPERATION INSTRUCTION MANUAL(ETAD-H0496) FOR THE OPERATING OF THE PRODUCT.
 △ 5. UL(ファイルNo. E52653)認定品.
 C-UL(ファイルNo. E52653)認定品.

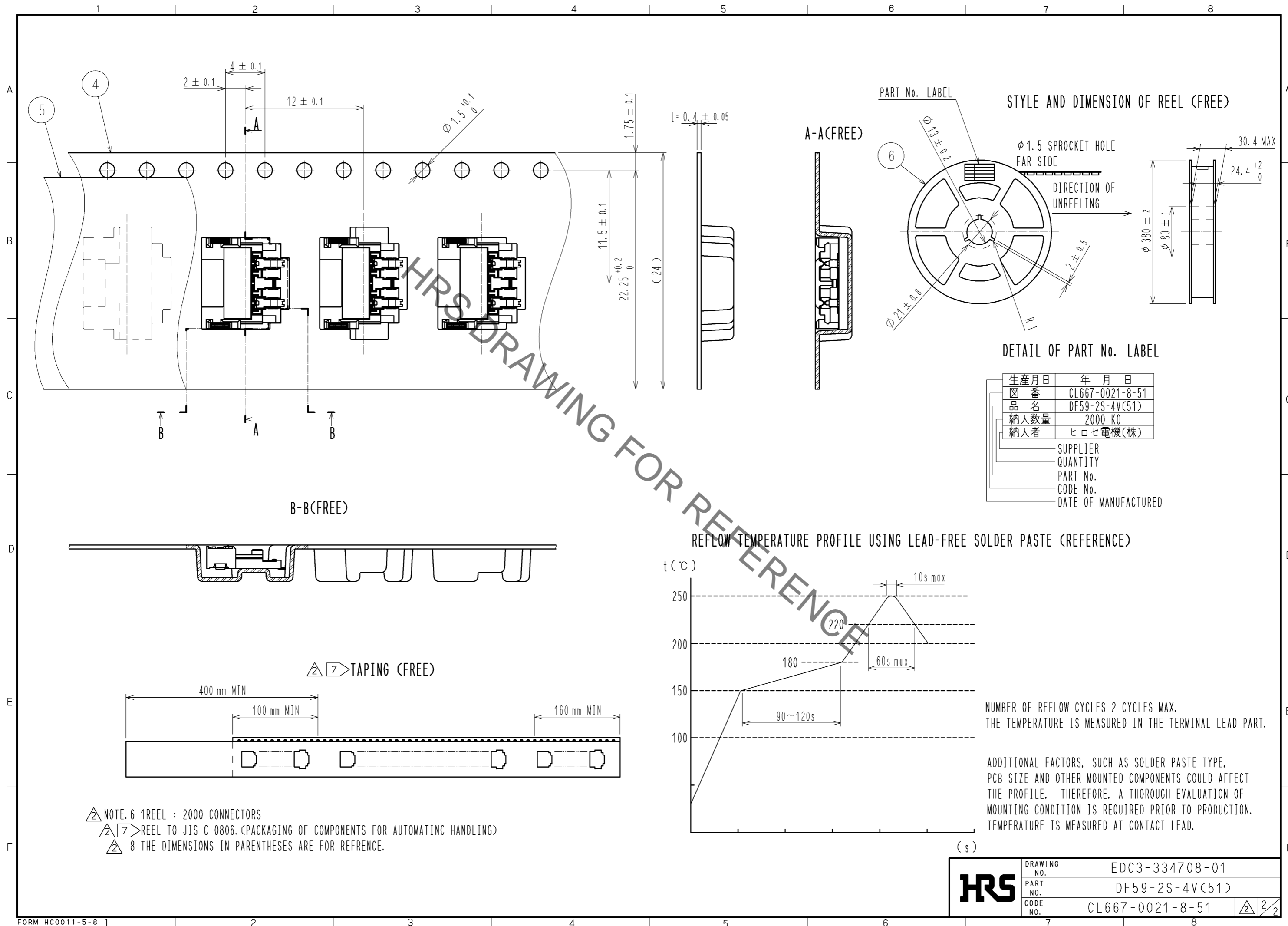


NO.	MATERIAL	FINISH	REMARKS	NO.	MATERIAL	FINISH	REMARKS
2	PHOSPHOR BRONZE		CONTACT AREA : GOLD PLATING 0.2μm MIN LEAD AREA : TIN PLATING 1μm MIN UNDER PLATING : NICKEL PLATING 0.5μm MIN	6	PS		REEL , BLACK
1	LCP		UL94V-0,BEIGE	5	POLYESTER		CLEAR(COVER TAPE)
				4	PS		CLEAR(EMBOSSED CARRIER TAPE)
				3	PHOSPHOR BRONZE		SURFACE : TIN PLATING 1μm MIN UNDER PLATING : NICKEL PLATING 0.5μm MIN

UNITS	SCALE	COUNT	DESCRIPTION OF REVISIONS	DESIGNED	CHECKED	DATE
mm	5 : 1	5	DIS-H-006791	ST. SATO	HK. UMEHARA	12.04.13

APPROVED	DATE	DRAWING NO.
KI. AKIYAMA	10.10.18	EDC3-334708-01
CHECKED	DATE	PART NO.
OM. MIYAMOTO	10.10.18	DF59-2S-4V(51)
DESIGNED	DATE	CODE NO.
KT. ISHII	10.10.18	CL667-0021-8-51
DRAWN	DATE	
KT. ISHII	10.10.18	

May.1.2023 Copyright 2023 HIROSE ELECTRIC CO., LTD. All Rights Reserved.
 In case of consideration for using Automotive equipment / device which demand high reliability, kindly contact our sales window correspondents.



HRS	DRAWING NO.	EDC3-334708-01
	PART NO.	DF59-2S-4V(51)
	CODE NO.	CL667-0021-8-51
		2/2