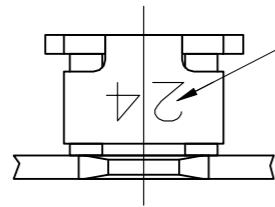


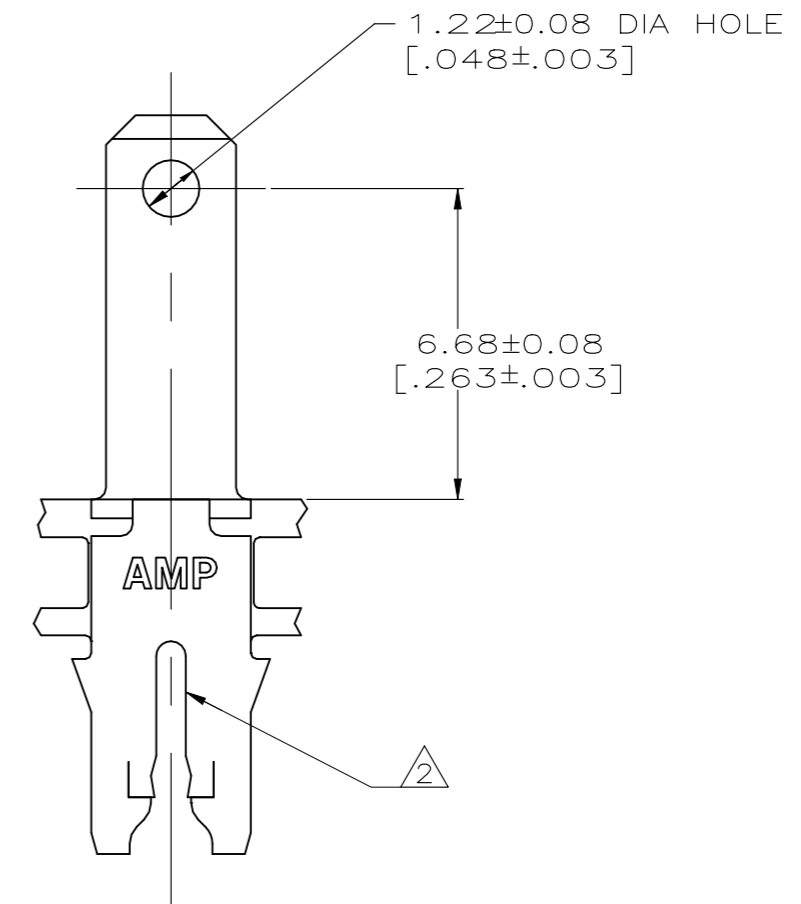
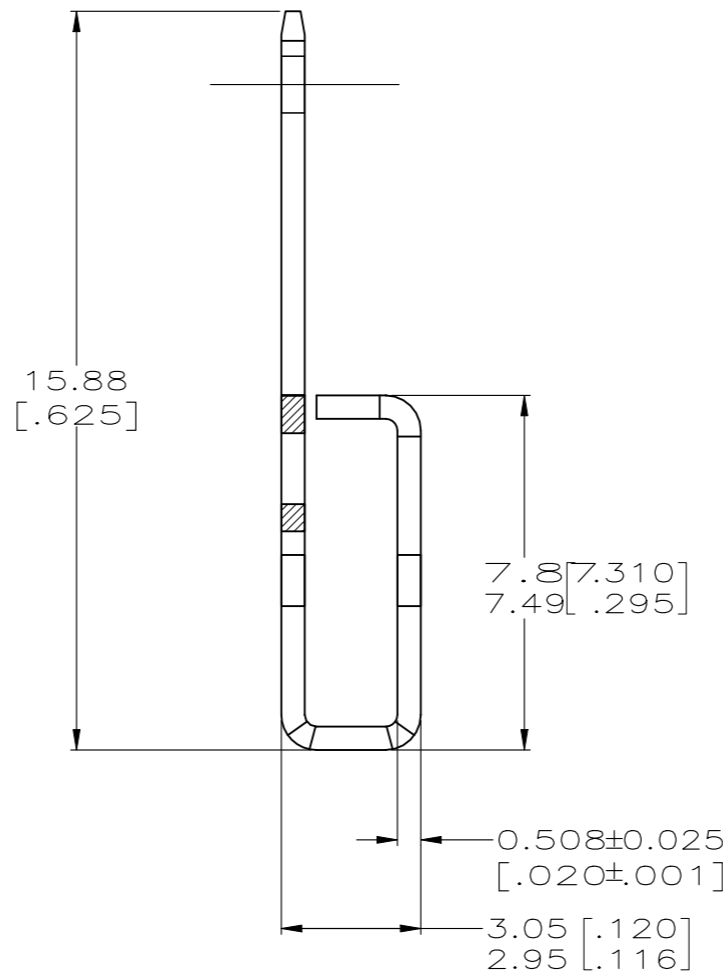
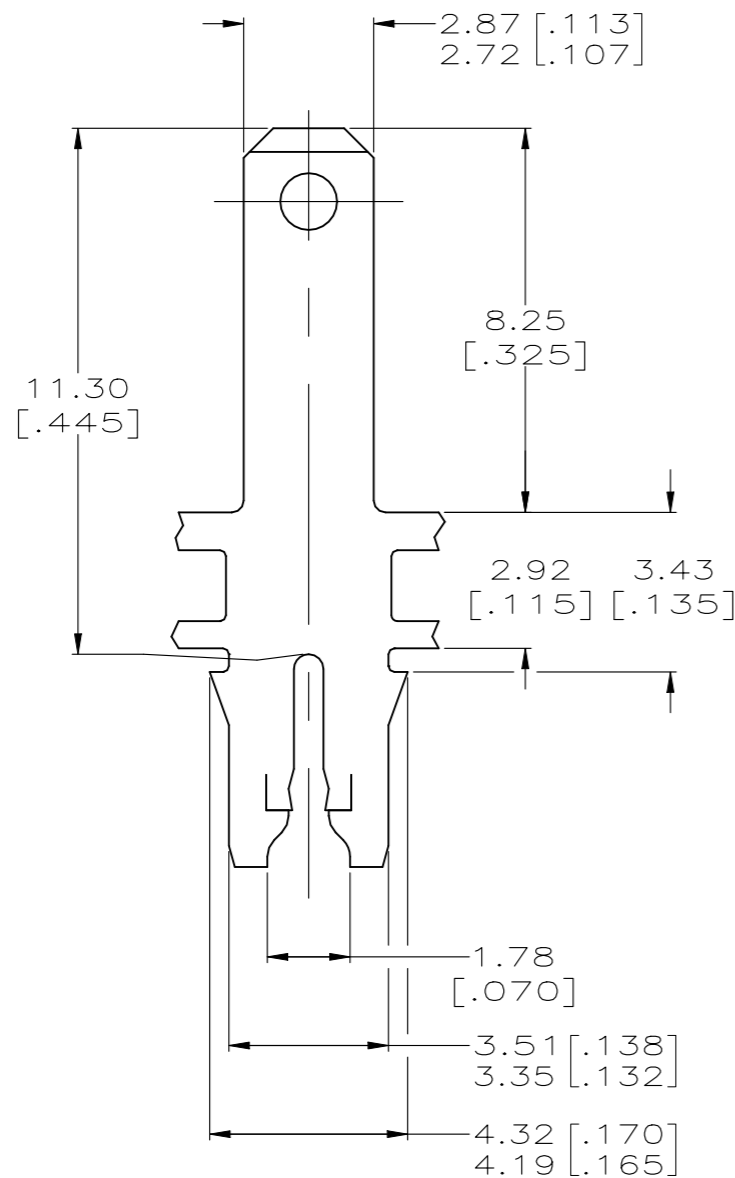
IDENTIFICATION NUMBER 24 FOR MAGNET WIRE RANGE



REVISIONS					
P	LTR	DESCRIPTION	DATE	DWN	APVD
	G2	REVISED PER ECR-22-141423	06JUN2022	PC	TD

1 CONTINUOUS STRIP ON REELS WITH TERMINALS LOCATED ON 5.59±0.08 [.220 .003] CENTERS. SLOT TERMINATES A SINGLE MAGNET WIRE ONLY.

2 COPPER RANGE: 0.91-1.20mm [#19-#16.5] AWG. ALUMINUM RANGE: 0.95-1.20mm [#18.5-#16.5] AWG. ALUMINUM WIRE RANGE APPLIES FOR POST-TIN PLATED VERSIONS ONLY.



TIN OVER NICKEL FOR COPPER WIRE ONLY	63145-2
TIN PLATED	63145-1
FINISH	PART NUMBER

THIS DRAWING IS A CONTROLLED DOCUMENT.		DWN 30MAR2001 MICHAEL S. FEHER		STE TE Connectivity	
DIMENSIONS: mm		CHK 30MAR2001 KURT A. RANDOLPH			
TOLERANCES UNLESS OTHERWISE SPECIFIED:		APVD 30MAR2001 KURT A. RANDOLPH		NAME	
0 PLC ± -		PRODUCT SPEC		TERMINAL,	
1 PLC ± -		108-2012		TAB, 2.79 [.110] FASTON,	
2 PLC ± 0.25 [.010]		APPLICATION SPEC		300 SERIES MAG-MATE	
3 PLC ± -		114-2046		SIZE	CAGE CODE
4 PLC ± -		WEIGHT 0		A3	00779
ANGLES ± -		CUSTOMER DRAWING		DRAWING NO	RESTRICTED TO
FINISH		SCALE 8:1		G-63145	—
BRASS		SHEET 1 OF 1		REV G2	
TIN PLATED		REV G2			