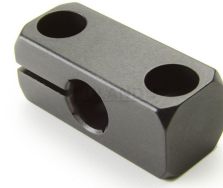
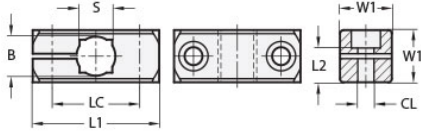




MT8-CC1W-M4-AN

Ruland One-Way Connector Clamp, Thru Hole 8mm, L 31.5mm, Black Anodized Aluminum



Description

Ruland MT8-CC1W-M4-AN is a one-way base connector with a 31.5mm base diameter, 8mm round thru holes, and M4 clamp screw. It is designed to fit with Ruland tubes that begin with M4. MT8-CC1W-M4-AN is aluminum with a black anodized finish and screws are 304 stainless steel for added corrosion resistance when compared to unplated types. This one-way base connector is typically used as a base in support structures for mounting sensors, screens, reflectors, plexiglass machine guards, and other industrial components. It can be permanently installed on extruded aluminum frames, sheet metal, and other surfaces using M4 hardware or the user can opt for portability by using MAGNET-43-22 magnetic base. MT8-CC1W-M4-AN is a cost effective option when compared to two-way bases for users that only require a tube in one orientation. MT8-ALK-M4-16 adjustable clamping handles can be used in place of standard hardware if rapid fine repositioning of the tube is required. MT8-CC1W-M4-AN is manufactured by Otto Ganter, inventoried by Ruland, and RoHS3 compliant.

Product Specifications

Thru Hole Diameter B	8 mm	Thru Hole Tolerance	+0.09/-0 mm
Center To Center LC	22 mm	Width & Height W1	14 mm
Overall Length L1	31.5 mm	Mounting Screw SC	M4
Clamp Screw CL	M4	Screw Length L2	10 mm
Weight (lbs)	0.024300	Material Specification	Anodized Aluminum
Manufacturer	JW Winco/ Otto Ganter	UPC	634529231364
Country of Origin	Germany	Tariff Code	7609.00.0000
UNSPC	31162908		