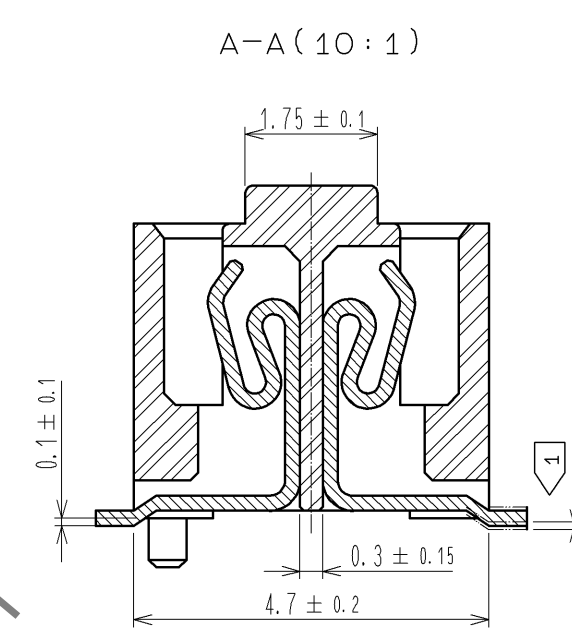
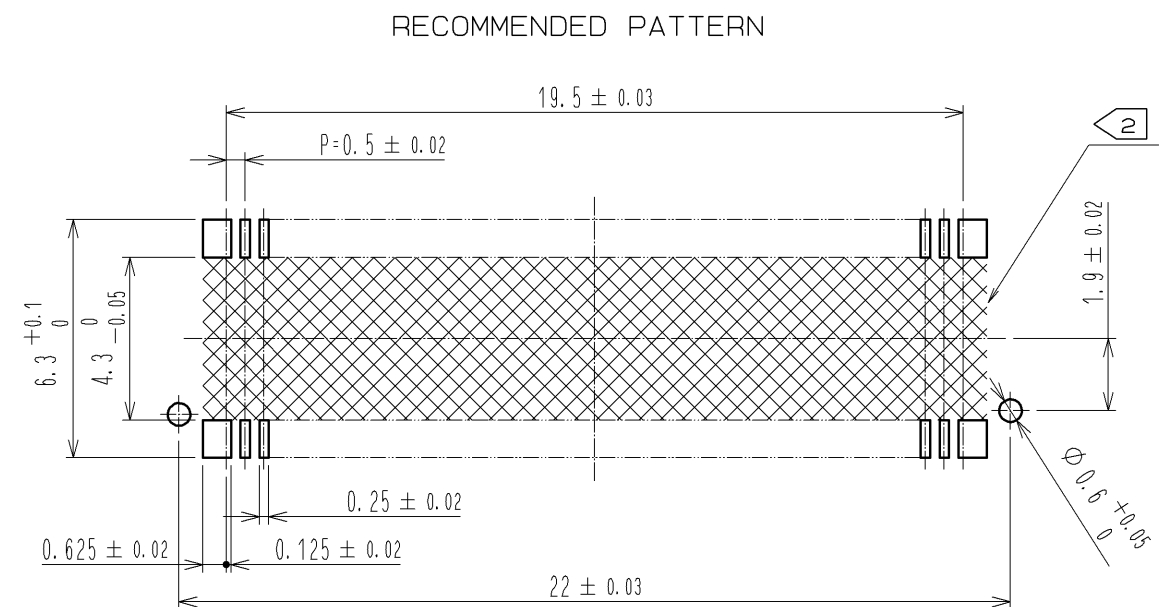
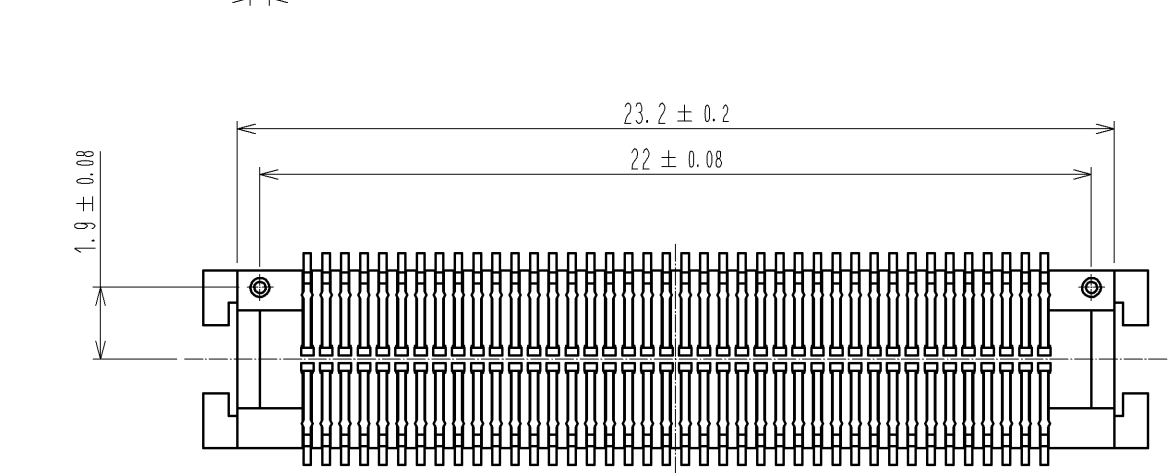
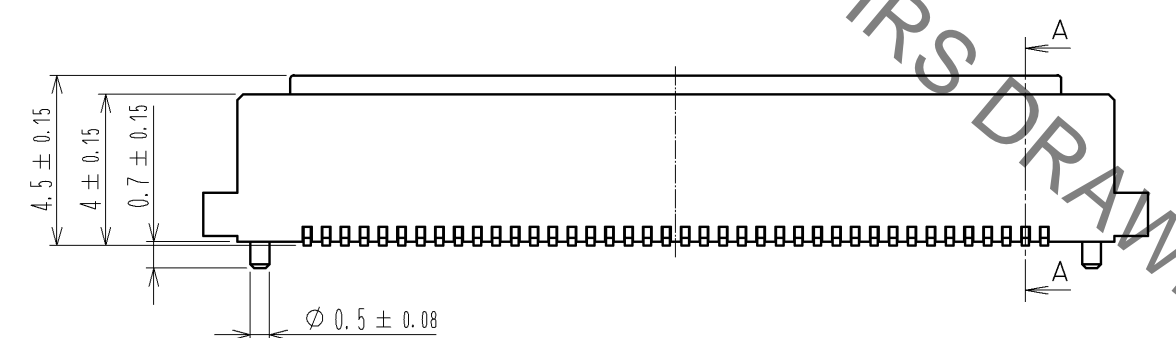
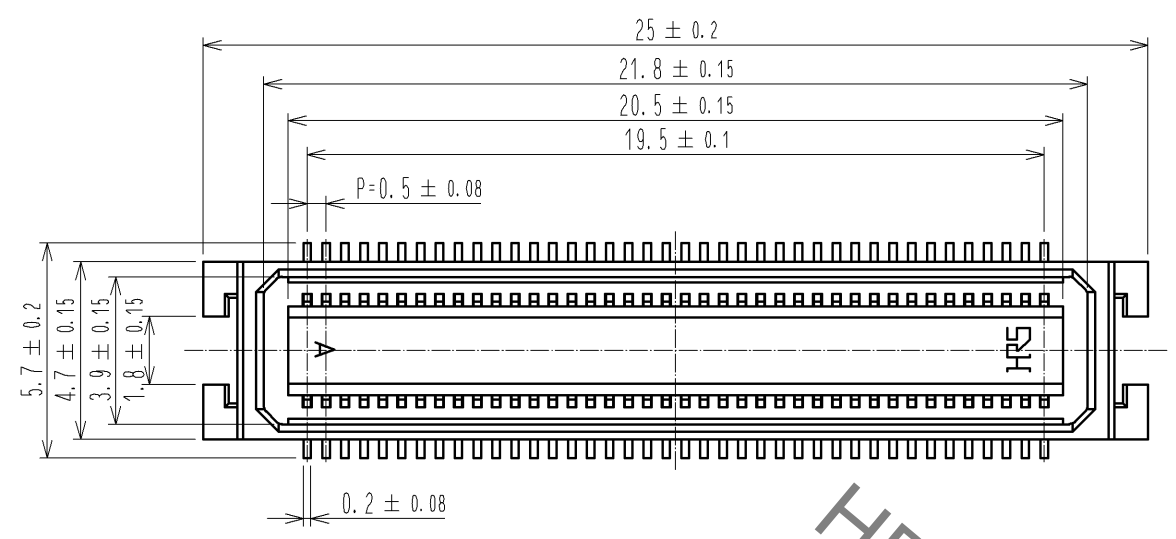
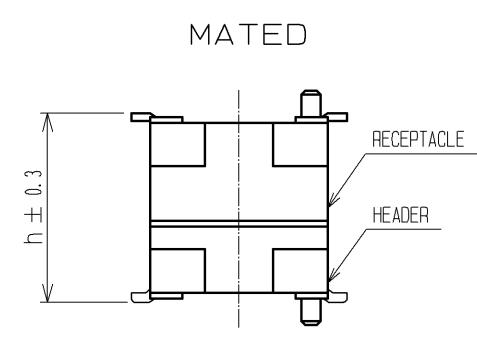


May.1.2023 Copyright 2023 HIROSE ELECTRIC CO., LTD. All Rights Reserved.
In case of consideration for using Automotive equipment / device which demand high reliability, kindly contact our sales window correspondents.



HRS DRAWING FOR REFERENCE

MATED HIGHT (h)	RECEPTACLE NO.
HEADER NO.	DF17A(4.0)-80DS-0.5V(57)
DF17#(2.0)-80DP-0.5V(57)	6
DF17#(4.0)-80DP-0.5V(57)	8



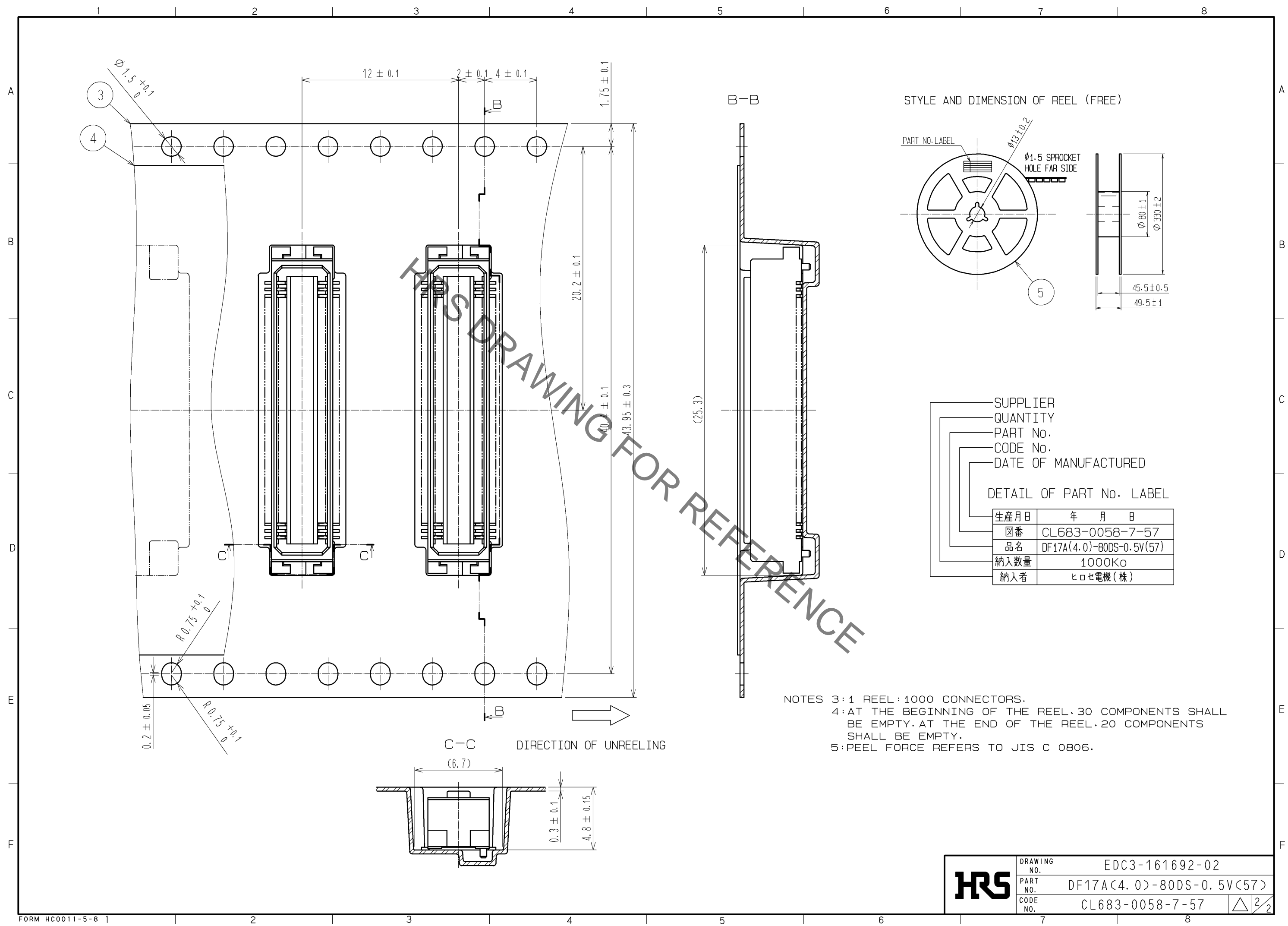
NOTES 1: LEAD CO-PLANARITY INCLUDE REINFORCED METAL FITTINGS SHALL BE 0.1mm MAX.
2: WHEN A PART MARKED WITH [cross-hatch] HAS A PATTERN BUT NO RESIST ON IT. TAKE CARE TO PREVENT THE CONNECTOR FROM TOUCHING IT.

NO.	MATERIAL	FINISH . REMARKS	NO.	MATERIAL	FINISH . REMARKS
1	PHOSPHER BRONZE	CONTACT AREA:GOLD PLATED 0.1#m min LEAD AREA:TIN PLATED 1#m min UNDER PLATING:NICKEL PLATED 1#m min	5	PS	BLACK (PLASTIC REEL)
			4	POLYESTER	CLEAR (COVER TAPE)
			3	A-PET	CLEAR (EMBOSSD CARRIER TAPE)
			2	POLYAMIDE (PA6T)	WHITE BEIGE , UL94V-0

UNITS	SCALE	COUNT	DESCRIPTION OF REVISIONS	DESIGNED	CHECKED	DATE
mm	5 : 1	△				

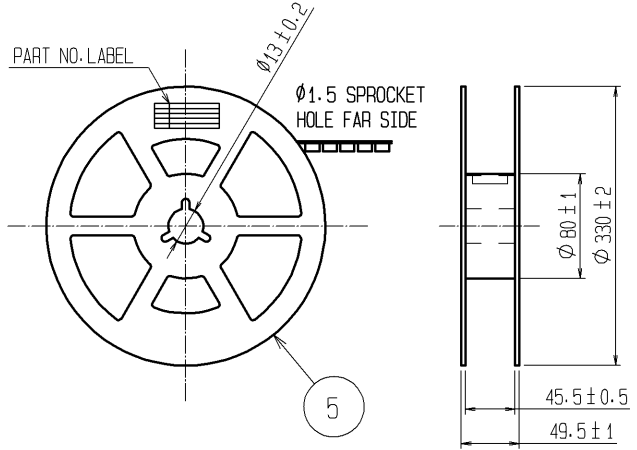
APPROVED : KH. IKEDA	08.11.20	DRAWING NO.	EDC3-161692-02
CHECKED : TS. MIYAZAKI	08.11.20	PART NO.	DF17A(4.0)-80DS-0.5V(57)
DESIGNED : TY. YAMASAKI	08.11.19	CODE NO.	CL683-0058-7-57
DRAWN : TY. YAMASAKI	08.11.19		

May.1.2023 Copyright 2023 HIROSE ELECTRIC CO., LTD. All Rights Reserved.
In case of consideration for using Automotive equipment / device which demand high reliability, kindly contact our sales window correspondents.



THIS DRAWING FOR REFERENCE

STYLE AND DIMENSION OF REEL (FREE)



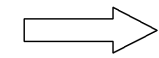
SUPPLIER
QUANTITY
PART No.
CODE No.
DATE OF MANUFACTURED

DETAIL OF PART No. LABEL

生産月日	年 月 日
図番	CL683-0058-7-57
品名	DF17A(4.0)-80DS-0.5V(57)
納入数量	1000K0
納入者	ヒロセ電機(株)

NOTES 3:1 REEL:1000 CONNECTORS.
4:AT THE BEGINNING OF THE REEL,30 COMPONENTS SHALL BE EMPTY.AT THE END OF THE REEL,20 COMPONENTS SHALL BE EMPTY.
5:PEEL FORCE REFERS TO JIS C 0806.

DIRECTION OF UNREELING



HRS	DRAWING NO.	EDC3-161692-02
	PART NO.	DF17A(4.0)-80DS-0.5V(57)
	CODE NO.	CL683-0058-7-57
		\triangle 2/2