

Insulated cross-connector, No. of poles: 10, Mounting type: Plug in, Width: 34.1 mm, Colour: Red

### Business data

Article number	<u>27130.9</u>
Article name	PQI 1,5/10 RD
GTIN (EAN)	4044211225209
Packaging unit	10
Quantity unit	PC
Weight per piece (not including packaging)	3.4 g
Weight per piece (including packaging)	3.63 g
Unit of weight	G
Customs number	85389099
Country of origin	DE
Prio-Article	27130.9
Product description	Insulated cross-connector

### Technical data

#### Dimensions

Length	3.2 mm
Width	34.1 mm
Height	14.5 mm
Pitch size	3.5 mm

#### Ratings

Max. voltage	500 V
Rated current	17.5 A
Current load, max.	17,5 A
Rated cross-section	1.5 mm <sup>2</sup>
Contamination degree	3

#### Connection data

No. of poles	10
--------------	----

#### Materials

Insulation housing	Polyamide 6.6
Flammability class UL 94	V-0
Working temperature, min.	-40 °C
Working temperature, max.	120 °C

#### Further technical data

Mounting type	Plug in
Insulation available	✓
Touch protection is available	✓
Number of bridged terminals	10

#### Environmental Product Compliance

REACH Conform	yes
REACH Candidate Substance Note	No
RoHS Conform	yes

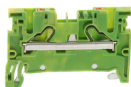
---

### Media

---

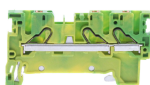
### Accessories

#### ##INVERSE##CONTA-CONNECT



Protective earth terminal, Push-in connection, Mounting type: Mounting rail TS 35/7.5, Rated cross-section: 1.5 mm<sup>2</sup>, Width: 3.5 mm, Colour: Green-yellow

Article number	Article name	GTIN (EAN)	Packaging unit
<u>27001.2</u>	PSL 1,5/2A GNYE	4044211223687	50 ST



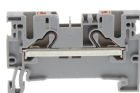
Protective earth terminal, Push-in connection, Mounting type: Mounting rail TS 35/7.5, Rated cross-section: 1.5 mm<sup>2</sup>, Width: 3.5 mm, Colour: Green-yellow

Article number	Article name	GTIN (EAN)	Packaging unit
<u>27003.2</u>	PSL 1,5/3A GNYE	4044211223724	50 ST



Protective earth terminal, Push-in connection, Mounting type: Mounting rail TS 35/7.5, Rated cross-section: 1.5 mm<sup>2</sup>, Width: 3.5 mm, Colour: Green-yellow

Article number	Article name	GTIN (EAN)	Packaging unit
<u>27005.2</u>	PSL 1,5/4A GNYE	4044211223762	50 ST



Feed-through terminal, Push-in connection, Mounting type: Mounting rail TS 35/7.5, Rated cross-section: 1.5 mm<sup>2</sup>, Width: 3.5 mm, Colour: Grey

Article number	Article name	GTIN (EAN)	Packaging unit
<u>27000.6</u>	PRK 1,5/2A GR	4044211223670	50



Feed-through terminal, Push-in connection, Mounting type: Mounting rail TS 35/7.5, Rated cross-section: 1.5 mm<sup>2</sup>, Width: 3.5 mm, Colour: Grey

Article number	Article name	GTIN (EAN)	Packaging unit
<u>27004.6</u>	PRK 1,5/4A GR	4044211223755	50

### ##INVERSE##CONTA-CONNECT



Protective earth terminal, Push-in connection, Mounting type: Mounting rail TS 35/7.5,  
Rated cross-section: 1.5 mm<sup>2</sup>, Width: 3.5 mm, Colour: Green-yellow

Article number	Article name	GTIN (EAN)	Packaging unit
<a href="#">27001.2</a>	PSL 1,5/2A GNYE	4044211223687	50 ST