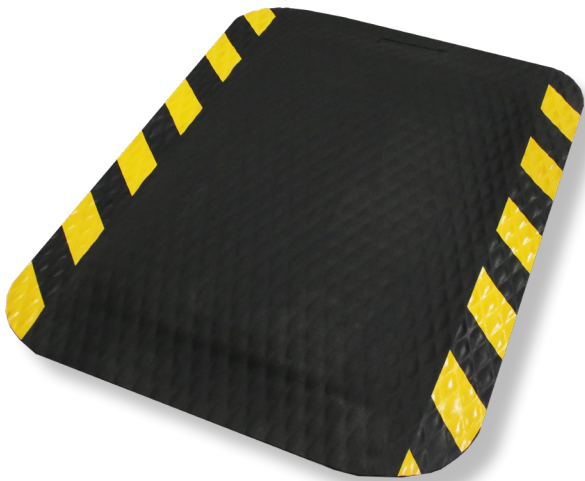


# Hog Heaven<sup>®</sup> Mats

## Anti-Fatigue Mats • Indoor

Hog Heaven anti-fatigue mats are designed to provide comfort and durability in a variety of harsh conditions.

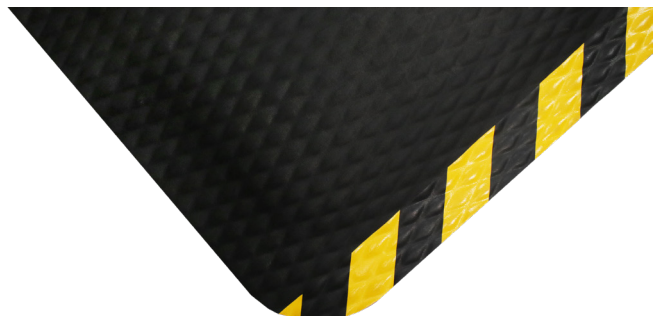


- **Comfortable** – High-density nitrile-blended cushion helps eliminate pressure to the lower back and legs, providing superior comfort
- **Safe** – Certified high-traction by the National Floor Safety Institute (NFSI); sloped edges provide a safe transition from floor to mat
- **Durable** – Nitrile-blended cushion provides years of useful service life; cushion is molded, not glued, to the nitrile rubber surface so it will not separate; edges will not crack or curl
- **Versatile** – Welding safe; ESD rating of electrically conductive; chemical resistant; surface is grease/oil proof and cushion is grease/oil resistant
- Available in 5/8" or 7/8" thicknesses with solid black or with OSHA-approved caution yellow borders on two sides

Can be customized with your logo, design, or message (see Hog Heaven Impressions)



Hog Heaven with black border



Hog Heaven with striped border

# Hog Heaven<sup>®</sup> Mats

Anti-Fatigue Mats • Indoor



## 5/8" Thickness

Product No. 421 (black border)  
Product No. 423 (striped border)

Size (ft.)	Size (in.)	Product Weight*
2' x 3'	23" x 32"	5.5 lbs.
3' x 5'	32" x 58"	14.2 lbs.
3' x 12'	32" x 142"	35.5 lbs.
4' x 6'	46" x 69"	24.3 lbs.
4.8' x 8'	58" x 96"	43 lbs.

\*Product weight based on 48 mil backing

**Note:** Custom sizes are available in widths of 2' (26"), 3' (32"), 4' (46"), and 4.8' (58") and lengths up to 100'. Please note that mats over 60' will have up to 2 seams.

Mat sizes are approximate as rubber shrinks and expands in conjunction with temperature and time. Tolerable manufacturing size variance is 3-5%.

## 7/8" Thickness

Product No. 422 (black border)  
Product No. 424 (striped border)

Size (ft.)	Size (in.)	Product Weight*
2' x 3'	23" x 32"	6.5 lbs.
3' x 5'	32" x 58"	16 lbs.
3' x 12'	32" x 142"	38.3 lbs.
4' x 6'	46" x 69"	26.3 lbs.
4.8' x 8'	58" x 96"	46 lbs.

\*Product weight based on 52 mil backing

**Note:** Custom sizes are available in widths of 2' (26"), 3' (32"), 4' (46"), and 4.8' (58") and lengths up to 100'. Please note that mats over 60' will have up to 2 seams.

Mat sizes are approximate as rubber shrinks and expands in conjunction with temperature and time. Tolerable manufacturing size variance is 3-5%.

Ground wire accessories available for use in electrically sensitive environments.

### Ground Wire Accessories

Snap and Wire	Product No. 9911-1
Wire Only	Product No. 9911-2
Snap Only	Product No. 9911-3
Heel Grounders	Product No. 924