

Driver LCO 20W 350/500/700mA pc C ADV UNV

OUTDOOR advanced series



Product description

- _ Constant current LED driver
- _ Only for US applications
- _ Dimmable via leading edge and trailing edge phase dimmers
- _ Dimming range 10 to 100 %
- _ Class 2 power supply
- _ FCC Part 15
- _ Dry and damp location
- _ Max. output power 20 W
- _ Up to 86 % efficiency
- _ 5 years guarantee (conditions at www.tridonic.com)

Housing properties

- _ Casing: polycarbonate, black
- _ Potted style
- _ Type of protection IP66

Functions

- _ Over voltage protection
- _ Short-circuit protection
- _ No-load protection

Typical applications

- _ For lantern, landscape, decorative

Website

<http://www.tridonic.us/28002249>



Spotlights



Downlights



Linear



Area



Floor | Wall



Free-standing



Street

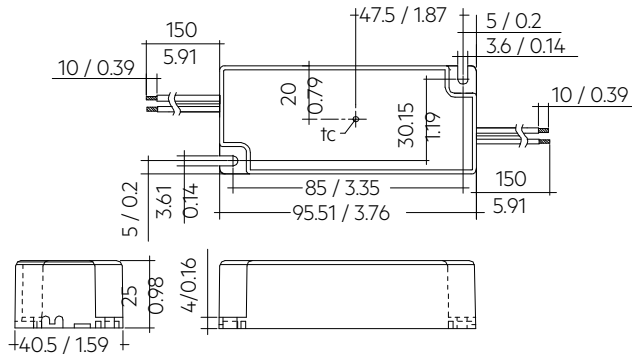


Decorative

Driver LCO 20W 350/500/700mA pc C ADV UNV

OUTDOOR advanced series

The complete data sheet for this product is available in the Downloads section.



Dimensions in mm / inch

Approval marks**Standards**

UL 8750, UL 1310, FCC PART 15, ANSI C62.41, ANSI C63.4, NEMA 4, CSA C22.2