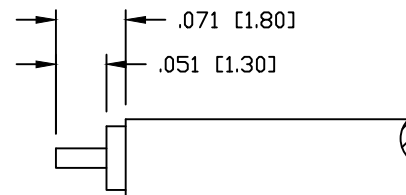
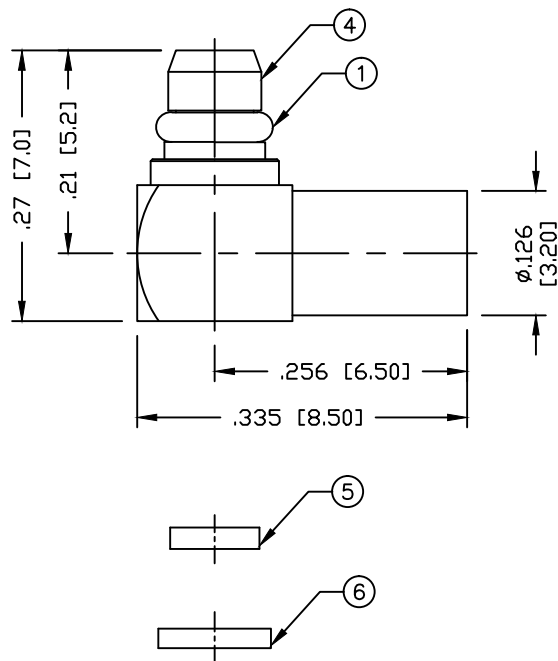


PART NO.

**RMX-9010-1SR1**

REV	DESCRIPTION	DWN	DATE	APPROVED
-	ENGINEERING RELEASE	CZS	08/11/16	JDMc



RECOMMENDED STRIPPING DIMENSIONS

PIN TO BE SOLDER

SPECIFICATIONS:

IMPEDANCE: 50 Ohms  
 FREQUENCY RANGE: 0-6 GHz  
 WORKING VOLTAGE: 170 V rms @ sea level  
 TEMPERATURE RANGE: -65°C TO 165°C  
 INSULATION RESISTANCE: 1k M Ohms min.  
 FOR .085 SEMI RIGID, RG-405/U & BELDEN 1671A CABLE

#	DESCRIPTION	QTY	MATERIAL	FINISH
6	PRESS CAP	1	BRASS	GOLD, $3\mu^{\prime\prime}$
5	INSULATOR	1	PTFE	---
4	RETAINING RING	1	Be.Cu.	GOLD, $3\mu^{\prime\prime}$
3	PIN	1	BRASS	GOLD, $30\mu^{\prime\prime}$
2	INSULATOR	1	PTFE	---
1	BODY	1	BRASS	GOLD, $3\mu^{\prime\prime}$

CUSTOMER  
OUTLINE DRAWINGALL DIMENSIONS  
ARE REFERENCE ONLYUNLESS OTHERWISE SPECIFIED:  
DIMENSIONS ARE IN INCHES  
AND [MILLIMETERS]

DRAWN	C. ZUNIGA	8/11/16
CHECKED		
ORJ DRAWN	C. ZUNIGA	08/11/16

**RoHS  
COMPLIANT**

PROPRIETARY AND CONFIDENTIAL  
 THIS DRAWING CONTAINS  
 INFORMATION PROPRIETARY TO  
 RF INDUSTRIES. ANY  
 UNAUTHORIZED USE OF THIS  
 DRAWING IS EXPRESSLY  
 PROHIBITED WITHOUT WRITTEN  
 PERMISSION FROM RF  
 INDUSTRIES. ANY VIOLATION IS  
 PUNISHABLE UNDER U.S.  
 COPYRIGHT LAWS.

**RFconnectors**  
 DIVISION OF RF INDUSTRIES, LTD. (858) 549-6345 FAX  
 7610 MIRAMAR RD.  
 SAN DIEGO, CA 92126  
 (858) 549-6340

**MMCX PLUG**

RIGHT ANGLE FOR SEMI RIGID CABLE

SIZE	CABLE GROUP	DWG NO.	REV
A	SR1	<b>RMX-9010-1SR1</b>	---
SCALE:	ENGINEERING ID:	000000	SHEET 1 OF 1
NTS			