

## SUMMARY

### # Wires

Coax 1



*Image is for illustrative purpose only*

Series 2S  
Termination type No contacts / Accessory  
IP rating 0  
AWG wire size 0.00 - 0.00  
Cable Ø 0.00 - 0.00 mm  
Status active

### Download

[Request a quote](#)

[Catalog](#)

## TECHNICAL DETAILS

### Mechanics

Shell Style/Model GBA\*: Locking washer  
Keying No keying  
Housing Material Brass (chrome plated [SAE AMS 2460]) shell and collet nut, gold plated [ISO 27874] latch (plug) or gold earthing crown (receptacle)  
Weight .24 g

### Performance

Configuration  
Insulator  
Rated Current 15 Amps

### Specifications

Cable type: RG 58 C/U, RG 302 /U, RG 400 /U, 2YCCY, RG 59 B/U, RG 223 /U, HF-5408

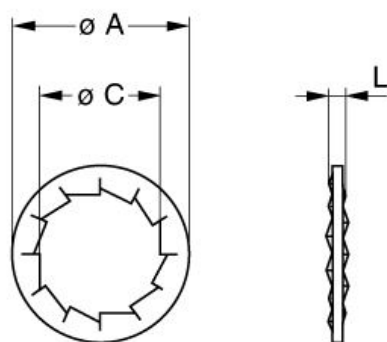
### Others

Temp (min / max): -55°C / +250°C  
Humidity (max): <=95% [at 60 deg C / 140 F]  
Vibration: 15 g [10 Hz - 2000 Hz]  
Shock Resistance: 100 g [ 6 ms]

*LEMO products and services are provided "as is". LEMO makes no warranties or representations with regard to LEMO product & services or use of them, express, implied or statutory, including for accuracy, completeness, or security. The user is fully responsible for his products and applications using LEMO components.*

Climatical Category: 50/175/21  
Shielding (min): 75 dB (10 MHz)  
Shielding (min): 40 dB (1 GHz)

## DRAWINGS



**No keying**

### Dimensions

|     | A    | C    | L    |
|-----|------|------|------|
| mm. | 19.5 | 15.1 | 1.2  |
| in. | 0,77 | 0,59 | 0,05 |

## RECOMMENDED BY LEMO

### Tools

*LEMO products and services are provided "as is". LEMO makes no warranties or representations with regard to LEMO product & services or use of them, express, implied or statutory, including for accuracy, completeness, or security. The user is fully responsible for his products and applications using LEMO components.*