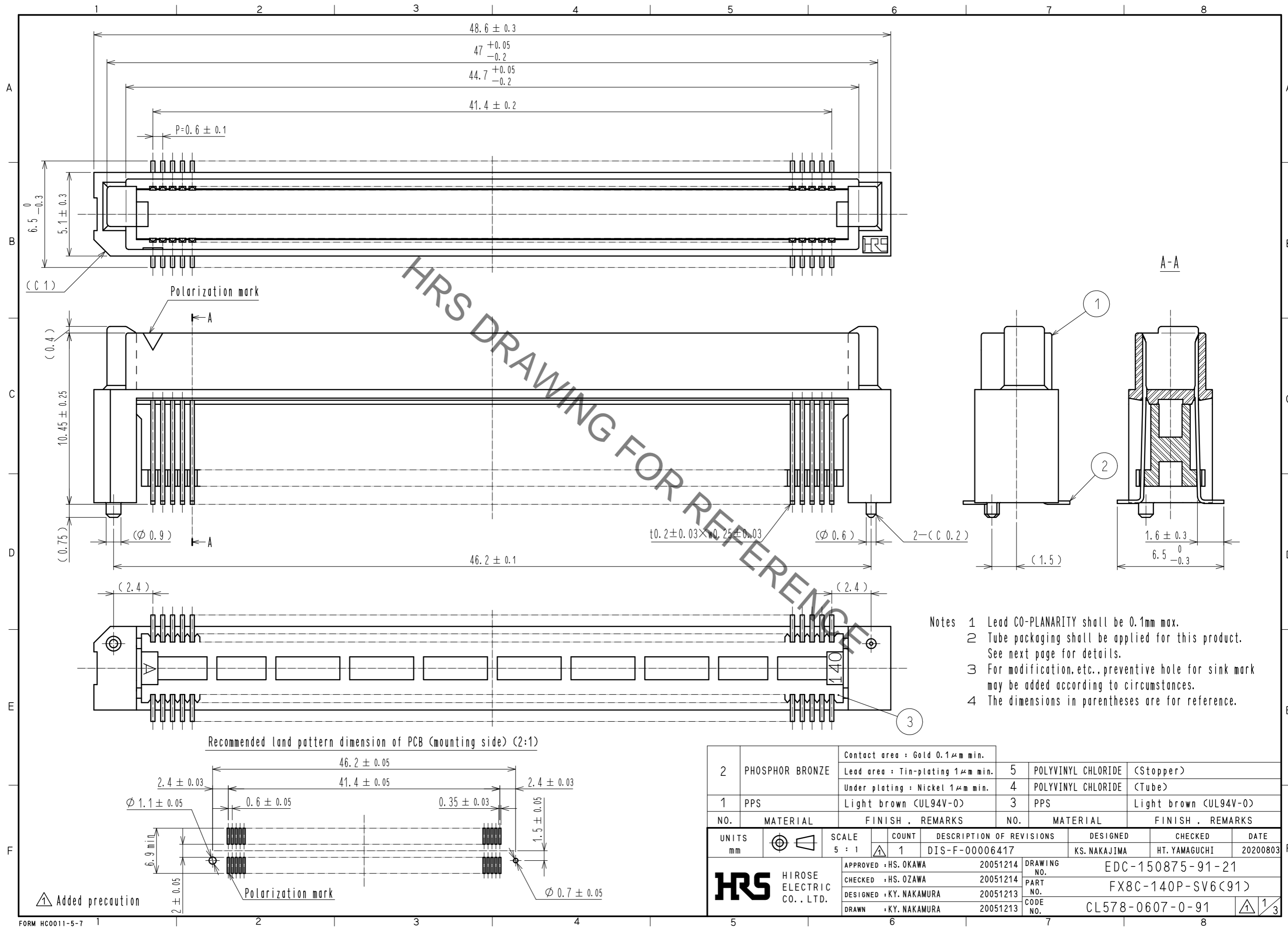
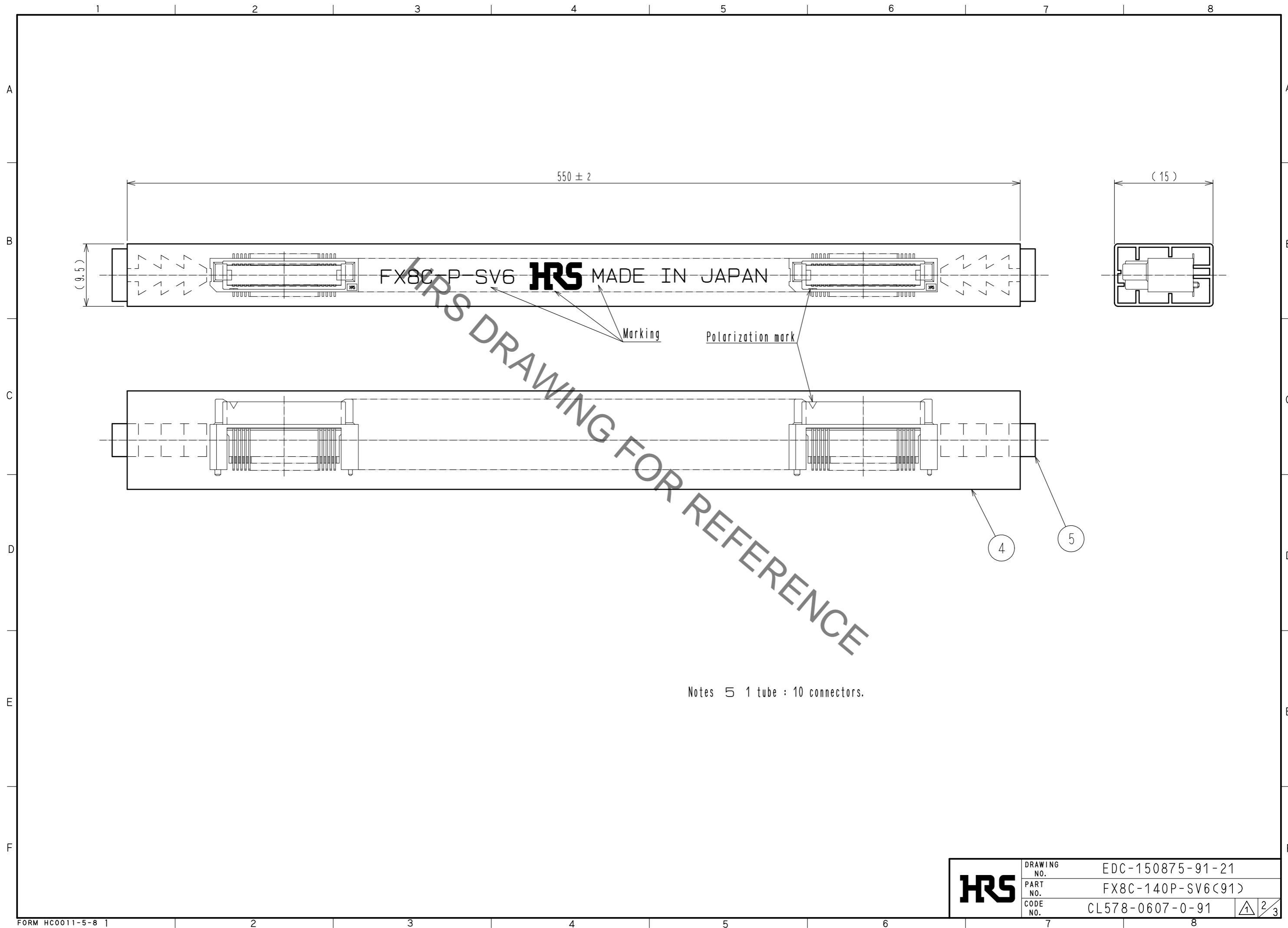


Apr.1.2023 Copyright 2023 HIROSE ELECTRIC CO., LTD. All Rights Reserved.
In case of consideration for using Automotive equipment / device which demand high reliability, kindly contact our sales window correspondents.



2	PHOSPHOR BRONZE	Contact area : Gold 0.1 μ m min.	5	POLYVINYL CHLORIDE	(Stopper)
		Lead area : Tin-plating 1 μ m min.	4	POLYVINYL CHLORIDE	(Tube)
1	PPS	Under plating : Nickel 1 μ m min.	3	PPS	Light brown (UL94V-0)
		Light brown (UL94V-0)			
NO.	MATERIAL	FINISH . REMARKS	NO.	MATERIAL	FINISH . REMARKS
UNITS		SCALE	COUNT	DESCRIPTION OF REVISIONS	
mm		5 : 1	1	DIS-F-00006417	
APPROVED : HS. OKAWA			20051214	DESIGNED	
CHECKED : HS. OZAWA			20051214	KS. NAKAJIMA	
DESIGNED : KY. NAKAMURA			20051213	CHECKED	
DRAWN : KY. NAKAMURA			20051213	HT. YAMAGUCHI	
DATE			20200803		
DRAWING NO.			EDC-150875-91-21		
PART NO.			FX8C-140P-SV6(91)		
CODE NO.			CL578-0607-0-91		
HRS			1/3		

Apr.1.2023 Copyright 2023 HIROSE ELECTRIC CO., LTD. All Rights Reserved.
In case of consideration for using Automotive equipment / device which demand high reliability, kindly contact our sales window correspondents.



HRS	DRAWING NO.	EDC-150875-91-21
	PART NO.	FX8C-140P-SV6(91)
	CODE NO.	CL578-0607-0-91

2/3

In case of consideration for using Automotive equipment / device which demand high reliability, kindly contact our sales window correspondents.

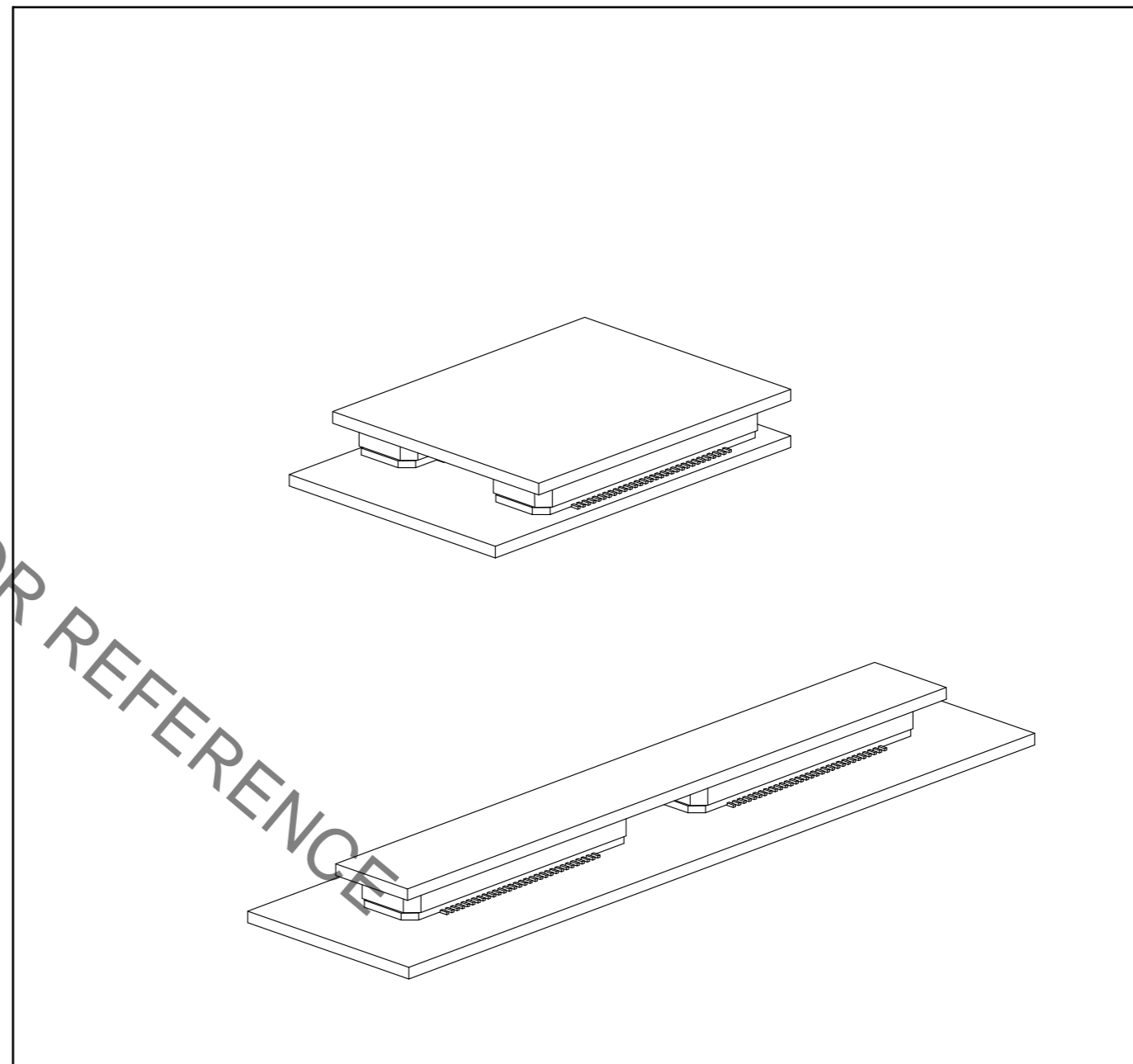
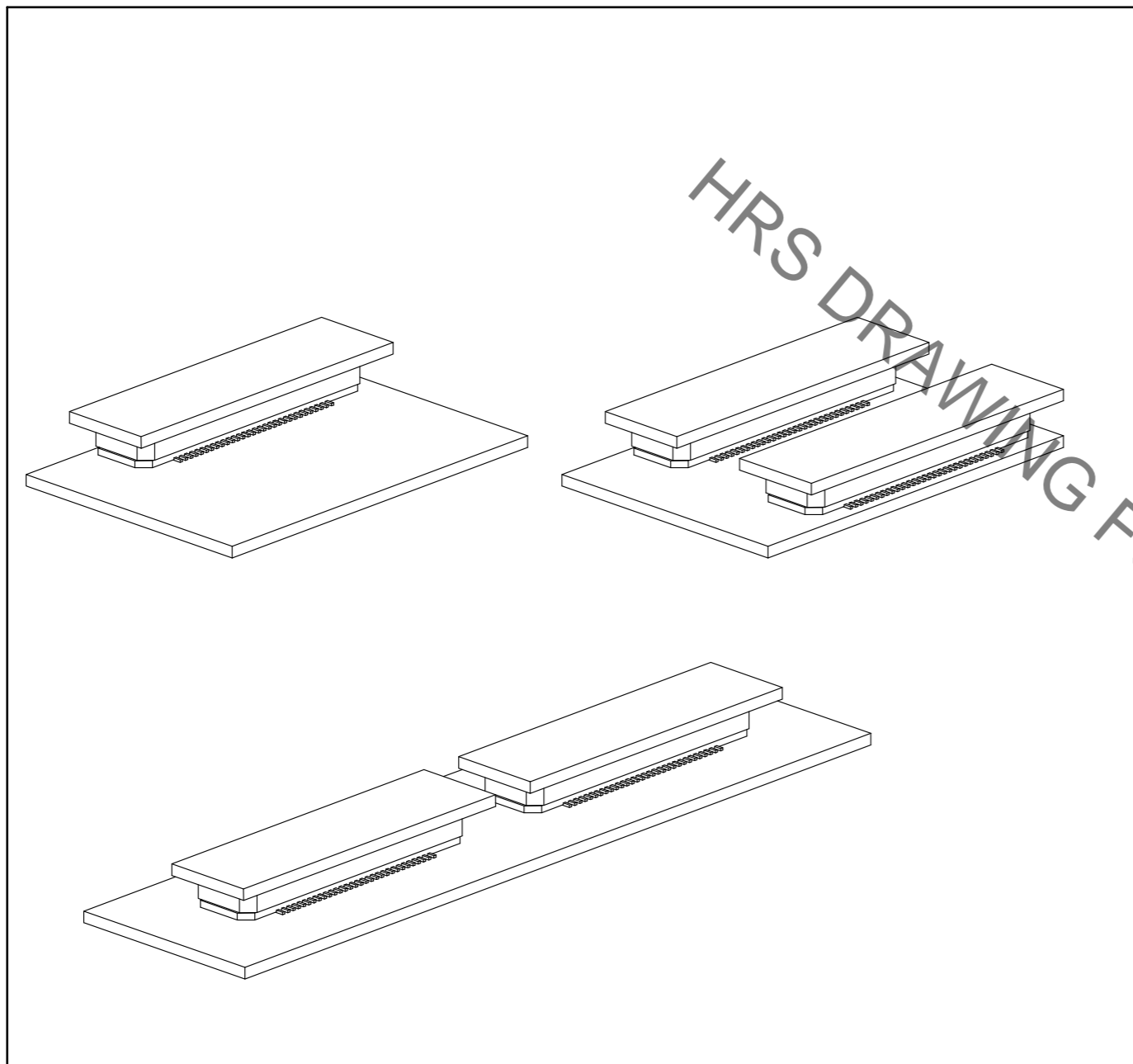
Apr.1.2023 Copyright 2023 HIROSE ELECTRIC CO., LTD. All Rights Reserved.

【 Precaution 】

When a board with multiple connectors mounted is mated, the connector may be damaged or deformed.
Please divide one side of the board so only one connector is mated per board.

OK

NG



HRS DRAWING FOR REFERENCE

HRS	DRAWING NO.	EDC-150875-91-21
	PART NO.	FX8C-140P-SV6(91)
	CODE NO.	CL578-0607-0-91
		3/3