



ANATECH ELECTRONICS INC
RF & Microwave Filters & Products

100 MHz Saw Filter

Part Number: AM100S246

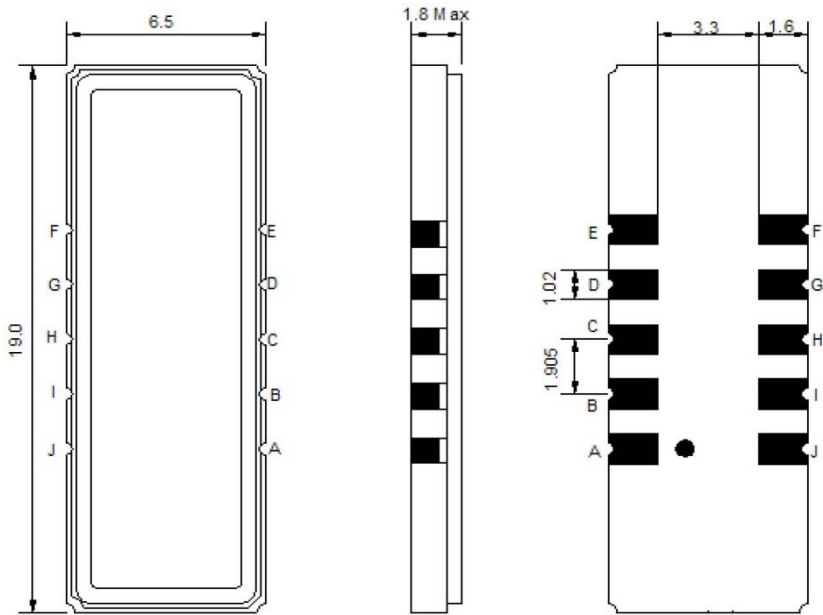


Parameters Description	Unit	Minimum	Typical	Maximum
Center Frequency (Fo)	MHz	99.91	100.00	100.09
Insertion Loss at Fo	dB	-	13.7	15.0
Passband Ripple Variation	dB	-	0.80	1.5
Group Delay Ripple	nsec	-	250	500
Absolute Delay at Fo	usec	-	2.4	-
Phase Linearity	Deg	-	3.0	6.0
Bandwidth at -1.0 dB	MHz	0.30	0.34	-
Bandwidth at -3.0 dB	MHz	0.47	0.55	-
Bandwidth at -40.0 dB	MHz	-	1.38	1.45
Ultimate Rejection	dB	45	55	-
Substrate Material	Qz			

Parameters Description	Unit	Minimum	Typical	Maximum
Ambient Temperature	°C	-	+25	-
Operation Temperature Range	°C	-30	-	+80
Storage Temperature Range	°C	-40	-	+85
Maximum DC Voltage	V	-	-	10
Maximum Input Power	dBm	-	-	10
Source Impedance (Single Ended) ₁	Ω	-	50	-
Load Impedance (Single Ended) ₁	Ω	-	50	-
Package Size and Type	19.0 x 6.5 x 1.8 mm		X	

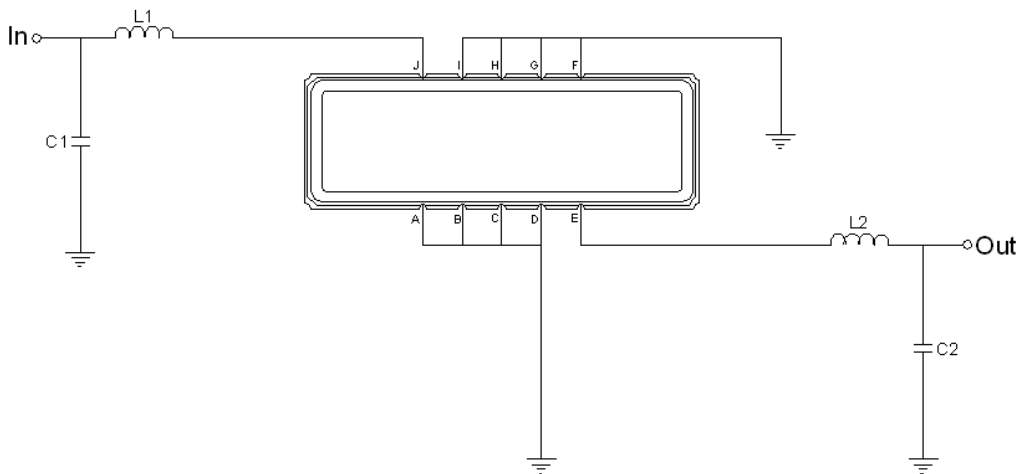


Outline Drawing:



Pin Description	
Ground	A B C D F G H I
Input	J
Output	E

Testing Environment:



Pin Description	
Ground	L1 = 162 nH C1 = 18 pF
Input	L2 = 132 nH C2 = 39 pF
Source/Load Impedance	50 Ω

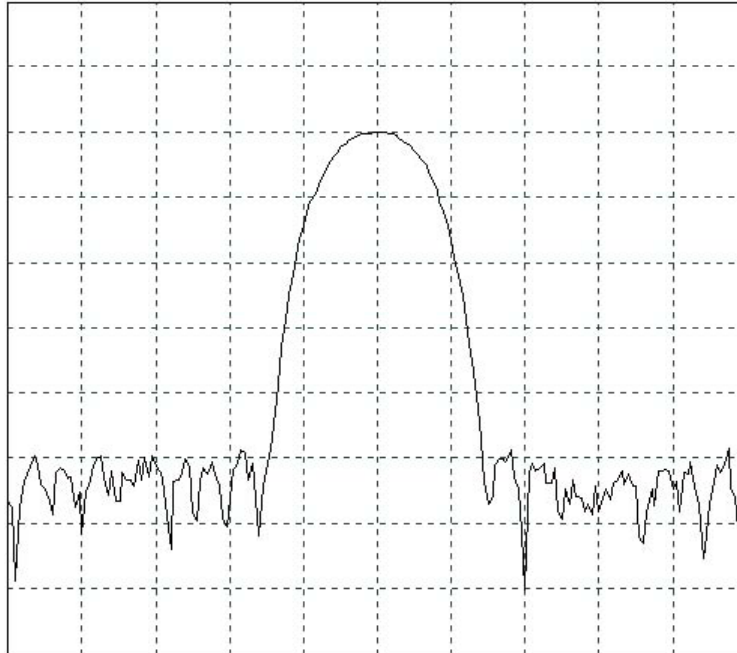


100 MHz Saw Filter

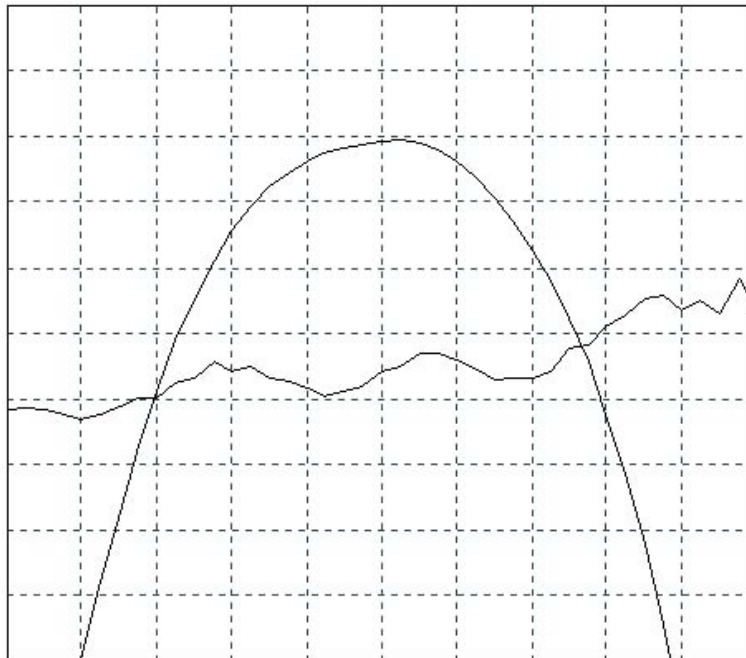
Part Number: AM100S246



Frequency Response:



Horizontal: 0.5 MHz/Div
Vertical: 10 dB/Div



Horizontal: 0.1 MHz/Div
Vertical: 1 dB/Div
Vertical: 100ns/Div