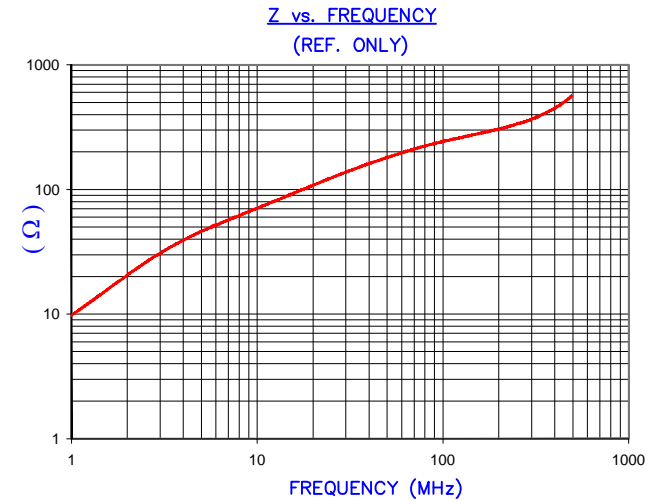


DETAIL "A"
CHAMFER
SCALE=5:1

NOTES: UNLESS OTHERWISE SPECIFIED

- PARTS MUST BE TUMBLED, BURNISHED OR DEBURRED TO REMOVE ALL BURRS AND SHARP EDGES.
- COSMETIC SPECIFICATION REFER TO WI-QA-038.

IMPEDANCE (Z)			
Frequency	25 MHz	100 MHz	300 MHz
Nominal (REF)	130 Ω	245 Ω	360 Ω
Minimum	- Ω	196 Ω	- Ω

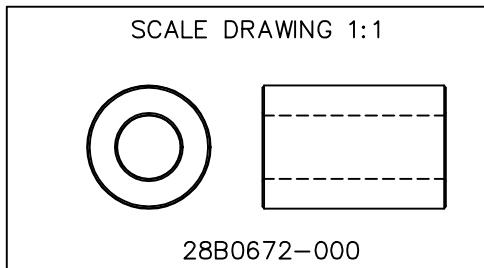


AGILENT E4991A Impedance/Material Analyzer
HP 16092A Test Fixture

FERRITE CORE DIMENSIONS (SPEC): mm/inches

A	17.07 [.672]	+0.25 [.010] -0.36 [.014]
B	8.76 [.345]	+ 0.20 [.008]
C	25.40 [1.000]	+ 0.76 [.030]

WEIGHT/1000 21.15 kgs [46.62 Lbs]



DIMENSIONS ARE IN mm [INCHES].				This print is the property of Laird Tech. and is loaned in confidence subject to return upon request and with the understanding that no copies shall be made without the written consent of Laird Tech. All rights to design or invention are reserved.		Laird	
J	UPDATE THE LOGO	05/13/15	QIU	PROJECT/PART NUMBER:	REV	PART TYPE:	DRAWN BY:
H	UPDATE TEMPALTE	12/25/09	Jcai	28B0672-000	J	FERRITE CNZ CORE	DJB
G	CHANGE NOTE 1, UPDATE PRINT FORMAT UPDATE Z SPECS ADD CURVE	03/03/03	JRK	DATE:	SCALE:	MATERIAL:	
F	UPDATE FORMAT ADD KGS TO WEIGHT UPDATE Z SPECS	05/02/02	JRK	05/28/92	2 : 1	FERRITE	
REV	DESCRIPTION	DATE	INT	CAD #	TOOL #		
				28B0672-000-J	B0672		