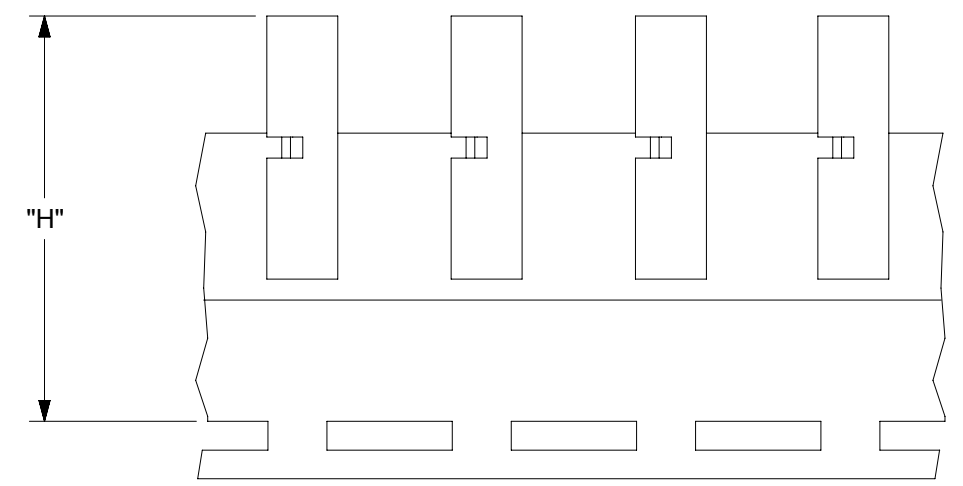
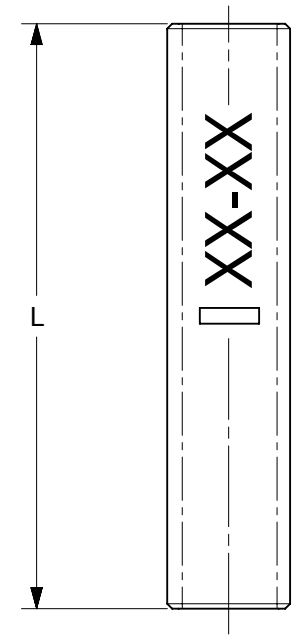
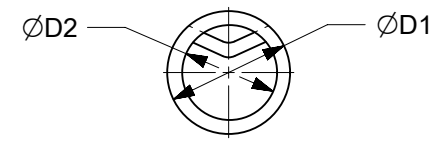


MATERIAL NO.	ENGINEERING NO.	D1 MAX	D2 MAX	L MAX	H NOMINAL	WIRE RANGE AWG	DESCRIPTION
192030384	19203-0384	.14/3.6	.05/1.2	.627/15.92	-----	22-18	LOOSE
192030385	19203-0385	.17/4.3	.07/1.9	.627/15.92	-----	16-14	LOOSE
192030386	C-S-146 (P)	.23/5.8	.12/3.0	.627/15.92	-----	12-10	LOOSE
192030523	19203-0523	.14/3.6	.05/1.2	.627/15.92	1.218/30.94	22-18	TAPE
192030479	19203-0479	.17/4.3	.07/1.9	.627/15.92	1.218/30.94	16-14	TAPE
192030480	19203-0480	.23/5.8	.12/3.0	.627/15.92	1.218/30.94	12-10	TAPE

(A2)



PARTS ON TAPE

- NOTES:
1. MATERIAL: STEEL .031/0.80 THICK REF.
  2. FINISH: NICKEL PLATED WITH OPTIONAL COPPER FLASH UNDERPLATING, IS ALLOWED FOR IMPROVED ADHESION.
  3. PART IS ROHS COMPLIANT.

(A2)

FUNCTIONAL SYMBOLS	THIS DRAWING CONTAINS INFORMATION THAT IS PROPRIETARY TO MOLEX ELECTRONIC TECHNOLOGIES, LLC AND SHOULD NOT BE USED WITHOUT WRITTEN PERMISSION									
	DIMENSION UNITS		SCALE		CURRENT REV DESC: REMASTERED IN ECTR AND UPDATED NOTE				<b>molex</b>	
	IN/MM		1:1							
	GENERAL TOLERANCES (UNLESS SPECIFIED)									
DIVISIONAL SYMBOLS	4 PLACES		±		EC NO: 708789		2022/05/10		PRODUCT CUSTOMER DRAWING	
	3 PLACES		±		DRWN: PAWANC		2022/06/01			
	2 PLACES		±		CHKD: DMYRICK		2022/06/02		DOCUMENT NUMBER	
	1 PLACE		±		APPR: JMACNEIL		2022/06/02		SD-19203-015	
0 PLACES		±		INITIAL REVISION:		2005/04/07		DOC TYPE		
ANGULAR TOL		±	°	DRWN: DMYRICK		2005/04/07		DOC PART		
DRAFT WHERE APPLICABLE MUST REMAIN WITHIN DIMENSIONS		THIRD ANGLE PROJECTION		DRAWING		SERIES		REVISION		
		B-SIZE		19203		MATERIAL NUMBER		SHEET NUMBER		
		SEE CHART		GENERAL MARKET		1 OF 1				