



Cable entry with foamed-in seal, Mounting type: Screws, Length: 81 mm, Width: 70 mm, IP 66, Colour: Black

RAL: 9005

Business data

| | |
|--|---------------|
| Article number | 28506.4 |
| Article name | KDS-SR 1-4 BK |
| GTIN (EAN) | 4044211210823 |
| Packaging unit | 1 |
| Quantity unit | PC |
| Weight per piece (not including packaging) | 40.4 g |
| Weight per piece (including packaging) | 59.4 g |
| Unit of weight | G |
| Customs number | 39259020 |
| Country of origin | DE |
| Product description | Cable Entry |
| Colour | Black |

Technical data

Dimensions

| | |
|-----------------------------|---------|
| Length | 81 mm |
| Length of wall cutout | 46 mm |
| Width | 70 mm |
| Width of wall cutout | 46 mm |
| Height | 19.6 mm |
| Installation height | 19.6 mm |
| Diameter of the screw holes | 5.5 mm |

Materials

| | |
|---------------------------|-----------------------------------|
| Material | Polyamide 6.6 |
| Glass-fibre reinforced | ✓ |
| Flammability class UL 94 | V-0 |
| Working temperature, min. | -40 °C |
| Working temperature, max. | 120 °C |
| Sealing material | Polyurethane-based |
| Type of seal | Sealing and moulded flexible foam |
| Halogen-free | ✓ |
| Silicone-free | ✓ |

Further technical data

| | |
|-----------------------------|-----------------------------|
| Mounting type | Screws |
| Degree of protection | IP66 |
| NEMA Type | 1, 12, 4x (indoor use only) |
| Number of screw holes | 4 |
| Fixing screws | M 5 (ISO 4762 / DIN 912) |
| Torque of the fixing screws | 3 Nm |

Environmental Product Compliance

| | |
|--------------------------------|------------|
| REACH Conform | yes |
| REACH Reference date | 2023-01-17 |
| REACH Candidate Substance Note | No |
| RoHS Conform | yes |

28506.4 KDS-SR 1-4 BK

Approvals

cUL Recognized

| | |
|-----------------|-----------------|
| cUL approval | C22.2 No. 14-18 |
| cUL File Number | E489821 |
| cUL Recognized | 1 |

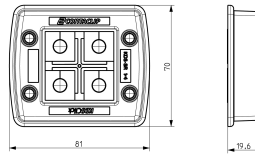
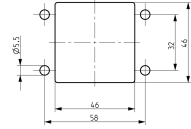
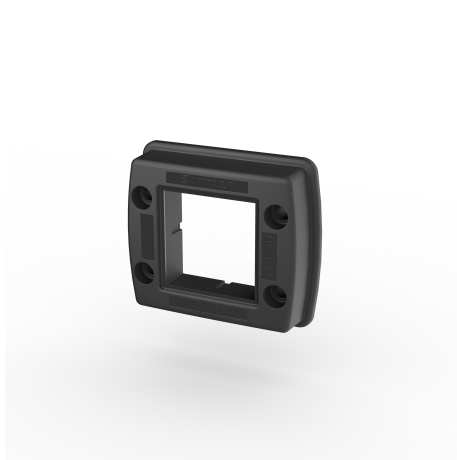
UL Recognized

| | |
|----------------|-----------------------------|
| UL approval | UL 508A |
| UL File Number | E489821 |
| UL Recognized | 1 |
| UL Type Rating | 1, 12, 4x (indoor use only) |

German Lloyd approval

| | |
|---------------------------|--|
| DNV GL Certificate number | TAE00003V7 |
| DNV GL Location Classes | Temperature: -40°C to 120°C, Humidity: B, Vibration: B, Ingress protection: IP66 |
| DNV GL approval granted | 1 |

Media



28506.4 KDS-SR 1-4 BK

Accessories

Inlays

Cable entry, Inlay, Mounting type: Plug in, IP 66, Colour: Black



| Article number | Article name | GTIN (EAN) | Packaging unit |
|-------------------------|----------------|---------------|----------------|
| 28516.4 | KDS-Inlay 1 BK | 4044211210847 | 5 ST |

Cable entry, Inlay, Mounting type: Plug in, IP 66, Colour: Black



| Article number | Article name | GTIN (EAN) | Packaging unit |
|-------------------------|----------------|---------------|----------------|
| 28517.4 | KDS-Inlay 2 BK | 4044211210854 | 5 ST |

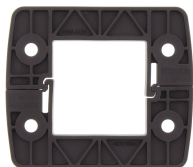
Cable entry, Inlay, Mounting type: Plug in, IP 66, Colour: Black



| Article number | Article name | GTIN (EAN) | Packaging unit |
|-------------------------|----------------|---------------|----------------|
| 28518.4 | KDS-Inlay 4 BK | 4044211210861 | 5 ST |

Locking frame

Inner locking frame, Length: 80 mm, Height: 11.5 mm, Colour: Black



| Article number | Article name | GTIN (EAN) | Packaging unit |
|-------------------------|----------------|---------------|----------------|
| 28507.4 | KDS-IVR 1-4 BK | 4044211210830 | 10 ST |

Big Seals

Seal, Mounting type: Plug in, Length x width: 42.8 mm, Max. cable diameter: 20 mm, IP 66, Colour: Black



| Article number | Article name | GTIN (EAN) | Packaging unit |
|-------------------------|------------------|---------------|----------------|
| 28540.4 | KDS-DEG 19-20 BK | 4044211215354 | 10 ST |

Seal, Mounting type: Plug in, Length x width: 42.8 mm, Max. cable diameter: 33 mm, IP 66, Colour: Black



| Article number | Article name | GTIN (EAN) | Packaging unit |
|-------------------------|------------------|---------------|----------------|
| 28601.4 | KDS-DEG 32-33 BK | 4044211215613 | 10 ST |

28506.4 KDS-SR 1-4 BK

Big Seals



Seal dummy, Mounting type: Plug in, Length x width: 42.8 mm, IP 66, Colour: Black

| Article number | Article name | GTIN (EAN) | Packaging unit |
|-------------------------|--------------|---------------|----------------|
| 28534.4 | KDS-DEG/B BK | 4044211215255 | 10 ST |



Seal, Mounting type: Plug in, Length x width: 42.8 mm, Max. cable diameter: 15 mm, IP 66, Colour: Black

| Article number | Article name | GTIN (EAN) | Packaging unit |
|-------------------------|------------------|---------------|----------------|
| 28535.4 | KDS-DEG 14-15 BK | 4044211209995 | 10 ST |



Seal, Mounting type: Plug in, Length x width: 42.8 mm, Max. cable diameter: 16 mm, IP 66, Colour: Black

| Article number | Article name | GTIN (EAN) | Packaging unit |
|-------------------------|------------------|---------------|----------------|
| 28536.4 | KDS-DEG 15-16 BK | 4044211215279 | 10 ST |



Seal, Mounting type: Plug in, Length x width: 42.8 mm, Max. cable diameter: 17 mm, IP 66, Colour: Black

| Article number | Article name | GTIN (EAN) | Packaging unit |
|-------------------------|------------------|---------------|----------------|
| 28537.4 | KDS-DEG 16-17 BK | 4044211215293 | 10 ST |



Seal, Mounting type: Plug in, Length x width: 42.8 mm, Max. cable diameter: 18 mm, IP 66, Colour: Black

| Article number | Article name | GTIN (EAN) | Packaging unit |
|-------------------------|------------------|---------------|----------------|
| 28538.4 | KDS-DEG 17-18 BK | 4044211215316 | 10 ST |



Seal, Mounting type: Plug in, Length x width: 42.8 mm, Max. cable diameter: 24 mm, IP 66, Colour: Black

| Article number | Article name | GTIN (EAN) | Packaging unit |
|-------------------------|------------------|---------------|----------------|
| 28544.4 | KDS-DEG 23-24 BK | 4044211215439 | 10 ST |



Seal, Mounting type: Plug in, Length x width: 42.8 mm, Max. cable diameter: 20 mm, IP 66, Colour: Grey

| Article number | Article name | GTIN (EAN) | Packaging unit |
|-------------------------|------------------|---------------|----------------|
| 28581.6 | KDS-DEG 19-20 GR | 4044211215347 | 10 ST |

28506.4 KDS-SR 1-4 BK

Big Seals



Seal, Mounting type: Plug in, Length x width: 42.8 mm, Max. cable diameter: 21 mm, IP 66, Colour: Grey

| Article number | Article name | GTIN (EAN) | Packaging unit |
|----------------|------------------|---------------|----------------|
| <u>28582.6</u> | KDS-DEG 20-21 GR | 4044211215361 | 10 ST |



Seal, Mounting type: Plug in, Length x width: 42.8 mm, Max. cable diameter: 22 mm, IP 66, Colour: Grey

| Article number | Article name | GTIN (EAN) | Packaging unit |
|----------------|------------------|---------------|----------------|
| <u>28583.6</u> | KDS-DEG 21-22 GR | 4044211215385 | 10 ST |



Seal, Mounting type: Plug in, Length x width: 42.8 mm, Max. cable diameter: 23 mm, IP 66, Colour: Grey

| Article number | Article name | GTIN (EAN) | Packaging unit |
|----------------|------------------|---------------|----------------|
| <u>28584.6</u> | KDS-DEG 22-23 GR | 4044211215408 | 10 ST |



Seal, Mounting type: Plug in, Length x width: 42.8 mm, Max. cable diameter: 25 mm, IP 66, Colour: Black

| Article number | Article name | GTIN (EAN) | Packaging unit |
|----------------|------------------|---------------|----------------|
| <u>28545.4</u> | KDS-DEG 24-25 BK | 4044211215453 | 10 ST |



Seal, Mounting type: Plug in, Length x width: 42.8 mm, Max. cable diameter: 26 mm, IP 66, Colour: Black

| Article number | Article name | GTIN (EAN) | Packaging unit |
|----------------|------------------|---------------|----------------|
| <u>28546.4</u> | KDS-DEG 25-26 BK | 4044211215460 | 10 ST |



Seal, Mounting type: Plug in, Length x width: 42.8 mm, Max. cable diameter: 27 mm, IP 66, Colour: Black

| Article number | Article name | GTIN (EAN) | Packaging unit |
|----------------|------------------|---------------|----------------|
| <u>28547.4</u> | KDS-DEG 26-27 BK | 4044211215491 | 10 ST |

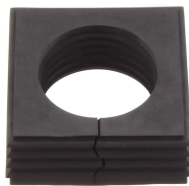


Seal, Mounting type: Plug in, Length x width: 42.8 mm, Max. cable diameter: 28 mm, IP 66, Colour: Black

| Article number | Article name | GTIN (EAN) | Packaging unit |
|----------------|------------------|---------------|----------------|
| <u>28548.4</u> | KDS-DEG 27-28 BK | 4044211215514 | 10 ST |

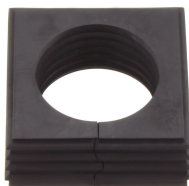
28506.4 KDS-SR 1-4 BK

Big Seals



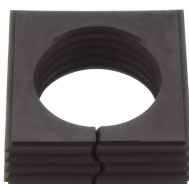
Seal, Mounting type: Plug in, Length x width: 42.8 mm, Max. cable diameter: 29 mm, IP 66, Colour: Black

| Article number | Article name | GTIN (EAN) | Packaging unit |
|----------------|------------------|---------------|----------------|
| <u>28549.4</u> | KDS-DEG 28-29 BK | 4044211215538 | 10 ST |



Seal, Mounting type: Plug in, Length x width: 42.8 mm, Max. cable diameter: 30 mm, IP 66, Colour: Black

| Article number | Article name | GTIN (EAN) | Packaging unit |
|----------------|------------------|---------------|----------------|
| <u>28550.4</u> | KDS-DEG 29-30 BK | 4044211215552 | 10 ST |



Seal, Mounting type: Plug in, Length x width: 42.8 mm, Max. cable diameter: 31 mm, IP 66, Colour: Black

| Article number | Article name | GTIN (EAN) | Packaging unit |
|----------------|------------------|---------------|----------------|
| <u>28551.4</u> | KDS-DEG 30-31 BK | 4044211215576 | 10 ST |



Seal, Mounting type: Plug in, Length x width: 42.8 mm, Max. cable diameter: 32 mm, IP 66, Colour: Black

| Article number | Article name | GTIN (EAN) | Packaging unit |
|----------------|------------------|---------------|----------------|
| <u>28552.4</u> | KDS-DEG 31-32 BK | 4044211215590 | 10 ST |



Seal, Mounting type: Plug in, Length x width: 42.8 mm, Max. cable diameter: 18 mm, IP 66, Colour: Grey

| Article number | Article name | GTIN (EAN) | Packaging unit |
|----------------|------------------|---------------|----------------|
| <u>28579.6</u> | KDS-DEG 17-18 GR | 4044211215309 | 10 ST |



Seal, Mounting type: Plug in, Length x width: 42.8 mm, Max. cable diameter: 19 mm, IP 66, Colour: Grey

| Article number | Article name | GTIN (EAN) | Packaging unit |
|----------------|------------------|---------------|----------------|
| <u>28580.6</u> | KDS-DEG 18-19 GR | 4044211215323 | 10 ST |



Seal dummy, Mounting type: Plug in, Length x width: 42.8 mm, IP 66, Colour: Grey

| Article number | Article name | GTIN (EAN) | Packaging unit |
|----------------|--------------|---------------|----------------|
| <u>28575.6</u> | KDS-DEG/B GR | 4044211215248 | 10 ST |

28506.4 KDS-SR 1-4 BK

Big Seals



Seal, Mounting type: Plug in, Length x width: 42.8 mm, Max. cable diameter: 15 mm, IP 66, Colour: Grey

| Article number | Article name | GTIN (EAN) | Packaging unit |
|-------------------------|------------------|---------------|----------------|
| 28576.6 | KDS-DEG 14-15 GR | 4044211209971 | 10 ST |



Seal, Mounting type: Plug in, Length x width: 42.8 mm, Max. cable diameter: 16 mm, IP 66, Colour: Grey

| Article number | Article name | GTIN (EAN) | Packaging unit |
|-------------------------|------------------|---------------|----------------|
| 28577.6 | KDS-DEG 15-16 GR | 4044211215262 | 10 ST |



Seal, Mounting type: Plug in, Length x width: 42.8 mm, Max. cable diameter: 17 mm, IP 66, Colour: Grey

| Article number | Article name | GTIN (EAN) | Packaging unit |
|-------------------------|------------------|---------------|----------------|
| 28578.6 | KDS-DEG 16-17 GR | 4044211215286 | 10 ST |



Seal, Mounting type: Plug in, Length x width: 42.8 mm, Max. cable diameter: 32 mm, IP 66, Colour: Grey

| Article number | Article name | GTIN (EAN) | Packaging unit |
|-------------------------|------------------|---------------|----------------|
| 28593.6 | KDS-DEG 31-32 GR | 4044211215583 | 10 ST |



Seal, Mounting type: Plug in, Length x width: 42.8 mm, Max. cable diameter: 33 mm, IP 66, Colour: Grey

| Article number | Article name | GTIN (EAN) | Packaging unit |
|-------------------------|------------------|---------------|----------------|
| 28594.6 | KDS-DEG 32-33 GR | 4044211215606 | 10 ST |



Seal, Mounting type: Plug in, Length x width: 42.8 mm, Max. cable diameter: 34 mm, IP 66, Colour: Black

| Article number | Article name | GTIN (EAN) | Packaging unit |
|-------------------------|------------------|---------------|----------------|
| 28730.4 | KDS-DEG 33-34 BK | 4044211220969 | 10 ST |



Seal, Mounting type: Plug in, Length x width: 42.8 mm, Max. cable diameter: 34 mm, IP 66, Colour: Grey

| Article number | Article name | GTIN (EAN) | Packaging unit |
|-------------------------|------------------|---------------|----------------|
| 28731.6 | KDS-DEG 33-34 GR | 4044211220976 | 10 ST |

28506.4 KDS-SR 1-4 BK

Big Seals



Seal, Mounting type: Plug in, Length x width: 42.8 mm, Max. cable diameter: 35 mm, IP 66, Colour: Black

| Article number | Article name | GTIN (EAN) | Packaging unit |
|-------------------------|------------------|---------------|----------------|
| 28732.4 | KDS-DEG 34-35 BK | 4044211220983 | 10 ST |



Seal, Mounting type: Plug in, Length x width: 42.8 mm, Max. cable diameter: 35 mm, IP 66, Colour: Grey

| Article number | Article name | GTIN (EAN) | Packaging unit |
|-------------------------|------------------|---------------|----------------|
| 28733.6 | KDS-DEG 34-35 GR | 4044211220990 | 10 ST |



Seal, Mounting type: Plug in, Length x width: 42.8 mm, Max. cable diameter: 23 mm, IP 66, Colour: Black

| Article number | Article name | GTIN (EAN) | Packaging unit |
|-------------------------|------------------|---------------|----------------|
| 28543.4 | KDS-DEG 22-23 BK | 4044211215415 | 10 ST |



Seal, Mounting type: Plug in, Length x width: 42.8 mm, Max. cable diameter: 24 mm, IP 66, Colour: Black

| Article number | Article name | GTIN (EAN) | Packaging unit |
|-------------------------|-------------------|---------------|----------------|
| 28554.4 | KDS-DEG/K 7-24 BK | 4044211216108 | 10 ST |



Seal, Mounting type: Plug in, Length x width: 42.8 mm, Max. cable diameter: 24 mm, IP 66, Colour: Grey

| Article number | Article name | GTIN (EAN) | Packaging unit |
|-------------------------|------------------|---------------|----------------|
| 28585.6 | KDS-DEG 23-24 GR | 4044211215422 | 10 ST |



Seal, Mounting type: Plug in, Length x width: 42.8 mm, Max. cable diameter: 25 mm, IP 66, Colour: Grey

| Article number | Article name | GTIN (EAN) | Packaging unit |
|-------------------------|------------------|---------------|----------------|
| 28586.6 | KDS-DEG 24-25 GR | 4044211215446 | 10 ST |



Seal, Mounting type: Plug in, Length x width: 42.8 mm, Max. cable diameter: 26 mm, IP 66, Colour: Grey

| Article number | Article name | GTIN (EAN) | Packaging unit |
|-------------------------|------------------|---------------|----------------|
| 28587.6 | KDS-DEG 25-26 GR | 4044211215477 | 10 ST |

28506.4 KDS-SR 1-4 BK

Big Seals



Seal, Mounting type: Plug in, Length x width: 42.8 mm, Max. cable diameter: 27 mm, IP 66, Colour: Grey

| Article number | Article name | GTIN (EAN) | Packaging unit |
|----------------|------------------|---------------|----------------|
| <u>28588.6</u> | KDS-DEG 26-27 GR | 4044211215484 | 10 ST |



Seal, Mounting type: Plug in, Length x width: 42.8 mm, Max. cable diameter: 28 mm, IP 66, Colour: Grey

| Article number | Article name | GTIN (EAN) | Packaging unit |
|----------------|------------------|---------------|----------------|
| <u>28589.6</u> | KDS-DEG 27-28 GR | 4044211215507 | 10 ST |



Seal, Mounting type: Plug in, Length x width: 42.8 mm, Max. cable diameter: 29 mm, IP 66, Colour: Grey

| Article number | Article name | GTIN (EAN) | Packaging unit |
|----------------|------------------|---------------|----------------|
| <u>28590.6</u> | KDS-DEG 28-29 GR | 4044211215521 | 10 ST |



Seal, Mounting type: Plug in, Length x width: 42.8 mm, Max. cable diameter: 30 mm, IP 66, Colour: Grey

| Article number | Article name | GTIN (EAN) | Packaging unit |
|----------------|------------------|---------------|----------------|
| <u>28591.6</u> | KDS-DEG 29-30 GR | 4044211215545 | 10 ST |



Seal, Mounting type: Plug in, Length x width: 42.8 mm, Max. cable diameter: 31 mm, IP 66, Colour: Grey

| Article number | Article name | GTIN (EAN) | Packaging unit |
|----------------|------------------|---------------|----------------|
| <u>28592.6</u> | KDS-DEG 30-31 GR | 4044211215569 | 10 ST |



Seal, Mounting type: Plug in, Length x width: 42.8 mm, Max. cable diameter: 19 mm, IP 66, Colour: Black

| Article number | Article name | GTIN (EAN) | Packaging unit |
|----------------|------------------|---------------|----------------|
| <u>28539.4</u> | KDS-DEG 18-19 BK | 4044211215330 | 10 ST |



Seal, Mounting type: Plug in, Length x width: 42.8 mm, Max. cable diameter: 21 mm, IP 66, Colour: Black

| Article number | Article name | GTIN (EAN) | Packaging unit |
|----------------|------------------|---------------|----------------|
| <u>28541.4</u> | KDS-DEG 20-21 BK | 4044211215378 | 10 ST |

28506.4 KDS-SR 1-4 BK

Big Seals



Seal, Mounting type: Plug in, Length x width: 42.8 mm, Max. cable diameter: 22 mm, IP 66, Colour: Black

| Article number | Article name | GTIN (EAN) | Packaging unit |
|----------------|------------------|---------------|----------------|
| <u>28542.4</u> | KDS-DEG 21-22 BK | 4044211215392 | 10 ST |

##INVERSE##CONTA-CABLE



Seal, Mounting type: Plug in, Length x width: 42.8 mm, Max. cable diameter: 20 mm, IP 66, Colour: Black

| Article number | Article name | GTIN (EAN) | Packaging unit |
|----------------|------------------|---------------|----------------|
| <u>28540.4</u> | KDS-DEG 19-20 BK | 4044211215354 | 10 ST |



Seal, Mounting type: Plug in, Length x width: 42.8 mm, Max. cable diameter: 33 mm, IP 66, Colour: Black

| Article number | Article name | GTIN (EAN) | Packaging unit |
|----------------|------------------|---------------|----------------|
| <u>28601.4</u> | KDS-DEG 32-33 BK | 4044211215613 | 10 ST |



Seal dummy, Mounting type: Plug in, Length x width: 42.8 mm, IP 66, Colour: Black

| Article number | Article name | GTIN (EAN) | Packaging unit |
|----------------|--------------|---------------|----------------|
| <u>28534.4</u> | KDS-DEG/B BK | 4044211215255 | 10 ST |



Seal, Mounting type: Plug in, Length x width: 42.8 mm, Max. cable diameter: 15 mm, IP 66, Colour: Black

| Article number | Article name | GTIN (EAN) | Packaging unit |
|----------------|------------------|---------------|----------------|
| <u>28535.4</u> | KDS-DEG 14-15 BK | 4044211209995 | 10 ST |



Seal, Mounting type: Plug in, Length x width: 42.8 mm, Max. cable diameter: 16 mm, IP 66, Colour: Black

| Article number | Article name | GTIN (EAN) | Packaging unit |
|----------------|------------------|---------------|----------------|
| <u>28536.4</u> | KDS-DEG 15-16 BK | 4044211215279 | 10 ST |

28506.4 KDS-SR 1-4 BK

##INVERSE##CONTA-CABLE



Seal, Mounting type: Plug in, Length x width: 42.8 mm, Max. cable diameter: 17 mm, IP 66, Colour: Black

| Article number | Article name | GTIN (EAN) | Packaging unit |
|----------------|------------------|---------------|----------------|
| <u>28537.4</u> | KDS-DEG 16-17 BK | 4044211215293 | 10 ST |



Seal, Mounting type: Plug in, Length x width: 42.8 mm, Max. cable diameter: 18 mm, IP 66, Colour: Black

| Article number | Article name | GTIN (EAN) | Packaging unit |
|----------------|------------------|---------------|----------------|
| <u>28538.4</u> | KDS-DEG 17-18 BK | 4044211215316 | 10 ST |



Seal, Mounting type: Plug in, Length x width: 42.8 mm, Max. cable diameter: 24 mm, IP 66, Colour: Black

| Article number | Article name | GTIN (EAN) | Packaging unit |
|----------------|------------------|---------------|----------------|
| <u>28544.4</u> | KDS-DEG 23-24 BK | 4044211215439 | 10 ST |



Seal, Mounting type: Plug in, Length x width: 42.8 mm, Max. cable diameter: 20 mm, IP 66, Colour: Grey

| Article number | Article name | GTIN (EAN) | Packaging unit |
|----------------|------------------|---------------|----------------|
| <u>28581.6</u> | KDS-DEG 19-20 GR | 4044211215347 | 10 ST |



Seal, Mounting type: Plug in, Length x width: 42.8 mm, Max. cable diameter: 21 mm, IP 66, Colour: Grey

| Article number | Article name | GTIN (EAN) | Packaging unit |
|----------------|------------------|---------------|----------------|
| <u>28582.6</u> | KDS-DEG 20-21 GR | 4044211215361 | 10 ST |



Seal, Mounting type: Plug in, Length x width: 42.8 mm, Max. cable diameter: 22 mm, IP 66, Colour: Grey

| Article number | Article name | GTIN (EAN) | Packaging unit |
|----------------|------------------|---------------|----------------|
| <u>28583.6</u> | KDS-DEG 21-22 GR | 4044211215385 | 10 ST |



Seal, Mounting type: Plug in, Length x width: 42.8 mm, Max. cable diameter: 23 mm, IP 66, Colour: Grey

| Article number | Article name | GTIN (EAN) | Packaging unit |
|----------------|------------------|---------------|----------------|
| <u>28584.6</u> | KDS-DEG 22-23 GR | 4044211215408 | 10 ST |

28506.4 KDS-SR 1-4 BK

##INVERSE##CONTA-CABLE



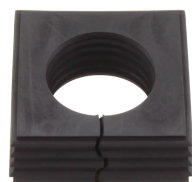
Seal, Mounting type: Plug in, Length x width: 42.8 mm, Max. cable diameter: 25 mm, IP 66, Colour: Black

| Article number | Article name | GTIN (EAN) | Packaging unit |
|----------------|------------------|---------------|----------------|
| <u>28545.4</u> | KDS-DEG 24-25 BK | 4044211215453 | 10 ST |



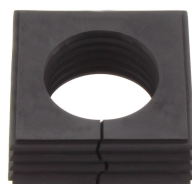
Seal, Mounting type: Plug in, Length x width: 42.8 mm, Max. cable diameter: 26 mm, IP 66, Colour: Black

| Article number | Article name | GTIN (EAN) | Packaging unit |
|----------------|------------------|---------------|----------------|
| <u>28546.4</u> | KDS-DEG 25-26 BK | 4044211215460 | 10 ST |



Seal, Mounting type: Plug in, Length x width: 42.8 mm, Max. cable diameter: 27 mm, IP 66, Colour: Black

| Article number | Article name | GTIN (EAN) | Packaging unit |
|----------------|------------------|---------------|----------------|
| <u>28547.4</u> | KDS-DEG 26-27 BK | 4044211215491 | 10 ST |



Seal, Mounting type: Plug in, Length x width: 42.8 mm, Max. cable diameter: 28 mm, IP 66, Colour: Black

| Article number | Article name | GTIN (EAN) | Packaging unit |
|----------------|------------------|---------------|----------------|
| <u>28548.4</u> | KDS-DEG 27-28 BK | 4044211215514 | 10 ST |



Seal, Mounting type: Plug in, Length x width: 42.8 mm, Max. cable diameter: 29 mm, IP 66, Colour: Black

| Article number | Article name | GTIN (EAN) | Packaging unit |
|----------------|------------------|---------------|----------------|
| <u>28549.4</u> | KDS-DEG 28-29 BK | 4044211215538 | 10 ST |



Seal, Mounting type: Plug in, Length x width: 42.8 mm, Max. cable diameter: 30 mm, IP 66, Colour: Black

| Article number | Article name | GTIN (EAN) | Packaging unit |
|----------------|------------------|---------------|----------------|
| <u>28550.4</u> | KDS-DEG 29-30 BK | 4044211215552 | 10 ST |

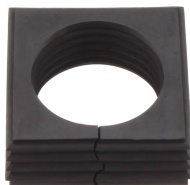


Seal, Mounting type: Plug in, Length x width: 42.8 mm, Max. cable diameter: 31 mm, IP 66, Colour: Black

| Article number | Article name | GTIN (EAN) | Packaging unit |
|----------------|------------------|---------------|----------------|
| <u>28551.4</u> | KDS-DEG 30-31 BK | 4044211215576 | 10 ST |

28506.4 KDS-SR 1-4 BK

##INVERSE##CONTA-CABLE



Seal, Mounting type: Plug in, Length x width: 42.8 mm, Max. cable diameter: 32 mm, IP 66, Colour: Black

| Article number | Article name | GTIN (EAN) | Packaging unit |
|----------------|------------------|---------------|----------------|
| <u>28552.4</u> | KDS-DEG 31-32 BK | 4044211215590 | 10 ST |



Seal, Mounting type: Plug in, Length x width: 42.8 mm, Max. cable diameter: 18 mm, IP 66, Colour: Grey

| Article number | Article name | GTIN (EAN) | Packaging unit |
|----------------|------------------|---------------|----------------|
| <u>28579.6</u> | KDS-DEG 17-18 GR | 4044211215309 | 10 ST |



Seal, Mounting type: Plug in, Length x width: 42.8 mm, Max. cable diameter: 19 mm, IP 66, Colour: Grey

| Article number | Article name | GTIN (EAN) | Packaging unit |
|----------------|------------------|---------------|----------------|
| <u>28580.6</u> | KDS-DEG 18-19 GR | 4044211215323 | 10 ST |



Seal dummy, Mounting type: Plug in, Length x width: 42.8 mm, IP 66, Colour: Grey

| Article number | Article name | GTIN (EAN) | Packaging unit |
|----------------|--------------|---------------|----------------|
| <u>28575.6</u> | KDS-DEG/B GR | 4044211215248 | 10 ST |



Seal, Mounting type: Plug in, Length x width: 42.8 mm, Max. cable diameter: 15 mm, IP 66, Colour: Grey

| Article number | Article name | GTIN (EAN) | Packaging unit |
|----------------|------------------|---------------|----------------|
| <u>28576.6</u> | KDS-DEG 14-15 GR | 4044211209971 | 10 ST |



Seal, Mounting type: Plug in, Length x width: 42.8 mm, Max. cable diameter: 16 mm, IP 66, Colour: Grey

| Article number | Article name | GTIN (EAN) | Packaging unit |
|----------------|------------------|---------------|----------------|
| <u>28577.6</u> | KDS-DEG 15-16 GR | 4044211215262 | 10 ST |



Seal, Mounting type: Plug in, Length x width: 42.8 mm, Max. cable diameter: 17 mm, IP 66, Colour: Grey

| Article number | Article name | GTIN (EAN) | Packaging unit |
|----------------|------------------|---------------|----------------|
| <u>28578.6</u> | KDS-DEG 16-17 GR | 4044211215286 | 10 ST |

28506.4 KDS-SR 1-4 BK

##INVERSE##CONTA-CABLE



Seal, Mounting type: Plug in, Length x width: 42.8 mm, Max. cable diameter: 32 mm, IP 66, Colour: Grey

| Article number | Article name | GTIN (EAN) | Packaging unit |
|-------------------------|------------------|---------------|----------------|
| 28593.6 | KDS-DEG 31-32 GR | 4044211215583 | 10 ST |



Seal, Mounting type: Plug in, Length x width: 42.8 mm, Max. cable diameter: 33 mm, IP 66, Colour: Grey

| Article number | Article name | GTIN (EAN) | Packaging unit |
|-------------------------|------------------|---------------|----------------|
| 28594.6 | KDS-DEG 32-33 GR | 4044211215606 | 10 ST |



Seal, Mounting type: Plug in, Length x width: 42.8 mm, Max. cable diameter: 23 mm, IP 66, Colour: Black

| Article number | Article name | GTIN (EAN) | Packaging unit |
|-------------------------|------------------|---------------|----------------|
| 28543.4 | KDS-DEG 22-23 BK | 4044211215415 | 10 ST |



Seal, Mounting type: Plug in, Length x width: 42.8 mm, Max. cable diameter: 24 mm, IP 66, Colour: Black

| Article number | Article name | GTIN (EAN) | Packaging unit |
|-------------------------|-------------------|---------------|----------------|
| 28554.4 | KDS-DEG/K 7-24 BK | 4044211216108 | 10 ST |



Seal, Mounting type: Plug in, Length x width: 42.8 mm, Max. cable diameter: 24 mm, IP 66, Colour: Grey

| Article number | Article name | GTIN (EAN) | Packaging unit |
|-------------------------|------------------|---------------|----------------|
| 28585.6 | KDS-DEG 23-24 GR | 4044211215422 | 10 ST |



Seal, Mounting type: Plug in, Length x width: 42.8 mm, Max. cable diameter: 25 mm, IP 66, Colour: Grey

| Article number | Article name | GTIN (EAN) | Packaging unit |
|-------------------------|------------------|---------------|----------------|
| 28586.6 | KDS-DEG 24-25 GR | 4044211215446 | 10 ST |



Seal, Mounting type: Plug in, Length x width: 42.8 mm, Max. cable diameter: 26 mm, IP 66, Colour: Grey

| Article number | Article name | GTIN (EAN) | Packaging unit |
|-------------------------|------------------|---------------|----------------|
| 28587.6 | KDS-DEG 25-26 GR | 4044211215477 | 10 ST |

##INVERSE##CONTA-CABLE



Seal, Mounting type: Plug in, Length x width: 42.8 mm, Max. cable diameter: 27 mm, IP 66, Colour: Grey

| Article number | Article name | GTIN (EAN) | Packaging unit |
|----------------|------------------|---------------|----------------|
| <u>28588.6</u> | KDS-DEG 26-27 GR | 4044211215484 | 10 ST |



Seal, Mounting type: Plug in, Length x width: 42.8 mm, Max. cable diameter: 28 mm, IP 66, Colour: Grey

| Article number | Article name | GTIN (EAN) | Packaging unit |
|----------------|------------------|---------------|----------------|
| <u>28589.6</u> | KDS-DEG 27-28 GR | 4044211215507 | 10 ST |



Seal, Mounting type: Plug in, Length x width: 42.8 mm, Max. cable diameter: 29 mm, IP 66, Colour: Grey

| Article number | Article name | GTIN (EAN) | Packaging unit |
|----------------|------------------|---------------|----------------|
| <u>28590.6</u> | KDS-DEG 28-29 GR | 4044211215521 | 10 ST |



Seal, Mounting type: Plug in, Length x width: 42.8 mm, Max. cable diameter: 30 mm, IP 66, Colour: Grey

| Article number | Article name | GTIN (EAN) | Packaging unit |
|----------------|------------------|---------------|----------------|
| <u>28591.6</u> | KDS-DEG 29-30 GR | 4044211215545 | 10 ST |



Seal, Mounting type: Plug in, Length x width: 42.8 mm, Max. cable diameter: 31 mm, IP 66, Colour: Grey

| Article number | Article name | GTIN (EAN) | Packaging unit |
|----------------|------------------|---------------|----------------|
| <u>28592.6</u> | KDS-DEG 30-31 GR | 4044211215569 | 10 ST |



Seal, Mounting type: Plug in, Length x width: 42.8 mm, Max. cable diameter: 19 mm, IP 66, Colour: Black

| Article number | Article name | GTIN (EAN) | Packaging unit |
|----------------|------------------|---------------|----------------|
| <u>28539.4</u> | KDS-DEG 18-19 BK | 4044211215330 | 10 ST |



Seal, Mounting type: Plug in, Length x width: 42.8 mm, Max. cable diameter: 21 mm, IP 66, Colour: Black

| Article number | Article name | GTIN (EAN) | Packaging unit |
|----------------|------------------|---------------|----------------|
| <u>28541.4</u> | KDS-DEG 20-21 BK | 4044211215378 | 10 ST |

28506.4 KDS-SR 1-4 BK

##INVERSE##CONTA-CABLE



Seal, Mounting type: Plug in, Length x width: 42.8 mm, Max. cable diameter: 22 mm, IP 66, Colour: Black

| Article number | Article name | GTIN (EAN) | Packaging unit |
|----------------|------------------|---------------|----------------|
| <u>28542.4</u> | KDS-DEG 21-22 BK | 4044211215392 | 10 ST |



Seal, Mounting type: Plug in, Length x width: 20.3 mm, Max. cable diameter: 7 mm, IP 66, Colour: Grey

| Article number | Article name | GTIN (EAN) | Packaging unit |
|----------------|---------------|---------------|----------------|
| <u>28567.6</u> | KDS-DE 6-7 GR | 4044211211059 | 10 ST |



Seal, Mounting type: Plug in, Length x width: 20.3 mm, Max. cable diameter: 8 mm, IP 66, Colour: Grey

| Article number | Article name | GTIN (EAN) | Packaging unit |
|----------------|---------------|---------------|----------------|
| <u>28568.6</u> | KDS-DE 7-8 GR | 4044211211066 | 10 ST |



Seal, Mounting type: Plug in, Length x width: 20.3 mm, Max. cable diameter: 9 mm, IP 66, Colour: Grey

| Article number | Article name | GTIN (EAN) | Packaging unit |
|----------------|---------------|---------------|----------------|
| <u>28569.6</u> | KDS-DE 8-9 GR | 4044211211073 | 10 ST |



Seal, Mounting type: Plug in, Length x width: 20.3 mm, Max. cable diameter: 10 mm, IP 66, Colour: Grey

| Article number | Article name | GTIN (EAN) | Packaging unit |
|----------------|----------------|---------------|----------------|
| <u>28570.6</u> | KDS-DE 9-10 GR | 4044211211080 | 10 ST |



Seal, Mounting type: Plug in, Length x width: 20.3 mm, Max. cable diameter: 11 mm, IP 66, Colour: Grey

| Article number | Article name | GTIN (EAN) | Packaging unit |
|----------------|-----------------|---------------|----------------|
| <u>28571.6</u> | KDS-DE 10-11 GR | 4044211211097 | 10 ST |



Seal, Mounting type: Plug in, Length x width: 20.3 mm, Max. cable diameter: 12 mm, IP 66, Colour: Grey

| Article number | Article name | GTIN (EAN) | Packaging unit |
|----------------|-----------------|---------------|----------------|
| <u>28572.6</u> | KDS-DE 11-12 GR | 4044211211103 | 10 ST |

28506.4 KDS-SR 1-4 BK

##INVERSE##CONTA-CABLE



Seal, Mounting type: Plug in, Length x width: 20.3 mm, Max. cable diameter: 13 mm, IP 66, Colour: Grey

| Article number | Article name | GTIN (EAN) | Packaging unit |
|----------------|-----------------|---------------|----------------|
| <u>28573.6</u> | KDS-DE 12-13 GR | 4044211215224 | 10 ST |



Seal, Mounting type: Plug in, Length x width: 20.3 mm, Max. cable diameter: 3 mm, IP 66, Colour: Grey

| Article number | Article name | GTIN (EAN) | Packaging unit |
|----------------|---------------|---------------|----------------|
| <u>28563.6</u> | KDS-DE 2-3 GR | 4044211211011 | 10 ST |



Seal, Mounting type: Plug in, Length x width: 20.3 mm, Max. cable diameter: 4 mm, IP 66, Colour: Grey

| Article number | Article name | GTIN (EAN) | Packaging unit |
|----------------|---------------|---------------|----------------|
| <u>28564.6</u> | KDS-DE 3-4 GR | 4044211211028 | 10 ST |



Seal, Mounting type: Plug in, Length x width: 20.3 mm, Max. cable diameter: 5 mm, IP 66, Colour: Grey

| Article number | Article name | GTIN (EAN) | Packaging unit |
|----------------|---------------|---------------|----------------|
| <u>28565.6</u> | KDS-DE 4-5 GR | 4044211211035 | 10 ST |



Seal, Mounting type: Plug in, Length x width: 20.3 mm, Max. cable diameter: 6 mm, IP 66, Colour: Grey

| Article number | Article name | GTIN (EAN) | Packaging unit |
|----------------|---------------|---------------|----------------|
| <u>28566.6</u> | KDS-DE 5-6 GR | 4044211211042 | 10 ST |



Seal, Mounting type: Plug in, Length x width: 20.3 mm, Max. cable diameter: 14 mm, IP 66, Colour: Grey

| Article number | Article name | GTIN (EAN) | Packaging unit |
|----------------|-----------------|---------------|----------------|
| <u>28574.6</u> | KDS-DE 13-14 GR | 4044211215231 | 10 ST |



Seal, Mounting type: Plug in, Length x width: 20.3 mm, Max. cable diameter: 5 mm, IP 66, Colour: Grey

| Article number | Article name | GTIN (EAN) | Packaging unit |
|----------------|-----------------|---------------|----------------|
| <u>28595.6</u> | KDS-DE 2X4-5 GR | 4044211215682 | 10 ST |

28506.4 KDS-SR 1-4 BK

##INVERSE##CONTA-CABLE



Seal, Mounting type: Plug in, Length x width: 20.3 mm, Max. cable diameter: 6 mm, IP 66, Colour: Grey

| Article number | Article name | GTIN (EAN) | Packaging unit |
|----------------|-----------------|---------------|----------------|
| <u>28596.6</u> | KDS-DE 2X5-6 GR | 4044211215699 | 10 ST |



Seal, Mounting type: Plug in, Length x width: 20.3 mm, Max. cable diameter: 3 mm, IP 66, Colour: Grey

| Article number | Article name | GTIN (EAN) | Packaging unit |
|----------------|-----------------|---------------|----------------|
| <u>28597.6</u> | KDS-DE 4X2-3 GR | 4044211215705 | 10 ST |



Seal, Mounting type: Plug in, Length x width: 20.3 mm, Max. cable diameter: 4 mm, IP 66, Colour: Grey

| Article number | Article name | GTIN (EAN) | Packaging unit |
|----------------|-----------------|---------------|----------------|
| <u>28598.6</u> | KDS-DE 4X3-4 GR | 4044211215712 | 10 ST |



Seal, Mounting type: Plug in, Length x width: 20.3 mm, IP 66, Colour: Grey

| Article number | Article name | GTIN (EAN) | Packaging unit |
|----------------|-----------------|---------------|----------------|
| <u>28599.6</u> | KDS-DE/1XASI GR | 4044211215729 | 10 ST |



Seal, Mounting type: Plug in, Length x width: 20.3 mm, IP 66, Colour: Black

| Article number | Article name | GTIN (EAN) | Packaging unit |
|----------------|-----------------|---------------|----------------|
| <u>28560.4</u> | KDS-DE/2XASI BK | 4044211215675 | 10 ST |



Seal dummy, Mounting type: Plug in, Length x width: 20.3 mm, IP 66, Colour: Grey

| Article number | Article name | GTIN (EAN) | Packaging unit |
|----------------|--------------|---------------|----------------|
| <u>28561.6</u> | KDS-DE/B GR | 4044211211004 | 10 ST |



Seal, Mounting type: Plug in, Length x width: 20.3 mm, Max. cable diameter: 2 mm, IP 66, Colour: Grey

| Article number | Article name | GTIN (EAN) | Packaging unit |
|----------------|-----------------|---------------|----------------|
| <u>28562.6</u> | KDS-DE 1,5-2 GR | 4044211209988 | 10 ST |

28506.4 KDS-SR 1-4 BK

##INVERSE##CONTA-CABLE



Seal, Mounting type: Plug in, Length x width: 20.3 mm, Max. cable diameter: 6.5 mm, IP 66, Colour: Black

| Article number | Article name | GTIN (EAN) | Packaging unit |
|----------------|-----------------|---------------|----------------|
| <u>28682.4</u> | KDS-DE 2X6,5 BK | 4044211219536 | 10 ST |



Seal, Mounting type: Plug in, Length x width: 20.3 mm, Max. cable diameter: 6.5 mm, IP 66, Colour: Black

| Article number | Article name | GTIN (EAN) | Packaging unit |
|----------------|-----------------|---------------|----------------|
| <u>28687.4</u> | KDS-DE 3X5-6 BK | 4044211220501 | 10 ST |



Seal, Mounting type: Plug in, Length x width: 20.3 mm, Max. cable diameter: 2 mm, IP 66, Colour: Grey

| Article number | Article name | GTIN (EAN) | Packaging unit |
|----------------|--------------|---------------|----------------|
| <u>28696.6</u> | KDS-DE 2 GR | 4044211220884 | 10 ST |



Seal, Mounting type: Plug in, Length x width: 20.3 mm, Max. cable diameter: 3 mm, IP 66, Colour: Black

| Article number | Article name | GTIN (EAN) | Packaging unit |
|----------------|--------------|---------------|----------------|
| <u>28697.4</u> | KDS-DE 3 BK | 4044211220891 | 10 ST |



Seal, Mounting type: Plug in, Length x width: 20.3 mm, Max. cable diameter: 3 mm, IP 66, Colour: Grey

| Article number | Article name | GTIN (EAN) | Packaging unit |
|----------------|--------------|---------------|----------------|
| <u>28698.6</u> | KDS-DE 3 GR | 4044211220907 | 10 ST |



Seal, Mounting type: Plug in, Length x width: 20.3 mm, IP 66, Colour: Grey

| Article number | Article name | GTIN (EAN) | Packaging unit |
|----------------|-----------------|---------------|----------------|
| <u>28600.6</u> | KDS-DE/2XASI GR | 4044211215736 | 10 ST |



Seal, Mounting type: Plug in, Length x width: 20.3 mm, Max. cable diameter: 4.5 mm, IP 66, Colour: Grey

| Article number | Article name | GTIN (EAN) | Packaging unit |
|----------------|-----------------|---------------|----------------|
| <u>28606.6</u> | KDS-DE 4X4,5 GR | 4044211216252 | 10 ST |

28506.4 KDS-SR 1-4 BK

##INVERSE##CONTA-CABLE



Seal, Mounting type: Plug in, Length x width: 20.3 mm, Max. cable diameter: 6.5 mm, IP 66, Colour: Grey

| Article number | Article name | GTIN (EAN) | Packaging unit |
|-------------------------|-----------------|---------------|----------------|
| 28607.6 | KDS-DE 2X6,5 GR | 4044211216238 | 10 ST |



Seal, Mounting type: Plug in, Length x width: 20.3 mm, Max. cable diameter: 15 mm, IP 66, Colour: Black

| Article number | Article name | GTIN (EAN) | Packaging unit |
|-------------------------|-----------------|---------------|----------------|
| 28608.4 | KDS-DE 14-15 BK | 4044211219314 | 10 ST |



Seal, Mounting type: Plug in, Length x width: 20.3 mm, Max. cable diameter: 15 mm, IP 66, Colour: Grey

| Article number | Article name | GTIN (EAN) | Packaging unit |
|-------------------------|-----------------|---------------|----------------|
| 28609.6 | KDS-DE 14-15 GR | 4044211219307 | 10 ST |



Seal, Mounting type: Plug in, Length x width: 20.3 mm, Max. cable diameter: 16 mm, IP 66, Colour: Black

| Article number | Article name | GTIN (EAN) | Packaging unit |
|-------------------------|-----------------|---------------|----------------|
| 28670.4 | KDS-DE 15-16 BK | 4044211219321 | 10 ST |



Seal, Mounting type: Plug in, Length x width: 20.3 mm, Max. cable diameter: 17 mm, IP 66, Colour: Grey

| Article number | Article name | GTIN (EAN) | Packaging unit |
|-------------------------|-----------------|---------------|----------------|
| 28671.6 | KDS-DE 15-16 GR | 4044211219338 | 10 ST |



Seal, Mounting type: Plug in, Length x width: 20.3 mm, Max. cable diameter: 5 mm, IP 66, Colour: Black

| Article number | Article name | GTIN (EAN) | Packaging unit |
|-------------------------|---------------|---------------|----------------|
| 28672.4 | KDS-DE 4X5 BK | 4044211219345 | 10 ST |



Seal, Mounting type: Plug in, Length x width: 20.3 mm, Max. cable diameter: 5 mm, IP 66, Colour: Grey

| Article number | Article name | GTIN (EAN) | Packaging unit |
|-------------------------|---------------|---------------|----------------|
| 28673.6 | KDS-DE 4X5 GR | 4044211219352 | 10 ST |

28506.4 KDS-SR 1-4 BK

##INVERSE##CONTA-CABLE



Seal, Mounting type: Plug in, Length x width: 20.3 mm, Max. cable diameter: 4.5 mm, IP 66, Colour: Black

| Article number | Article name | GTIN (EAN) | Packaging unit |
|----------------|-----------------|---------------|----------------|
| <u>28681.4</u> | KDS-DE 4X4,5 BK | 4044211219543 | 10 ST |



Seal, Mounting type: Plug in, Length x width: 20.3 mm, Max. cable diameter: 11 mm, IP 66, Colour: Black

| Article number | Article name | GTIN (EAN) | Packaging unit |
|----------------|-----------------|---------------|----------------|
| <u>28530.4</u> | KDS-DE 10-11 BK | 4044211210960 | 10 ST |



Seal, Mounting type: Plug in, Length x width: 20.3 mm, Max. cable diameter: 12 mm, IP 66, Colour: Black

| Article number | Article name | GTIN (EAN) | Packaging unit |
|----------------|-----------------|---------------|----------------|
| <u>28531.4</u> | KDS-DE 11-12 BK | 4044211210977 | 10 ST |



Seal, Mounting type: Plug in, Length x width: 20.3 mm, Max. cable diameter: 13 mm, IP 66, Colour: Black

| Article number | Article name | GTIN (EAN) | Packaging unit |
|----------------|-----------------|---------------|----------------|
| <u>28532.4</u> | KDS-DE 12-13 BK | 4044211210984 | 10 ST |



Seal, Mounting type: Plug in, Length x width: 20.3 mm, Max. cable diameter: 14 mm, IP 66, Colour: Black

| Article number | Article name | GTIN (EAN) | Packaging unit |
|----------------|-----------------|---------------|----------------|
| <u>28533.4</u> | KDS-DE 13-14 BK | 4044211210991 | 10 ST |



Seal, Mounting type: Plug in, Length x width: 20.3 mm, Max. cable diameter: 11 mm, IP 66, Colour: Black

| Article number | Article name | GTIN (EAN) | Packaging unit |
|----------------|------------------|---------------|----------------|
| <u>28553.4</u> | KDS-DE/K 2-11 BK | 4044211216092 | 10 ST |



Seal, Mounting type: Plug in, Length x width: 20.3 mm, Max. cable diameter: 5 mm, IP 66, Colour: Black

| Article number | Article name | GTIN (EAN) | Packaging unit |
|----------------|-----------------|---------------|----------------|
| <u>28555.4</u> | KDS-DE 2X4-5 BK | 4044211215620 | 10 ST |

28506.4 KDS-SR 1-4 BK

##INVERSE##CONTA-CABLE



Seal, Mounting type: Plug in, Length x width: 20.3 mm, Max. cable diameter: 6 mm, IP 66, Colour: Black

| Article number | Article name | GTIN (EAN) | Packaging unit |
|-------------------------|-----------------|---------------|----------------|
| 28556.4 | KDS-DE 2X5-6 BK | 4044211215637 | 10 ST |



Seal, Mounting type: Plug in, Length x width: 20.3 mm, Max. cable diameter: 3 mm, IP 66, Colour: Black

| Article number | Article name | GTIN (EAN) | Packaging unit |
|-------------------------|-----------------|---------------|----------------|
| 28557.4 | KDS-DE 4X2-3 BK | 4044211215644 | 10 ST |



Seal, Mounting type: Plug in, Length x width: 20.3 mm, Max. cable diameter: 4 mm, IP 66, Colour: Black

| Article number | Article name | GTIN (EAN) | Packaging unit |
|-------------------------|-----------------|---------------|----------------|
| 28558.4 | KDS-DE 4X3-4 BK | 4044211215651 | 10 ST |



Seal, Mounting type: Plug in, Length x width: 20.3 mm, IP 66, Colour: Black

| Article number | Article name | GTIN (EAN) | Packaging unit |
|-------------------------|-----------------|---------------|----------------|
| 28559.4 | KDS-DE/1XASI BK | 4044211215668 | 10 ST |



Seal dummy, Mounting type: Plug in, Length x width: 20.3 mm, IP 66, Colour: Black

| Article number | Article name | GTIN (EAN) | Packaging unit |
|-------------------------|--------------|---------------|----------------|
| 28520.4 | KDS-DE/B BK | 4044211210878 | 10 ST |



Seal, Mounting type: Plug in, Length x width: 20.3 mm, Max. cable diameter: 2 mm, IP 66, Colour: Black

| Article number | Article name | GTIN (EAN) | Packaging unit |
|-------------------------|-----------------|---------------|----------------|
| 28521.4 | KDS-DE 1,5-2 BK | 4044211210007 | 10 ST |



Seal, Mounting type: Plug in, Length x width: 20.3 mm, Max. cable diameter: 3 mm, IP 66, Colour: Black

| Article number | Article name | GTIN (EAN) | Packaging unit |
|-------------------------|---------------|---------------|----------------|
| 28522.4 | KDS-DE 2-3 BK | 4044211210885 | 10 ST |

28506.4 KDS-SR 1-4 BK

##INVERSE##CONTA-CABLE



Seal, Mounting type: Plug in, Length x width: 20.3 mm, Max. cable diameter: 4 mm, IP 66, Colour: Black

| Article number | Article name | GTIN (EAN) | Packaging unit |
|----------------|---------------|---------------|----------------|
| <u>28523.4</u> | KDS-DE 3-4 BK | 4044211210892 | 10 ST |



Seal, Mounting type: Plug in, Length x width: 20.3 mm, Max. cable diameter: 5 mm, IP 66, Colour: Black

| Article number | Article name | GTIN (EAN) | Packaging unit |
|----------------|---------------|---------------|----------------|
| <u>28524.4</u> | KDS-DE 4-5 BK | 4044211210908 | 10 ST |



Seal, Mounting type: Plug in, Length x width: 20.3 mm, Max. cable diameter: 6 mm, IP 66, Colour: Black

| Article number | Article name | GTIN (EAN) | Packaging unit |
|----------------|---------------|---------------|----------------|
| <u>28525.4</u> | KDS-DE 5-6 BK | 4044211210915 | 10 ST |



Seal, Mounting type: Plug in, Length x width: 20.3 mm, Max. cable diameter: 7 mm, IP 66, Colour: Black

| Article number | Article name | GTIN (EAN) | Packaging unit |
|----------------|---------------|---------------|----------------|
| <u>28526.4</u> | KDS-DE 6-7 BK | 4044211210922 | 10 ST |



Seal, Mounting type: Plug in, Length x width: 20.3 mm, Max. cable diameter: 8 mm, IP 66, Colour: Black

| Article number | Article name | GTIN (EAN) | Packaging unit |
|----------------|---------------|---------------|----------------|
| <u>28527.4</u> | KDS-DE 7-8 BK | 4044211210939 | 10 ST |



Seal, Mounting type: Plug in, Length x width: 20.3 mm, Max. cable diameter: 9 mm, IP 66, Colour: Black

| Article number | Article name | GTIN (EAN) | Packaging unit |
|----------------|---------------|---------------|----------------|
| <u>28528.4</u> | KDS-DE 8-9 BK | 4044211210946 | 10 ST |



Seal, Mounting type: Plug in, Length x width: 20.3 mm, Max. cable diameter: 10 mm, IP 66, Colour: Black

| Article number | Article name | GTIN (EAN) | Packaging unit |
|----------------|----------------|---------------|----------------|
| <u>28529.4</u> | KDS-DE 9-10 BK | 4044211210953 | 10 ST |

28506.4 KDS-SR 1-4 BK

##INVERSE##CONTA-CABLE



Seal, Mounting type: Plug in, Length x width: 20.3 mm, Max. cable diameter: 6 mm, IP 66, Colour: Grey

| Article number | Article name | GTIN (EAN) | Packaging unit |
|----------------|-----------------|---------------|----------------|
| <u>28688.6</u> | KDS-DE 3X5-6 GR | 4044211220518 | 10 ST |



Seal, Mounting type: Plug in, Length x width: 20.3 mm, Max. cable diameter: 7 mm, IP 66, Colour: Black

| Article number | Article name | GTIN (EAN) | Packaging unit |
|----------------|---------------|---------------|----------------|
| <u>28689.4</u> | KDS-DE 2X7 BK | 4044211220815 | 10 ST |



Seal, Mounting type: Plug in, Length x width: 20.3 mm, Max. cable diameter: 7 mm, IP 66, Colour: Grey

| Article number | Article name | GTIN (EAN) | Packaging unit |
|----------------|---------------|---------------|----------------|
| <u>28690.6</u> | KDS-DE 2X7 GR | 4044211220822 | 10 ST |



Seal, Mounting type: Plug in, Length x width: 20.3 mm, Max. cable diameter: 8 mm, IP 66, Colour: Black

| Article number | Article name | GTIN (EAN) | Packaging unit |
|----------------|---------------|---------------|----------------|
| <u>28691.4</u> | KDS-DE 2X8 BK | 4044211220839 | 10 ST |



Seal, Mounting type: Plug in, Length x width: 20.3 mm, Max. cable diameter: 8 mm, IP 66, Colour: Grey

| Article number | Article name | GTIN (EAN) | Packaging unit |
|----------------|---------------|---------------|----------------|
| <u>28692.6</u> | KDS-DE 2X8 GR | 4044211220846 | 10 ST |



Seal, Mounting type: Plug in, Length x width: 20.3 mm, Max. cable diameter: 1.5 mm, IP 66, Colour: Black

| Article number | Article name | GTIN (EAN) | Packaging unit |
|----------------|---------------|---------------|----------------|
| <u>28693.4</u> | KDS-DE 1,5 BK | 4044211220853 | 10 ST |



Seal, Mounting type: Plug in, Length x width: 20.3 mm, Max. cable diameter: 1.5 mm, IP 66, Colour: Grey

| Article number | Article name | GTIN (EAN) | Packaging unit |
|----------------|---------------|---------------|----------------|
| <u>28694.6</u> | KDS-DE 1,5 GR | 4044211220860 | 10 ST |

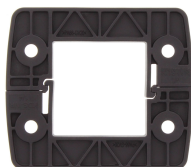
28506.4 KDS-SR 1-4 BK

##INVERSE##CONTA-CABLE



Seal, Mounting type: Plug in, Length x width: 20.3 mm, Max. cable diameter: 2 mm, IP 66, Colour: Black

| Article number | Article name | GTIN (EAN) | Packaging unit |
|-------------------------|--------------|---------------|----------------|
| 28695.4 | KDS-DE 2 BK | 4044211220877 | 10 ST |



Inner locking frame, Length: 80 mm, Height: 11.5 mm, Colour: Black

| Article number | Article name | GTIN (EAN) | Packaging unit |
|-------------------------|----------------|---------------|----------------|
| 28507.4 | KDS-IVR 1-4 BK | 4044211210830 | 10 ST |



Cable entry, Inlay, Mounting type: Plug in, IP 66, Colour: Black

| Article number | Article name | GTIN (EAN) | Packaging unit |
|-------------------------|----------------|---------------|----------------|
| 28518.4 | KDS-Inlay 4 BK | 4044211210861 | 5 ST |

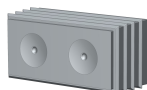
EMC brackets



Shield-connection rail enabling mounting of shield connection clips directly on cable entry system KDS, Mounting type: Screw, Length: 35,3 mm, Width: 68 mm, Height: 16 mm, Profile: 10x3 mm

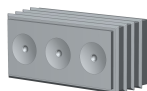
| Article number | Article name | GTIN (EAN) | Packaging unit |
|-------------------------|-----------------|---------------|----------------|
| 28623.0 | KDS-EMV-SAB 1-4 | 4044211219628 | 1 ST |

DES seals



Seal, Mounting type: Plug in, Length 42.7 mm, Width: 20.3 mm, IP54, Colour: Grey

| Article number | Article name | GTIN (EAN) | Packaging unit |
|-------------------------|-------------------|---------------|----------------|
| 28800.6 | KDS-DES 2X10,5 GR | 4044211227616 | 5 ST |

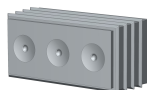


Seal, Mounting type: Plug in, Length 42.7 mm, Width: 20.3 mm, IP54, Colour: Grey

| Article number | Article name | GTIN (EAN) | Packaging unit |
|-------------------------|------------------|---------------|----------------|
| 28801.6 | KDS-DES 3X9,5 GR | 4044211227623 | 5 ST |

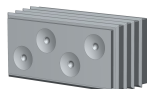
28506.4 KDS-SR 1-4 BK

DES seals



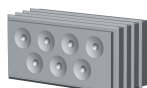
Seal, Mounting type: Plug in, Length 42.7 mm, Width: 20.3 mm, IP54, Colour: Grey

| Article number | Article name | GTIN (EAN) | Packaging unit |
|----------------|------------------|---------------|----------------|
| <u>28802.6</u> | KDS-DES 3X8,5 GR | 4044211227630 | 5 ST |



Seal, Mounting type: Plug in, Length 42.7 mm, Width: 20.3 mm, IP54, Colour: Grey

| Article number | Article name | GTIN (EAN) | Packaging unit |
|----------------|------------------|---------------|----------------|
| <u>28803.6</u> | KDS-DES 4X7,5 GR | 4044211233815 | 5 ST |



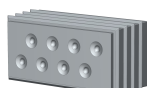
Seal, Mounting type: Plug in, Length 42.7 mm, Width: 20.3 mm, IP54, Colour: Grey

| Article number | Article name | GTIN (EAN) | Packaging unit |
|----------------|------------------|---------------|----------------|
| <u>28804.6</u> | KDS-DES 7X6,5 GR | 4044211233839 | 5 ST |



Seal, Mounting type: Plug in, Length 42.7 mm, Width: 20.3 mm, IP54, Colour: Grey

| Article number | Article name | GTIN (EAN) | Packaging unit |
|----------------|------------------|---------------|----------------|
| <u>28805.6</u> | KDS-DES 8X5,5 GR | 4044211233822 | 5 ST |



Seal, Mounting type: Plug in, Length 42.7 mm, Width: 20.3 mm, IP54, Colour: Grey

| Article number | Article name | GTIN (EAN) | Packaging unit |
|----------------|------------------|---------------|----------------|
| <u>28806.6</u> | KDS-DES 8X4,5 GR | 4044211233846 | 5 ST |

Sheet-metal puncher



Sheet-metal puncher

| Article number | Article name | GTIN (EAN) | Packaging unit |
|----------------|---------------|---------------|----------------|
| <u>28674.0</u> | BL KDS-SR 1-4 | 4044211217440 | 1 ST |



Sheet metal punch for rectangular openings, Dimensions opening: 46 x 46 mm, Maximum wall thickness: 2.0 mm for stainless steel sheet, Material: steel

| Article number | Article name | GTIN (EAN) | Packaging unit |
|----------------|------------------|---------------|----------------|
| <u>28683.0</u> | BL-VA KDS-SR 1-4 | 4044211218782 | 1 ST |