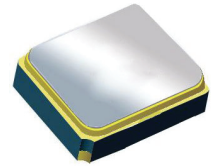


# Surface Mount 915.00MHz SAW Filter



2.0 x 1.6 x 0.9 mm

**AFS20A26-915.00-T3**

Moisture Sensitivity Level (MSL) – This product is Hermetically Sealed and not Moisture Sensitive - MSL = N/A: Not Applicable



**RoHS  
Compliant**

## FEATURES:

- 2.0 x 1.6 x 0.9 mm low profile SMT package
- Low Insertion loss
- Excellent selectivity with high out-of-band rejection

## APPLICATIONS:

- Wireless Communication
- Remote Control
- Cellular Phones

## ELECTRICAL SPECIFICATIONS:

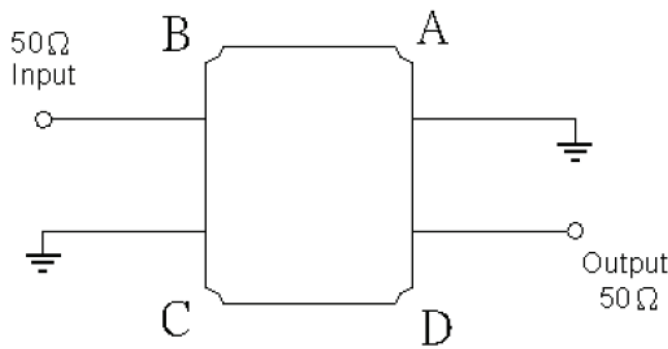
### Maximum Ratings

Item	Value
Input Power Level	+15 dBm max.
DC Permissive Voltage	3V DC max.
Operating Temperature Range	-40°C to + 85°C
Storage Temperature Range	-40°C to + 85°C

Parameters	Minimum	Typical	Maximum	Units	Notes
Center Frequency ( $f_c$ )		915.00		MHz	
Insertion Loss (IL)		2.00	3.00	dB	902 ~ 928MHz
Effective Bandwidth		26		MHz	
Amplitude Ripple		0.80	1.50	dB	902 ~ 928MHz
Worst-Case Input / Output Return Loss		9.5	8.0	dB	902 ~ 928MHz
Stop-band Attenuation (Referenced to 0.0 dB)	40	55		dB	10MHz ~ 857.5MHz
	35	48			857.5MHz ~ 882.5MHz
	35	48			970MHz ~ 1005MHz
	45	52			1005MHz ~ 1110MHz
	30	35			1110MHz ~ 3000MHz
Source Impedance ( $Z_s$ )		50		$\Omega$	See note # 1
Load Impedance ( $Z_L$ )		50		$\Omega$	See note # 1

**Note #1:** No matching network required for operation into 50 $\Omega$ 's

## TEST CIRCUIT:

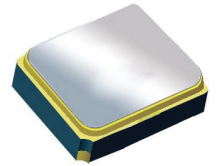


# Surface Mount 915.00MHz SAW Filter

AFS20A26-915.00-T3

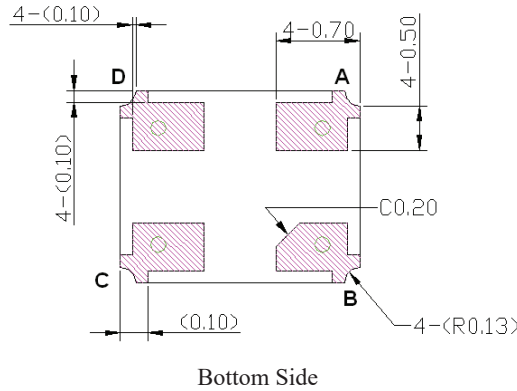
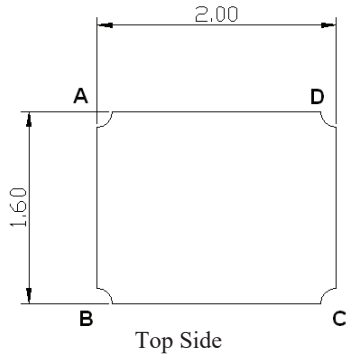


RoHS  
Compliant

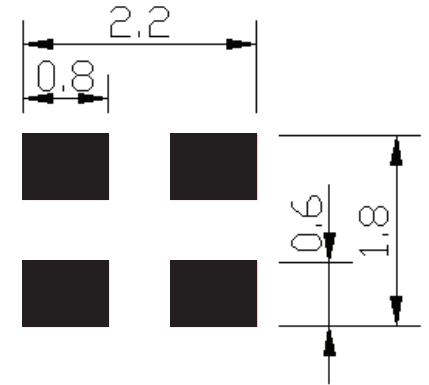


2.0 x 1.6 x 0.9 mm

## OUTLINE DIMENSIONS:



## Recommended Land Pattern:

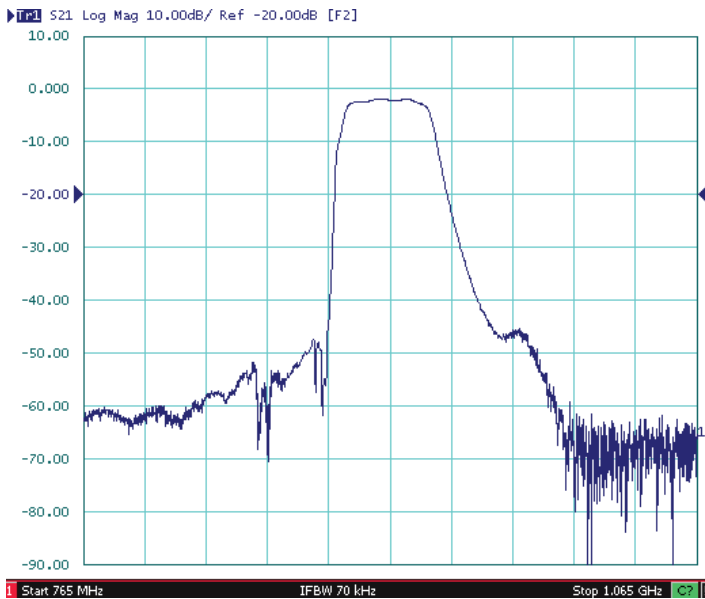


#B:	Input
#D:	Output
#A,C:	Ground
Unit:	mm

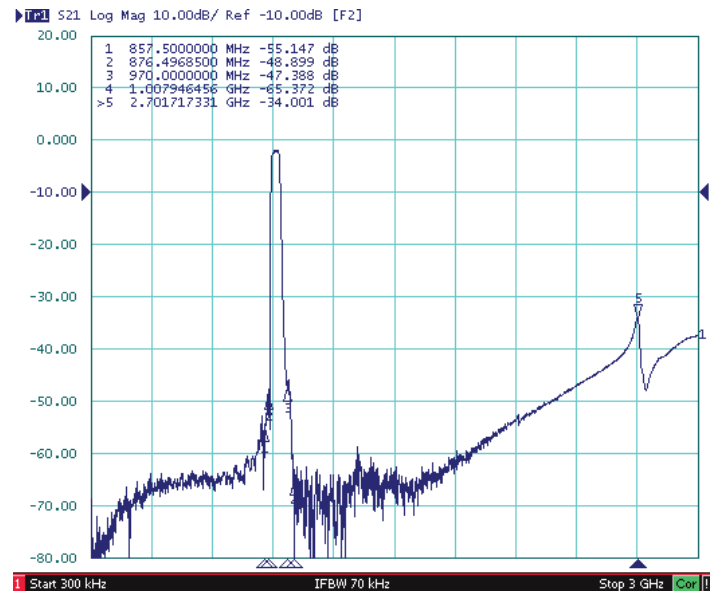
\*All Dimensions are in mm

## FREQUENCY CHARACTERISTICS:

### Filter Frequency Response (Narrowband)



### Filter Frequency Response (Wideband)

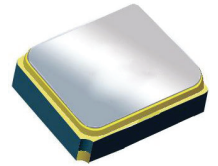


# Surface Mount 915.00MHz SAW Filter

AFS20A26-915.00-T3

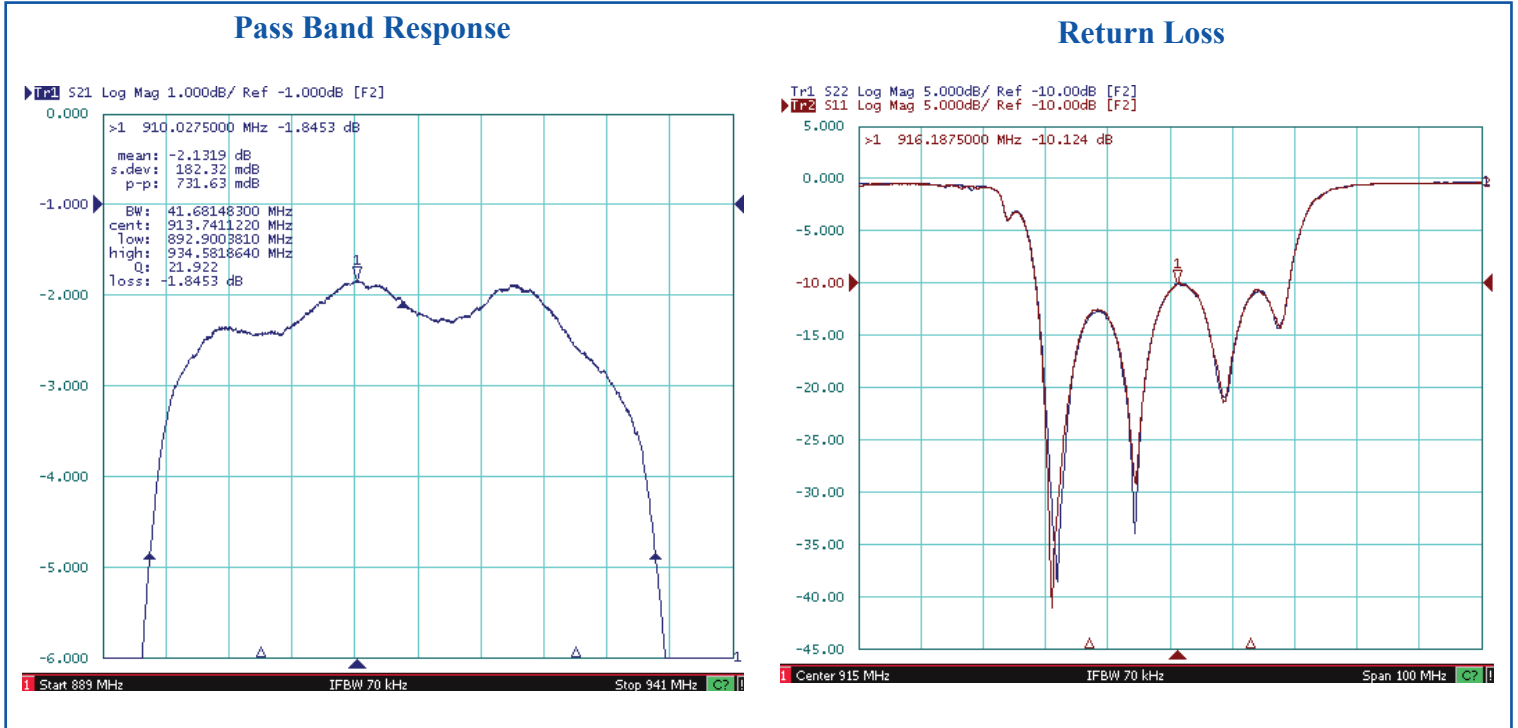


RoHS  
Compliant

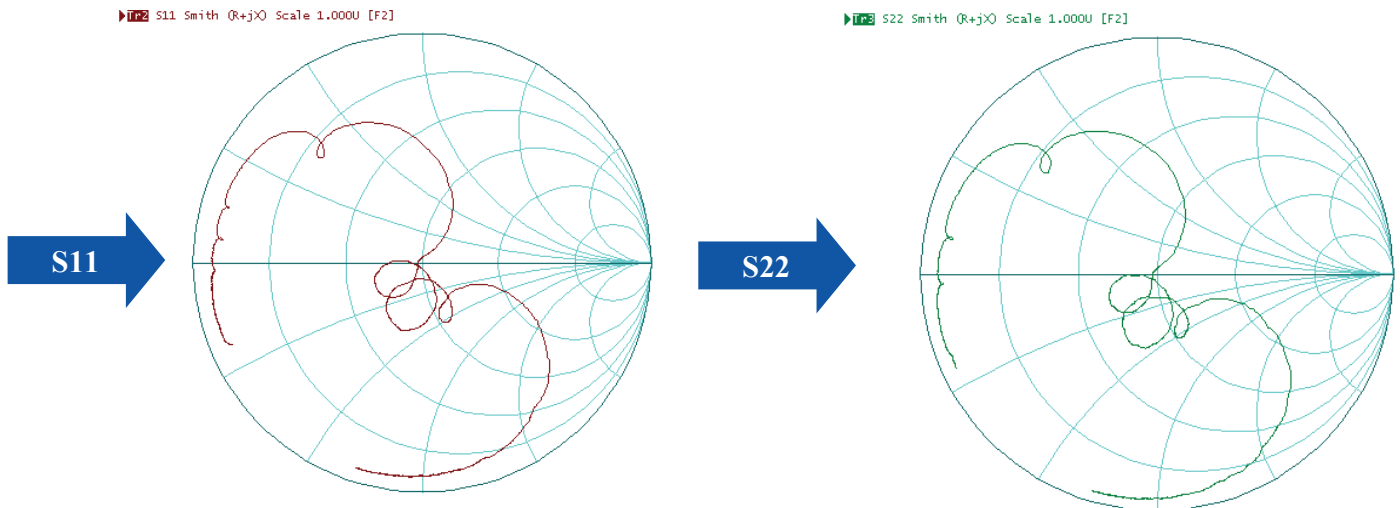


2.0 x 1.6 x 0.9 mm

## FREQUENCY CHARACTERISTIC:



## Reflection Functions:



Note # 2: Detail S parameter information (.s2p file) available upon request



1501 Hidden Creek Lane Spicewood TX 78751  
Phone: 949-546-8000 | Fax: 949-546-8001  
For terms and conditions of sales visit:  
[www.abracon.com](http://www.abracon.com)

REVISED: 07/23/2021

ABRACON IS  
ISO9001-2015  
CERTIFIED

