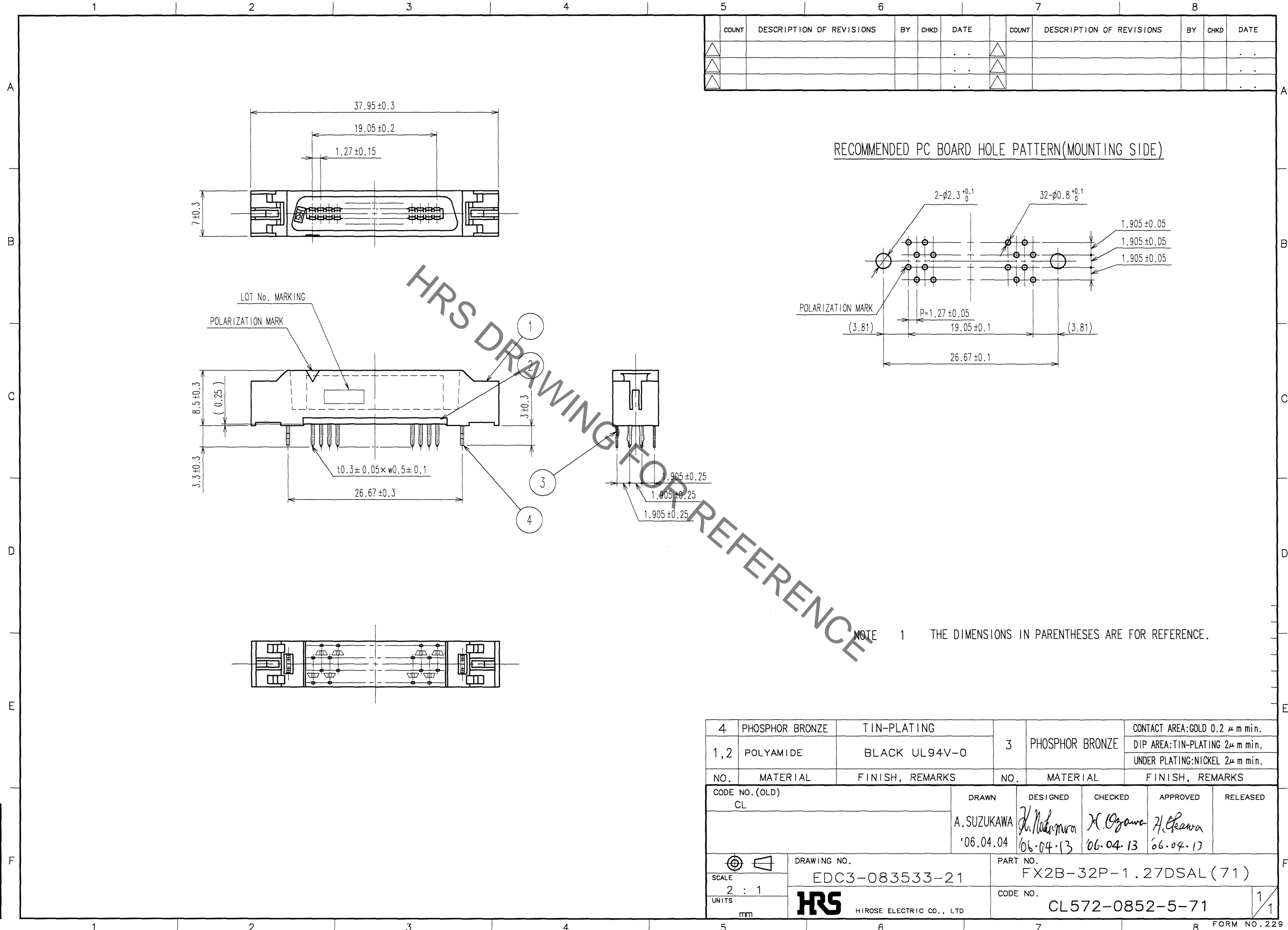


May.1.2023 Copyright 2023 HIROSE ELECTRIC CO., LTD. All Rights Reserved.
In case of consideration for using Automotive equipment / device which demand high reliability, kindly contact our sales window correspondents.

TO
PCK



COUNT	DESCRIPTION OF REVISIONS	BY	CHKD	DATE	COUNT	DESCRIPTION OF REVISIONS	BY	CHKD	DATE

NO.	MATERIAL	FINISH, REMARKS	NO.	MATERIAL	FINISH, REMARKS
4	PHOSPHOR BRONZE	TIN-PLATING	3	PHOSPHOR BRONZE	CONTACT AREA:GOLD 0.2 μ m min.
1,2	POLYAMIDE	BLACK UL94V-0			DIP AREA:TIN-PLATING 2μ m min.
					UNDER PLATING:NICKEL 2μ m min.

CODE NO. (OLD) CL	DRAWN A.SUZUKAWA '06.04.04	DESIGNED <i>H. Nakamura</i> '06.04.13	CHECKED <i>H. Ozawa</i> '06.04.13	APPROVED <i>H. Okawa</i> '06.04.13	RELEASED
----------------------	----------------------------------	---	---	--	----------

SCALE 2 : 1	DRAWING NO. EDC3-083533-21	PART NO. FX2B-32P-1.27DSAL(71)
UNITS mm	HRS HIROSE ELECTRIC CO., LTD	CODE NO. CL572-0852-5-71