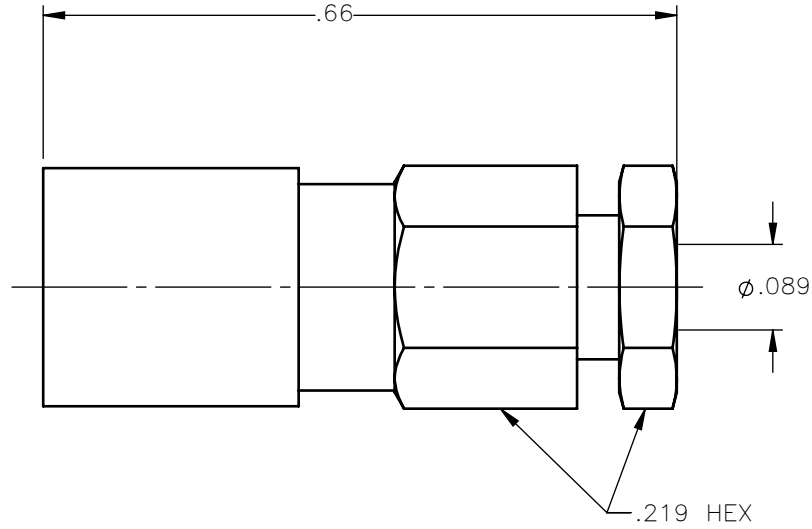


REVISIONS			
REV.	DESCRIPTION	DATE	APPROVED
A	INITIAL RELEASE	04/09/18	C.E.





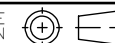
NOTES:

MATERIALS:

1. INSULATORS = VIRGIN WHITE TEFLON PER ASTM D1710, GRADE 1, TYPE I, CLASS "B".
2. CONTACT & SPRING = BERYLLIUM COPPER PER ASTM B196, ALLOY C17300, TEMPER TD04.
3. SLEEVE = BRASS PER C36000, ANNEALING 1H AT 500°C, HARDNESS 80-120 HV.
4. ALL OTHER METAL PARTS = BRASS PER ASTM B16, ALLOY C36000, TEMPER H02.

FINISHES:

1. CONTACT = GOLD PLATE PER ASTM B488-11, TYPE II, 50µin MIN, GRADE C, OVER 100 TO 200µin STRESS FREE SULFAMATE NICKEL PER AMS-QQ-N-290.
2. ALL OTHER METAL PARTS = NICKEL PLATE PER AMS-QQ-N-290, CLASS 1, GRADE G, EXCEPT 100 TO 200µin THICK OVER 50 TO 100µin THICK COPPER PER AMS 2418.

UNLESS OTHERWISE SPECIFIED DIMENSIONS ARE IN INCHES TOLERANCES ON	DWN:	DATE	 Property of Radiall This document cannot be reproduced or communicated to a third party without prior written permission of RADIALL.	
	C.E.	04/09/18		
DECIMAL	ANGLE	CHKD:	DATE	<b>SMB STRAIGHT FEMALE PLUG CLAMP TYPE FOR RG-178 &amp; SIMILAR CABLES</b>
		D.N.	04/09/18	
		APVD:	DATE	
		J.M.	04/09/18	SIZE: A    FSCM NO.: 19505    DWG NO.: 2002-7551-002    REV: A
REFERENCE:	MATERIALS & FINISHES:	SEE NOTES		SCALE: 5:1    THIRD ANGLE PROJECTION
ORIGINATED: C.E. DATE: 04/09/18				 SHEET 1 OF 1

2002-7551-002