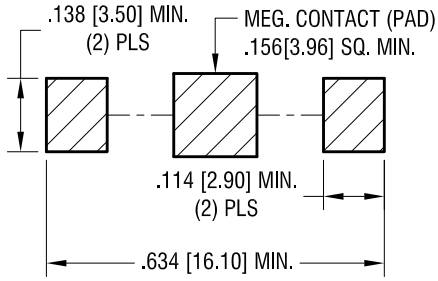
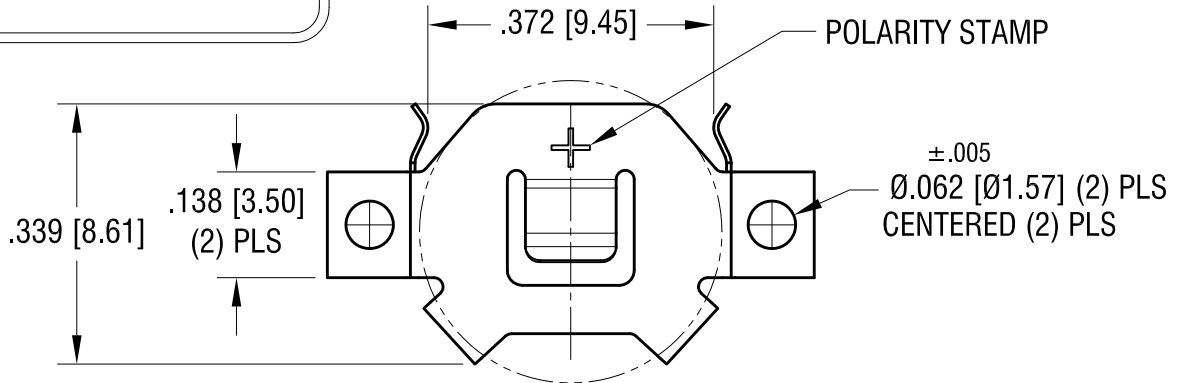


THIS DOCUMENT IS THE PROPERTY OF KEYSTONE ELECTRONICS CORP. AND SHALL NOT BE REPRODUCED, DISTRIBUTED OR USED AS A BASIS FOR MANUFACTURE WITHOUT PRIOR WRITTEN PERMISSION FROM KEYSTONE ELECTRONICS CORP.

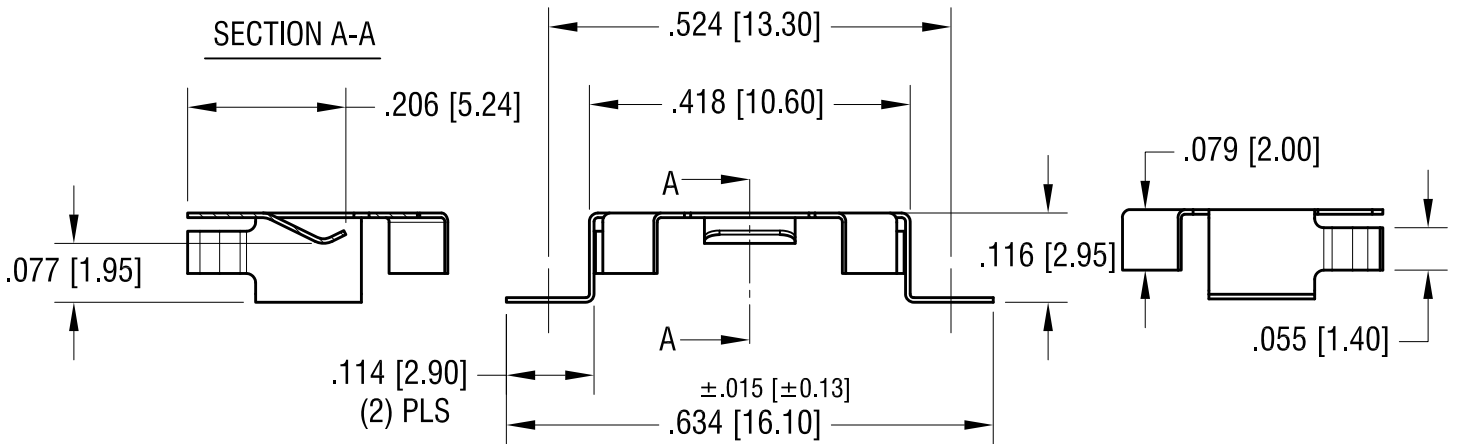
MOUNTING PAD LAYOUT



ACTUAL SIZE



SECTION A-A



KEYSTONE ELECTRONICS CORP.

www.keyelco.com • NEW HYDE PARK, NY 11040 • Tel (516) 328-7500

PART NAME
10mm SM COIN CELL CLIP

MATERIAL
.006 [0.15] TH'K PHOSPHOR BRONZE

FINISH MATTE TIN PLATE	DRN BY NT	DATE 9.17.10
	APP'D RH	SCALE 4X

TOLERANCES INCH [MM] DECIMAL ±.010 [±0.25]	CODE C	DWG NO. 3050
ANGULAR ± 1° UNLESS OTHERWISE SPECIFIED		

3.31.21	POLARITY STAMP WAS CUT THRU MA'L CHANGE AS PER ECN 21-032	B
12.27.16	CHANGE AS PER ECN 16-115	A
DATE	DESCRIPTION	REV.