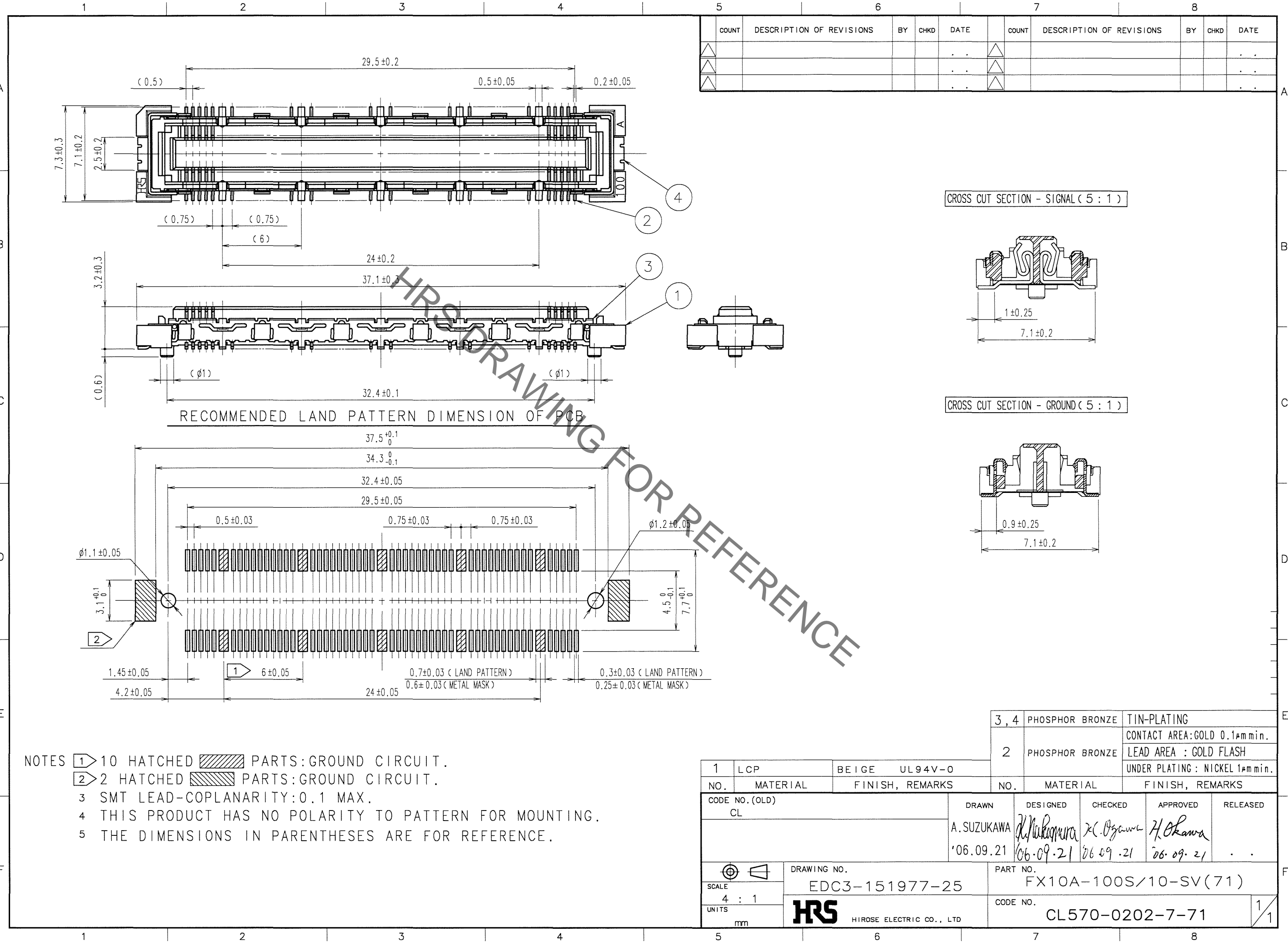


May.1.2023 Copyright 2023 HIROSE ELECTRIC CO., LTD. All Rights Reserved.
In case of consideration for using Automotive equipment / device which demand high reliability, kindly contact our sales window correspondents.



COUNT	DESCRIPTION OF REVISIONS	BY	CHKD	DATE	COUNT	DESCRIPTION OF REVISIONS	BY	CHKD	DATE
△					△				
△					△				
△					△				

RECOMMENDED LAND PATTERN DIMENSION OF PCB

- NOTES
- ① 10 HATCHED PARTS:GROUND CIRCUIT.
 - ② 2 HATCHED PARTS:GROUND CIRCUIT.
 - 3 SMT LEAD-COPLANARITY:0.1 MAX.
 - 4 THIS PRODUCT HAS NO POLARITY TO PATTERN FOR MOUNTING.
 - 5 THE DIMENSIONS IN PARENTHESES ARE FOR REFERENCE.

TO

1	LCP	BEIGE	UL94V-0	3, 4	PHOSPHOR BRONZE	TIN-PLATING		
2	PHOSPHOR BRONZE			2	PHOSPHOR BRONZE	CONTACT AREA:GOLD 0.1μmmin. LEAD AREA : GOLD FLASH UNDER PLATING : NICKEL 1μmmin.		
NO.	MATERIAL	FINISH, REMARKS		NO.	MATERIAL	FINISH, REMARKS		
CODE NO. (OLD) CL				DRAWN	DESIGNED	CHECKED	APPROVED	RELEASED
				A. SUZUKAWA '06.09.21	<i>K. Nakamura</i> 06.09.21	<i>K. Ogasawara</i> 06.09.21	<i>H. Okawa</i> 06.09.21	
DRAWING NO. EDC3-151977-25				PART NO. FX10A-100S/10-SV(71)				
SCALE 4 : 1				CODE NO. CL570-0202-7-71				
UNITS mm				HRS HIROSE ELECTRIC CO., LTD				