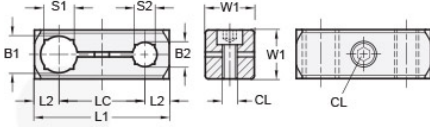




MT20/20-CC2WP-AN

Ruland Two-Way Connector Clamp, Thru Holes 20mmx20mm, L 66mm, Black Anodized Aluminum




Description

Ruland MT20/20-CC2WP-AN a two-way connector clamp with parallel thru holes for 20mm round and 16mm square tubes, M6 clamp screws, 25mm width/height, and 66mm overall length. It is designed to fit on Ruland tubes and flange bolt bases that begin with MTXX. MT20/20-CC2WP-AN is aluminum with a black anodized finish and screws are 304 stainless steel for added corrosion resistance when compared to unplated types. This two-way connector clamp is commonly used to support tubes for mounting sensors, screens, reflectors, plexiglass machine guards, and other industrial components. The parallel thru holes make MT20/20-CC2WP-AN an ideal connector clamp for compact mounting systems such as those found on small conveyors. MT20-ALK-M6-30 adjustable clamping handles can be used in place of standard hardware allowing for rapid repositioning of tubes or the connector without the need for tools. MT20/20-CC2WP-AN is manufactured by Otto Ganter, inventoried by Ruland, and RoHS3 compliant.

Product Specifications

Thru Hole 1 Diameter B1	20 mm	Thru Hole 2 Diameter B2	20 mm
Thru Hole Tolerance	+0.13/-0 mm	Thru Hole 2 Tolerance	+0.13/-0 mm
Overall Length L1	66 mm	Edge To Center L2	12.5 mm
Center To Center LC	41 mm	Square Thru Hole 1 S1	16 mm
Square Thru Hole 2 S2	16 mm	Width & Height W1	25 mm
Clamp Screw CL	M6	Weight (lbs)	0.146200
Material Specification	Anodized Aluminum	Manufacturer	JW Winco/ Otto Ganter
UPC	634529231661	Country of Origin	Germany
Tariff Code	7609.00.0000		

Note 1 Performance ratings are for guidance only. The user must determine suitability for a particular application.

Prop 65  **WARNING** This product can expose you to the chemical Nickel (metallic), known to the State of California to cause cancer. For more information go to www.P65Warnings.ca.gov.