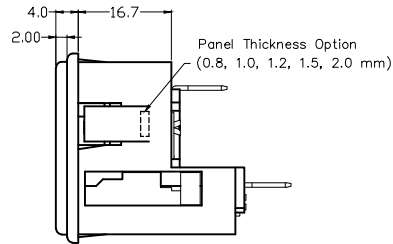
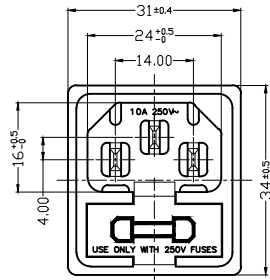
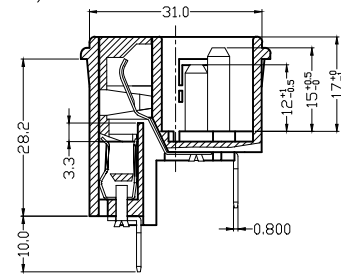
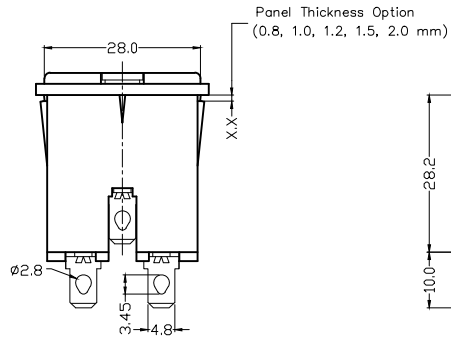


6 5 4 3 2 1

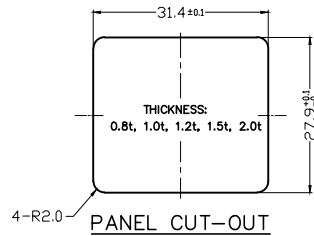
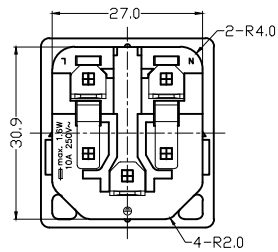
D



C






B



A

SPECIFICATION

- A: MATERIAL:
 1. HOUSING: NYLON 66 FLAMMABILITY, UL 94V-0
 2. TERMINAL: COPPER ALLOY, TIN PLATED
- B: CHARACTERISTICS:
 1. RATING: 10A 250V~ NORTH AMERICA & EUROPE
 2. INSULATION RESISTANCE: 100 MΩ MIN, AT 500 VDC
 3. ELECTRIC STRENGTH: AC 2,000 V FOR 1 MINUTE
- C: APPROVALS:   
- D: ORDERING INFORMATION:

P/N	PANEL THICKNESS
42R35A-3122-080	0.8 mm
42R35A-3122-100	1.0 mm
42R35A-3122-120	1.2 mm
42R35A-3122-150	1.5 mm
42R35A-3122-200	2.0 mm
42R35A-3122-300	3.0 mm

RoHS
COMPLIANT

REVISIONS	CHNG	CHECK	APPR
	REV	DATE	

TOLERANCE UNLESS OTHERWISE SPECIFIED	
X	± 1
X.X	± 0.4
X.XX	± 0.20
DRAWN BY	PB
CHECK BY	-
APPR BY	-
DATE:	9/15/21

Power Dynamics, Inc.
 Phone: 973 560-0019 Whippany, New Jersey Fax: 973 560-0076

PART: IEC 60320 C14 APPLIANCE INLET; 2 FUSE SNAP IN PANEL MOUNT; 4.8mm QC TERMINALS

PART #: **42R35A-3122-XXX**

SIZE: **A** ALL DIMENSIONS FOR REFERENCE ONLY
 SCALE: **NTS** REF MODEL: 0717-2

SHEET 1 of 1
 REV: -

6 5 4 3 2 1