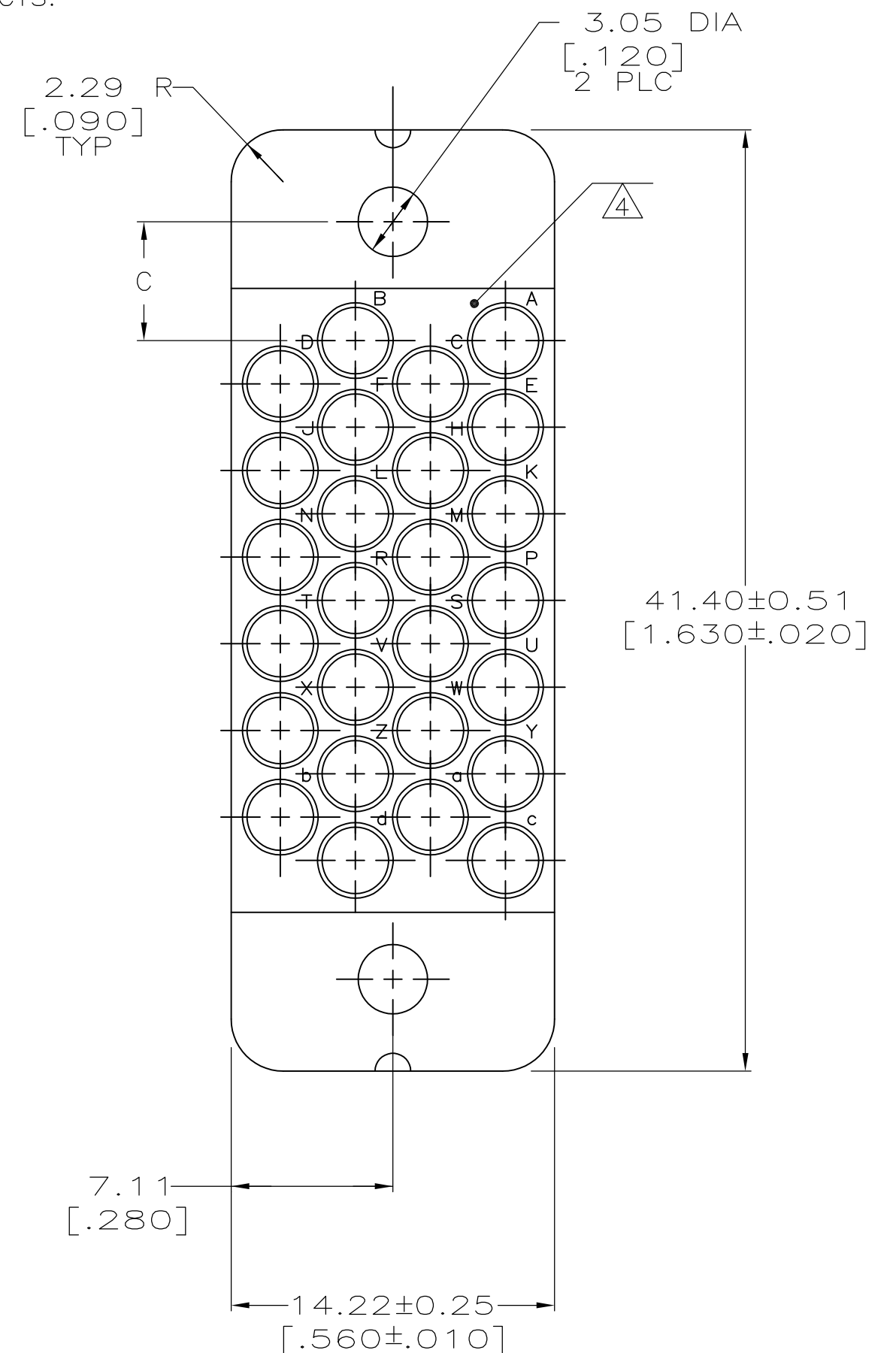
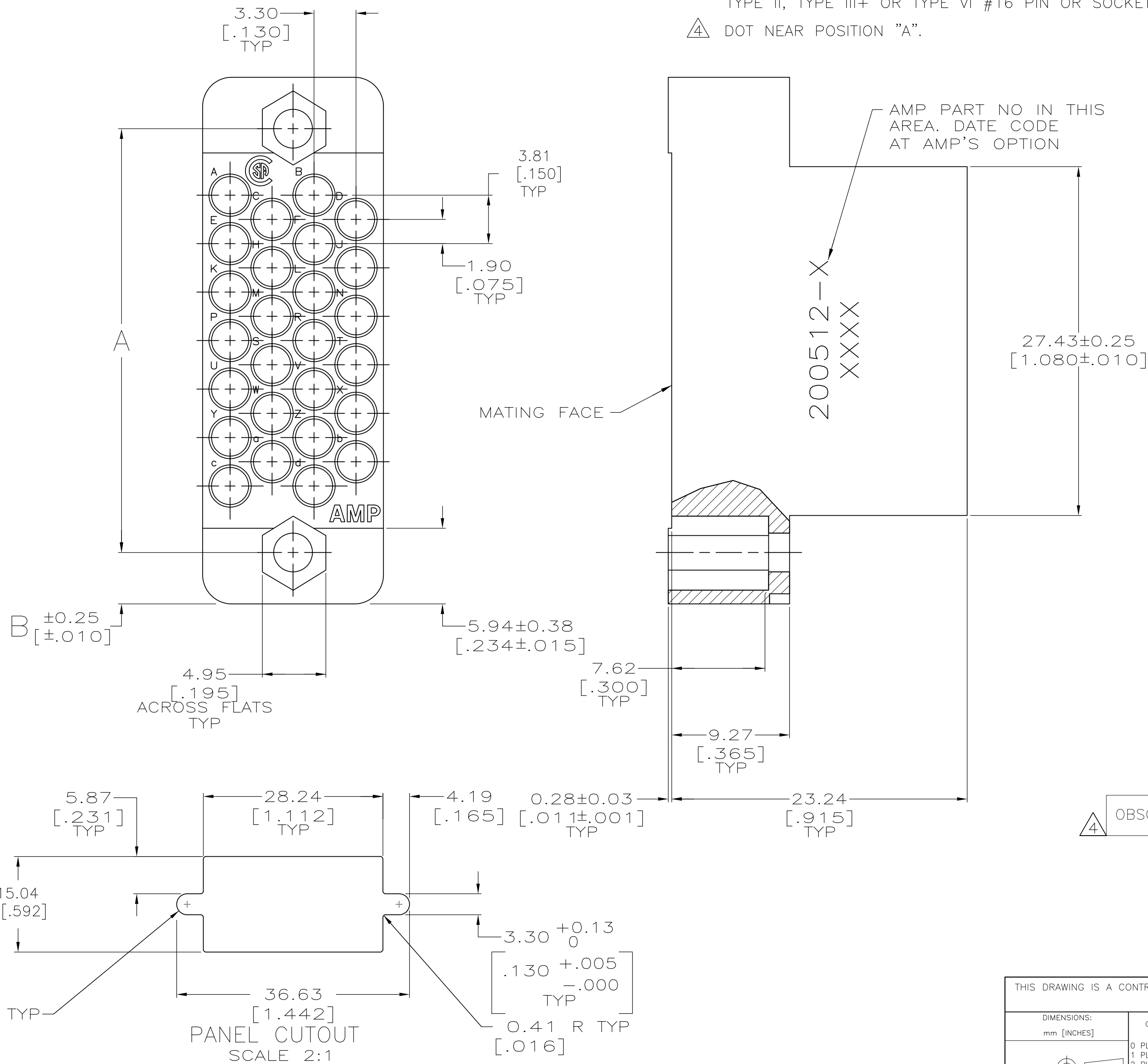


THIS DRAWING IS UNPUBLISHED. RELEASED FOR PUBLICATION
 © COPYRIGHT - By - ALL RIGHTS RESERVED.

REVISIONS					
P	LTR	DESCRIPTION	DATE	DWN	APVD
AE1		REVISED PER ECO-16-004000	28SEP2016	NK	MZ

- 1 PHENOLIC PER MIL-M-14, TYPE CFG, BLACK.
- 2 DIALYL PHTHALATE PER MIL-M-14, TYPE SDG-F, BLUE.
- 3. WHEN MATING WITH BLOCK 201359, ACCOMODATES TYPE II, TYPE III+ OR TYPE VI #16 PIN OR SOCKET CONTACTS.
- 4 DOT NEAR POSITION "A".



4	OBSOLETE	5.36 [.211]	3.91 [.154]	33.58 [1.322]	2	—200512-7—
		5.36 [.211]	3.91 [.154]	33.58 [1.322]	2	200512-3
		5.23 [.206]	4.04 [.159]	33.32 [1.312]	1	200512-2
		C	B	A	MATERIAL	PART NUMBER

THIS DRAWING IS A CONTROLLED DOCUMENT.		DWN C.REIFSNYDER 07 DEC 95		
DIMENSIONS: mm [INCHES]		CHK R.STONE 28 FEB 96		
TOLERANCES UNLESS OTHERWISE SPECIFIED:		APVD G.A.STEINHAUER 15 MAR 96	NAME	
0 PLC ± -		PRODUCT SPEC		
1 PLC ± -		APPLICATION SPEC		
2 PLC ± 0.13 [.005]		WEIGHT		
3 PLC ± -		SIZE CAGE CODE DRAWING NO RESTRICTED TO		
4 PLC ± -		A2 00779 C=200512		
ANGLES ± -		SCALE 4:1 SHEET 1 OF 1 REV AE1		
FINISH		CUSTOMER DRAWING		