



External insulated cross-connector, No. of poles: 2, Mounting type: Plug in, Width: 36.44 mm, Rated current: 150 A; Colour: Yellow

**RAL:** 1026

### Business data

Article number	2763.2
Article name	AQI 2/50 YE
GTIN (EAN)	4044211054939
Packaging unit	5
Quantity unit	PC
Weight per piece (not including packaging)	35.4 g
Weight per piece (including packaging)	35.9 g
Unit of weight	G
Customs number	85389099
Country of origin	DE
Prio-Article	2763.2
Product description	External insulated cross-connector

### Technical data

#### Dimensions

Width	36.44 mm
-------	----------

Pitch size	20 mm
------------	-------

#### Ratings

Voltage with partition, max.	1000 V
------------------------------	--------

Voltage without partition, max.	1000 V
---------------------------------	--------

Rated current	150 A
---------------	-------

Contamination degree	3
----------------------	---

#### Connection data

No. of poles	2
--------------	---

#### Materials

Material	Copper
----------	--------

Surface	Tin-plated
---------	------------

Insulation housing	Polyamide 6.6
--------------------	---------------

Flammability class UL 94	V-2
--------------------------	-----

Working temperature, min.	-40 °C
---------------------------	--------

Working temperature, max.	105 °C
---------------------------	--------

#### Further technical data

Mounting type	Plug in
---------------	---------

Insulation available	✓
----------------------	---

Touch protection is available	✓
-------------------------------	---

Number of bridged terminals	2
-----------------------------	---

#### Environmental Product Compliance

REACH Conform	yes
---------------	-----

REACH Candidate Substance Note	No
--------------------------------	----

RoHS Conform	yes
--------------	-----

# Data sheet

2763.2 AQI 2/50 YE



---

## Media

---

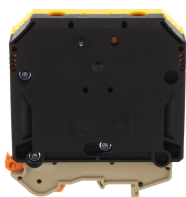
### Accessories

#### ##INVERSE##CONTA-CONNECT



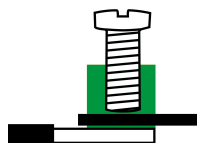
Feed-through terminal, Screw connection, Mounting type: Mounting rail TS 35/7.5 and TS 32, Rated cross-section: 240 mm<sup>2</sup>, Width: 36 mm, Colour: Black-yellow

Article number	Article name	GTIN (EAN)	Packaging unit
<u>1570.2</u>	RK 240/PE BKYE	4044211047412	5 ST



Feed-through terminal, Screw connection, Mounting type: Mounting rail TS 35/7.5 and TS 32, Rated cross-section: 95 mm<sup>2</sup>, Width: 25 mm, Colour: Black-yellow

Article number	Article name	GTIN (EAN)	Packaging unit
<u>1568.2</u>	RK 95/PE BKYE	4044211047399	10 ST



Feed-through terminal for direct mount, Screw connection, Mounting type: Mounting surface, Rated cross-section: 50 mm<sup>2</sup>, Width: 20 mm, Colour: Beige

Article number	Article name	GTIN (EAN)	Packaging unit
<u>1582.2</u>	RK 50-D BG	4044211047702	10



Feed-through terminal, Screw connection, Mounting type: Mounting rail TS 35/7.5 and TS 32, Rated cross-section: 50 mm<sup>2</sup>, Width: 20 mm, Colour: Black-yellow

Article number	Article name	GTIN (EAN)	Packaging unit
<u>1567.2</u>	RK 50/PE BKYE	4044211047382	10 ST



Feed-through terminal, Screw connection, Mounting type: Mounting rail TS 35/7.5 and TS 32, Rated cross-section: 150 mm<sup>2</sup>, Width: 31 mm, Colour: Black-yellow

Article number	Article name	GTIN (EAN)	Packaging unit
<u>1569.2</u>	RK 150/PE BKYE	4044211047405	5 ST



Feed-through terminal, Screw connection, Mounting type: Mounting rail TS 35/7.5 and TS 32, Rated cross-section: 50 mm<sup>2</sup>, Width: 20 mm, Colour: Beige

Article number	Article name	GTIN (EAN)	Packaging unit
<u>1120.2</u>	RK 50 BG	4044211018702	10

---

### ##INVERSE##CONTA-CONNECT

---



Ex feed-through terminal ATEX-certified, Screw connection, Mounting type:Mounting rail TS 35/7.5 and TS 32, Rated cross-section: 50 mm<sup>2</sup>, Width: 20 mm, Colour: Beige

Article number	Article name	GTIN (EAN)	Packaging unit
<u>1473.2</u>	RK 50 Ex BG	4044211107901	10

---