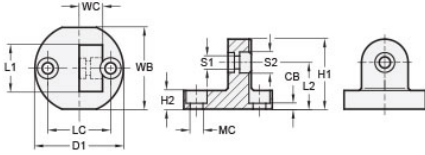




MT10:12-CBSW-20-AN

Ruland Swivel Clamp Connector Base, Ruland Swivel Thru Hole 5.5mm, Clamp Width 20mm, Clamp Screw M5, Black Anodized Aluminum



Description

Ruland MT10:12-CBSW-20-AN is a swivel clamp connector base with a 35mm base width, 38mm base diameter, 20mm clamp width, M5 clamp screw, and 30mm overall length. It is designed to fit with MT10, MT12, and MT10:12 swivel clamp joints, t-swivel clamp joints, and swivel mounts with the same width and height. When combined with a swivel clamp or connector MT10:12-CBSW-20-AN is an ideal articulating mounting solution for screens, sensors, reflectors, plexiglass machine guards, and other components that require frequent adjustments. An MT10:12-SWALK-M5-20 adjustable clamping handle can be used to join it to clamps and connectors for rapid repositioning without the use of tools. It is aluminum with a black anodized finish and screws are 304 stainless steel for added corrosion resistance when compared to unplated types. MT10:12-CBSW-20-AN can be permanently installed on extruded aluminum frames, sheet metal, and other surfaces using M5 hardware or the user can opt for portability by using MAGNET-43-27 magnetic base. It is manufactured by Otto Ganter, inventoried by Ruland, and RoHS3 compliant.

Product Specifications

Base Width WB	35 mm	Base Height H2	8 mm
Base Diameter D1	38 mm	Clamp Length L1	20 mm
Clamp Width WC	10 mm	Overall Height H1	30 mm
Center To Center LC	27 mm	Edge To Center L2	20 mm
Mounting Counterbore Diameter MC	M5	Counterbore to Base CB	2.5 mm
Swivel Counterbore 1 Diameter S1	5.5 mm	Swivel Counterbore 2 Diameter S2	9 mm
Material Specification	Anodized Aluminum	Manufacturer	JW Winco/ Otto Ganter
Country of Origin	Germany	Weight (lbs)	0.071700
UPC	634529231401	Tariff Code	7609.00.0000
UNSPC	31162908		