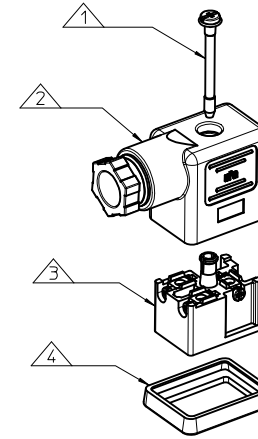
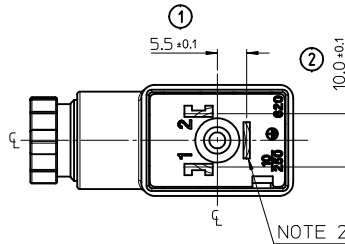
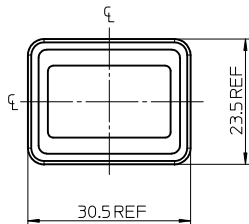
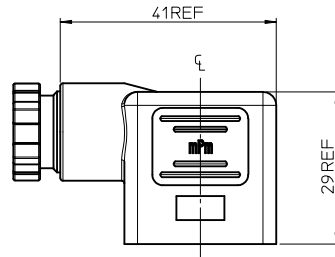
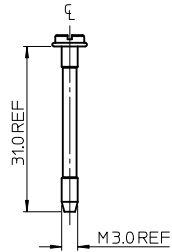


PART No.	mPm PART No.	DESCRIPTION
1210230569	C62207N21	TYPE B 2P PG7 BLACK NBR PROFILE GASKET
1210230571	C62209N21	TYPE B 2P PG9 BLACK NBR PROFILE GASKET
1210230572	C62209N22	TYPE B 2P PG9 BLACK NBR FLAT GASKET
1210230573	C62209N61	TYPE B 2P PG9 BLACK NBR PROFILE GASKET
1210230822	C622M6N21	TYPE B 2P M16x1.5 BLACK NBR PROFILE GASKET
1210240342	C62209N2114	TYPE B 2P PG9 BLACK NBR PROFILE GASKET IN NEUTRAL BAG
1210240343	C62209N215A	TYPE B 2P PG9 BLACK NBR PROFILE GASKET



ITEM	DESCRIPTION
1	SCREW
2	COVER ASSEMBLY
3	INSERT ASSEMBLY
4	GASKET

C62209N21\* \* \*

SERIES \_\_\_\_\_  
 C62= INTERNAL THREAD FORM B  
 POLES \_\_\_\_\_  
 2= 2 POLE  
 THREAD SIZE \_\_\_\_\_  
 07= PG7, 09= PG9 11= PG11, M2= M12x1.5, M6= M16x1.5  
 MATERIAL AND HOUSING COLOUR \_\_\_\_\_  
 G= PA6 GRAY, N= PA6 BLACK, W= PA6 BLACK V0, T= PA12 TRANSPARENT  
 GROUND POSITION \_\_\_\_\_  
 0= UNMOUNTED, 2= H12, 6= H6  
 SCREW AND GASKET \_\_\_\_\_  
 1= NBR PROFILE GASKET & SCREW  
 2= NBR FLAT GASKET & SCREW  
 3= WHITE SILICON PROFILE GASKET & SCREW  
 4= WHITE SILICON FLAT GASKET & SCREW  
 NON STANDARD COMPONENTS \_\_\_\_\_  
 14= PACKED IN NEUTRAL BAG  
 5A= SINGLE BAGGED, PACKED QTYS ACCORDING TO BOX SIZE

NOTES:

- PLEASE SEE CHART FOR CURRENTLY CONFIGURED PART NUMBERS. FOR SPECIFIC PART NUMBERS PLEASE CONTACT SALES OR CONSULT THE INTELLIGENT PART NUMBERS IN THE TABLE ATTACHED.
- EARTH POSITION SHOWN, H12.
- FOR PACKAGING SPEC SEE PACKAGING SPEC PK-121023-C62.
- PRODUCT SPEC: SEE PS-121201-001

LAST INSPECTION NUMBER 2

REV	DESCRIPTION	QUALITY SYMBOLS	GENERAL TOLERANCES (UNLESS SPECIFIED)		DIMENSION STYLE		SCALE	DESIGN UNITS	THIRD ANGLE PROJECTION	
			mm	INCH	MM ONLY	1.5:1	METRIC	□		
A	ORIGINAL RELEASE EC NO: WEU2011-0579 DRAWN: JOCONNOR 2011/05/12 CHKD: APPR: EFOLAN 2011/05/27	▽=0 ▽=0	4 PLACES ± ---	± ---	DRAWN BY	DATE	TITLE	C62 SERIES INTERNAL THREAD		
			3 PLACES ± ---	± ---	JOCONNOR	2011/05/12				
			2 PLACES ± 0.1	± ---	CHECKED BY	DATE				
			1 PLACE ± 0.2	± ---	DMAHER	2011/05/12				
			ANGULAR ± ---°		APPROVED BY	DATE				
					EFOLAN	2011/05/27				
					MATERIAL NO.			MOLEX INCORPORATED		
								DOCUMENT NO. SD-121023-004		SHEET NO. 1 OF 1
					DRAFT WHERE APPLICABLE MUST REMAIN WITHIN DIMENSIONS	SIZE A 2	THIS DRAWING CONTAINS INFORMATION THAT IS PROPRIETARY TO MOLEX INCORPORATED AND SHOULD NOT BE USED WITHOUT WRITTEN PERMISSION			