



Electrical Specifications

Center Frequency: 2535 MHz
Bandwidth: 70 MHz
Pass Band: 2500-2570 MHz
Insertion Loss in BW: 4.0 dB Max
Ripple in BW: 1.0 dB Max
VSWR in BW: 1.70:1 Max
Attenuation: >38 dB @ 2450 MHz
 >28 dB @ 2620 MHz
In/Out Impedance: 50 Ω
Input Power: 1 W Avg

Mechanical

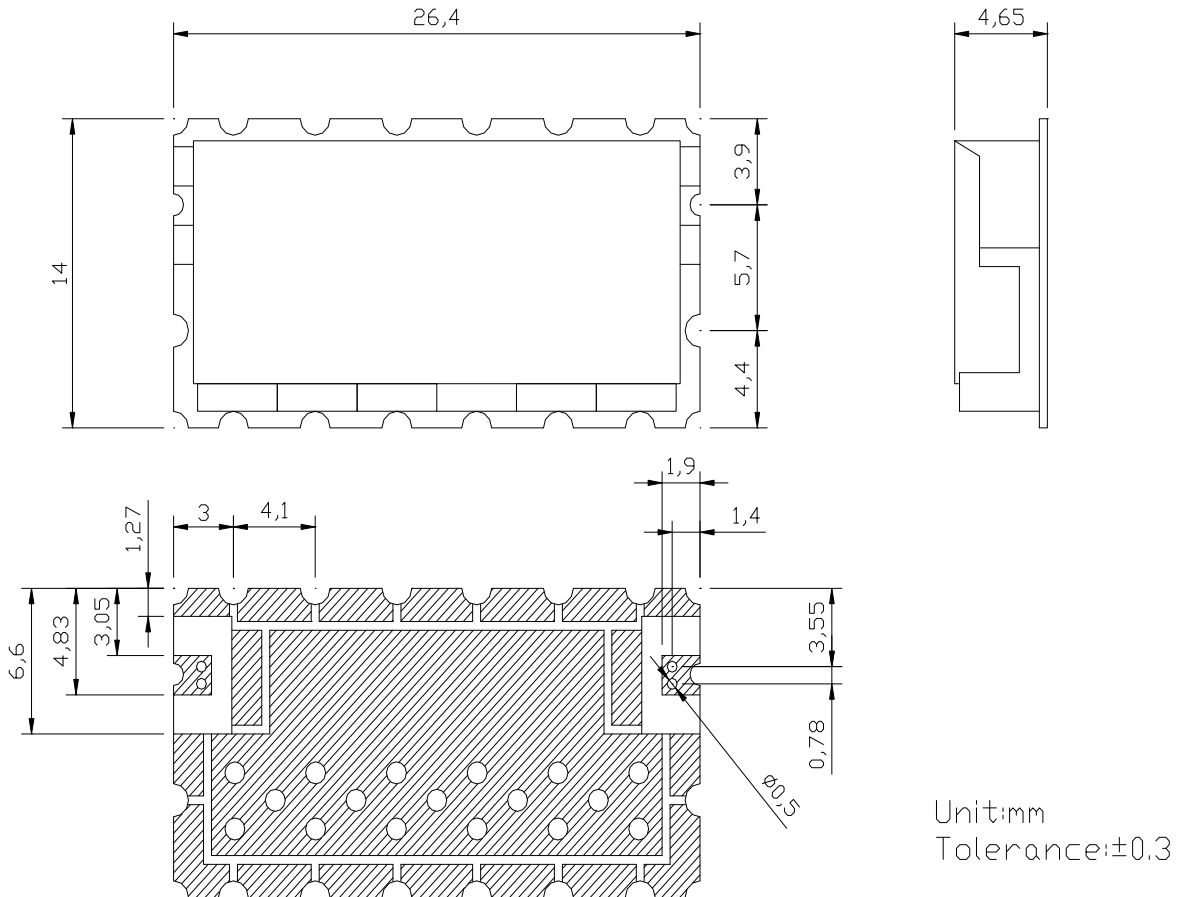
Mounting Method: SMT
Dimensions: 26.4 x 14.0 x 4.65 mm

Environmental

Operating Temperature: -20 to +70° C
Storage Temperature: -30 to +80° C
Shock: 20 G. 11 ms
Vibration: 20 G. 5 to 200 MHz

This product is RoHS compliant.

Outline Drawing:



Unit:mm
Tolerance:±0.3