

Cable entry with TPE seal, Mounting type: Screws, Length: 81 mm, Width: 64 mm, IP 66, Colour: Black

RAL: 9005

Business data

| | |
|--|----------------|
| Article number | 28880.4 |
| Article name | KDSI-SR 1-4 BK |
| GTIN (EAN) | 4044211243807 |
| Packaging unit | 1 |
| Quantity unit | PC |
| Weight per piece (not including packaging) | 59 g |
| Weight per piece (including packaging) | 89.6 g |
| Unit of weight | G |
| Customs number | 39259020 |
| Country of origin | DE |
| Product description | Cable Entry |
| Colour | Black |

Technical data

Dimensions

| | |
|-------------------------------------|---------|
| Length | 81 mm |
| Length of wall cutout | 46 mm |
| Width | 64 mm |
| Width of wall cutout | 36 mm |
| Height | 24.2 mm |
| Installation height | 24.2 mm |
| Diameter of the screw holes | 5.5 mm |
| Distance between wall cut-outs min. | 70 mm |

Materials

| | |
|---------------------------|---------------|
| Material | Polyamide 6.6 |
| Glass-fibre reinforced | ✓ |
| Flammability class UL 94 | V-0 |
| Working temperature, min. | -40 °C |
| Working temperature, max. | 120 °C |
| Sealing material | TPE |
| Halogen-free | ✓ |
| Silicone-free | ✓ |

Further technical data

| | |
|-----------------------------|---|
| Mounting type | Screws |
| Degree of protection | IP66 |
| NEMA Type | 1, 12, 4x (indoor use only) |
| Number of screw holes | 4 |
| Fixing screws | M 5 (ISO 4762 / DIN 912) |
| Torque of the fixing screws | 3 Nm |
| Assembly instruction | Also suitable for mounting on extended wall cutouts 46 mm x 46 mm. |

Environmental Product Compliance

| | |
|--------------------------------|------------|
| REACH Conform | yes |
| REACH Reference date | 2023-01-17 |
| REACH Candidate Substance Note | No |
| RoHS Conform | yes |

Approvals

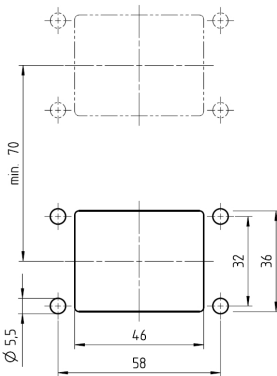
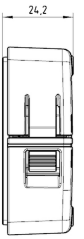
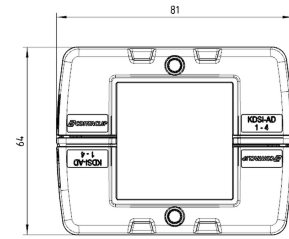
cUL Recognized

| | |
|-----------------|-----------------|
| cUL approval | C22.2 No. 14-18 |
| cUL File Number | E489821 |
| cUL Recognized | 1 |

UL Recognized

| | |
|----------------|-----------------------------|
| UL approval | UL 508A |
| UL File Number | E489821 |
| UL Recognized | 1 |
| UL Type Rating | 1, 12, 4x (indoor use only) |

Media



Accessories

Inlays



Cable entry, Inlay, Mounting type: Plug in, IP 66, Colour: Black

| Article number | Article name | GTIN (EAN) | Packaging unit |
|-------------------------|----------------|---------------|----------------|
| 28518.4 | KDS-Inlay 4 BK | 4044211210861 | 5 ST |

Actuating tool



Using the KDS BW1 actuating tool, the seals can be conveniently mounted in and dismantled from the frame. The ergonomic grip and the special shape enable simple and precise installations, especially for cabling applications in confined spaces., Material: Polyamide

| Article number | Article name | GTIN (EAN) | Packaging unit |
|-------------------------|--------------|---------------|----------------|
| 28622.0 | KDS BW 1 | 4044211216597 | 1 ST |

Locking mechanism



Optional external locking element to secure the sealing elements against pressing out without tools, Mounting type: Plug in

| Article number | Article name | GTIN (EAN) | Packaging unit |
|-------------------------|--------------|---------------|----------------|
| 28894.4 | KDSI-AVR BK | 4044211242190 | 20 ST |

EMC brackets



Shield-connection rail enabling mounting of shield connection clips directly on cable entry system KDS, Mounting type: Screw, Length: 35,3 mm, Width: 68 mm, Height: 16 mm, Profile: 10x3 mm

| Article number | Article name | GTIN (EAN) | Packaging unit |
|-------------------------|-----------------|---------------|----------------|
| 28623.0 | KDS-EMV-SAB 1-4 | 4044211219628 | 1 ST |

Sheet-metal puncher

28880.4 KDSI-SR 1-4 BK



Sheet-metal puncher

| Article number | Article name | GTIN (EAN) | Packaging unit |
|----------------|---------------|---------------|----------------|
| <u>28674.0</u> | BL KDS-SR 1-4 | 4044211217440 | 1 ST |



Sheet metal punch for rectangular openings, Dimensions opening: 46 x 46 mm, Maximum wall thickness: 2.0 mm for stainless steel sheet, Material: steel

| Article number | Article name | GTIN (EAN) | Packaging unit |
|----------------|------------------|---------------|----------------|
| <u>28683.0</u> | BL-VA KDS-SR 1-4 | 4044211218782 | 1 ST |

Small Seals



Seal, Mounting type: Plug in, Length x width: 20.3 mm, Max. cable diameter: 7 mm, IP 66, Colour: Grey

| Article number | Article name | GTIN (EAN) | Packaging unit |
|----------------|---------------|---------------|----------------|
| <u>28567.6</u> | KDS-DE 6-7 GR | 4044211211059 | 10 ST |



Seal, Mounting type: Plug in, Length x width: 20.3 mm, Max. cable diameter: 8 mm, IP 66, Colour: Grey

| Article number | Article name | GTIN (EAN) | Packaging unit |
|----------------|---------------|---------------|----------------|
| <u>28568.6</u> | KDS-DE 7-8 GR | 4044211211066 | 10 ST |



Seal, Mounting type: Plug in, Length x width: 20.3 mm, Max. cable diameter: 9 mm, IP 66, Colour: Grey

| Article number | Article name | GTIN (EAN) | Packaging unit |
|----------------|---------------|---------------|----------------|
| <u>28569.6</u> | KDS-DE 8-9 GR | 4044211211073 | 10 ST |



Seal, Mounting type: Plug in, Length x width: 20.3 mm, Max. cable diameter: 10 mm, IP 66, Colour: Grey

| Article number | Article name | GTIN (EAN) | Packaging unit |
|----------------|----------------|---------------|----------------|
| <u>28570.6</u> | KDS-DE 9-10 GR | 4044211211080 | 10 ST |

28880.4 KDSI-SR 1-4 BK

Small Seals



Seal, Mounting type: Plug in, Length x width: 20.3 mm, Max. cable diameter: 11 mm, IP 66, Colour: Grey

| Article number | Article name | GTIN (EAN) | Packaging unit |
|----------------|-----------------|---------------|----------------|
| <u>28571.6</u> | KDS-DE 10-11 GR | 4044211211097 | 10 ST |



Seal, Mounting type: Plug in, Length x width: 20.3 mm, Max. cable diameter: 12 mm, IP 66, Colour: Grey

| Article number | Article name | GTIN (EAN) | Packaging unit |
|----------------|-----------------|---------------|----------------|
| <u>28572.6</u> | KDS-DE 11-12 GR | 4044211211103 | 10 ST |



Seal, Mounting type: Plug in, Length x width: 20.3 mm, Max. cable diameter: 13 mm, IP 66, Colour: Grey

| Article number | Article name | GTIN (EAN) | Packaging unit |
|----------------|-----------------|---------------|----------------|
| <u>28573.6</u> | KDS-DE 12-13 GR | 4044211215224 | 10 ST |



Seal, Mounting type: Plug in, Length x width: 20.3 mm, Max. cable diameter: 3 mm, IP 66, Colour: Grey

| Article number | Article name | GTIN (EAN) | Packaging unit |
|----------------|---------------|---------------|----------------|
| <u>28563.6</u> | KDS-DE 2-3 GR | 4044211211011 | 10 ST |



Seal, Mounting type: Plug in, Length x width: 20.3 mm, Max. cable diameter: 4 mm, IP 66, Colour: Grey

| Article number | Article name | GTIN (EAN) | Packaging unit |
|----------------|---------------|---------------|----------------|
| <u>28564.6</u> | KDS-DE 3-4 GR | 4044211211028 | 10 ST |



Seal, Mounting type: Plug in, Length x width: 20.3 mm, Max. cable diameter: 5 mm, IP 66, Colour: Grey

| Article number | Article name | GTIN (EAN) | Packaging unit |
|----------------|---------------|---------------|----------------|
| <u>28565.6</u> | KDS-DE 4-5 GR | 4044211211035 | 10 ST |



Seal, Mounting type: Plug in, Length x width: 20.3 mm, Max. cable diameter: 6 mm, IP 66, Colour: Grey

| Article number | Article name | GTIN (EAN) | Packaging unit |
|----------------|---------------|---------------|----------------|
| <u>28566.6</u> | KDS-DE 5-6 GR | 4044211211042 | 10 ST |

Small Seals



Seal, Mounting type: Plug in, Length x width: 20.3 mm, Max. cable diameter: 14 mm, IP 66, Colour: Grey

| Article number | Article name | GTIN (EAN) | Packaging unit |
|----------------|-----------------|---------------|----------------|
| <u>28574.6</u> | KDS-DE 13-14 GR | 4044211215231 | 10 ST |



Seal, Mounting type: Plug in, Length x width: 20.3 mm, Max. cable diameter: 5 mm, IP 66, Colour: Grey

| Article number | Article name | GTIN (EAN) | Packaging unit |
|----------------|-----------------|---------------|----------------|
| <u>28595.6</u> | KDS-DE 2X4-5 GR | 4044211215682 | 10 ST |



Seal, Mounting type: Plug in, Length x width: 20.3 mm, Max. cable diameter: 6 mm, IP 66, Colour: Grey

| Article number | Article name | GTIN (EAN) | Packaging unit |
|----------------|-----------------|---------------|----------------|
| <u>28596.6</u> | KDS-DE 2X5-6 GR | 4044211215699 | 10 ST |



Seal, Mounting type: Plug in, Length x width: 20.3 mm, Max. cable diameter: 3 mm, IP 66, Colour: Grey

| Article number | Article name | GTIN (EAN) | Packaging unit |
|----------------|-----------------|---------------|----------------|
| <u>28597.6</u> | KDS-DE 4X2-3 GR | 4044211215705 | 10 ST |



Seal, Mounting type: Plug in, Length x width: 20.3 mm, Max. cable diameter: 4 mm, IP 66, Colour: Grey

| Article number | Article name | GTIN (EAN) | Packaging unit |
|----------------|-----------------|---------------|----------------|
| <u>28598.6</u> | KDS-DE 4X3-4 GR | 4044211215712 | 10 ST |



Seal, Mounting type: Plug in, Length x width: 20.3 mm, IP 66, Colour: Black

| Article number | Article name | GTIN (EAN) | Packaging unit |
|----------------|-----------------|---------------|----------------|
| <u>28560.4</u> | KDS-DE/2XASI BK | 4044211215675 | 10 ST |



Seal dummy, Mounting type: Plug in, Length x width: 20.3 mm, IP 66, Colour: Grey

| Article number | Article name | GTIN (EAN) | Packaging unit |
|----------------|--------------|---------------|----------------|
| <u>28561.6</u> | KDS-DE/B GR | 4044211211004 | 10 ST |

28880.4 KDSI-SR 1-4 BK

Small Seals



Seal, Mounting type: Plug in, Length x width: 20.3 mm, Max. cable diameter: 2 mm, IP 66, Colour: Grey

| Article number | Article name | GTIN (EAN) | Packaging unit |
|----------------|-----------------|---------------|----------------|
| <u>28562.6</u> | KDS-DE 1,5-2 GR | 4044211209988 | 10 ST |



Seal, Mounting type: Plug in, Length x width: 20.3 mm, Max. cable diameter: 6.5 mm, IP 66, Colour: Black

| Article number | Article name | GTIN (EAN) | Packaging unit |
|----------------|-----------------|---------------|----------------|
| <u>28682.4</u> | KDS-DE 2X6,5 BK | 4044211219536 | 10 ST |



Seal, Mounting type: Plug in, Length x width: 20.3 mm, Max. cable diameter: 6.5 mm, IP 66, Colour: Black

| Article number | Article name | GTIN (EAN) | Packaging unit |
|----------------|-----------------|---------------|----------------|
| <u>28687.4</u> | KDS-DE 3X5-6 BK | 4044211220501 | 10 ST |



Seal, Mounting type: Plug in, Length x width: 20.3 mm, Max. cable diameter: 2 mm, IP 66, Colour: Grey

| Article number | Article name | GTIN (EAN) | Packaging unit |
|----------------|--------------|---------------|----------------|
| <u>28696.6</u> | KDS-DE 2 GR | 4044211220884 | 10 ST |



Seal, Mounting type: Plug in, Length x width: 20.3 mm, Max. cable diameter: 3 mm, IP 66, Colour: Black

| Article number | Article name | GTIN (EAN) | Packaging unit |
|----------------|--------------|---------------|----------------|
| <u>28697.4</u> | KDS-DE 3 BK | 4044211220891 | 10 ST |



Seal, Mounting type: Plug in, Length x width: 20.3 mm, Max. cable diameter: 3 mm, IP 66, Colour: Grey

| Article number | Article name | GTIN (EAN) | Packaging unit |
|----------------|--------------|---------------|----------------|
| <u>28698.6</u> | KDS-DE 3 GR | 4044211220907 | 10 ST |



Seal, Mounting type: Plug in, Length x width: 20.3 mm, Max. cable diameter: 6.1 mm, IP 66, Colour: Grey

| Article number | Article name | GTIN (EAN) | Packaging unit |
|----------------|---------------|---------------|----------------|
| <u>28762.6</u> | KDS-DE 4X6 GR | 4044211226459 | 10 ST |

28880.4 KDSI-SR 1-4 BK

Small Seals



Seal, Mounting type: Plug in, Length x width: 20.3 mm, Max. cable diameter: 6.1 mm, IP 66, Colour: Black

| Article number | Article name | GTIN (EAN) | Packaging unit |
|-------------------------|---------------|---------------|----------------|
| 28763.4 | KDS-DE 4X6 BK | 4044211226466 | 10 ST |



Seal, Mounting type: Plug in, Length x width: 20.3 mm, IP 66, Colour: Grey

| Article number | Article name | GTIN (EAN) | Packaging unit |
|-------------------------|-----------------|---------------|----------------|
| 28600.6 | KDS-DE/2XASI GR | 4044211215736 | 10 ST |



Seal, Mounting type: Plug in, Length x width: 20.3 mm, Max. cable diameter: 4.5 mm, IP 66, Colour: Grey

| Article number | Article name | GTIN (EAN) | Packaging unit |
|-------------------------|-----------------|---------------|----------------|
| 28606.6 | KDS-DE 4X4,5 GR | 4044211216252 | 10 ST |



Seal, Mounting type: Plug in, Length x width: 20.3 mm, Max. cable diameter: 6.5 mm, IP 66, Colour: Grey

| Article number | Article name | GTIN (EAN) | Packaging unit |
|-------------------------|-----------------|---------------|----------------|
| 28607.6 | KDS-DE 2X6,5 GR | 4044211216238 | 10 ST |



Seal, Mounting type: Plug in, Length x width: 20.3 mm, Max. cable diameter: 15 mm, IP 66, Colour: Black

| Article number | Article name | GTIN (EAN) | Packaging unit |
|-------------------------|-----------------|---------------|----------------|
| 28608.4 | KDS-DE 14-15 BK | 4044211219314 | 10 ST |



Seal, Mounting type: Plug in, Length x width: 20.3 mm, Max. cable diameter: 15 mm, IP 66, Colour: Grey

| Article number | Article name | GTIN (EAN) | Packaging unit |
|-------------------------|-----------------|---------------|----------------|
| 28609.6 | KDS-DE 14-15 GR | 4044211219307 | 10 ST |



Seal, Mounting type: Plug in, Length x width: 20.3 mm, Max. cable diameter: 16 mm, IP 66, Colour: Black

| Article number | Article name | GTIN (EAN) | Packaging unit |
|-------------------------|-----------------|---------------|----------------|
| 28670.4 | KDS-DE 15-16 BK | 4044211219321 | 10 ST |

28880.4 KDSI-SR 1-4 BK

Small Seals



Seal, Mounting type: Plug in, Length x width: 20.3 mm, Max. cable diameter: 17 mm, IP 66, Colour: Grey

| Article number | Article name | GTIN (EAN) | Packaging unit |
|----------------|-----------------|---------------|----------------|
| <u>28671.6</u> | KDS-DE 15-16 GR | 4044211219338 | 10 ST |



Seal, Mounting type: Plug in, Length x width: 20.3 mm, Max. cable diameter: 5 mm, IP 66, Colour: Black

| Article number | Article name | GTIN (EAN) | Packaging unit |
|----------------|---------------|---------------|----------------|
| <u>28672.4</u> | KDS-DE 4X5 BK | 4044211219345 | 10 ST |



Seal, Mounting type: Plug in, Length x width: 20.3 mm, Max. cable diameter: 5 mm, IP 66, Colour: Grey

| Article number | Article name | GTIN (EAN) | Packaging unit |
|----------------|---------------|---------------|----------------|
| <u>28673.6</u> | KDS-DE 4X5 GR | 4044211219352 | 10 ST |



Seal, Mounting type: Plug in, Length x width: 20.3 mm, Max. cable diameter: 4.5 mm, IP 66, Colour: Black

| Article number | Article name | GTIN (EAN) | Packaging unit |
|----------------|-----------------|---------------|----------------|
| <u>28681.4</u> | KDS-DE 4X4,5 BK | 4044211219543 | 10 ST |



Seal, Mounting type: Plug in, Length x width: 20.3 mm, Max. cable diameter: 11 mm, IP 66, Colour: Black

| Article number | Article name | GTIN (EAN) | Packaging unit |
|----------------|-----------------|---------------|----------------|
| <u>28530.4</u> | KDS-DE 10-11 BK | 4044211210960 | 10 ST |



Seal, Mounting type: Plug in, Length x width: 20.3 mm, Max. cable diameter: 12 mm, IP 66, Colour: Black

| Article number | Article name | GTIN (EAN) | Packaging unit |
|----------------|-----------------|---------------|----------------|
| <u>28531.4</u> | KDS-DE 11-12 BK | 4044211210977 | 10 ST |



Seal, Mounting type: Plug in, Length x width: 20.3 mm, Max. cable diameter: 13 mm, IP 66, Colour: Black

| Article number | Article name | GTIN (EAN) | Packaging unit |
|----------------|-----------------|---------------|----------------|
| <u>28532.4</u> | KDS-DE 12-13 BK | 4044211210984 | 10 ST |

28880.4 KDSI-SR 1-4 BK

Small Seals



Seal, Mounting type: Plug in, Length x width: 20.3 mm, Max. cable diameter: 14 mm, IP 66, Colour: Black

| Article number | Article name | GTIN (EAN) | Packaging unit |
|----------------|-----------------|---------------|----------------|
| <u>28533.4</u> | KDS-DE 13-14 BK | 4044211210991 | 10 ST |



Seal, Mounting type: Plug in, Length x width: 20.3 mm, Max. cable diameter: 11 mm, IP 66, Colour: Black

| Article number | Article name | GTIN (EAN) | Packaging unit |
|----------------|------------------|---------------|----------------|
| <u>28553.4</u> | KDS-DE/K 2-11 BK | 4044211216092 | 10 ST |



Seal, Mounting type: Plug in, Length x width: 20.3 mm, Max. cable diameter: 5 mm, IP 66, Colour: Black

| Article number | Article name | GTIN (EAN) | Packaging unit |
|----------------|-----------------|---------------|----------------|
| <u>28555.4</u> | KDS-DE 2X4-5 BK | 4044211215620 | 10 ST |



Seal, Mounting type: Plug in, Length x width: 20.3 mm, Max. cable diameter: 6 mm, IP 66, Colour: Black

| Article number | Article name | GTIN (EAN) | Packaging unit |
|----------------|-----------------|---------------|----------------|
| <u>28556.4</u> | KDS-DE 2X5-6 BK | 4044211215637 | 10 ST |



Seal, Mounting type: Plug in, Length x width: 20.3 mm, Max. cable diameter: 3 mm, IP 66, Colour: Black

| Article number | Article name | GTIN (EAN) | Packaging unit |
|----------------|-----------------|---------------|----------------|
| <u>28557.4</u> | KDS-DE 4X2-3 BK | 4044211215644 | 10 ST |



Seal, Mounting type: Plug in, Length x width: 20.3 mm, Max. cable diameter: 4 mm, IP 66, Colour: Black

| Article number | Article name | GTIN (EAN) | Packaging unit |
|----------------|-----------------|---------------|----------------|
| <u>28558.4</u> | KDS-DE 4X3-4 BK | 4044211215651 | 10 ST |



Seal, Mounting type: Plug in, Length x width: 20.3 mm, IP 66, Colour: Black

| Article number | Article name | GTIN (EAN) | Packaging unit |
|----------------|-----------------|---------------|----------------|
| <u>28559.4</u> | KDS-DE/1XASI BK | 4044211215668 | 10 ST |

Small Seals



Seal dummy, Mounting type: Plug in, Length x width: 20.3 mm, IP 66, Colour: Black

| Article number | Article name | GTIN (EAN) | Packaging unit |
|----------------|--------------|---------------|----------------|
| <u>28520.4</u> | KDS-DE/B BK | 4044211210878 | 10 ST |



Seal, Mounting type: Plug in, Length x width: 20.3 mm, Max. cable diameter: 2 mm, IP 66, Colour: Black

| Article number | Article name | GTIN (EAN) | Packaging unit |
|----------------|-----------------|---------------|----------------|
| <u>28521.4</u> | KDS-DE 1,5-2 BK | 4044211210007 | 10 ST |



Seal, Mounting type: Plug in, Length x width: 20.3 mm, Max. cable diameter: 3 mm, IP 66, Colour: Black

| Article number | Article name | GTIN (EAN) | Packaging unit |
|----------------|---------------|---------------|----------------|
| <u>28522.4</u> | KDS-DE 2-3 BK | 4044211210885 | 10 ST |



Seal, Mounting type: Plug in, Length x width: 20.3 mm, Max. cable diameter: 4 mm, IP 66, Colour: Black

| Article number | Article name | GTIN (EAN) | Packaging unit |
|----------------|---------------|---------------|----------------|
| <u>28523.4</u> | KDS-DE 3-4 BK | 4044211210892 | 10 ST |



Seal, Mounting type: Plug in, Length x width: 20.3 mm, Max. cable diameter: 5 mm, IP 66, Colour: Black

| Article number | Article name | GTIN (EAN) | Packaging unit |
|----------------|---------------|---------------|----------------|
| <u>28524.4</u> | KDS-DE 4-5 BK | 4044211210908 | 10 ST |



Seal, Mounting type: Plug in, Length x width: 20.3 mm, Max. cable diameter: 6 mm, IP 66, Colour: Black

| Article number | Article name | GTIN (EAN) | Packaging unit |
|----------------|---------------|---------------|----------------|
| <u>28525.4</u> | KDS-DE 5-6 BK | 4044211210915 | 10 ST |



Seal, Mounting type: Plug in, Length x width: 20.3 mm, Max. cable diameter: 7 mm, IP 66, Colour: Black

| Article number | Article name | GTIN (EAN) | Packaging unit |
|----------------|---------------|---------------|----------------|
| <u>28526.4</u> | KDS-DE 6-7 BK | 4044211210922 | 10 ST |

28880.4 KDSI-SR 1-4 BK

Small Seals



Seal, Mounting type: Plug in, Length x width: 20.3 mm, Max. cable diameter: 8 mm, IP 66, Colour: Black

| Article number | Article name | GTIN (EAN) | Packaging unit |
|----------------|---------------|---------------|----------------|
| <u>28527.4</u> | KDS-DE 7-8 BK | 4044211210939 | 10 ST |



Seal, Mounting type: Plug in, Length x width: 20.3 mm, Max. cable diameter: 9 mm, IP 66, Colour: Black

| Article number | Article name | GTIN (EAN) | Packaging unit |
|----------------|---------------|---------------|----------------|
| <u>28528.4</u> | KDS-DE 8-9 BK | 4044211210946 | 10 ST |



Seal, Mounting type: Plug in, Length x width: 20.3 mm, Max. cable diameter: 10 mm, IP 66, Colour: Black

| Article number | Article name | GTIN (EAN) | Packaging unit |
|----------------|----------------|---------------|----------------|
| <u>28529.4</u> | KDS-DE 9-10 BK | 4044211210953 | 10 ST |



Seal, Mounting type: Plug in, Length x width: 20.3 mm, Max. cable diameter: 6 mm, IP 66, Colour: Grey

| Article number | Article name | GTIN (EAN) | Packaging unit |
|----------------|-----------------|---------------|----------------|
| <u>28688.6</u> | KDS-DE 3X5-6 GR | 4044211220518 | 10 ST |



Seal, Mounting type: Plug in, Length x width: 20.3 mm, Max. cable diameter: 7 mm, IP 66, Colour: Black

| Article number | Article name | GTIN (EAN) | Packaging unit |
|----------------|---------------|---------------|----------------|
| <u>28689.4</u> | KDS-DE 2X7 BK | 4044211220815 | 10 ST |



Seal, Mounting type: Plug in, Length x width: 20.3 mm, Max. cable diameter: 7 mm, IP 66, Colour: Grey

| Article number | Article name | GTIN (EAN) | Packaging unit |
|----------------|---------------|---------------|----------------|
| <u>28690.6</u> | KDS-DE 2X7 GR | 4044211220822 | 10 ST |



Seal, Mounting type: Plug in, Length x width: 20.3 mm, Max. cable diameter: 8 mm, IP 66, Colour: Black

| Article number | Article name | GTIN (EAN) | Packaging unit |
|----------------|---------------|---------------|----------------|
| <u>28691.4</u> | KDS-DE 2X8 BK | 4044211220839 | 10 ST |

28880.4 KDSI-SR 1-4 BK

Small Seals



Seal, Mounting type: Plug in, Length x width: 20.3 mm, Max. cable diameter: 8 mm, IP 66, Colour: Grey

| Article number | Article name | GTIN (EAN) | Packaging unit |
|----------------|---------------|---------------|----------------|
| <u>28692.6</u> | KDS-DE 2X8 GR | 4044211220846 | 10 ST |



Seal, Mounting type: Plug in, Length x width: 20.3 mm, Max. cable diameter: 1.5 mm, IP 66, Colour: Black

| Article number | Article name | GTIN (EAN) | Packaging unit |
|----------------|---------------|---------------|----------------|
| <u>28693.4</u> | KDS-DE 1,5 BK | 4044211220853 | 10 ST |



Seal, Mounting type: Plug in, Length x width: 20.3 mm, Max. cable diameter: 1.5 mm, IP 66, Colour: Grey

| Article number | Article name | GTIN (EAN) | Packaging unit |
|----------------|---------------|---------------|----------------|
| <u>28694.6</u> | KDS-DE 1,5 GR | 4044211220860 | 10 ST |



Seal, Mounting type: Plug in, Length x width: 20.3 mm, Max. cable diameter: 2 mm, IP 66, Colour: Black

| Article number | Article name | GTIN (EAN) | Packaging unit |
|----------------|--------------|---------------|----------------|
| <u>28695.4</u> | KDS-DE 2 BK | 4044211220877 | 10 ST |

Big Seals



Seal, Mounting type: Plug in, Length x width: 42.8 mm, Max. cable diameter: 20 mm, IP 66, Colour: Black

| Article number | Article name | GTIN (EAN) | Packaging unit |
|----------------|------------------|---------------|----------------|
| <u>28540.4</u> | KDS-DEG 19-20 BK | 4044211215354 | 10 ST |



Seal, Mounting type: Plug in, Length x width: 42.8 mm, Max. cable diameter: 33 mm, IP 66, Colour: Black

| Article number | Article name | GTIN (EAN) | Packaging unit |
|----------------|------------------|---------------|----------------|
| <u>28601.4</u> | KDS-DEG 32-33 BK | 4044211215613 | 10 ST |

28880.4 KDSI-SR 1-4 BK

Big Seals



Seal dummy, Mounting type: Plug in, Length x width: 42.8 mm, IP 66, Colour: Black

| Article number | Article name | GTIN (EAN) | Packaging unit |
|-------------------------|--------------|---------------|----------------|
| 28534.4 | KDS-DEG/B BK | 4044211215255 | 10 ST |



Seal, Mounting type: Plug in, Length x width: 42.8 mm, Max. cable diameter: 15 mm, IP 66, Colour: Black

| Article number | Article name | GTIN (EAN) | Packaging unit |
|-------------------------|------------------|---------------|----------------|
| 28535.4 | KDS-DEG 14-15 BK | 4044211209995 | 10 ST |



Seal, Mounting type: Plug in, Length x width: 42.8 mm, Max. cable diameter: 16 mm, IP 66, Colour: Black

| Article number | Article name | GTIN (EAN) | Packaging unit |
|-------------------------|------------------|---------------|----------------|
| 28536.4 | KDS-DEG 15-16 BK | 4044211215279 | 10 ST |



Seal, Mounting type: Plug in, Length x width: 42.8 mm, Max. cable diameter: 17 mm, IP 66, Colour: Black

| Article number | Article name | GTIN (EAN) | Packaging unit |
|-------------------------|------------------|---------------|----------------|
| 28537.4 | KDS-DEG 16-17 BK | 4044211215293 | 10 ST |



Seal, Mounting type: Plug in, Length x width: 42.8 mm, Max. cable diameter: 18 mm, IP 66, Colour: Black

| Article number | Article name | GTIN (EAN) | Packaging unit |
|-------------------------|------------------|---------------|----------------|
| 28538.4 | KDS-DEG 17-18 BK | 4044211215316 | 10 ST |



Seal, Mounting type: Plug in, Length x width: 42.8 mm, Max. cable diameter: 24 mm, IP 66, Colour: Black

| Article number | Article name | GTIN (EAN) | Packaging unit |
|-------------------------|------------------|---------------|----------------|
| 28544.4 | KDS-DEG 23-24 BK | 4044211215439 | 10 ST |



Seal, Mounting type: Plug in, Length x width: 42.8 mm, Max. cable diameter: 20 mm, IP 66, Colour: Grey

| Article number | Article name | GTIN (EAN) | Packaging unit |
|-------------------------|------------------|---------------|----------------|
| 28581.6 | KDS-DEG 19-20 GR | 4044211215347 | 10 ST |

28880.4 KDSI-SR 1-4 BK

Big Seals



Seal, Mounting type: Plug in, Length x width: 42.8 mm, Max. cable diameter: 21 mm, IP 66, Colour: Grey

| Article number | Article name | GTIN (EAN) | Packaging unit |
|----------------|------------------|---------------|----------------|
| <u>28582.6</u> | KDS-DEG 20-21 GR | 4044211215361 | 10 ST |



Seal, Mounting type: Plug in, Length x width: 42.8 mm, Max. cable diameter: 22 mm, IP 66, Colour: Grey

| Article number | Article name | GTIN (EAN) | Packaging unit |
|----------------|------------------|---------------|----------------|
| <u>28583.6</u> | KDS-DEG 21-22 GR | 4044211215385 | 10 ST |



Seal, Mounting type: Plug in, Length x width: 42.8 mm, Max. cable diameter: 23 mm, IP 66, Colour: Grey

| Article number | Article name | GTIN (EAN) | Packaging unit |
|----------------|------------------|---------------|----------------|
| <u>28584.6</u> | KDS-DEG 22-23 GR | 4044211215408 | 10 ST |



Seal, Mounting type: Plug in, Length x width: 42.8 mm, Max. cable diameter: 25 mm, IP 66, Colour: Black

| Article number | Article name | GTIN (EAN) | Packaging unit |
|----------------|------------------|---------------|----------------|
| <u>28545.4</u> | KDS-DEG 24-25 BK | 4044211215453 | 10 ST |



Seal, Mounting type: Plug in, Length x width: 42.8 mm, Max. cable diameter: 26 mm, IP 66, Colour: Black

| Article number | Article name | GTIN (EAN) | Packaging unit |
|----------------|------------------|---------------|----------------|
| <u>28546.4</u> | KDS-DEG 25-26 BK | 4044211215460 | 10 ST |



Seal, Mounting type: Plug in, Length x width: 42.8 mm, Max. cable diameter: 27 mm, IP 66, Colour: Black

| Article number | Article name | GTIN (EAN) | Packaging unit |
|----------------|------------------|---------------|----------------|
| <u>28547.4</u> | KDS-DEG 26-27 BK | 4044211215491 | 10 ST |

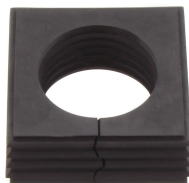


Seal, Mounting type: Plug in, Length x width: 42.8 mm, Max. cable diameter: 28 mm, IP 66, Colour: Black

| Article number | Article name | GTIN (EAN) | Packaging unit |
|----------------|------------------|---------------|----------------|
| <u>28548.4</u> | KDS-DEG 27-28 BK | 4044211215514 | 10 ST |

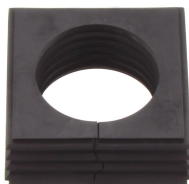
28880.4 KDSI-SR 1-4 BK

Big Seals



Seal, Mounting type: Plug in, Length x width: 42.8 mm, Max. cable diameter: 29 mm, IP 66, Colour: Black

| Article number | Article name | GTIN (EAN) | Packaging unit |
|----------------|------------------|---------------|----------------|
| <u>28549.4</u> | KDS-DEG 28-29 BK | 4044211215538 | 10 ST |



Seal, Mounting type: Plug in, Length x width: 42.8 mm, Max. cable diameter: 30 mm, IP 66, Colour: Black

| Article number | Article name | GTIN (EAN) | Packaging unit |
|----------------|------------------|---------------|----------------|
| <u>28550.4</u> | KDS-DEG 29-30 BK | 4044211215552 | 10 ST |



Seal, Mounting type: Plug in, Length x width: 42.8 mm, Max. cable diameter: 31 mm, IP 66, Colour: Black

| Article number | Article name | GTIN (EAN) | Packaging unit |
|----------------|------------------|---------------|----------------|
| <u>28551.4</u> | KDS-DEG 30-31 BK | 4044211215576 | 10 ST |



Seal, Mounting type: Plug in, Length x width: 42.8 mm, Max. cable diameter: 32 mm, IP 66, Colour: Black

| Article number | Article name | GTIN (EAN) | Packaging unit |
|----------------|------------------|---------------|----------------|
| <u>28552.4</u> | KDS-DEG 31-32 BK | 4044211215590 | 10 ST |



Seal, Mounting type: Plug in, Length x width: 42.8 mm, Max. cable diameter: 18 mm, IP 66, Colour: Grey

| Article number | Article name | GTIN (EAN) | Packaging unit |
|----------------|------------------|---------------|----------------|
| <u>28579.6</u> | KDS-DEG 17-18 GR | 4044211215309 | 10 ST |



Seal, Mounting type: Plug in, Length x width: 42.8 mm, Max. cable diameter: 19 mm, IP 66, Colour: Grey

| Article number | Article name | GTIN (EAN) | Packaging unit |
|----------------|------------------|---------------|----------------|
| <u>28580.6</u> | KDS-DEG 18-19 GR | 4044211215323 | 10 ST |



Seal dummy, Mounting type: Plug in, Length x width: 42.8 mm, IP 66, Colour: Grey

| Article number | Article name | GTIN (EAN) | Packaging unit |
|----------------|--------------|---------------|----------------|
| <u>28575.6</u> | KDS-DEG/B GR | 4044211215248 | 10 ST |

28880.4 KDSI-SR 1-4 BK

Big Seals



Seal, Mounting type: Plug in, Length x width: 42.8 mm, Max. cable diameter: 15 mm, IP 66, Colour: Grey

| Article number | Article name | GTIN (EAN) | Packaging unit |
|----------------|------------------|---------------|----------------|
| <u>28576.6</u> | KDS-DEG 14-15 GR | 4044211209971 | 10 ST |



Seal, Mounting type: Plug in, Length x width: 42.8 mm, Max. cable diameter: 16 mm, IP 66, Colour: Grey

| Article number | Article name | GTIN (EAN) | Packaging unit |
|----------------|------------------|---------------|----------------|
| <u>28577.6</u> | KDS-DEG 15-16 GR | 4044211215262 | 10 ST |



Seal, Mounting type: Plug in, Length x width: 42.8 mm, Max. cable diameter: 17 mm, IP 66, Colour: Grey

| Article number | Article name | GTIN (EAN) | Packaging unit |
|----------------|------------------|---------------|----------------|
| <u>28578.6</u> | KDS-DEG 16-17 GR | 4044211215286 | 10 ST |



Seal, Mounting type: Plug in, Length x width: 42.8 mm, Max. cable diameter: 32 mm, IP 66, Colour: Grey

| Article number | Article name | GTIN (EAN) | Packaging unit |
|----------------|------------------|---------------|----------------|
| <u>28593.6</u> | KDS-DEG 31-32 GR | 4044211215583 | 10 ST |



Seal, Mounting type: Plug in, Length x width: 42.8 mm, Max. cable diameter: 33 mm, IP 66, Colour: Grey

| Article number | Article name | GTIN (EAN) | Packaging unit |
|----------------|------------------|---------------|----------------|
| <u>28594.6</u> | KDS-DEG 32-33 GR | 4044211215606 | 10 ST |



Seal, Mounting type: Plug in, Length x width: 42.8 mm, Max. cable diameter: 34 mm, IP 66, Colour: Black

| Article number | Article name | GTIN (EAN) | Packaging unit |
|----------------|------------------|---------------|----------------|
| <u>28730.4</u> | KDS-DEG 33-34 BK | 4044211220969 | 10 ST |



Seal, Mounting type: Plug in, Length x width: 42.8 mm, Max. cable diameter: 34 mm, IP 66, Colour: Grey

| Article number | Article name | GTIN (EAN) | Packaging unit |
|----------------|------------------|---------------|----------------|
| <u>28731.6</u> | KDS-DEG 33-34 GR | 4044211220976 | 10 ST |

28880.4 KDSI-SR 1-4 BK

Big Seals



Seal, Mounting type: Plug in, Length x width: 42.8 mm, Max. cable diameter: 35 mm, IP 66, Colour: Black

| Article number | Article name | GTIN (EAN) | Packaging unit |
|-------------------------|------------------|---------------|----------------|
| 28732.4 | KDS-DEG 34-35 BK | 4044211220983 | 10 ST |



Seal, Mounting type: Plug in, Length x width: 42.8 mm, Max. cable diameter: 35 mm, IP 66, Colour: Grey

| Article number | Article name | GTIN (EAN) | Packaging unit |
|-------------------------|------------------|---------------|----------------|
| 28733.6 | KDS-DEG 34-35 GR | 4044211220990 | 10 ST |



Seal, Mounting type: Plug in, Length x width: 42.8 mm, Max. cable diameter: 23 mm, IP 66, Colour: Black

| Article number | Article name | GTIN (EAN) | Packaging unit |
|-------------------------|------------------|---------------|----------------|
| 28543.4 | KDS-DEG 22-23 BK | 4044211215415 | 10 ST |



Seal, Mounting type: Plug in, Length x width: 42.8 mm, Max. cable diameter: 24 mm, IP 66, Colour: Black

| Article number | Article name | GTIN (EAN) | Packaging unit |
|-------------------------|-------------------|---------------|----------------|
| 28554.4 | KDS-DEG/K 7-24 BK | 4044211216108 | 10 ST |



Seal, Mounting type: Plug in, Length x width: 42.8 mm, Max. cable diameter: 24 mm, IP 66, Colour: Grey

| Article number | Article name | GTIN (EAN) | Packaging unit |
|-------------------------|------------------|---------------|----------------|
| 28585.6 | KDS-DEG 23-24 GR | 4044211215422 | 10 ST |



Seal, Mounting type: Plug in, Length x width: 42.8 mm, Max. cable diameter: 25 mm, IP 66, Colour: Grey

| Article number | Article name | GTIN (EAN) | Packaging unit |
|-------------------------|------------------|---------------|----------------|
| 28586.6 | KDS-DEG 24-25 GR | 4044211215446 | 10 ST |



Seal, Mounting type: Plug in, Length x width: 42.8 mm, Max. cable diameter: 26 mm, IP 66, Colour: Grey

| Article number | Article name | GTIN (EAN) | Packaging unit |
|-------------------------|------------------|---------------|----------------|
| 28587.6 | KDS-DEG 25-26 GR | 4044211215477 | 10 ST |

28880.4 KDSI-SR 1-4 BK

Big Seals



Seal, Mounting type: Plug in, Length x width: 42.8 mm, Max. cable diameter: 27 mm, IP 66, Colour: Grey

| Article number | Article name | GTIN (EAN) | Packaging unit |
|----------------|------------------|---------------|----------------|
| <u>28588.6</u> | KDS-DEG 26-27 GR | 4044211215484 | 10 ST |



Seal, Mounting type: Plug in, Length x width: 42.8 mm, Max. cable diameter: 28 mm, IP 66, Colour: Grey

| Article number | Article name | GTIN (EAN) | Packaging unit |
|----------------|------------------|---------------|----------------|
| <u>28589.6</u> | KDS-DEG 27-28 GR | 4044211215507 | 10 ST |



Seal, Mounting type: Plug in, Length x width: 42.8 mm, Max. cable diameter: 29 mm, IP 66, Colour: Grey

| Article number | Article name | GTIN (EAN) | Packaging unit |
|----------------|------------------|---------------|----------------|
| <u>28590.6</u> | KDS-DEG 28-29 GR | 4044211215521 | 10 ST |



Seal, Mounting type: Plug in, Length x width: 42.8 mm, Max. cable diameter: 30 mm, IP 66, Colour: Grey

| Article number | Article name | GTIN (EAN) | Packaging unit |
|----------------|------------------|---------------|----------------|
| <u>28591.6</u> | KDS-DEG 29-30 GR | 4044211215545 | 10 ST |



Seal, Mounting type: Plug in, Length x width: 42.8 mm, Max. cable diameter: 31 mm, IP 66, Colour: Grey

| Article number | Article name | GTIN (EAN) | Packaging unit |
|----------------|------------------|---------------|----------------|
| <u>28592.6</u> | KDS-DEG 30-31 GR | 4044211215569 | 10 ST |



Seal, Mounting type: Plug in, Length x width: 42.8 mm, Max. cable diameter: 19 mm, IP 66, Colour: Black

| Article number | Article name | GTIN (EAN) | Packaging unit |
|----------------|------------------|---------------|----------------|
| <u>28539.4</u> | KDS-DEG 18-19 BK | 4044211215330 | 10 ST |



Seal, Mounting type: Plug in, Length x width: 42.8 mm, Max. cable diameter: 21 mm, IP 66, Colour: Black

| Article number | Article name | GTIN (EAN) | Packaging unit |
|----------------|------------------|---------------|----------------|
| <u>28541.4</u> | KDS-DEG 20-21 BK | 4044211215378 | 10 ST |

28880.4 KDSI-SR 1-4 BK

Big Seals



Seal, Mounting type: Plug in, Length x width: 42.8 mm, Max. cable diameter: 22 mm, IP 66, Colour: Black

| Article number | Article name | GTIN (EAN) | Packaging unit |
|----------------|------------------|---------------|----------------|
| <u>28542.4</u> | KDS-DEG 21-22 BK | 4044211215392 | 10 ST |
