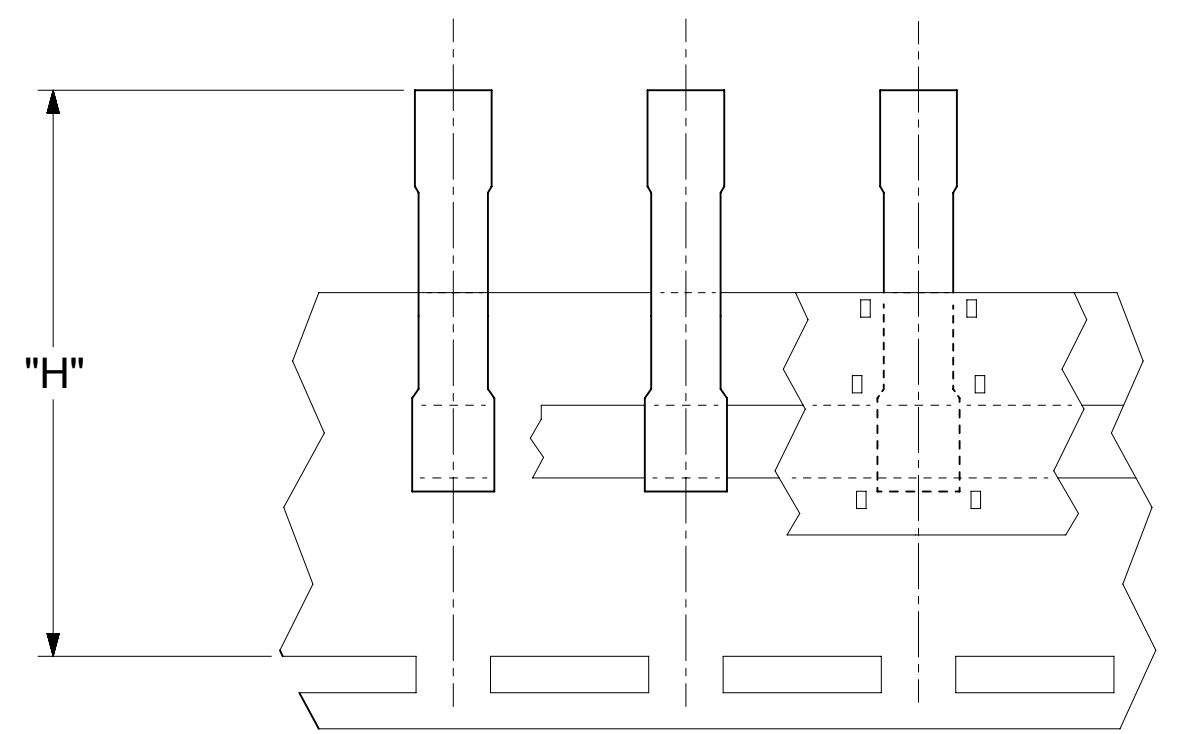
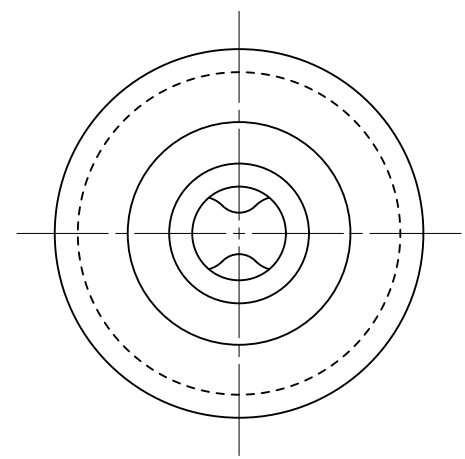
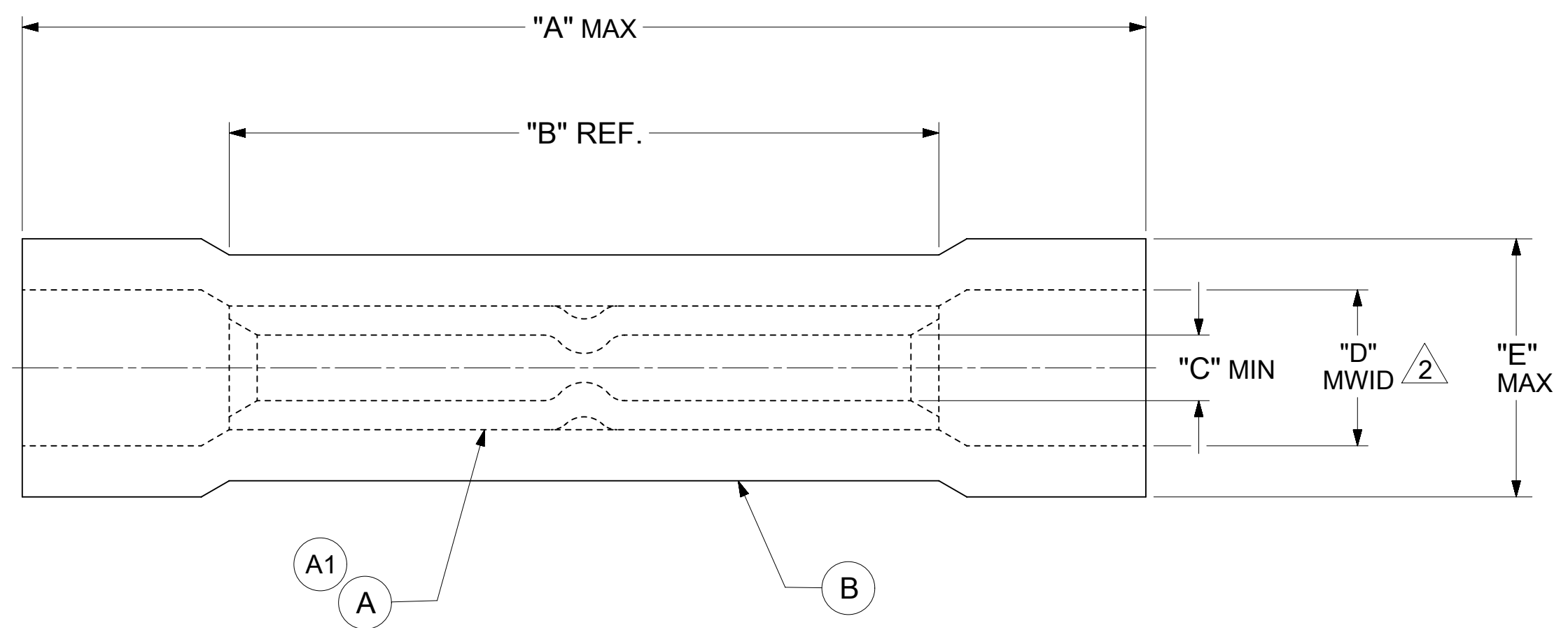


| LOOSE PIECE     |                    | TAPE MOUNTED    |                    | DIMENSIONS                  |              |                           |                           |             |               | INSULATION COLOR | WIRE RANGE AWG |
|-----------------|--------------------|-----------------|--------------------|-----------------------------|--------------|---------------------------|---------------------------|-------------|---------------|------------------|----------------|
| MATERIAL NUMBER | ENGINEERING NUMBER | MATERIAL NUMBER | ENGINEERING NUMBER | "A" MAX.                    | "B" REF.     | "C" MIN.                  | "D" $\triangle 2$ MWID    | "E" MAX.    | "H" REF       |                  |                |
| 191540011       | AS-V-345X          | 191540012       | AS-V-345XT         | 1.045 [26.54]               | .660 [16.76] | .061 [1.55]               | $\triangle 2$ .170 [4.32] | .240 [6.10] | 1.430 [36.32] | RED              | 22-18          |
| 191540023       | BS-V-331X          | 191540024       | BS-V-331XT         | 1.090 [27.69]               | .660 [16.76] | $\triangle 2$ .091 [2.31] | $\triangle 2$ .195 [4.95] | .270 [6.86] | 1.479 [37.57] | BLUE             | 16-14          |
| 191540037       | CS-V-346X          | 191540038       | CS-V-346XT         | $\triangle 2$ 1.290 [32.77] | .815 [20.70] | $\triangle 2$ .140 [3.56] | $\triangle 2$ .280 [7.11] | .360 [9.14] | 1.610 [40.89] | YELLOW           | 12-10          |

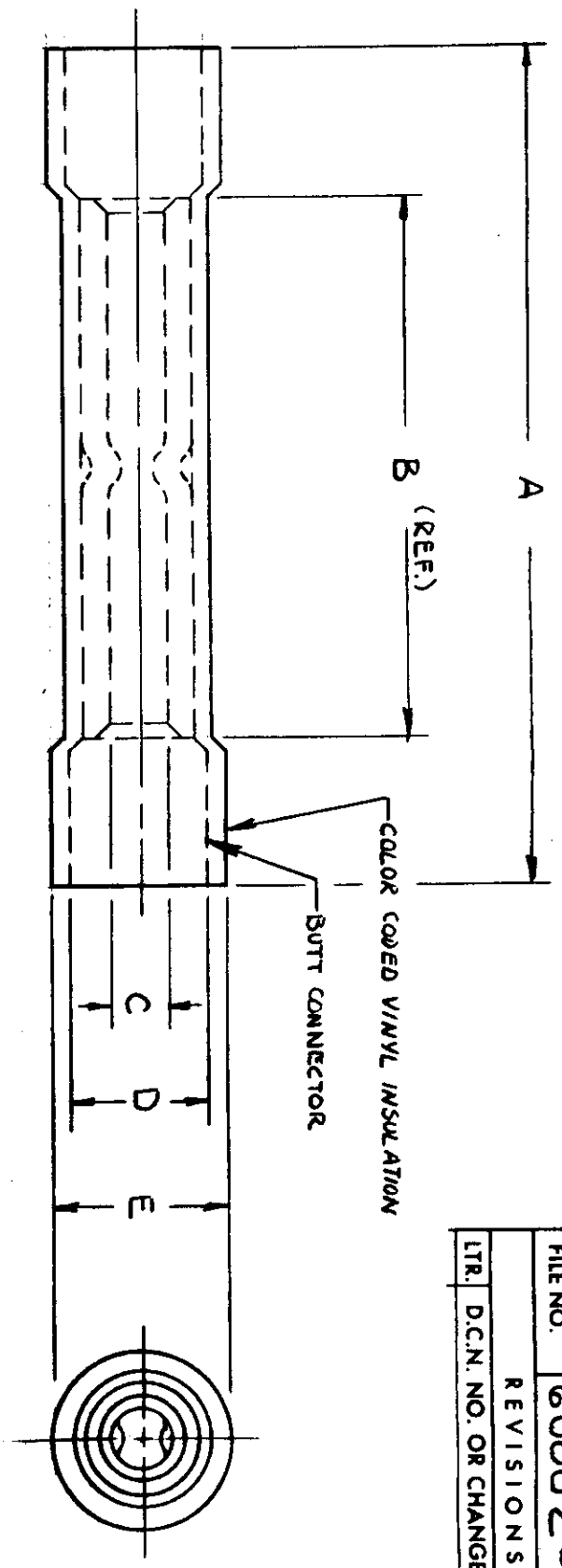


TAPE MOUNTED PARTS

- NOTES:
- MATERIAL:
    - (A). BUTT SPLICE CONNECTOR: COPPER TIN PLATED.
    - (B). INSULATION: COLOR CODED VINYL (SEE TABLE).
  - $\triangle 2$  MWID: MAXIMUM WIRE INSULATION DIAMETER.
  - ALL DIMENSIONS IN INCHES/[MM].
  - PARTS ARE ROHS COMPLIANT.
  - DIMS. SHOWN ARE FOR REFERENCE ONLY.

|   |     |  |         |                        |         |   |  |  |  |
|---|-----|--|---------|------------------------|---------|---|--|--|--|
| THIS DRAWING CONTAINS INFORMATION THAT IS PROPRIETARY TO MOLEX ELECTRONIC TECHNOLOGIES, LLC AND SHOULD NOT BE USED WITHOUT WRITTEN PERMISSION |     |  |         |                        |         |   |  |  |  |
| SYMBOLS   |     | DIMENSION UNITS                                      |         | SCALE                  |         | CURRENT REV DESC:   |  |  |  |
| $\triangle 2$   | = 0 | INCH/MM  |         | NTS                    |         | <b>molex</b><br>INSULKRIMP BUTT CONNECTOR<br>PRODUCT CUSTOMER DRAWING<br>EC NO: 626844<br>DRWN: DMYRICK 2019/11/04<br>CHK'D: GROJAS01 2019/11/07<br>APPR: GROJAS01 2019/11/07<br>INITIAL REVISION:<br>DRWN: EIIIF 1987/04/29<br>APPR: JMACNEIL 2019/08/05 |  |  |  |
| $\nabla$  | = 0 | GENERAL TOLERANCES (UNLESS SPECIFIED)                |         |                        |         |   |  |  |  |
| $\nabla$  | = 0 |  | MM      | INCH                   |         |   |  |  |  |
| $\nabla$  | = 0 | 4 PLACES   | ± ---   | ± ---                  |         |   |  |  |  |
| $\nabla$  | = 0 | 3 PLACES   | ± ---   | ± .005                 |         |   |  |  |  |
| $\nabla$  | = 0 | 2 PLACES   | ± 0.13  | ± .01                  |         |   |  |  |  |
| $\nabla$  | = 0 | 1 PLACE  | ± 0.25  | ± ---                  |         |   |  |  |  |
| $\nabla$  | = 0 | 0 PLACES   | ± ---   | ± ---                  |         |   |  |  |  |
| $\nabla$  | = 0 | ANGULAR TOL  | ± 0.5 ° |                        |         |   |  |  |  |
| $\nabla$  | = 0 | DRAFT WHERE APPLICABLE MUST REMAIN WITHIN DIMENSIONS |         | THIRD ANGLE PROJECTION | DRAWING | SERIES  | DOCUMENT NUMBER: 191540011<br>DOC TYPE: PSD<br>DOC PART: 000<br>REVISION: A1<br>MATERIAL NUMBER: SEE TABLE<br>CUSTOMER: GENERAL MARKET<br>SHEET NUMBER: 1 OF 1 |  |  |

|           |                      |    |      |
|-----------|----------------------|----|------|
| FILE NO.  | 60002-08 C           |    |      |
| REVISIONS |                      |    |      |
| LTR.      | D.C.N. NO. OR CHANGE | BY | DATE |



| ETC PART NUMBER | A MAX. | B REF. | C MIN. | D MWID | E MAX. | INSULATION COLOR | WIRE RANGE AWG |
|-----------------|--------|--------|--------|--------|--------|------------------|----------------|
|-----------------|--------|--------|--------|--------|--------|------------------|----------------|

|           |       |      |      |      |      |        |       |
|-----------|-------|------|------|------|------|--------|-------|
| AS-V-345X | 1.045 | .660 | .061 | .145 | .240 | RED    | 22-18 |
| BS-V-331X | 1.090 | .660 | .084 | .170 | .270 | BLUE   | 16-14 |
| CS-V-346X | 1.270 | .815 | .129 | .260 | .360 | YELLOW | 12-10 |
|           |       |      |      |      |      |        |       |
|           |       |      |      |      |      |        |       |
|           |       |      |      |      |      |        |       |
|           |       |      |      |      |      |        |       |
|           |       |      |      |      |      |        |       |
|           |       |      |      |      |      |        |       |
|           |       |      |      |      |      |        |       |
|           |       |      |      |      |      |        |       |

CONNECTOR MAT'L : COPPER  
 TIN PLATED  
 MWID : DENOTES, MAX. WIRE  
 INSULATION DIA.

DIMENSIONAL TOLERANCES  
 UNLESS OTHERWISE SPECIFIED

REFERENCE SCALE: NONE  
 DRWN. BY: E111F  
 DATE: 4-29-87

TITLE:  
 INSULKRIMP  
 BUTT CONNECTOR



DWG. NO. **A** CUSTOMER DRAWING